

THIS INSTRUMENT PREPARED BY
 DAVID P. LINDLEY
 OF
CAULFIELD and WHEELER, INC.
 SURVEYORS - ENGINEERS - PLANNERS
 7900 GLADES ROAD, SUITE 100
 BOCA RATON, FLORIDA 33434 - (561)392-1991
 FEBRUARY - 2013

PRESERVE AT JUNO BEACH

BEING A PORTION OF SECTION 33, TOWNSHIP 41 SOUTH, RANGE 43 EAST,
 TOWN OF JUNO BEACH, PALM BEACH COUNTY, FLORIDA

23

STATE OF FLORIDA
 COUNTY OF PALM BEACH
 THIS PLAT WAS FILED FOR
 RECORD AT _____ M.
 THIS _____ DAY OF _____
 A.D. 201____ AND DULY RECORDED
 IN PLAT BOOK _____ ON
 PAGES _____ AND _____

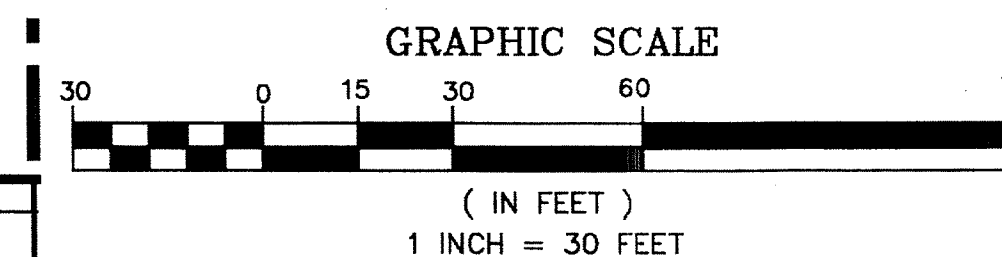
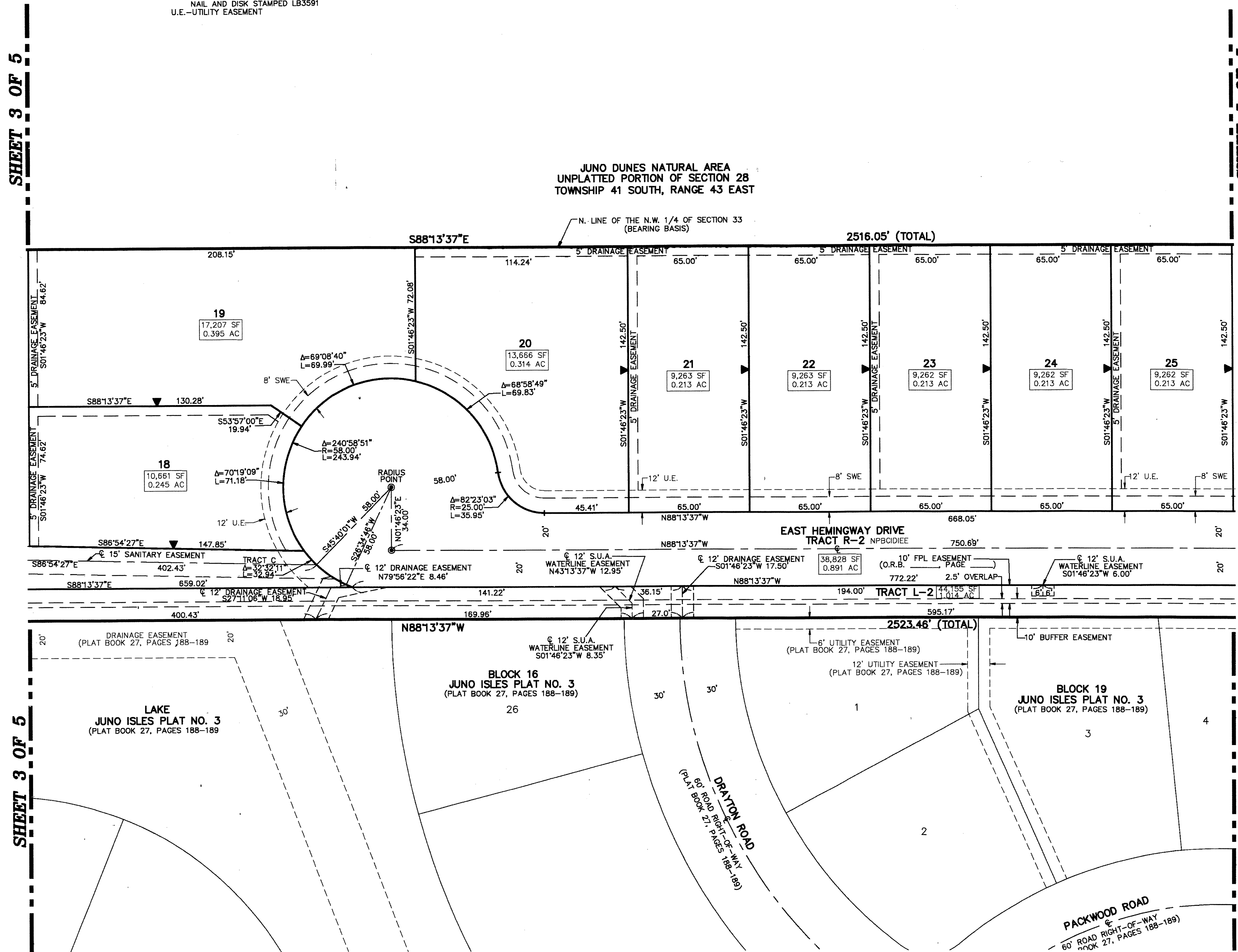
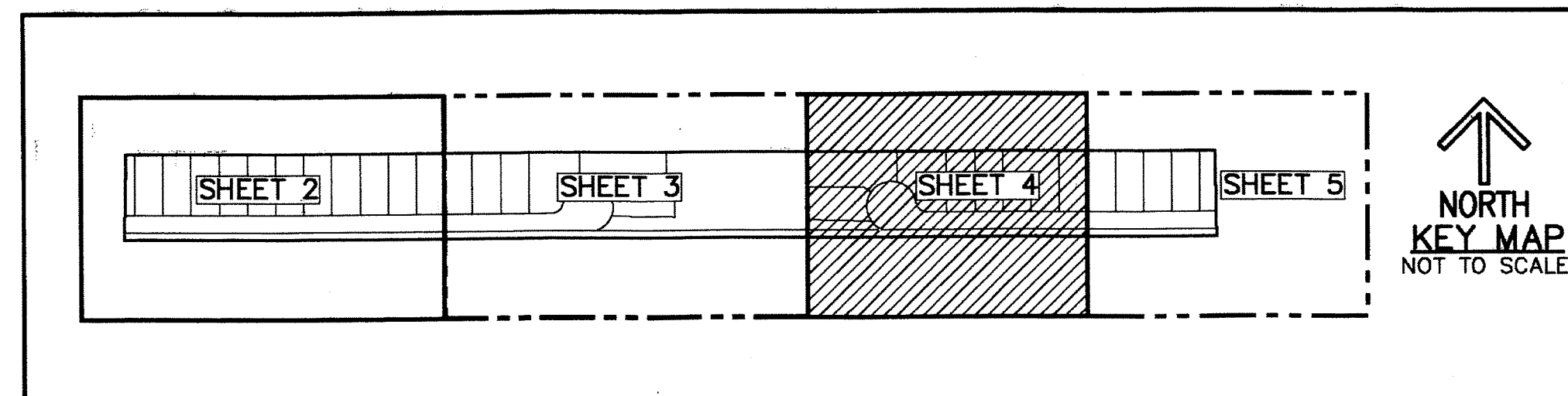
SHARON R. BOCK
 CLERK AND COMPTROLLER

BY: _____
 DEPUTY CLERK

SHEET 4 OF 5

LEGEND/ABBREVIATIONS

- ⊙ - CENTERLINE
- Δ - DELTA (CENTRAL ANGLE)
- AC - ACRES
- FPL - FLORIDA POWER & LIGHT CO.
- L - ARC LENGTH
- L.A.E. - LIMITED ACCESS EASEMENT
- LB - LICENSED BUSINESS
- NPBCIDE - NORTHERN PALM BEACH COUNTY IMPROVEMENT DISTRICT INGRESS-EGRESS EASEMENT
- O.R.B. - OFFICIAL RECORD BOOK
- R - RADIUS
- SF - SQUARE FEET
- S.S.E. - SAFE SIGHT EASEMENT
- S.U.A. - SEACOAST UTILITY AUTHORITY
- SWE - SIDEWALK EASEMENT
- ◀ - DENOTES "ZERO" SIDE OF LOT LINE
- SET PRM - INDICATES 4" X 4" X 24" PERMANENT REFERENCE MONUMENT MARKED LB 3591.
- SET PCP - INDICATES PERMANENT CONTROL POINT NAIL AND DISK STAMPED LB3591
- U.E. - UTILITY EASEMENT



SHEET 3 OF 5

SHEET 5 OF 5

SHEET 3 OF 5

SHEET 5 OF 5