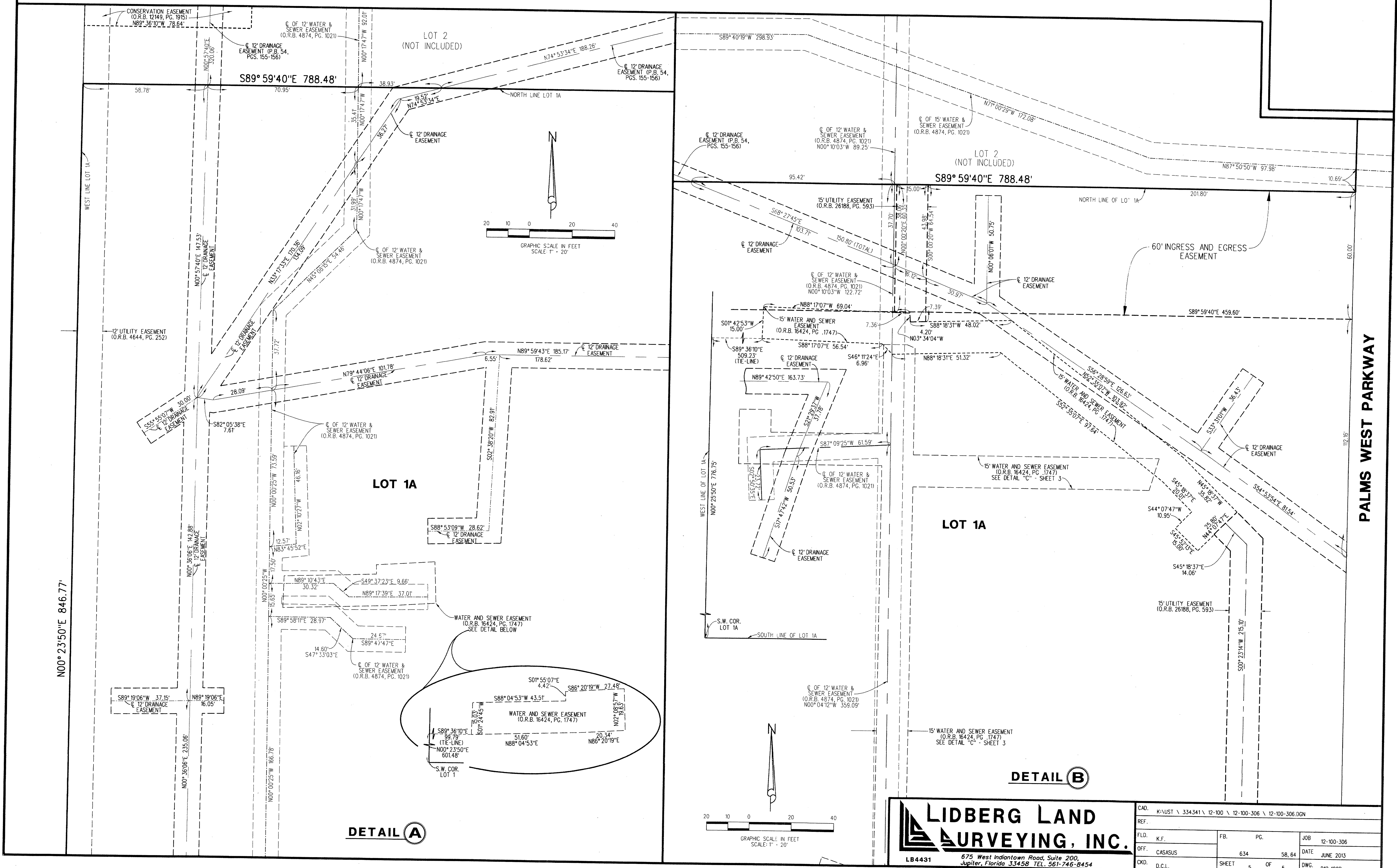


PALMS WEST MEDICAL CENTER - REPLAT NO. 1

BEING A REPLAT OF LOT 1, PARCEL A, PALMS WEST PARKWAY, AND A PORTION OF PARCEL B, AS SHOWN ON PALMS WEST MEDICAL CENTER, RECORDED IN PLAT BOOK 54, PAGES 155 AND 156, AND PARCEL B, AS SHOWN ON PALMS WEST MEDICAL OFFICE COMPLEX, RECORDED IN PLAT BOOK 69, PAGES 149 AND 150, PUBLIC RECORDS OF PALM BEACH COUNTY, FLORIDA. LYING IN SECTION 33, TOWNSHIP 43 SOUTH, RANGE 41 EAST, PALM BEACH COUNTY, FLORIDA
 JUNE 2013 SHEET 5 OF 5

45



LIDBERG LAND SURVEYING, INC.
 LB4431 675 West Indiantown Road, Suite 200, Jupiter, Florida 33458 TEL. 561-746-8454

CAD. K:\JUST \ 334341 \ 12-100 \ 12-100-306 \ 12-100-306.DGN	REF.	FLD. K.F.	FB. PG.	JOB 12-100-306
OFF. CASASUS	634	58, 64	DATE	JUNE 2013
CKD. D.C.L.	SHEET 5	OF 5	DWG.	012-100P