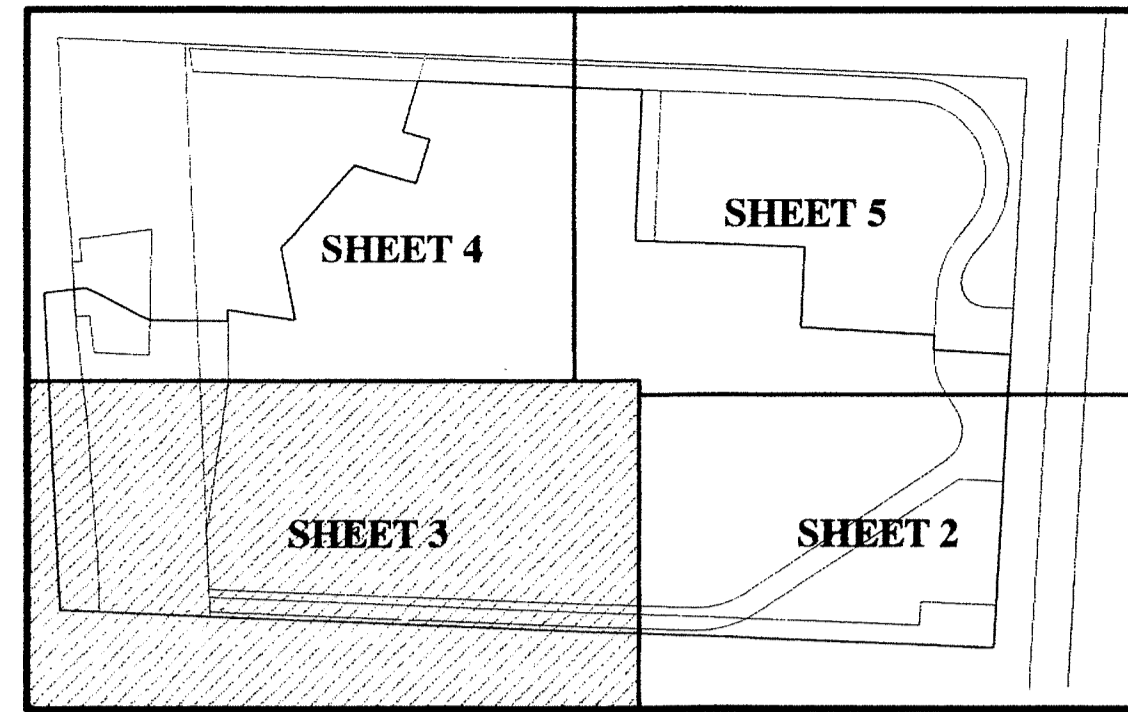
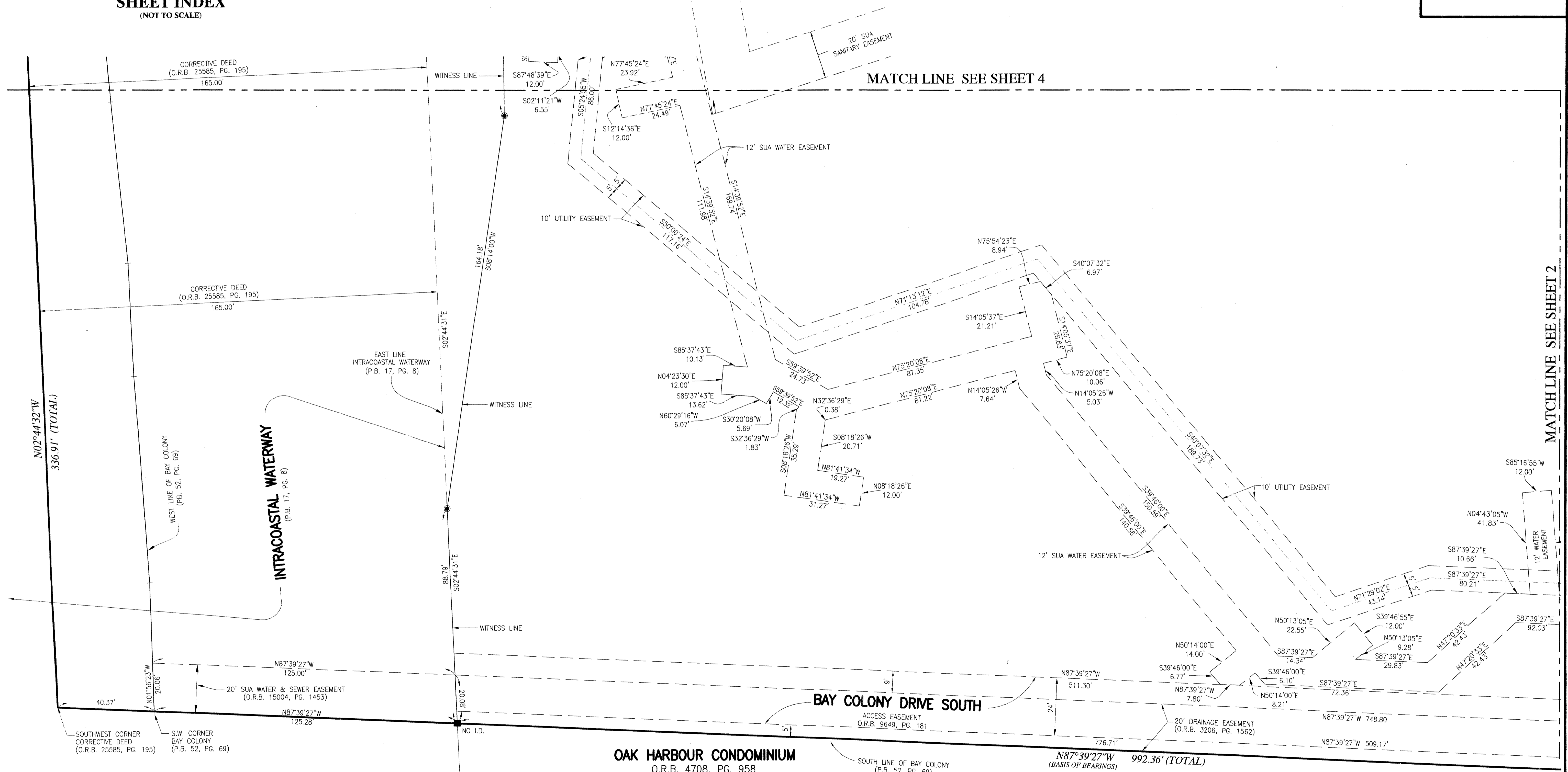
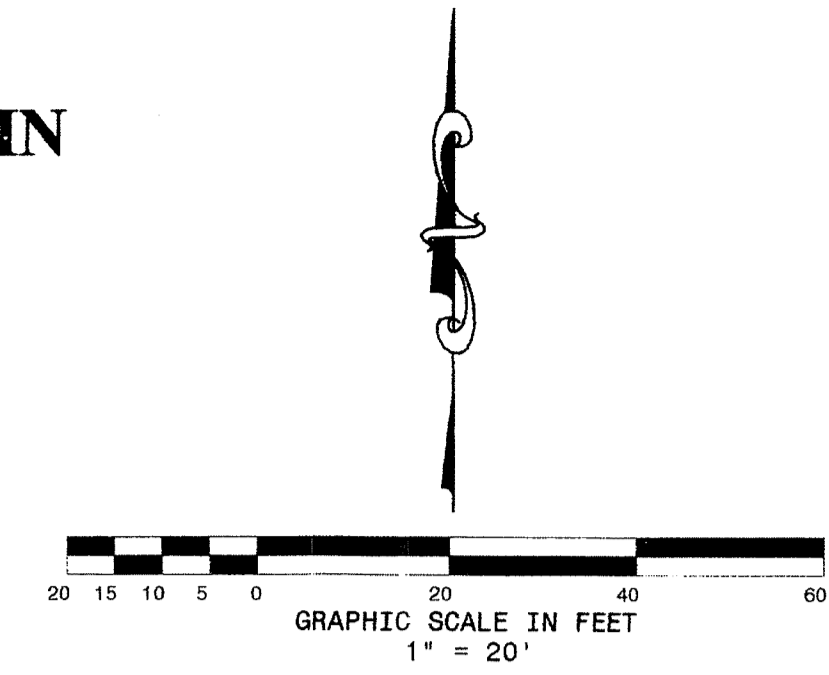


# JUNO BAY COLONY

BEING A REPLAT OF A PORTION OF BAY COLONY, AS RECORDED IN PLAT BOOK 52, PAGE 69, PUBLIC RECORDS OF PALM BEACH COUNTY, FLORIDA. TOGETHER WITH LANDS DESCRIBED IN CORRECTIVE DEED RECORDED IN OFFICIAL RECORD BOOK 25585, PAGE 195, AND LYING IN THE NORTHEAST QUARTER OF SECTION 32, TOWNSHIP 41 SOUTH, RANGE 43 EAST, TOWN OF JUNO BEACH, PALM BEACH COUNTY, FLORIDA  
SEPTEMBER 2013



SHEET INDEX  
(NOT TO SCALE)



**LEGEND**

■ FOUND 4"x4" CONCRETE MONUMENT	ID IDENTIFICATION NUMBER	P.T. POINT OF TANGENCY
● PERMANENT REFERENCE MONUMENT	SEC. SECTION	P.O.B. POINT OF BEGINNING
○ PERMANENT REFERENCE MONUMENT	TWP. TOWNSHIP	P.O.C. POINT OF COMMENCEMENT
○ NAIL WITH DISK STAMPED PRM LB# 2799	RNG. RANGE	ICWV INTRACOASTAL WATERWAY
R RADIUS	O.R.B. OFFICIAL RECORD BOOK	SUA SEACOAST UTILITY AUTHORITY
D DELTA ANGLE	P.B. PLAT BOOK	AT&T AMERICAN TELEPHONE AND TELEGRAPH
A ARC LENGTH	PG. PAGE	
CHB CHORD BEARING	℄ CENTERLINE	
CHD CHORD DISTANCE	R/W RIGHT-OF-WAY	
	P.C. POINT OF CURVATURE	
	P.R.C. POINT OF REVERSE CURVATURE	

**SHEET 3 OF 5**

**DAILEY AND ASSOCIATES, INC.**  
 Surveying and Mapping  
 112 N. U.S. Highway No. 1  
 Tequesta, FL. 33469  
 Phone: (561) 746-8424  
 BUSINESS LICENSE: LB# 2799