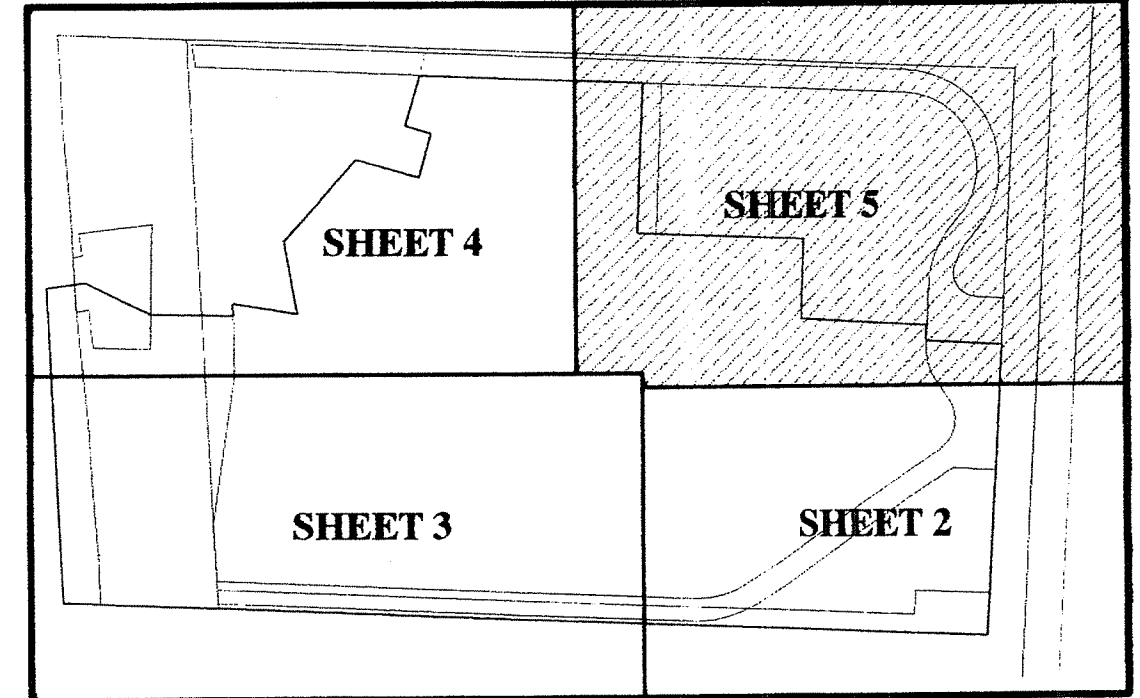
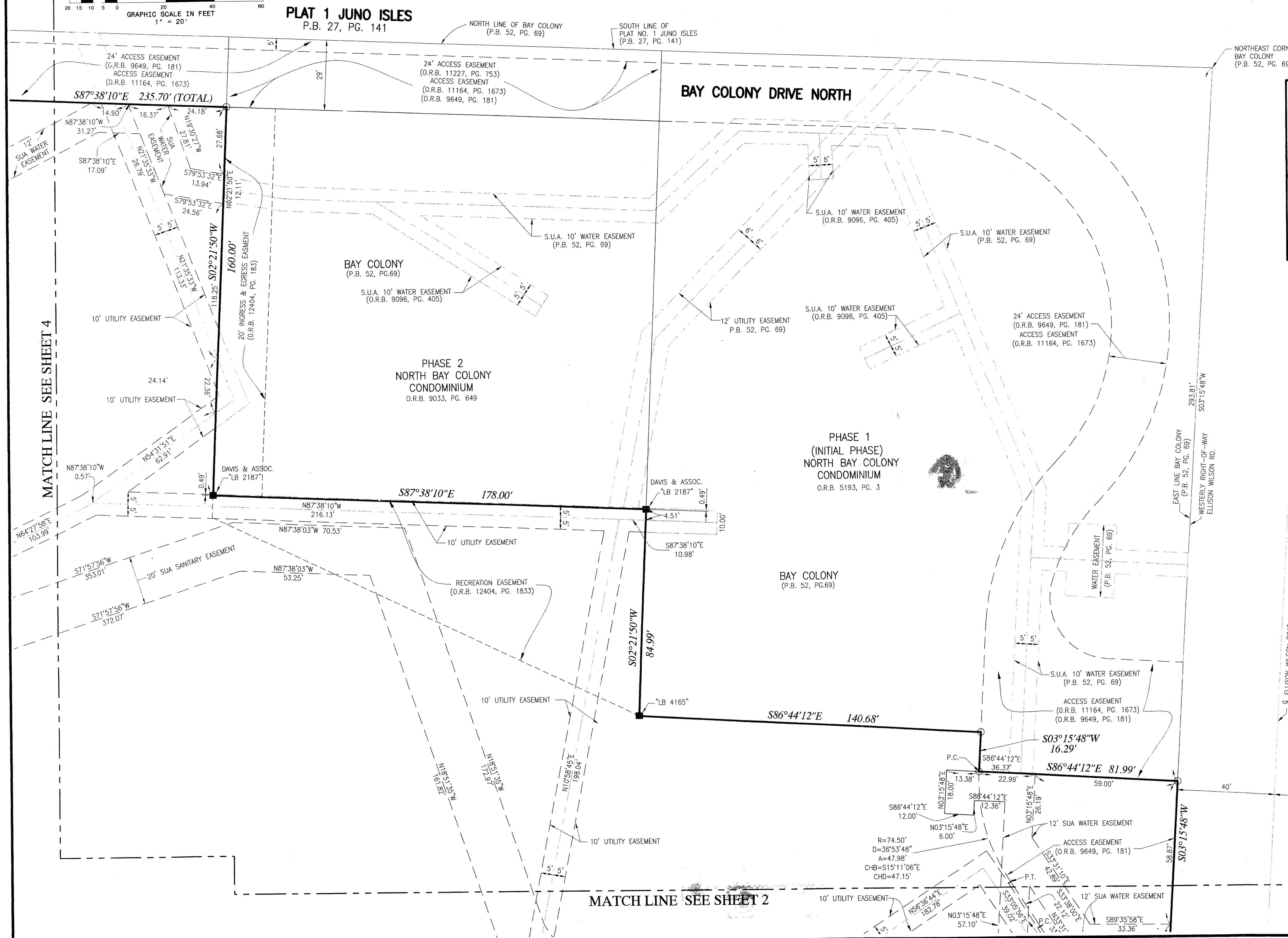
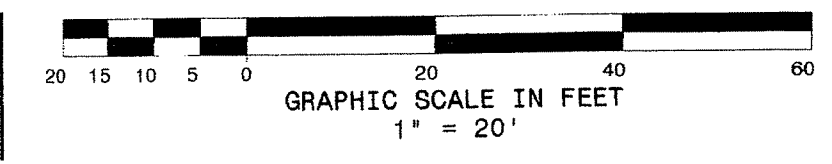


JUNO BAY COLONY

BEING A REPLAT OF A PORTION OF BAY COLONY, AS RECORDED IN PLAT BOOK 52, PAGE 69,
PUBLIC RECORDS OF PALM BEACH COUNTY, FLORIDA. TOGETHER WITH LANDS DESCRIBED IN
CORRECTIVE DEED RECORDED IN OFFICIAL RECORD BOOK 25585, PAGE 195, AND LYING IN
THE NORTHEAST QUARTER OF SECTION 32, TOWNSHIP 41 SOUTH, RANGE 43 EAST,
TOWN OF JUNO BEACH, PALM BEACH COUNTY, FLORIDA
SEPTEMBER 2013



SHEET INDEX
(NOT TO SCALE)

LEGEND

- FOUND 4'x4' CONCRETE MONUMENT
- PERMANENT REFERENCE MONUMENT
- 5/8" IRON ROD STAMPED PRM LB# 2799
- PERMANENT REFERENCE MONUMENT
- NAIL WITH DISK STAMPED PRM LB# 2799
- RADIUS
- Δ DELTA ANGLE
- A ARC LENGTH
- CHB CHORD BEARING
- CHD CHORD DISTANCE
- ID IDENTIFICATION NUMBER
- SEC. SECTION
- TWP. TOWNSHIP
- RG. RANGE
- O.R.B. OFFICIAL RECORD BOOK
- P.B. PLAT BOOK
- PG. PAGE
- CL CENTERLINE
- R/W RIGHT-OF-WAY
- P.C. POINT OF CURVATURE
- P.R.C. POINT OF REVERSE CURVATURE
- P.T. POINT OF TANGENCY
- P.O.B. POINT OF BEGINNING
- P.O.C. POINT OF COMMENCEMENT
- IOWW INTRACOASTAL WATERWAY
- SUA SEACOAST UTILITY AUTHORITY
- AT&T AMERICAN TELEPHONE AND TELEGRAPH

ELLISON WILSON ROAD

(EAST LINE OF SEC. 32, TWP. 41S, RANG. 43E.)

MATCH LINE SEE SHEET 4

MATCH LINE SEE SHEET 2

SHEET 5 OF 5
DAILEY
 AND ASSOCIATES, INC.
 Surveying and Mapping
 112 N. U.S. Highway No. 1
 Tequesta, FL. 33469
 Phone: (561) 746-8424
 BUSINESS LICENSE: LB# 2799