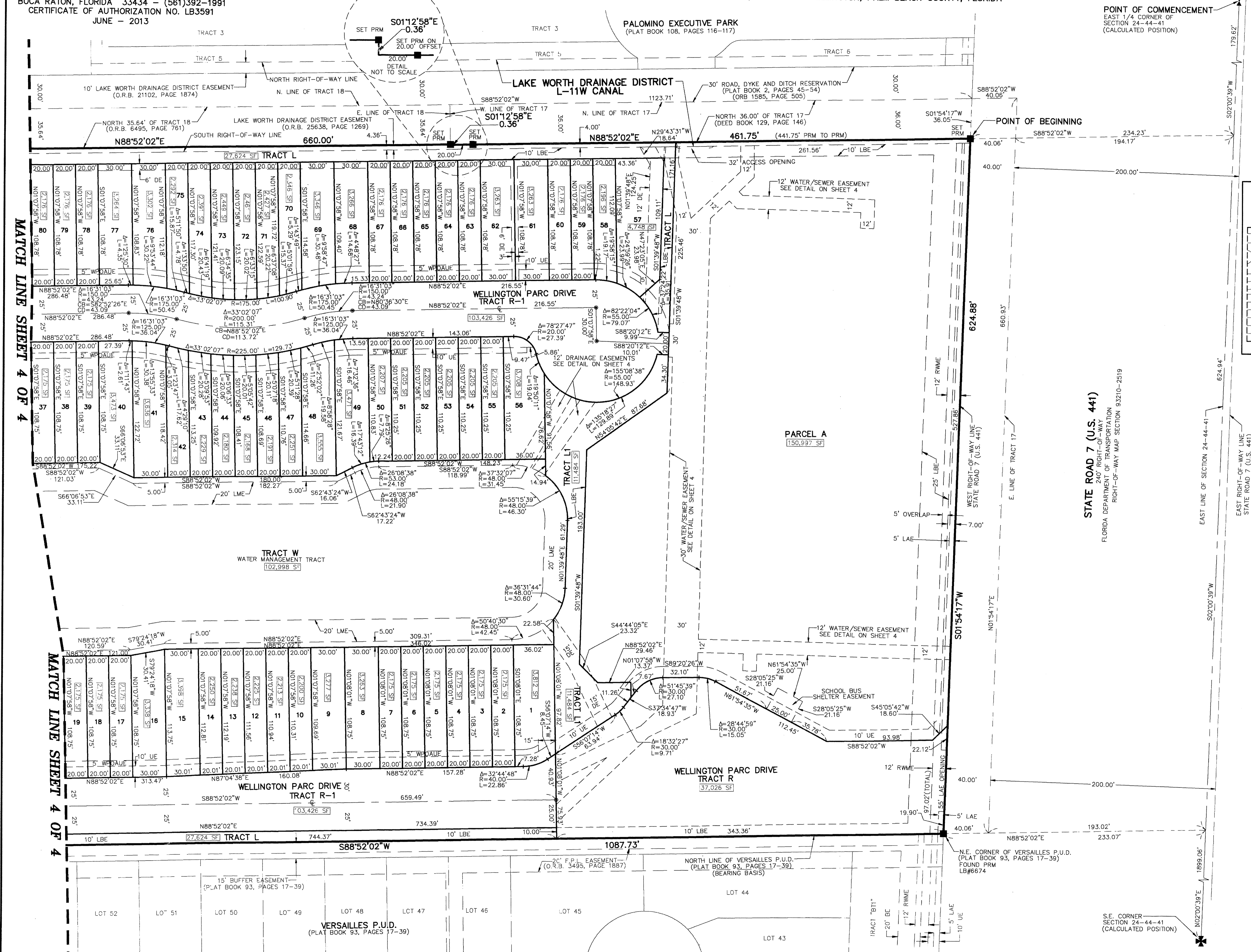


THIS INSTRUMENT PREPARED BY
DAVID P. LINDLEY
OF
CAULFIELD and WHEELER, INC.
SURVEYORS - ENGINEERS - PLANNERS
7900 GLADES ROAD, SUITE 100
BOCA RATON, FLORIDA 33434 - (561)392-1991
CERTIFICATE OF AUTHORIZATION NO. LB3591
JUNE - 2013

WELLINGTON PARC

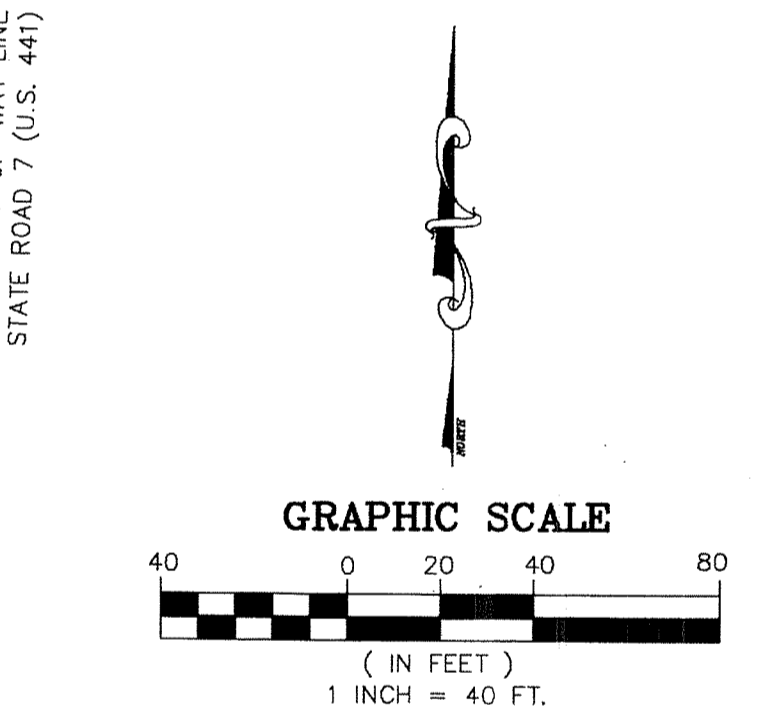
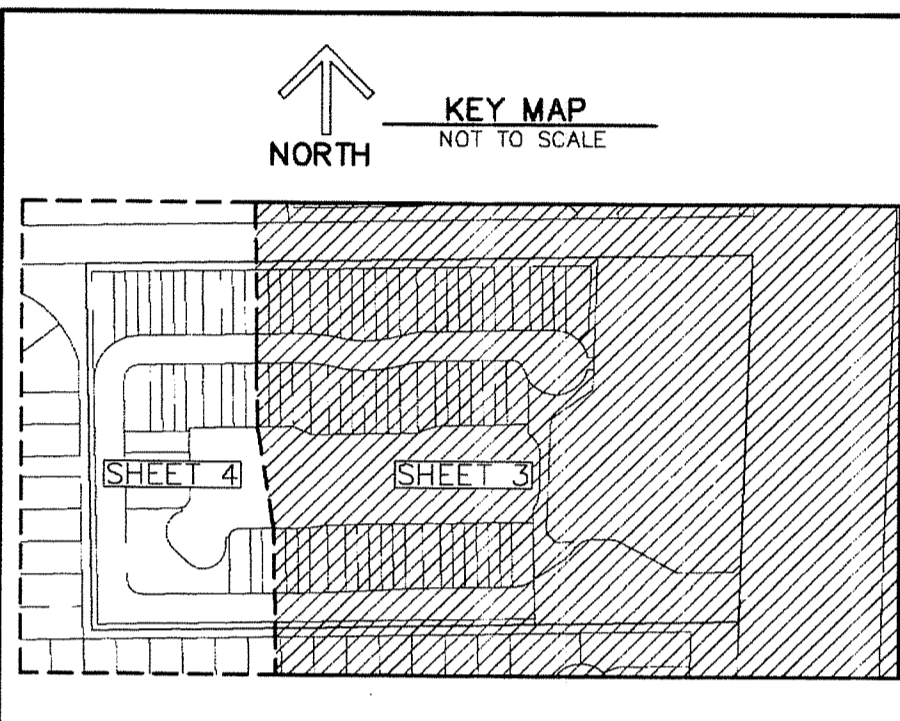
BEING A REPLAT OF A PORTION OF TRACTS 17 AND 18 OF BLOCK 26, PALM BEACH FARMS PLAT NO. 3,
AS RECORDED IN PLAT BOOK 2, PAGES 45 THROUGH 54 OF THE PUBLIC RECORDS OF PALM BEACH COUNTY, FLORIDA
LYING IN SECTION 24, TOWNSHIP 44 SOUTH, RANGE 41 EAST, VILLAGE OF WELLINGTON, PALM BEACH COUNTY, FLORIDA

69



POINT OF COMMENCEMENT
EAST 1/4 CORNER OF
SECTION 24-44-41
(CALCULATED POSITION)

POINT OF BEGINNING



- LEGEND/ABBREVIATIONS**
- PRM - INDICATES PERMANENT REFERENCE MONUMENT
4"x4"x24" CONCRETE MONUMENT WITH DISK
STAMPED PRM LB#3591
 - - INDICATES PERMANENT CONTROL POINT
 - ⊕ - CENTERLINE
 - Δ - CENTRAL ANGLE
 - R - RADIUS
 - L - ARC LENGTH
 - CB - CHORD BEARING
 - CD - CHORD DISTANCE
 - DE - DRAINAGE EASEMENT
 - LAE - LIMITED ACCESS EASEMENT
 - LB - LICENSED BUSINESS
 - LBE - LANDSCAPE BUFFER EASEMENT
 - LMAE - LAKE MAINTENANCE ACCESS EASEMENT
 - LME - LAKE MAINTENANCE EASEMENT
 - NO. - NUMBER
 - N.T.S. - NOT TO SCALE
 - O.R.B. - OFFICIAL RECORDS BOOK
 - (R) - RADIAL LINE
 - RWME - RAW WATERMAIN EASEMENT
 - UE - UTILITY EASEMENT
 - WPOAUE - WELLINGTON PARC OWNERS
ASSOCIATION UTILITY EASEMENT

STATE OF FLORIDA
COUNTY OF PALM BEACH
THIS PLAT WAS FILED FOR
RECORD AT _____ M.
THIS _____ DAY OF _____
A.D. 20____ AND DULY RECORDED
IN PLAT BOOK _____ ON
PAGES _____ AND _____
SHARON R. BOCK
CLERK AND COMPTROLLER
BY: _____
DEPUTY CLERK

SHEET 3 OF 4

MATCH LINE SHEET 4 OF 4

MATCH LINE SHEET 4 OF 4

STATE ROAD 7 (U.S. 441)
240' RIGHT-OF-WAY
FLORIDA DEPARTMENT OF TRANSPORTATION
RIGHT-OF-WAY MAP SECTION 9310-2519

N.E. CORNER OF VERSAILLES P.U.D.
(PLAT BOOK 93, PAGES 17-39)
FOUND PRM
LB#6674

S.E. CORNER
SECTION 24-44-41
(CALCULATED POSITION)