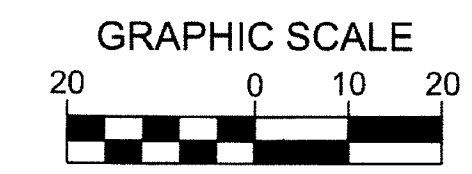


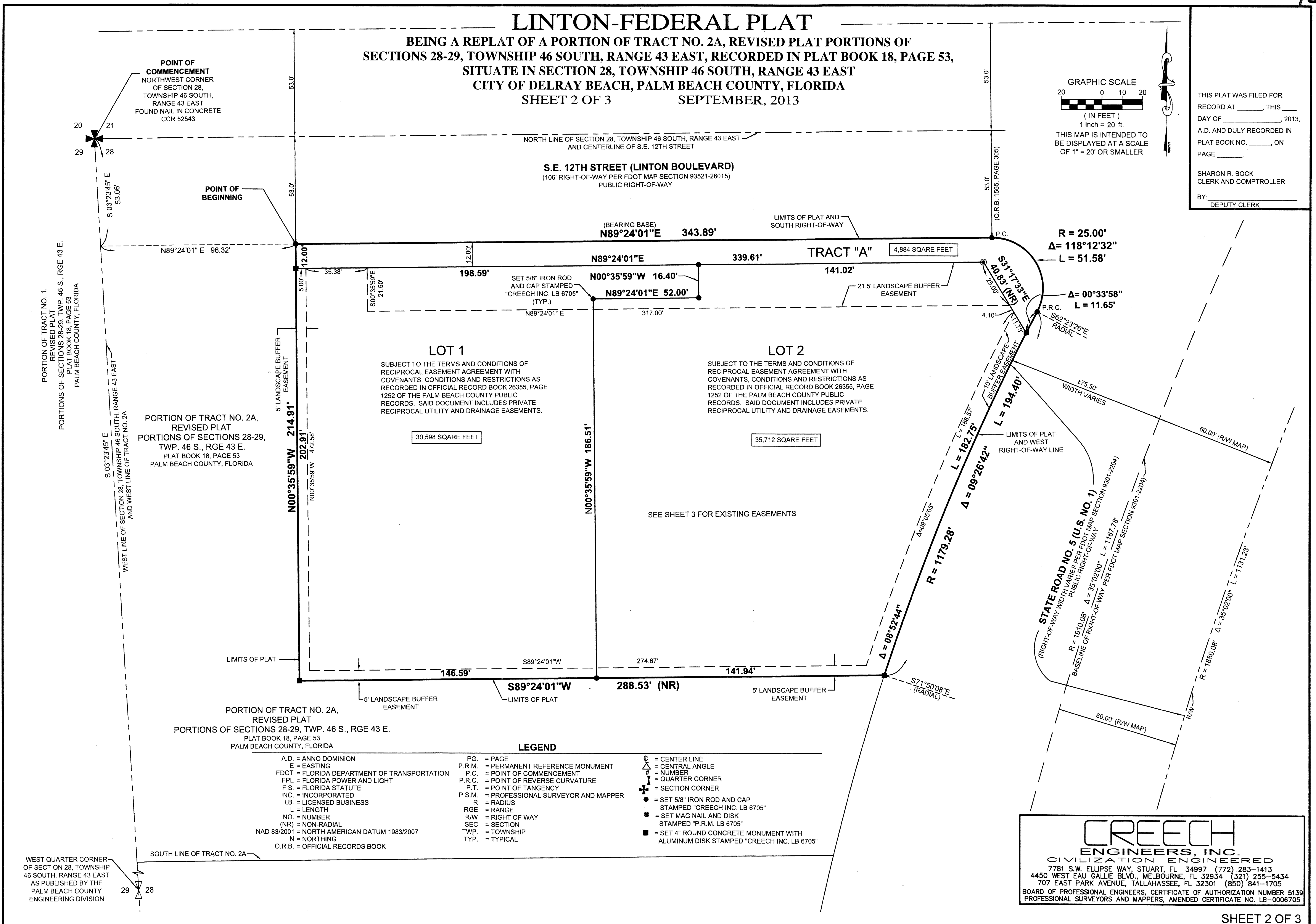
LINTON-FEDERAL PLAT

BEING A REPLAT OF A PORTION OF TRACT NO. 2A, REVISED PLAT PORTIONS OF SECTIONS 28-29, TOWNSHIP 46 SOUTH, RANGE 43 EAST, RECORDED IN PLAT BOOK 18, PAGE 53, SITUATE IN SECTION 28, TOWNSHIP 46 SOUTH, RANGE 43 EAST CITY OF DELRAY BEACH, PALM BEACH COUNTY, FLORIDA SHEET 2 OF 3 SEPTEMBER, 2013



THIS MAP IS INTENDED TO BE DISPLAYED AT A SCALE OF 1" = 20' OR SMALLER

THIS PLAT WAS FILED FOR RECORD AT _____, THIS DAY OF _____, 2013, A.D. AND DULY RECORDED IN PLAT BOOK NO. _____, ON PAGE _____. SHARON R. BOCK, CLERK AND COMPTROLLER, BY: _____, DEPUTY CLERK.



PORTION OF TRACT NO. 2A, REVISED PLAT PORTIONS OF SECTIONS 28-29, TWP. 46 S., RGE 43 E. PLAT BOOK 18, PAGE 53 PALM BEACH COUNTY, FLORIDA

LEGEND

- | | | |
|--|---|---|
| A.D. = ANNO DOMINION | PG. = PAGE | ⊙ = CENTER LINE |
| E = EASTING | P.R.M. = PERMANENT REFERENCE MONUMENT | Δ = CENTRAL ANGLE |
| FDOT = FLORIDA DEPARTMENT OF TRANSPORTATION | P.C. = POINT OF COMMENCEMENT | # = NUMBER |
| FPL = FLORIDA POWER AND LIGHT | P.R.C. = POINT OF REVERSE CURVATURE | ⊕ = QUARTER CORNER |
| F.S. = FLORIDA STATUTE | P.T. = POINT OF TANGENCY | ⊗ = SECTION CORNER |
| INC. = INCORPORATED | P.S.M. = PROFESSIONAL SURVEYOR AND MAPPER | ⊕ = SET 5/8" IRON ROD AND CAP |
| LB. = LICENSED BUSINESS | R = RADIUS | ⊙ = STAMPED "CREECH INC. LB 6705" |
| L = LENGTH | RGE = RANGE | ⊙ = SET MAG NAIL AND DISK |
| NO. = NUMBER | R/W = RIGHT OF WAY | ⊙ = STAMPED "P.R.M. LB 6705" |
| (NR) = NON-RADIAL | SEC = SECTION | ■ = SET 4" ROUND CONCRETE MONUMENT WITH |
| NAD 83/2001 = NORTH AMERICAN DATUM 1983/2007 | TWP. = TOWNSHIP | ALUMINUM DISK STAMPED "CREECH INC. LB 6705" |
| N = NORTHING | TYP. = TYPICAL | |
| O.R.B. = OFFICIAL RECORDS BOOK | | |

WEST QUARTER CORNER OF SECTION 28, TOWNSHIP 46 SOUTH, RANGE 43 EAST AS PUBLISHED BY THE PALM BEACH COUNTY ENGINEERING DIVISION

CREECH ENGINEERS, INC.
 CIVILIZATION ENGINEERED
 7781 S.W. ELLIPSE WAY, STUART, FL 34997 (772) 283-1413
 4450 WEST EAU GALLIE BLVD., MELBOURNE, FL 32934 (321) 255-5434
 707 EAST PARK AVENUE, TALLAHASSEE, FL 32301 (850) 841-1705
 BOARD OF PROFESSIONAL ENGINEERS, CERTIFICATE OF AUTHORIZATION NUMBER 5139
 PROFESSIONAL SURVEYORS AND MAPPERS, AMENDED CERTIFICATE NO. LB-0006705