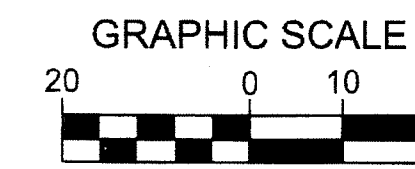


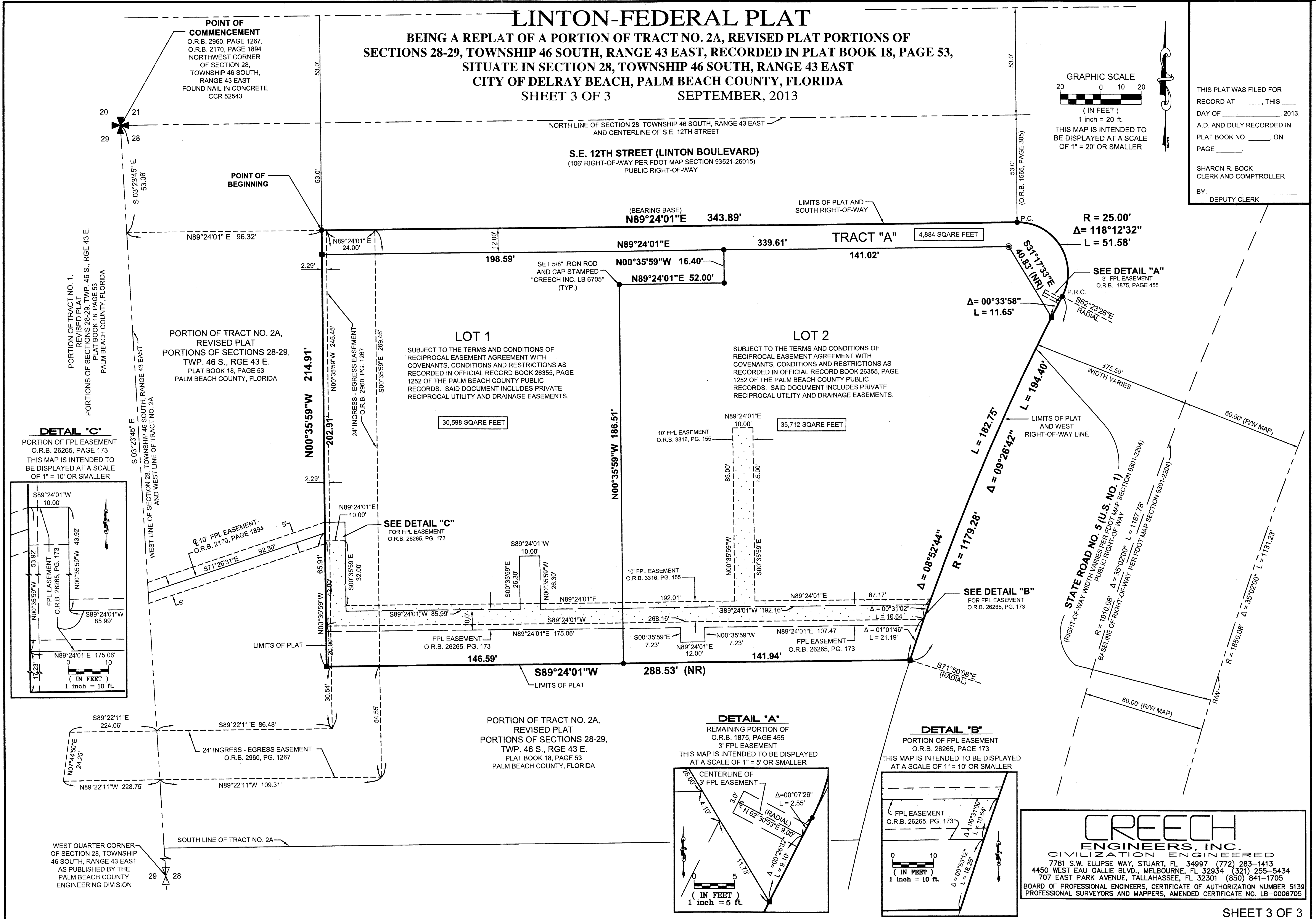
# LINTON-FEDERAL PLAT

BEING A REPLAT OF A PORTION OF TRACT NO. 2A, REVISED PLAT PORTIONS OF SECTIONS 28-29, TOWNSHIP 46 SOUTH, RANGE 43 EAST, RECORDED IN PLAT BOOK 18, PAGE 53, SITUATE IN SECTION 28, TOWNSHIP 46 SOUTH, RANGE 43 EAST CITY OF DELRAY BEACH, PALM BEACH COUNTY, FLORIDA SHEET 3 OF 3 SEPTEMBER, 2013

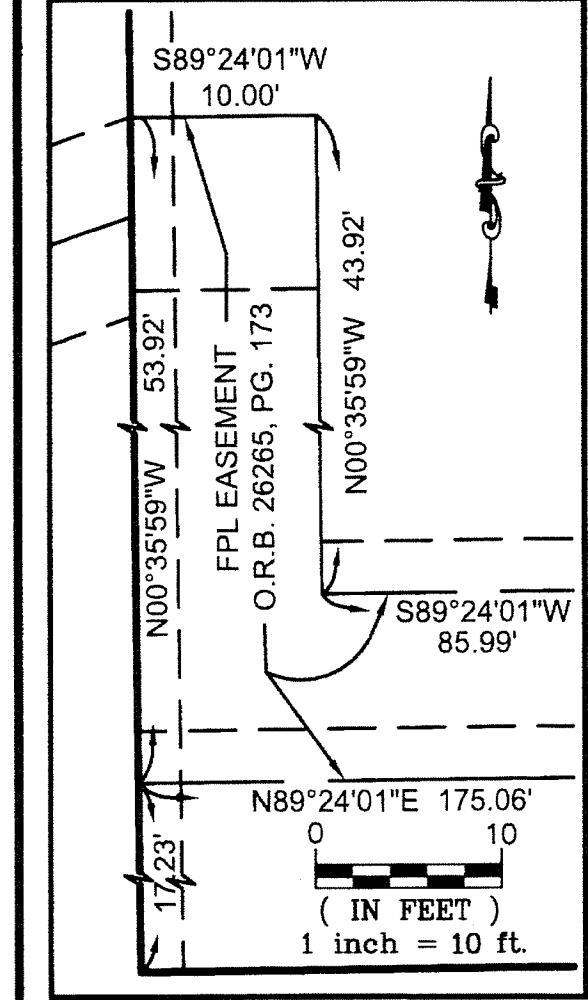


THIS MAP IS INTENDED TO BE DISPLAYED AT A SCALE OF 1" = 20' OR SMALLER

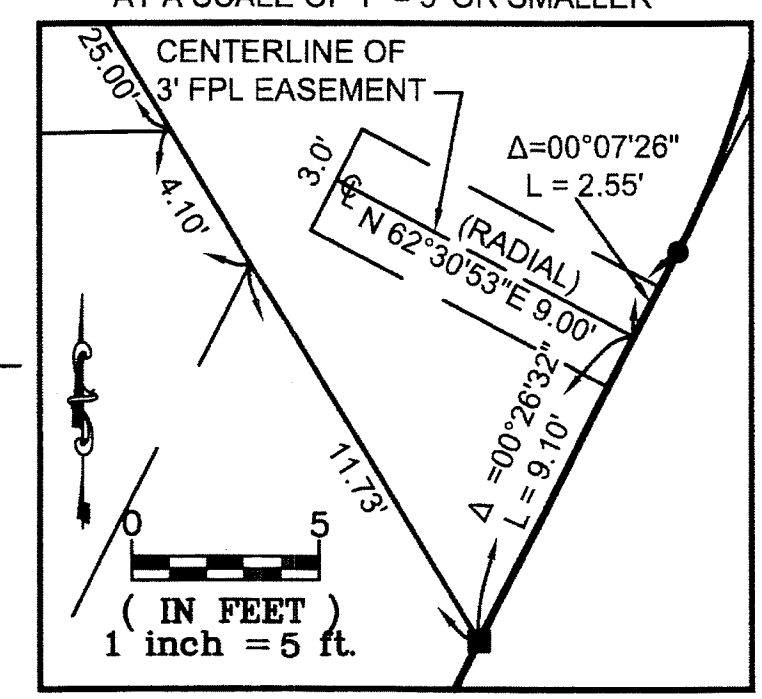
THIS PLAT WAS FILED FOR RECORD AT \_\_\_\_\_, THIS DAY OF \_\_\_\_\_, 2013, A.D. AND DULY RECORDED IN PLAT BOOK NO. \_\_\_\_\_, ON PAGE \_\_\_\_\_. SHARON R. BOCK, CLERK AND COMPTROLLER, DEPUTY CLERK



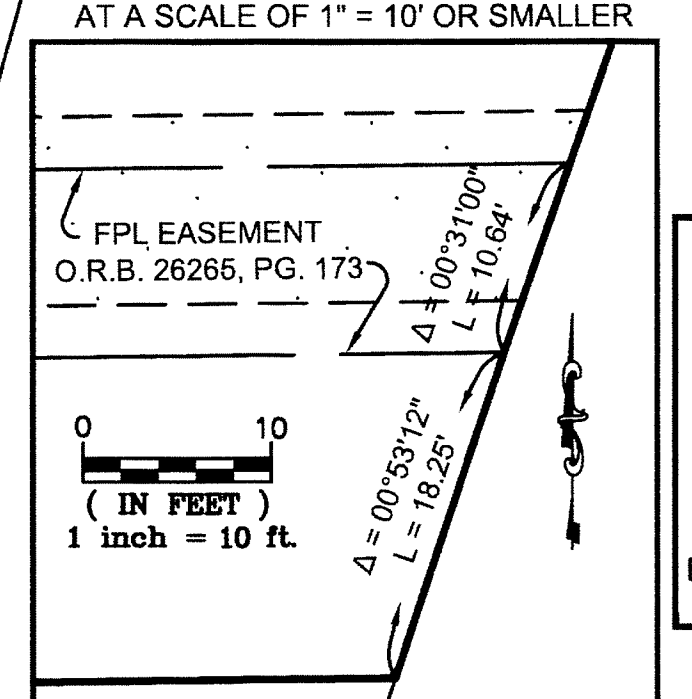
**DETAIL "C"**  
PORTION OF FPL EASEMENT  
O.R.B. 26265, PAGE 173  
THIS MAP IS INTENDED TO BE DISPLAYED AT A SCALE OF 1" = 10' OR SMALLER



**DETAIL "A"**  
REMAINING PORTION OF  
O.R.B. 1875, PAGE 455  
3' FPL EASEMENT  
THIS MAP IS INTENDED TO BE DISPLAYED AT A SCALE OF 1" = 5' OR SMALLER



**DETAIL "B"**  
PORTION OF FPL EASEMENT  
O.R.B. 26265, PAGE 173  
THIS MAP IS INTENDED TO BE DISPLAYED AT A SCALE OF 1" = 10' OR SMALLER



**CREECH ENGINEERS, INC.**  
CIVILIZATION ENGINEERED  
7781 S.W. ELLIPSE WAY, STUART, FL 34997 (772) 283-1413  
4450 WEST EAU GALLIE BLVD., MELBOURNE, FL 32934 (321) 255-5434  
707 EAST PARK AVENUE, TALLAHASSEE, FL 32301 (850) 841-1705  
BOARD OF PROFESSIONAL ENGINEERS, CERTIFICATE OF AUTHORIZATION NUMBER 5139  
PROFESSIONAL SURVEYORS AND MAPPERS, AMENDED CERTIFICATE NO. LB-0006705