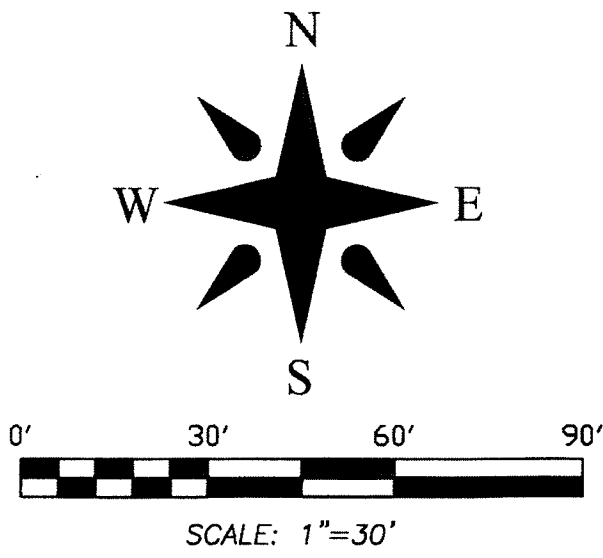


5845-000

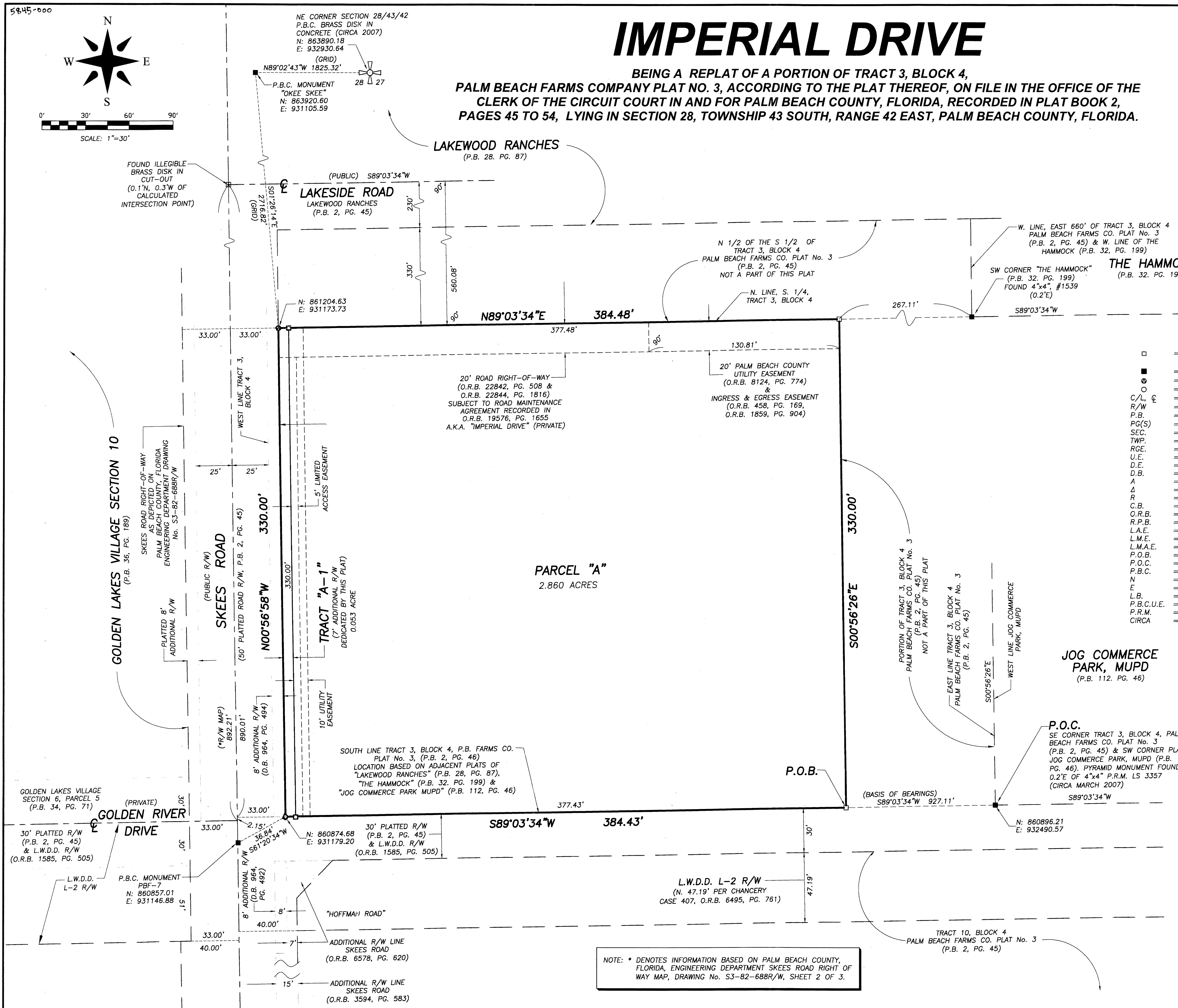


IMPERIAL DRIVE

BEING A REPLAT OF A PORTION OF TRACT 3, BLOCK 4,
PALM BEACH FARMS COMPANY PLAT NO. 3, ACCORDING TO THE PLAT THEREOF, ON FILE IN THE OFFICE OF THE
CLERK OF THE CIRCUIT COURT IN AND FOR PALM BEACH COUNTY, FLORIDA, RECORDED IN PLAT BOOK 2,
PAGES 45 TO 54, LYING IN SECTION 28, TOWNSHIP 43 SOUTH, RANGE 42 EAST, PALM BEACH COUNTY, FLORIDA.

75

SHEET 2 OF 2



- ABBREVIATIONS AND SYMBOLS**
- = SET 4"x4" CONCRETE MONUMENT WITH DISK
 - = CONCRETE MONUMENT FOUND (AS NOTED ON MAP)
 - ⊙ = SET MAG NAIL & DISK STAMPED "P.R.M. LB 4569"
 - = SET 5/8" IRON ROD & CAP STAMPED "LB 4569"
 - C/L = CENTERLINE
 - R/W = RIGHT OF WAY
 - P.B. = PLAT BOOK
 - PG(S) = PAGES
 - SEC. = SECTION
 - TWP. = TOWNSHIP
 - RGE. = RANGE
 - U.E. = UTILITY EASEMENT
 - D.E. = DRAINAGE EASEMENT
 - D.B. = DEED BOOK
 - A = ARC LENGTH
 - Δ = CENTRAL ANGLE
 - R = RADIUS
 - C.B. = CHORD BEARING
 - O.R.B. = OFFICIAL RECORDS BOOK
 - R.P.B. = ROAD PLAT BOOK
 - L.A.E. = LIMITED ACCESS EASEMENT
 - L.M.E. = LAKE MAINTENANCE EASEMENT
 - L.M.A.E. = LAKE MAINTENANCE ACCESS EASEMENT
 - P.O.B. = POINT OF BEGINNING
 - P.O.C. = POINT OF COMMENCEMENT
 - P.B.C. = PALM BEACH COUNTY
 - N = NORTHING
 - E = EASTING
 - L.B. = LANDSCAPE BUFFER
 - P.B.C.U.E. = PALM BEACH COUNTY UTILITY EASEMENT
 - P.R.M. = PERMANENT REFERENCE MONUMENT
 - CIRCA = IS A PREPOSITION MEANING "IN APPROXIMATELY" OR "AROUND"

JOG COMMERCE PARK, MUPD
(P.B. 112, PG. 46)

P.O.C.
SE CORNER TRACT 3, BLOCK 4, PALM BEACH FARMS CO. PLAT No. 3 (P.B. 2, PG. 45) & SW CORNER PLAT OF JOG COMMERCE PARK, MUPD (P.B. 112, PG. 46). PYRAMID MONUMENT FOUND 0.2'E OF 4"x4" P.R.M. LS 3357 (CIRCA MARCH 2007)

NOTE: * DENOTES INFORMATION BASED ON PALM BEACH COUNTY, FLORIDA, ENGINEERING DEPARTMENT SKEES ROAD RIGHT OF WAY MAP, DRAWING No. S3-82-688R/W, SHEET 2 OF 3.

PLAT OF:
IMPERIAL DRIVE

WALLACE SURVEYING
CORP. LICENSED BUSINESS # 4669
5503 VILLAGE BOULEVARD, WEST PALM BEACH, FLORIDA 33407 • (561) 840-4551

FIELD: B.M.	JOB No.: 12-1136.2	F.B. WP123 PG. 6
OFFICE: R.C.	DATE: 12/4/12	DWG. No.: 12-1136
CK'D:	REF.: 04-1160.DWG	SHEET 2 OF 2