

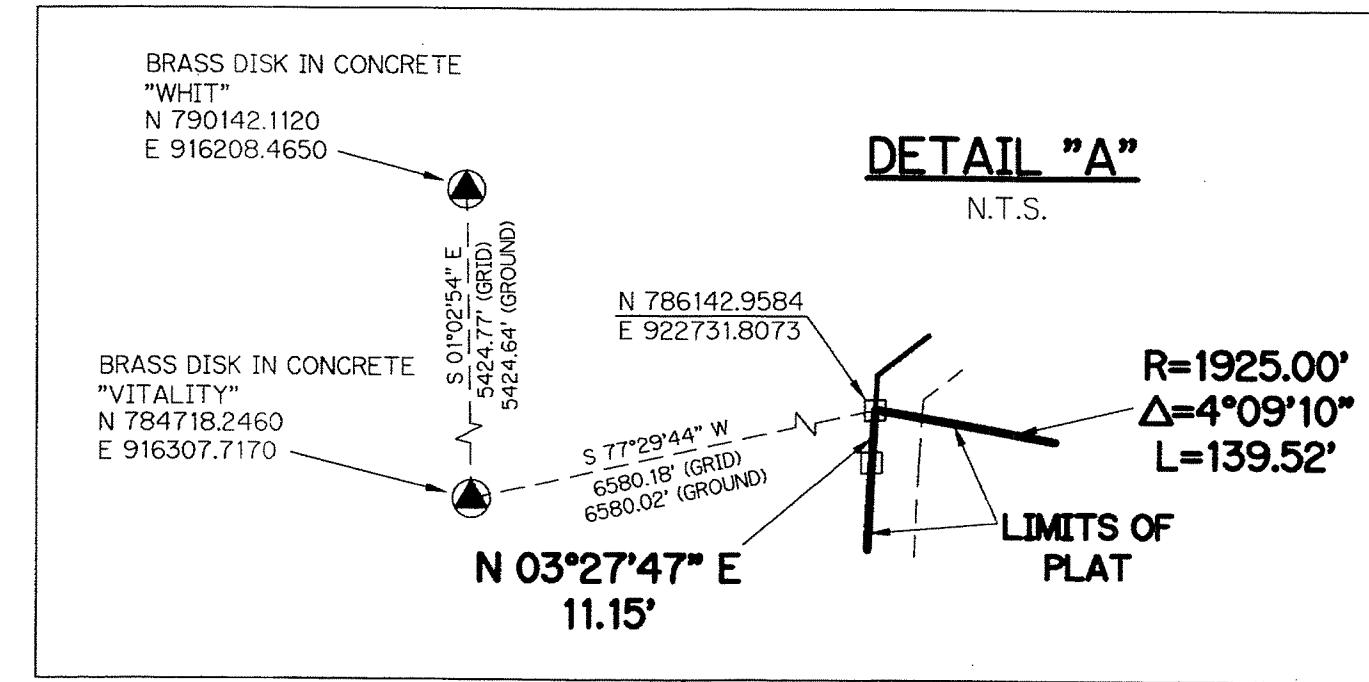
# VALENCIA COVE AGR-P.U.D. - PLAT TWO

BEING A REPLAT OF A PORTION OF TRACT "Y", CANYON LAKES PRESERVE AREA NO. 5, ACCORDING TO THE PLAT THEREOF AS RECORDED IN PLAT BOOK 101, PAGES 173 THROUGH 175, PUBLIC RECORDS, PALM BEACH COUNTY, FLORIDA, AND LYING WITHIN SECTION 5, TOWNSHIP 46 SOUTH, RANGE 42 EAST PALM BEACH COUNTY, FLORIDA.

SHEET 2 OF 3

THIS INSTRUMENT PREPARED BY  
PERRY C. WHITE, P.S.M. 4213, STATE OF FLORIDA  
SAND & HILLS SURVEYING, INC.  
8461 LAKE WORTH ROAD, SUITE 410  
LAKE WORTH, FLORIDA 33467  
LB-7741

79



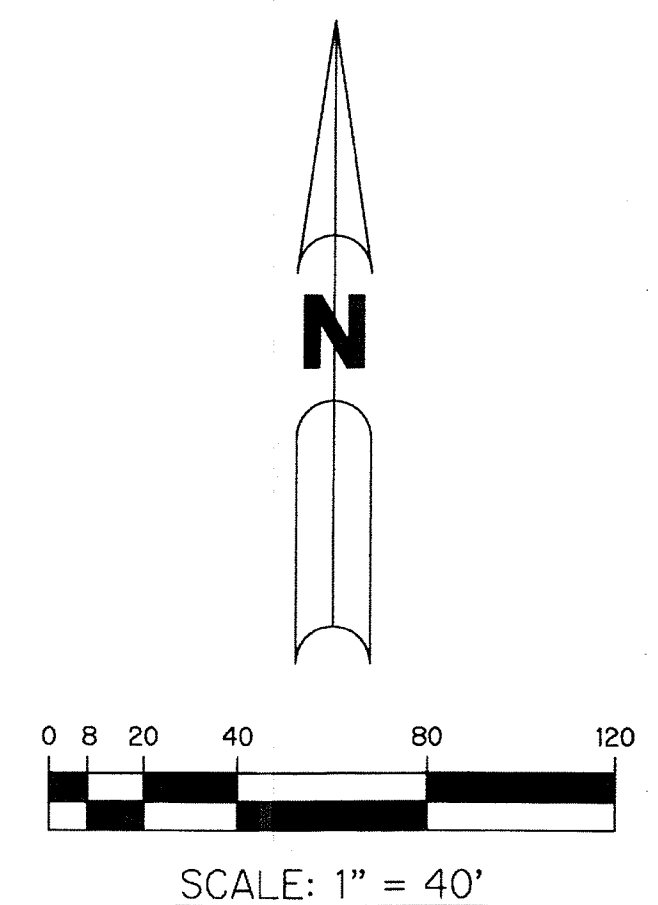
- LEGEND:**
- - SET PERMANENT REFERENCE MONUMENT
  - - FOUND PERMANENT REFERENCE MONUMENT
  - - SET PERMANENT CONTROL POINT
  - - FOUND PERMANENT CONTROL POINT
  - AGR - AGRICULTURAL
  - Δ - DELTA ANGLE
  - B.E. - BUFFER EASEMENT
  - CB - CHORD BEARING
  - CH - CHORD DISTANCE
  - CL - CENTERLINE
  - D.B. - DEED BOOK
  - D.E. - DRAINAGE EASEMENT
  - F.P.L. - FLORIDA POWER & LIGHT
  - G.E. - GRADING EASEMENT
  - L - ARC LENGTH
  - L.A.E. - LIMITED ACCESS EASEMENT
  - L.M.A.E. - LAKE MAINTENANCE ACCESS EASEMENT
  - L.M.E. - LAKE MAINTENANCE EASEMENT
  - L.W.D.D. - LAKE WORTH DRAINAGE DISTRICT
  - NR - NOT RADIAL
  - N.T.S. - NOT TO SCALE
  - O.R.B. - OFFICIAL RECORD BOOK
  - O.E. - MAINTENANCE & ROOF OVERHANG EASEMENT
  - P.B.C.U.E. - PALM BEACH COUNTY UTILITY EASEMENT
  - P.B. - PLAT BOOK
  - P.C.P. - PERMANENT CONTROL POINT
  - P.S. - PAGES
  - P.O.B. - POINT OF BEGINNING
  - P.O.C. - POINT OF COMMENCEMENT
  - P.S.M. - PROFESSIONAL SURVEYOR AND MAPPER
  - P.U.D. - PLANNED UNIT DEVELOPMENT
  - R - RADIUS
  - RAD - RADIAL
  - R/W - RIGHT-OF-WAY
  - R.D. & D. - ROAD, DYKE AND DITCH RESERVATION
  - S.T. - SURVEY TIE
  - U.E. - UTILITY EASEMENT
  - N 100000.0000  
E 100000.0000 - DENOTES STATE PLANE COORDINATES

VALENCIA COVE AGR-P.U.D.  
PLAT ONE  
(P.B. 112, PG. 46)

VALENCIA COVE AGR-P.U.D.  
PLAT ONE  
(P.B. 112, PG. 46)

BLOCK 63  
PALM BEACH FARMS CO. PLAT NO. 3  
P.B. 2, PGS. 45-54

CANYON LAKES PRESERVE AREA NO. 5  
(P.B. 101, PGS. 173-175)  
TRACT "Y"



R=2020.00'  
Δ=2°23'45"  
L=84.46'

MATCH LINE  
(SEE SHEET 3)

**NOTE:**  
COORDINATES SHOWN ARE GRID COORDINATES DATUM = NAD 83 (1990 ADJUSTMENT)  
ZONE = FLORIDA EAST ZONE  
LINEAR UNIT = U.S. SURVEY FEET  
COORDINATE SYSTEM = 1983 STATE PLANE TRANSVERSE MERCATOR PROJECTION  
ALL DISTANCES ARE GROUND  
SCALE FACTOR = 1.0000240  
PLAT BEARING = GRID BEARING  
GROUND DISTANCE X SCALE FACTOR = GRID DISTANCE

