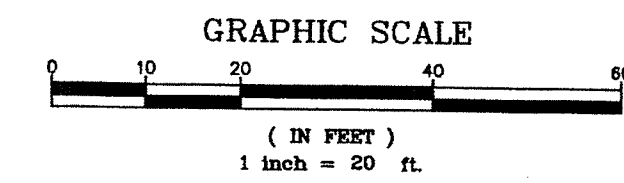
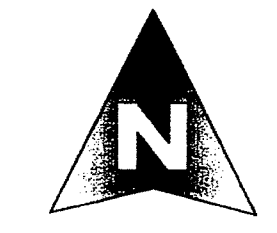


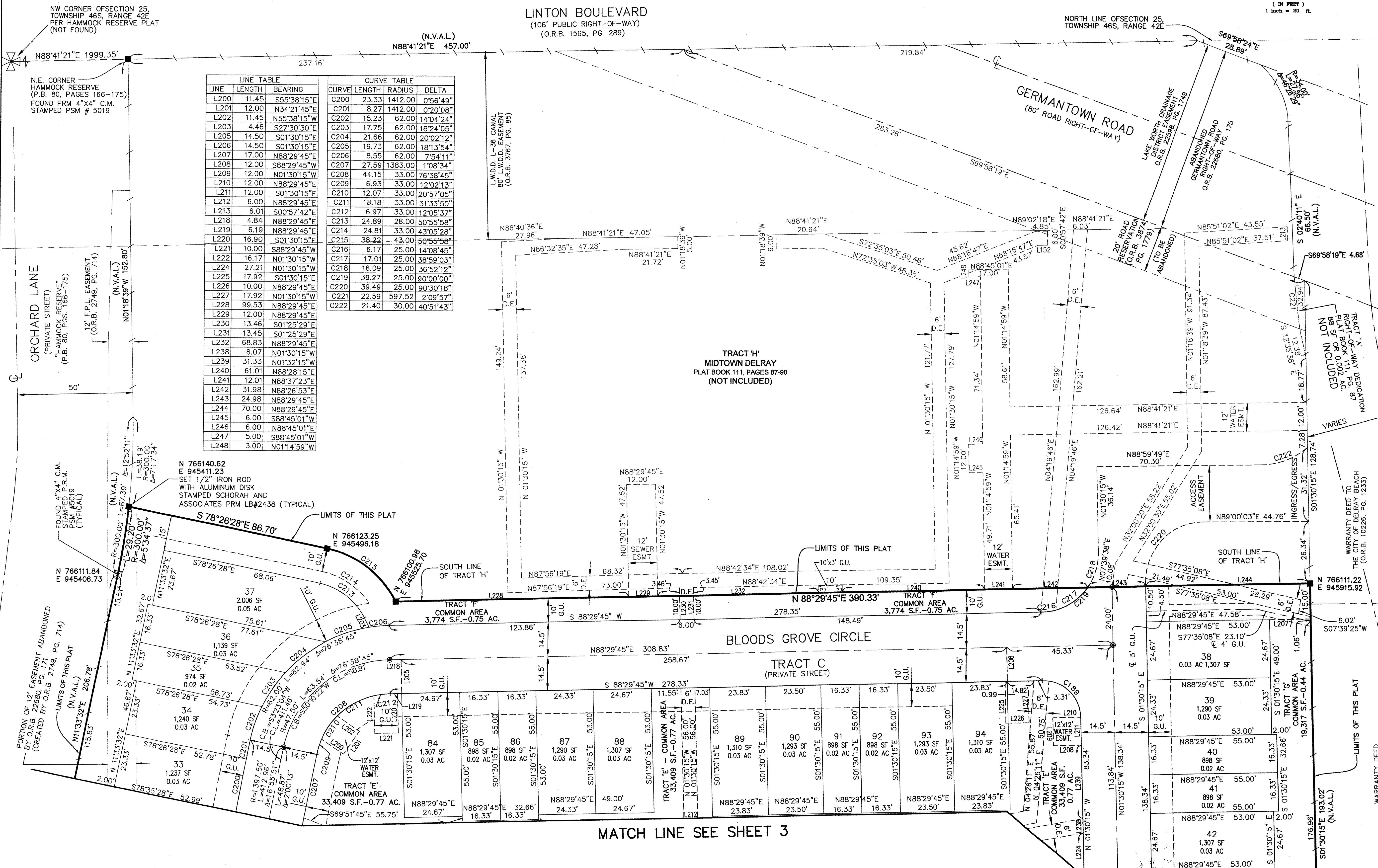
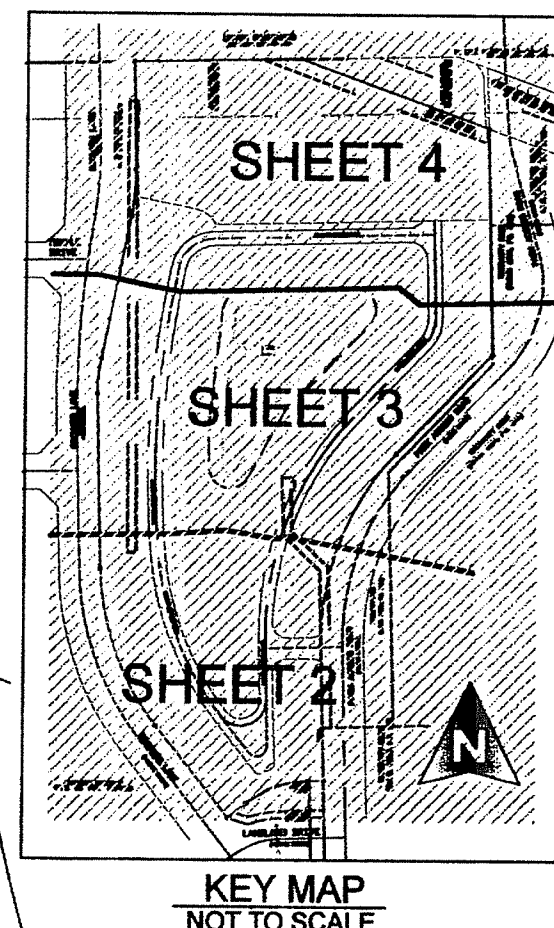
MIDTOWN DELRAY RE-PLAT 1

LYING IN SECTION 25, TOWNSHIP 46 SOUTH, RANGE 42 EAST, CITY OF DELRAY BEACH, PALM BEACH COUNTY, FLORIDA, BEING A RE-PLAT OF A PORTION OF MIDTOWN DELRAY AS RECORDED IN PLAT BOOK 111, PAGES 87 THROUGH 90, PUBLIC RECORDS OF PALM BEACH COUNTY, FLORIDA.
MAY, 2013 SHEET 4 OF 4



93

COUNTY OF PALM BEACH)
STATE OF FLORIDA) SS
THIS PLAT WAS FILED FOR RECORD AT)
M. THIS) DAY OF)
RECORDED IN PLAT BOOK NO.)
ON PAGE) THRU)
SHARON R. BOCK,
CLERK AND COMPTROLLER
BY:) D.C.



LINE TABLE			CURVE TABLE			
LINE	LENGTH	BEARING	CURVE	LENGTH	RADIUS	DELTA
L200	11.45	S55°38'15"E	C200	23.33	1412.00	0°56'49"
L201	12.00	N34°21'45"E	C201	8.27	1412.00	0°20'08"
L202	11.45	N55°38'15"W	C202	15.23	62.00	14°04'24"
L203	4.46	S27°30'30"E	C203	17.75	62.00	16°24'05"
L205	14.50	S01°30'15"E	C204	21.66	62.00	20°02'12"
L206	14.50	S01°30'15"E	C205	19.73	62.00	18°13'54"
L207	17.00	N88°29'45"E	C206	8.55	62.00	7°54'11"
L208	12.00	S88°29'45"W	C207	27.59	1383.00	1°08'34"
L209	12.00	N01°30'15"W	C208	44.15	33.00	78°38'45"
L210	12.00	N88°29'45"E	C209	6.93	33.00	12°02'13"
L211	12.00	S01°30'15"E	C210	12.07	33.00	20°57'05"
L212	6.00	N88°29'45"E	C211	18.18	33.00	31°33'50"
L213	6.01	S00°57'42"E	C212	6.97	33.00	12°05'37"
L218	4.84	N88°29'45"E	C213	24.89	28.00	50°55'58"
L219	6.19	N88°29'45"E	C214	24.81	33.00	43°05'28"
L220	16.90	S01°30'15"E	C215	38.22	-43.00	50°56'58"
L221	10.00	S88°29'45"W	C216	6.17	25.00	14°08'45"
L222	16.17	N01°30'15"W	C217	17.01	25.00	38°59'03"
L224	27.21	N01°30'15"W	C218	16.09	25.00	36°52'12"
L225	17.92	S01°30'15"E	C219	39.27	25.00	90°00'00"
L226	10.00	N88°29'45"E	C220	39.49	25.00	90°30'18"
L227	17.92	N01°30'15"W	C221	22.59	597.52	2°09'57"
L228	99.53	N88°29'45"E	C222	21.40	30.00	40°51'43"
L229	12.00	N88°29'45"E				
L230	13.46	S01°25'29"E				
L231	13.45	S01°25'29"E				
L232	68.83	N88°29'45"E				
L238	6.07	N01°30'15"W				
L239	31.33	N01°32'15"W				
L240	61.01	N88°28'15"E				
L241	12.01	N88°37'23"E				
L242	31.98	N88°26'53"E				
L243	24.98	N88°29'45"E				
L244	70.00	N88°29'45"E				
L245	6.00	S88°45'01"W				
L246	6.00	N88°45'01"E				
L247	5.00	S88°45'01"W				
L248	3.00	N01°14'59"W				

MATCH LINE SEE SHEET 3



MICHAEL B. SCHORAH & ASSOCIATES, INC.
1850 FOREST HILL BLVD., SUITE 206
WEST PALM BEACH, FLORIDA 33406
EB# 2438 TEL. (561) 968-0080 FAX. (561) 642-9726 LB# 2438