

THIS INSTRUMENT PREPARED BY
DAVID P. LINDLEY
OF
CAULFIELD and WHEELER, INC.
SURVEYORS - ENGINEERS - PLANNERS
7900 GLADES ROAD, SUITE 100
BOCA RATON, FLORIDA 33434 - (561)392-1991
JUNE - 2013

VILLAGGIO ISLES PUD REPLAT

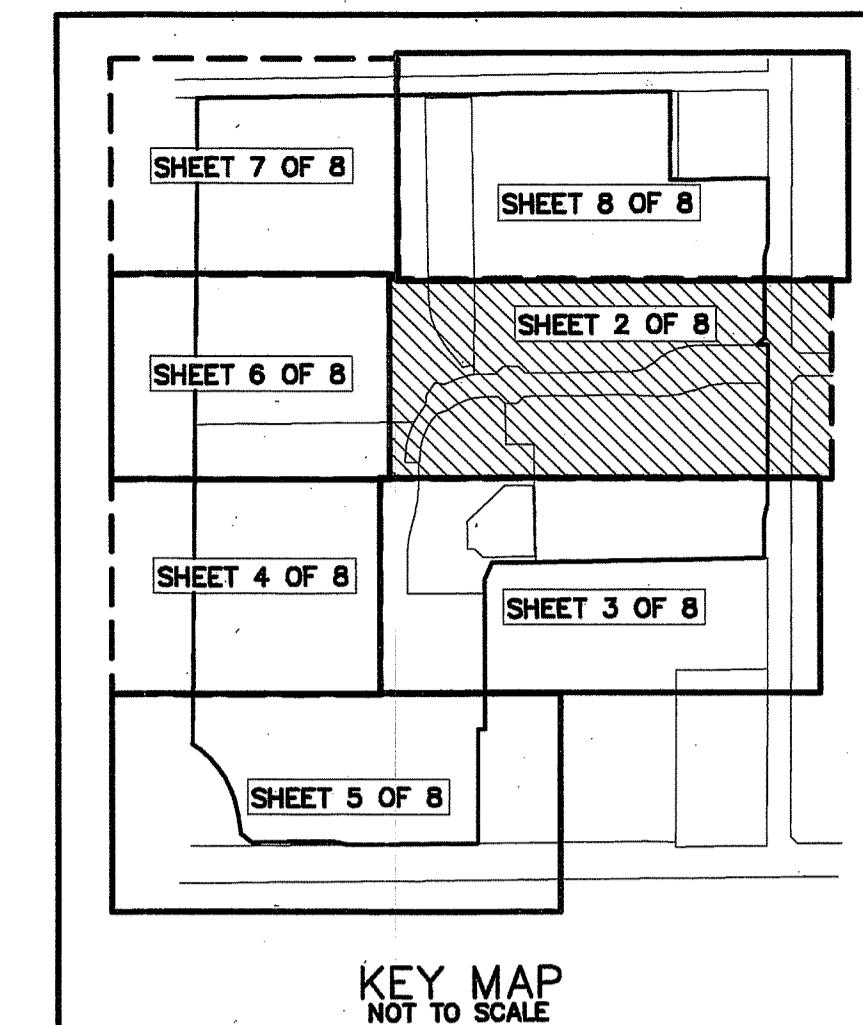
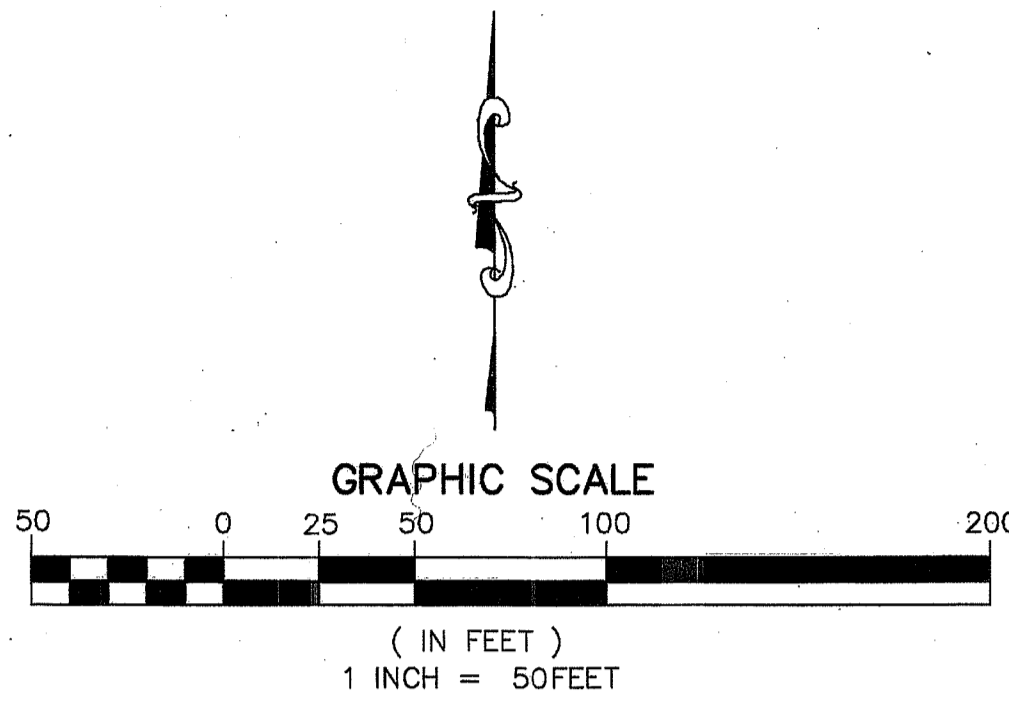
VILLAGGIO ISLES PUD, A PLANNED UNIT DEVELOPMENT
BEING A REPLAT OF PARCEL A, TRACT L, TRACT R AND TRACT W, VILLAGGIO ISLES-PHASE I
AS RECORDED PLAT BOOK 111, PAGES 123 THROUGH 131 OF THE PUBLIC RECORDS OF PALM BEACH COUNTY, FLORIDA
LYING IN SECTION 16 TOWNSHIP 46 SOUTH, RANGE 42 EAST, PALM BEACH COUNTY, FLORIDA

LEGEND/ABBREVIATIONS

- △ - CENTERLINE
- △ - DELTA (CENTRAL ANGLE)
- AC - ACRES
- CB - CHORD BEARING
- CD - CHORD DISTANCE
- DE - DRAINAGE EASEMENT
- FPL - FLORIDA POWER & LIGHT CO.
- L - ARC LENGTH
- LAE - LIMITED ACCESS EASEMENT
- LB - LICENSED BUSINESS
- LMAE - LAKE MAINTENANCE ACCESS EASEMENT
- LME - LAKE MAINTENANCE EASEMENT
- LSE - LIFT STATION EASEMENT
- L.W.D.D. - LAKE WORTH DRAINAGE DISTRICT
- O.R.B. - OFFICIAL RECORD BOOK
- PBCUE - PALM BEACH COUNTY UTILITY EASEMENT
- R - RADIUS
- (R) - INDICATES RADIAL LINE
- SF - SQUARE FEET
- UE - UTILITY EASEMENT
- PRM - DENOTES PERMANENT REFERENCE MONUMENT
- 4" x 4" x 24" CONCRETE MONUMENT STAMPED LB3591
- PCP - DENOTES PERMANENT CONTROL POINT
- NAIL AND METAL DISK STAMPED LB3591
- ▲ DENOTES PERMANENT REFERENCE MONUMENT SET NAIL AND DISC STAMPED "PRM" LB 3591

NOTES

COORDINATES, BEARINGS AND DISTANCES
 COORDINATES SHOWN ARE GRID
 DATUM = NAD 83 1990 ADJUSTMENT
 ZONE = FLORIDA EAST
 LINEAR UNIT = US SURVEY FEET
 COORDINATE SYSTEM 1983 STATE PLANE
 TRANSVERSE MERCATOR PROJECTION
 ALL DISTANCES ARE GROUND
 SCALE FACTOR = 1.0000265
 GROUND DISTANCE X SCALE FACTOR = GRID DISTANCE
 BEARINGS AS SHOWN HEREON ARE GRID DATUM,
 NAD 83 1990 ADJUSTMENT, FLORIDA EAST ZONE.

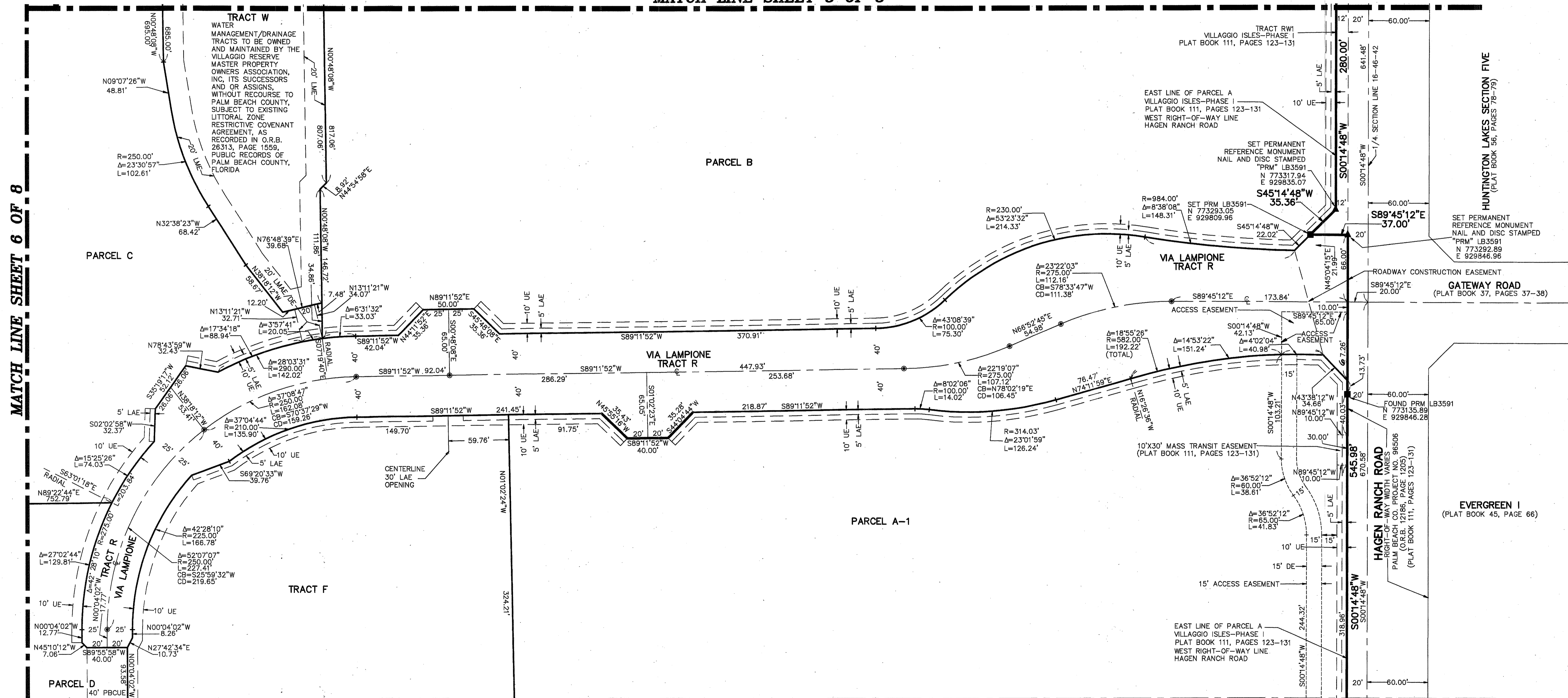


103

STATE OF FLORIDA
 COUNTY OF PALM BEACH
 THIS PLAT WAS FILED FOR
 RECORD AT _____ M.
 THIS _____ DAY OF _____
 A.D. 20____ AND DULY RECORDED
 IN PLAT BOOK _____ ON
 PAGES _____ AND _____
 SHARON R. BOCK
 CLERK AND COMPTROLLER
 BY: _____
 DEPUTY CLERK

SHEET 2 OF 8

MATCH LINE SHEET 8 OF 8



MATCH LINE SHEET 3 OF 8