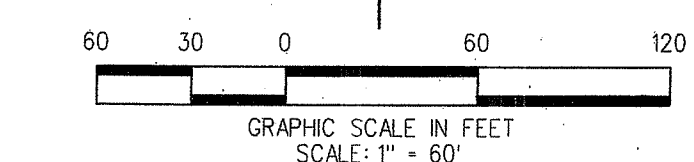
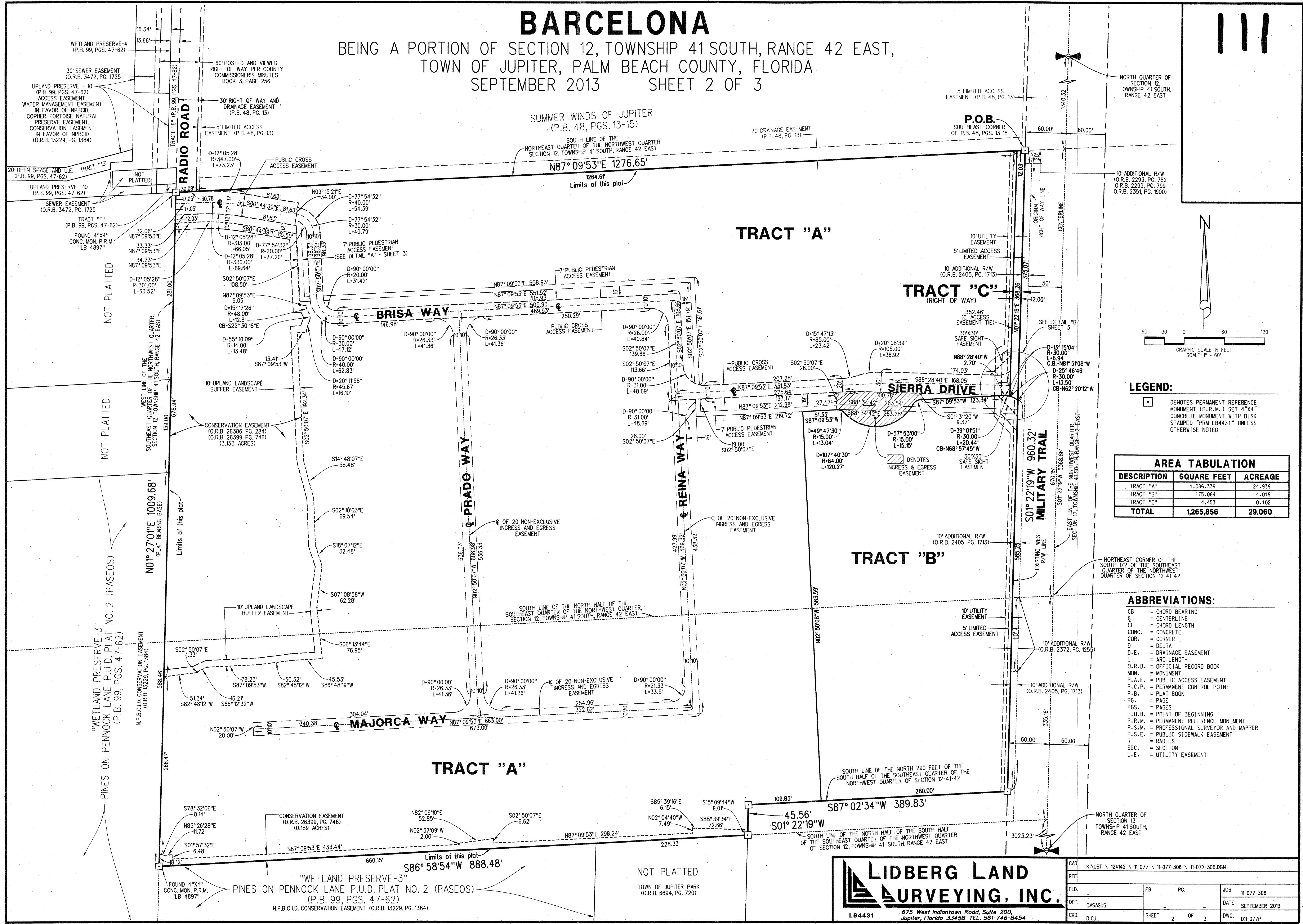


BARCELONA

BEING A PORTION OF SECTION 12, TOWNSHIP 41 SOUTH, RANGE 42 EAST,
TOWN OF JUPITER, PALM BEACH COUNTY, FLORIDA
SEPTEMBER 2013 SHEET 2 OF 3

111



LEGEND:

- DENOTES PERMANENT REFERENCE MONUMENT (P.R.M.) SET 4"x4" CONCRETE MONUMENT WITH DISK STAMPED "PRM LB4431" UNLESS OTHERWISE NOTED

AREA TABULATION		
DESCRIPTION	SQUARE FEET	ACREAGE
TRACT "A"	1,086,339	24.939
TRACT "B"	175,064	4.019
TRACT "C"	4,453	0.102
TOTAL	1,265,856	29.060

ABBREVIATIONS:

- CB = CHORD BEARING
- CL = CENTERLINE
- CL = CHORD LENGTH
- CONC. = CONCRETE
- COR. = CORNER
- D = DELTA
- D.E. = DRAINAGE EASEMENT
- L = ARC LENGTH
- O.R.B. = OFFICIAL RECORD BOOK
- MON. = MONUMENT
- P.A.E. = PUBLIC ACCESS EASEMENT
- P.C.P. = PERMANENT CONTROL POINT
- P.B. = PLAT BOOK
- PG. = PAGE
- PGS. = PAGES
- P.O.B. = POINT OF BEGINNING
- P.R.M. = PERMANENT REFERENCE MONUMENT
- P.S.M. = PROFESSIONAL SURVEYOR AND MAPPER
- P.S.E. = PUBLIC SIDEWALK EASEMENT
- R = RADIUS
- SEC. = SECTION
- U.E. = UTILITY EASEMENT

LIDBERG LAND SURVEYING, INC.

675 West Indiantown Road, Suite 200,
Jupiter, Florida 33458 TEL: 561-746-8454

CAD	K:\JUST \ 12442 \ 11-077 \ 11-077-306 \ 11-077-306.DGN		
REF.			
FLD.		PG.	JOB 11-077-306
OFF.	CASASUS		DATE SEPTEMBER 2013
CKD.	D.C.L.	SHEET 2 OF 3	DWG. D11-077P