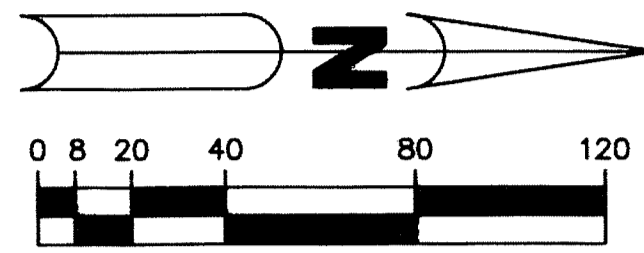


GRAMERCY COUNTY PARK

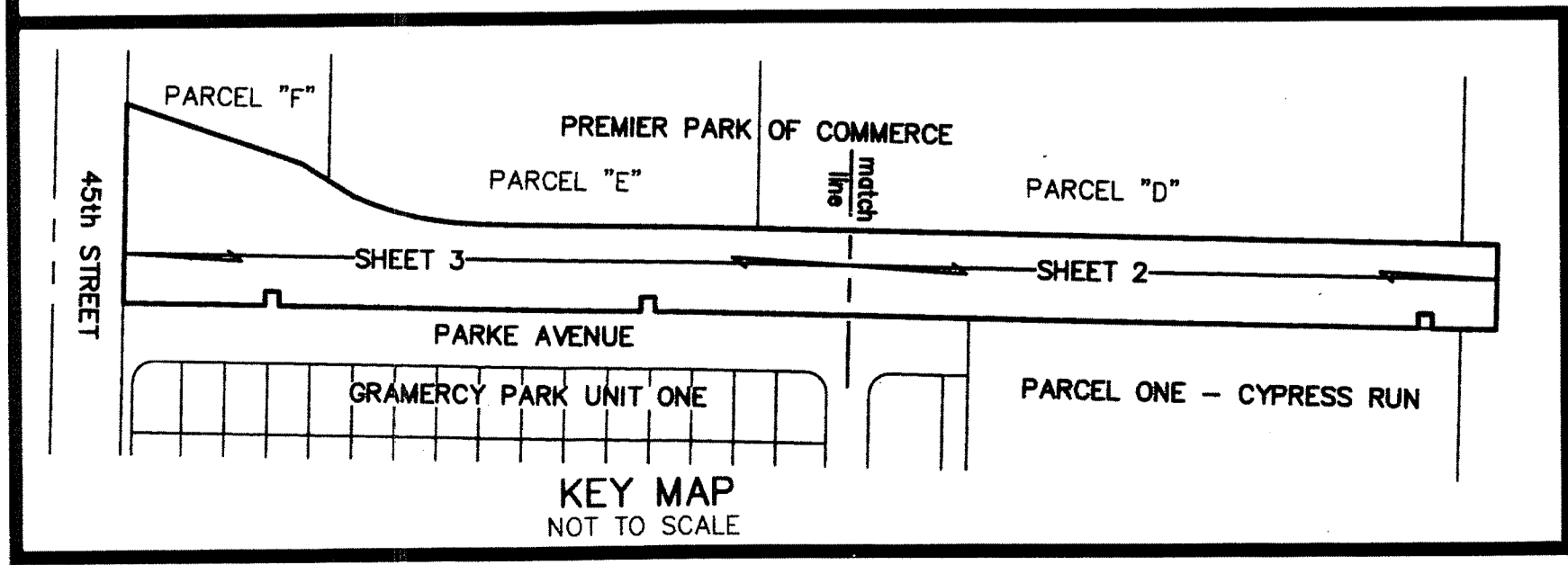
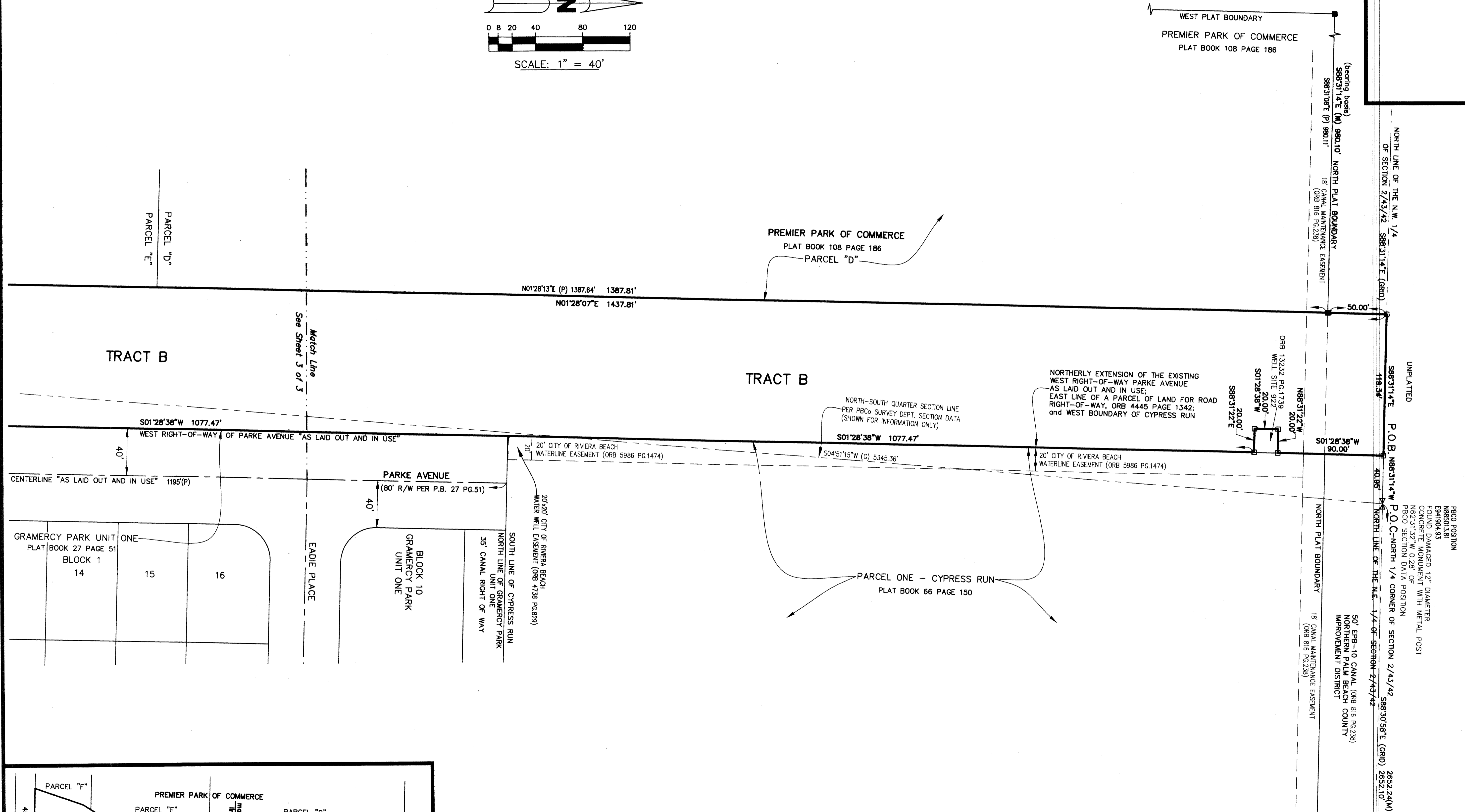
A PARCEL OF LAND LYING IN THE NORTH ONE-HALF (N 1/2) OF SECTION 2,
TOWNSHIP 43 SOUTH, RANGE 42 EAST, CITY OF WEST PALM, PALM BEACH COUNTY, FLORIDA

SHEET 2 OF 3



SCALE: 1" = 40'

114



THIS INSTRUMENT WAS PREPARED BY
JOHN E. PHILLIPS III, P.S.M. 4826

BROWN & PHILLIPS, INC.
CERTIFICATE OF AUTHORIZATION # LB 6473
1860 OLD OKEECHOBEE RD., SUITE 509
WEST PALM BEACH, FLORIDA 33409
561-615-3988, 615-3991 FAX

UNPLATTED

P.O.B. 118.34'

P.O.C.-NORTH 1/4 CORNER OF SECTION 2/43/42 2852.24(M)

P.O.C.-NORTH 1/4 CORNER OF SECTION 2/43/42 2852.10'

PRCO POSITION
N88°50'13.81"
E94°19'04.93"
FOUND DAMAGED 12" DIAMETER
CONCRETE MONUMENT WITH METAL POST
N62°31'32"W 0.28' OF
PRCO SECTION DATA POSITION

PRCO POSITION
N88°50'13.81"
E94°19'04.93"
N.E. CORNER OF
SECTION 2/43/42
FOUND PRCO
BRASS DISK

50' EPB-10 CANAL (ORB 816 PG.239)
NORTHERN PALM BEACH COUNTY
IMPROVEMENT DISTRICT

18' CANAL MAINTENANCE EASEMENT
(ORB 816 PG.239)