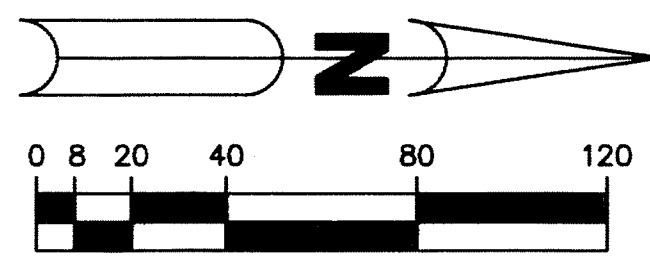


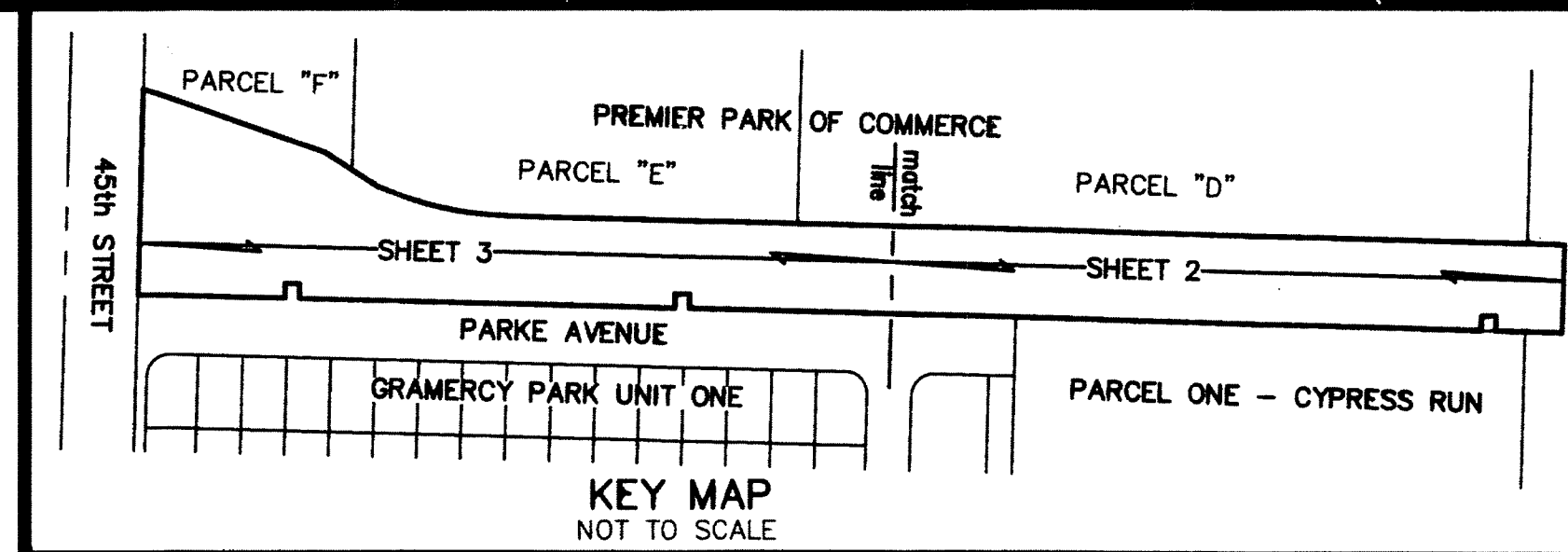
# GRAMERCY COUNTY PARK

A PARCEL OF LAND LYING IN THE NORTH ONE-HALF (N 1/2) OF SECTION 2,  
TOWNSHIP 43 SOUTH, RANGE 42 EAST, CITY OF WEST PALM, PALM BEACH COUNTY, FLORIDA

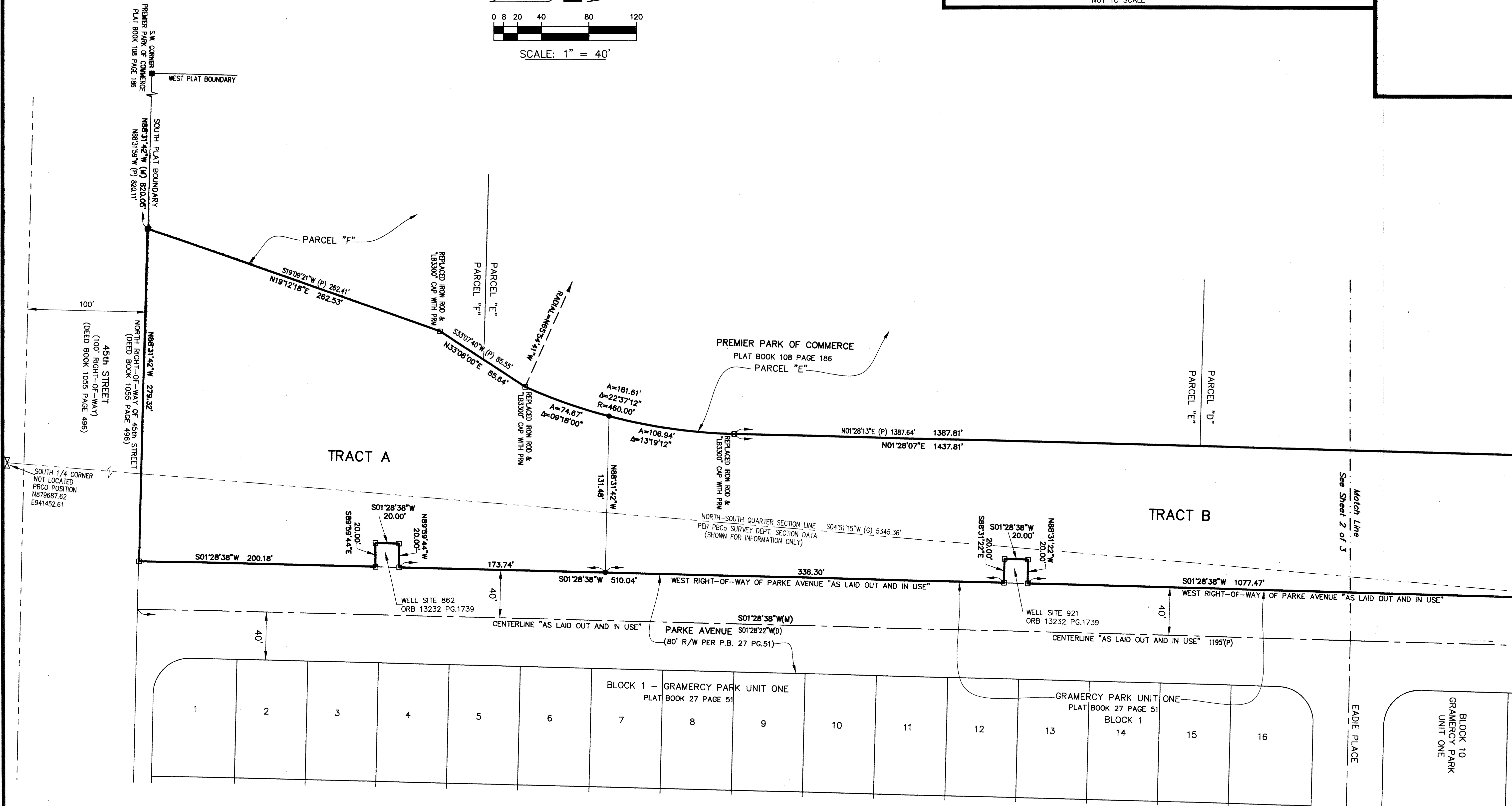
SHEET 3 OF 3



SCALE: 1" = 40'



115



THIS INSTRUMENT WAS PREPARED BY  
JOHN E. PHILLIPS III, P.S.M. 4826

**BROWN & PHILLIPS, INC.**

CERTIFICATE OF AUTHORIZATION # LB 6473  
1860 OLD OKEECHOBEE RD., SUITE 509  
WEST PALM BEACH, FLORIDA 33409  
561-615-3988, 615-3991 FAX