

THIS INSTRUMENT PREPARED BY
DAVID P. LINDLEY
OF
CAULFIELD and WHEELER, INC.
SURVEYORS - ENGINEERS - PLANNERS
7900 GLADES ROAD, SUITE 100
BOCA RATON, FLORIDA 33434 - (561)392-1991
APRIL - 2013

VILLAGGIO ISLES PARCELS B AND C REPLAT

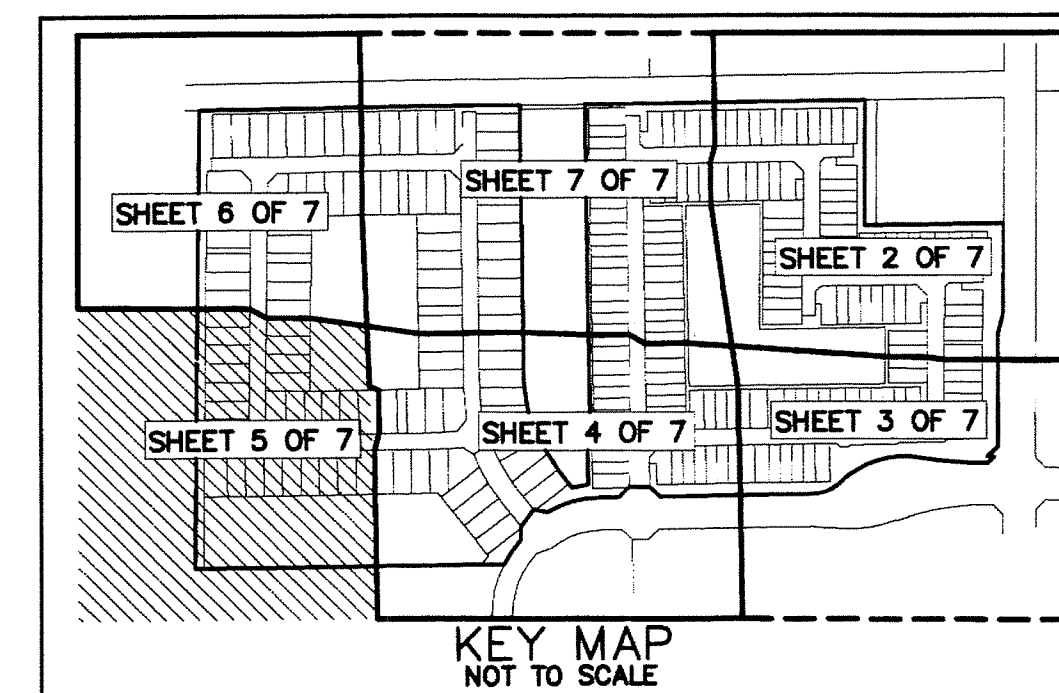
VILLAGGIO ISLES PUD, A PLANNED UNIT DEVELOPMENT
BEING A REPLAT OF PARCEL B AND PARCEL C, VILLAGGIO ISLES PUD REPLAT,
AS RECORDED PLAT BOOK 117, PAGES 102 THROUGH 109 OF THE PUBLIC RECORDS OF PALM BEACH COUNTY, FLORIDA
LYING IN SECTION 16 TOWNSHIP 46 SOUTH, RANGE 42 EAST, PALM BEACH COUNTY, FLORIDA

120

STATE OF FLORIDA
COUNTY OF PALM BEACH
THIS PLAT WAS FILED FOR
RECORD AT _____ M.
THIS _____ DAY OF
A.D. 20____ AND DULY RECORDED
IN PLAT BOOK _____ ON
PAGES _____ AND _____

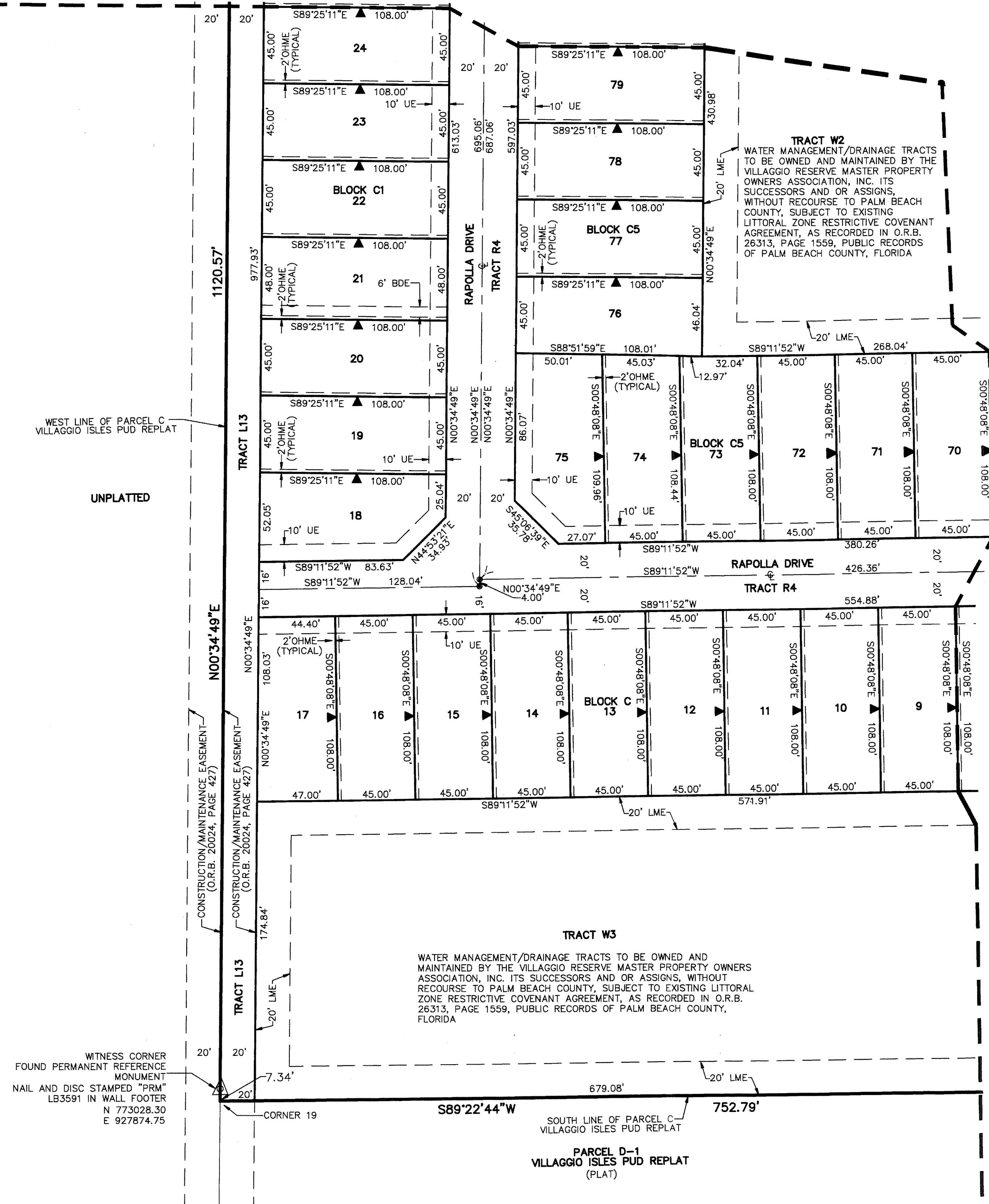
SHARON R. BOCK
CLERK AND COMPTROLLER

BY: _____
DEPUTY CLERK



SHEET 5 OF 7

MATCH LINE SHEET 6 OF 7



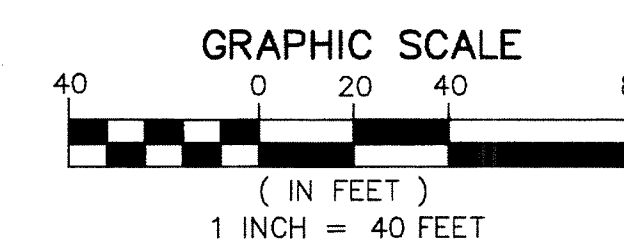
WEST LINE OF PARCEL C
VILLAGGIO ISLES PUD REPLAT

UNPLATTED

WITNESS CORNER
FOUND PERMANENT REFERENCE
MONUMENT
NAIL AND DISC STAMPED "PRM"
LB3591 IN WALL FOOTER
N 773028.30
E 927874.75

PARCEL D-1
VILLAGGIO ISLES PUD REPLAT
(PLAT)

MATCH LINE SHEET 4 OF 7



- LEGEND/ABBREVIATIONS**
- CL - CENTERLINE
 - CA - DELTA (CENTRAL ANGLE)
 - AC - ACRES
 - BDE - BUFFER DRAINAGE EASEMENT
 - CB - CHORD BEARING
 - CD - CHORD DISTANCE
 - DE - DRAINAGE EASEMENT
 - E - EASTING
 - FPL - FLORIDA POWER & LIGHT CO.
 - L - ARC LENGTH
 - LAE - LIMITED ACCESS EASEMENT
 - LB - LICENSED BUSINESS
 - LMAE - LAKE MAINTENANCE ACCESS EASEMENT
 - LME - LAKE MAINTENANCE EASEMENT
 - LSE - LIFT STATION EASEMENT
 - L.W.D.D. - LAKE WORTH DRAINAGE DISTRICT
 - N - NORTHING
 - OHME - OVERHANG/MAINTENANCE EASEMENT
 - O.R.B. - OFFICIAL RECORD BOOK
 - PBCUE - PALM BEACH COUNTY UTILITY EASEMENT
 - (PLAT) - INDICATES INDICATES PLAT BOOK 117, PAGE 102.
 - R - RADIUS
 - (R) - INDICATES RADIAL LINE
 - SF - SQUARE FEET
 - UE - UTILITY EASEMENT
 - ▲ - INDICATES "ZERO" SIDE OF LOT LINE
 - PRM - DENOTES PERMANENT REFERENCE MONUMENT
 - 4" x 4" x 24" CONCRETE MONUMENT STAMPED LB3591
 - PCP - DENOTES PERMANENT CONTROL POINT
 - NAIL AND METAL DISK STAMPED LB3591
 - ▲ DENOTES PERMANENT REFERENCE MONUMENT SET NAIL AND DISC STAMPED "PRM" LB 3591
- NOTES**
- COORDINATES, BEARINGS AND DISTANCES**
- COORDINATES SHOWN ARE GRID
DATUM = NAD 83 1990 ADJUSTMENT
ZONE = FLORIDA EAST
LINEAR UNIT = US SURVEY FEET
COORDINATE SYSTEM 1983 STATE PLANE
TRANSVERSE MERCATOR PROJECTION
ALL DISTANCES ARE GROUND
SCALE FACTOR = 1.000265
GROUND DISTANCE X SCALE FACTOR = GRID DISTANCE
BEARINGS AS SHOWN HEREON ARE GRID DATUM,
NAD 83 1990 ADJUSTMENT, FLORIDA EAST ZONE.

COORDINATE TABLE

MONUMENT	NORTHING (N)	EASTING (E)
FOUND PRM 1	N 773866.05	E 928849.43
FOUND PRM 2	N 773647.90	E 928848.43
FOUND PRM 3	N 773597.95	E 928836.27
FOUND PRM 4	N 773317.94	E 928835.07
FOUND PRM 5	N 773293.04	E 928809.96
SET PRM 6	N 773290.73	E 928846.74
SET PRM 7	N 773229.51	E 928449.38
SET PRM 8	N 773201.52	E 928381.38
SET PRM 9	N 773196.33	E 929010.49
SET PRM 10	N 773220.97	E 928895.14
SET PRM 11	N 773220.27	E 928835.15
SET PRM 12	N 773194.93	E 928910.50
SET PRM 13	N 773194.34	E 928868.46
SET PRM 14	N 773158.34	E 928732.54
SET PRM 15	N 773164.88	E 928700.73
SET PRM 16	N 773122.16	E 928670.60
SET PRM 17	N 773089.80	E 928669.45
SET PRM 18	N 773029.12	E 928627.44
SET PRM 19	N 773020.95	E 927874.67
FOUND PRM 20	N 774148.84	E 927886.10
SET PRM 21	N 774159.80	E 928669.35
SET PRM 22	N 773464.85	E 928679.08
SET PRM 23	N 773416.66	E 928686.82
SET PRM 24	N 773291.46	E 928723.14
SET PRM 25	N 773263.84	E 928760.04
SET PRM 26	N 773217.80	E 928796.41
SET PRM 27	N 773226.86	E 928835.04
SET PRM 28	N 773338.71	E 928833.48
SET PRM 29	N 773345.03	E 928839.78
SET PRM 30	N 774182.03	E 928828.34
FOUND PRM 31	N 774171.61	E 929512.53
FOUND PRM 32	N 773863.87	E 929511.20