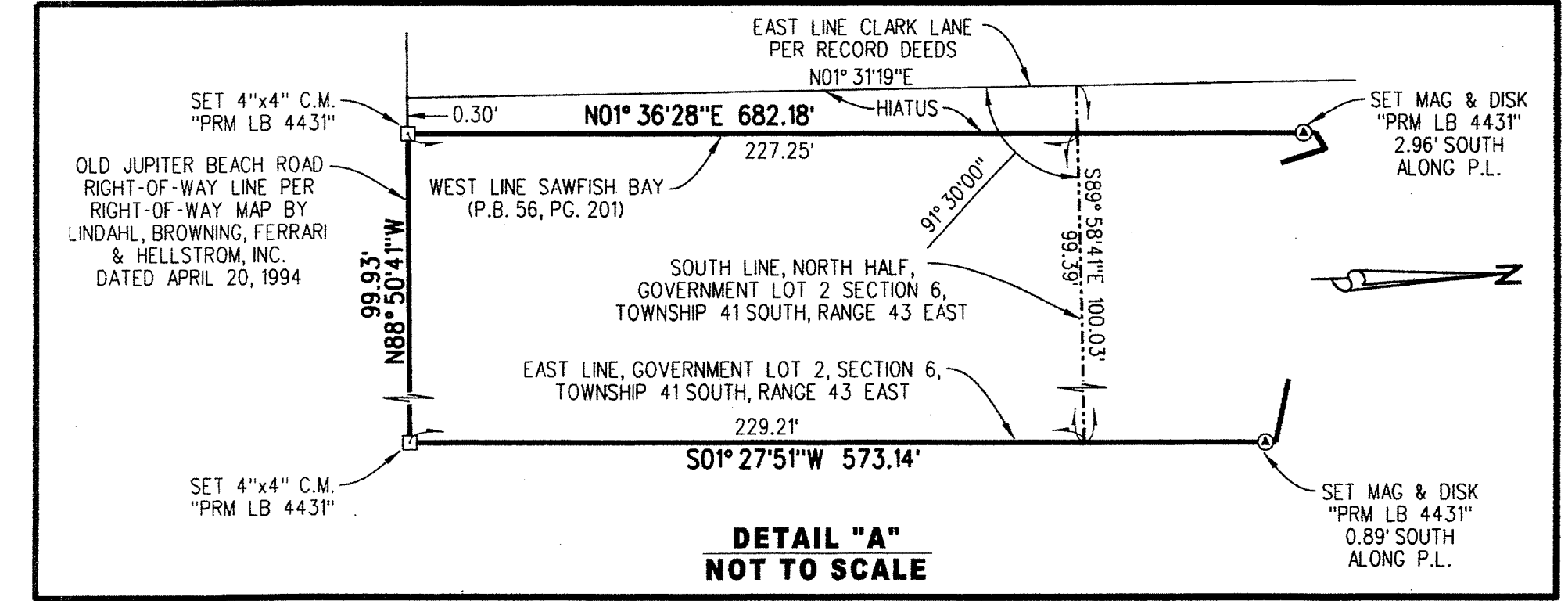
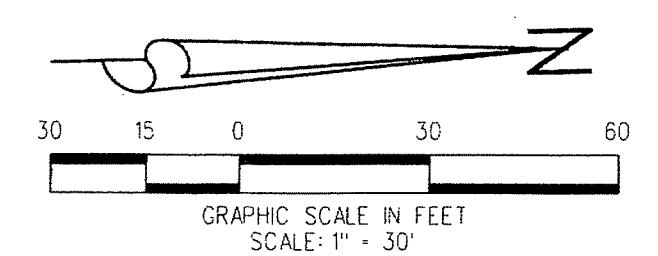
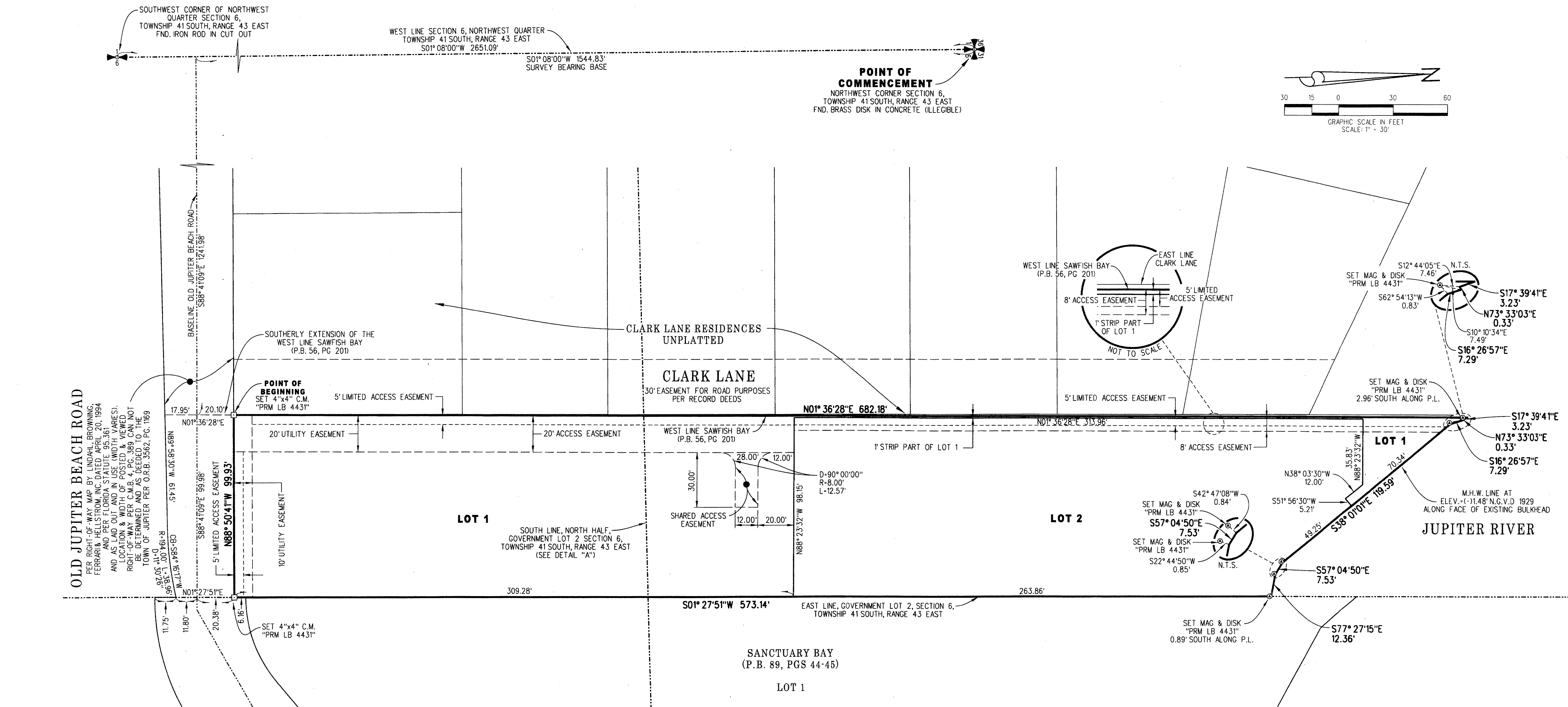


# SAWFISH BAY REPLAT NO. 1

133

ALL OF THE PLAT OF SAWFISH BAY, AS RECORDED IN PLAT BOOK 56, AT PAGE 201, OF THE PUBLIC RECORDS OF PALM BEACH COUNTY, FLORIDA, LYING WITHIN GOVERNMENT LOT 2, SECTION 6, TOWNSHIP 41 SOUTH, RANGE 43 EAST, PALM BEACH COUNTY, FLORIDA, TOGETHER WITH A PARCEL OF LAND LYING WITHIN SAID GOVERNMENT LOT 2, TOWN OF JUPITER, PALM BEACH COUNTY, FLORIDA

DECEMBER 2013 SHEET 2 OF 2



**LIDBERG LAND SURVEYING, INC.**  
 LB4431 675 West Indiantown Road, Suite 200, Jupiter, Florida 33458 TEL. 561-746-8454

CAD:	K\JUST \ 064143 \ 56-201 \ 13-070 \ 13-070-306 \ 13-070-306.DGN
REF:	
FLD:	
OFF:	R.J.W.
CKD:	D.C.L.
FB:	PG.
JOB:	13-070-306
DATE:	08/07/2013
SHEET:	2 OF 2
DWG:	D13-070P