

THIS INSTRUMENT PREPARED BY
JOHN E. PHILLIPS III, P.S.M. 4826

B BROWN & PHILLIPS, INC.
PROFESSIONAL SURVEYING SERVICES
CERTIFICATE OF AUTHORIZATION # LB 6473
1860 OLD OKEECHOBEE ROAD, SUITE 509
WEST PALM BEACH, FLORIDA 33409 561-615-3988, 615-3991 FAX
561-615-3988, 615-3991 FAX E-Mail: info@brown-phillips.com

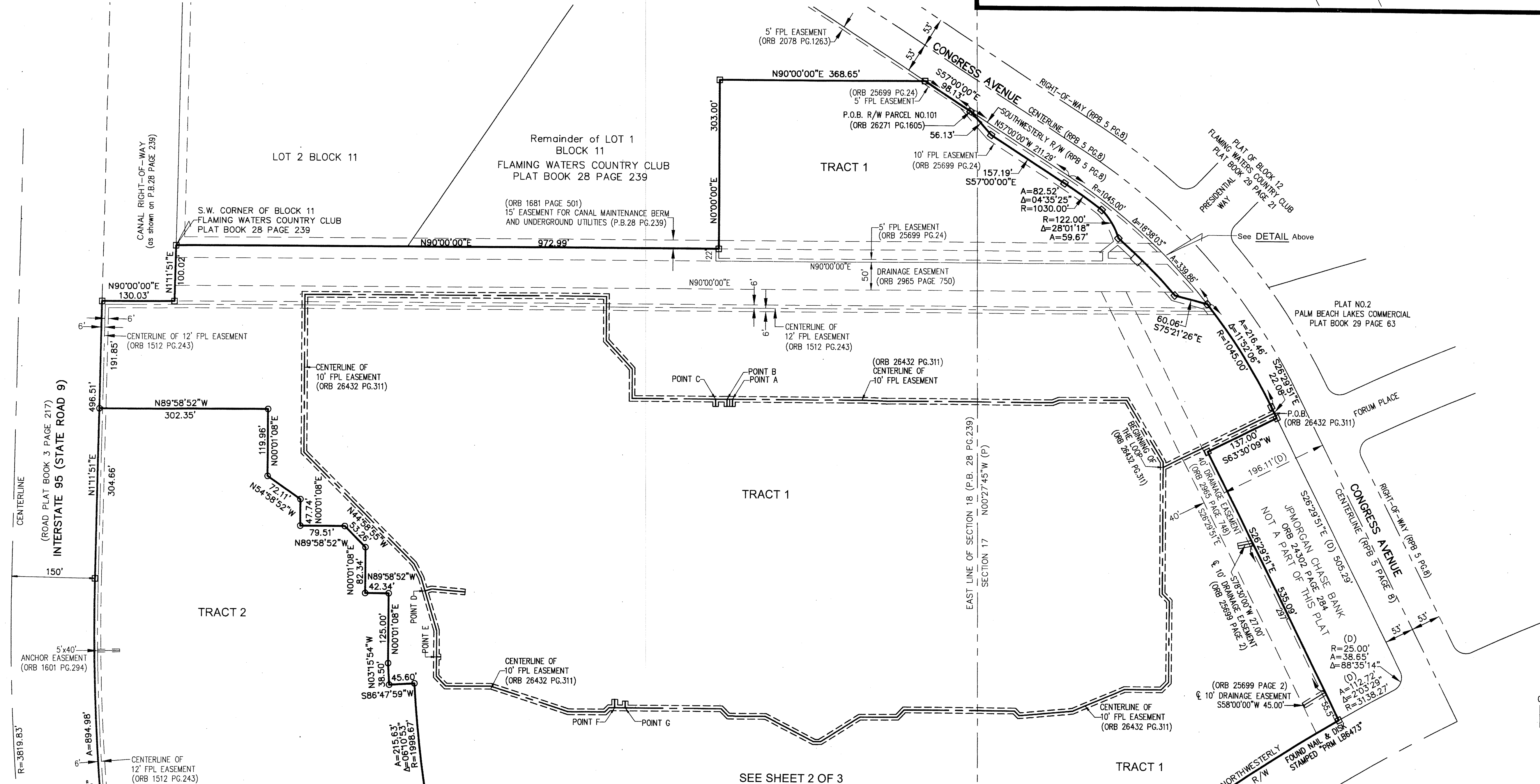
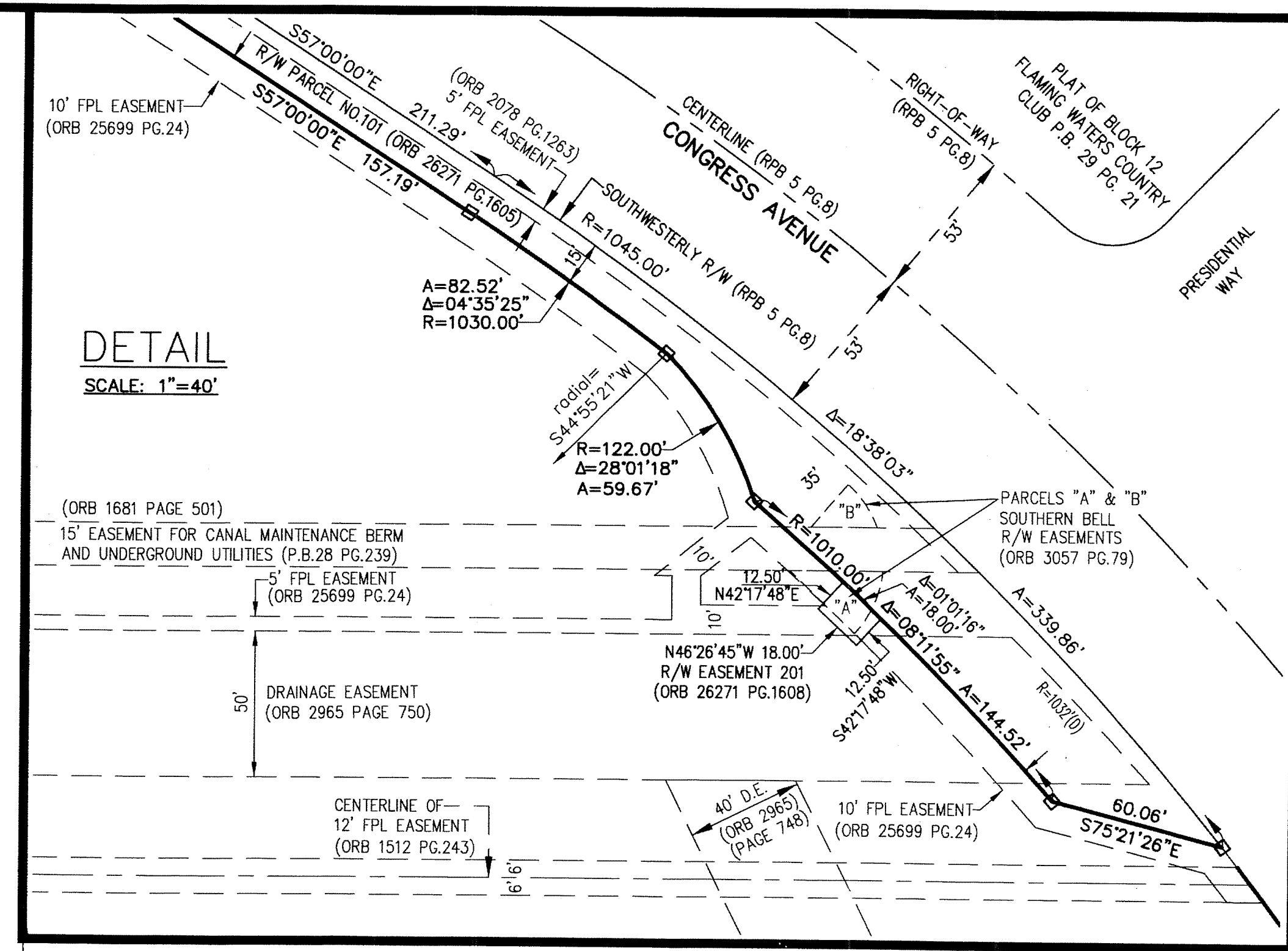
PALM BEACH OUTLETS REPLAT 1

A COMMERCIAL PLANNED DEVELOPMENT

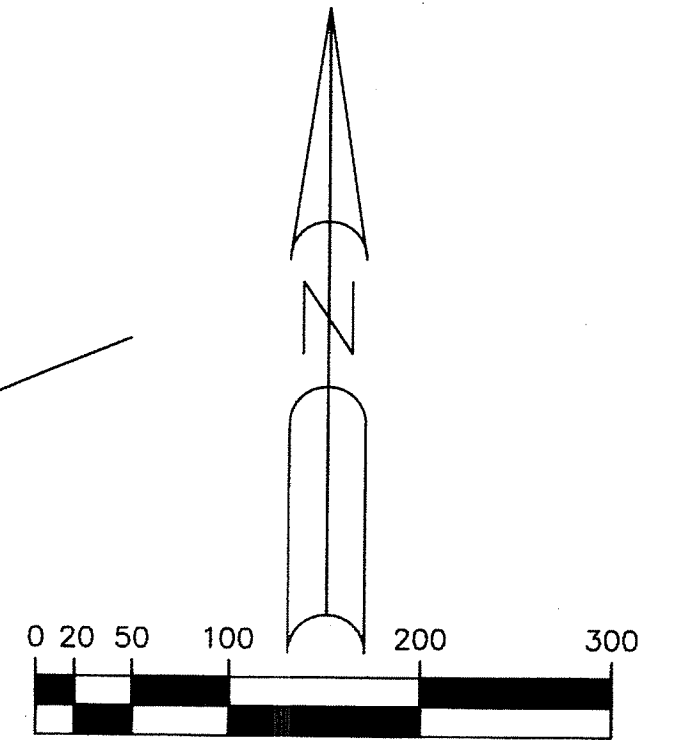
LYING IN SECTIONS 17, 18 & 19 TOWNSHIP 43 SOUTH, RANGE 43 EAST,
CITY OF WEST PALM BEACH, PALM BEACH COUNTY, FLORIDA, BEING A REPLAT
OF PALM BEACH OUTLETS, RECORDED IN PLAT BOOK 116, PAGE 98, OF
THE PUBLIC RECORDS OF PALM BEACH COUNTY, FLORIDA

SHEET 3 OF 3

138



- ABBREVIATIONS**
- P.O.B. - POINT OF BEGINNING
 - P.O.C. - POINT OF COMMENCEMENT
 - R - RADIUS
 - A - ARC LENGTH
 - P.B. - PLAT BOOK
 - ORB - OFFICIAL RECORD BOOK
 - RPB - ROAD PLAT BOOK
 - D.B. - DEED BOOK
 - D.E. - DRAINAGE EASEMENT
 - U.E. - UTILITY EASEMENT
 - PRM - PERMANENT REFERENCE MONUMENT
 - C.M. - CONCRETE MONUMENT
 - FND. - FOUND
 - FPL - FLORIDA POWER & LIGHT COMPANY
 - PBCo - PALM BEACH COUNTY
 - WPB - CITY OF WEST PALM BEACH
 - R/W - RIGHT-OF-WAY
 - ℄ - CENTERLINE
 - LB - LICENSED BUSINESS



SEE SHEET 2 OF 3