

THIS PLAT FILED FOR  
RECORD AT \_\_\_\_\_ M.  
THIS \_\_\_\_\_ DAY OF  
\_\_\_\_\_ 2013, AND  
DULY RECORDED IN PLAT  
BOOK NO. \_\_\_\_\_ ON  
PAGES \_\_\_\_\_ THROUGH  
\_\_\_\_\_

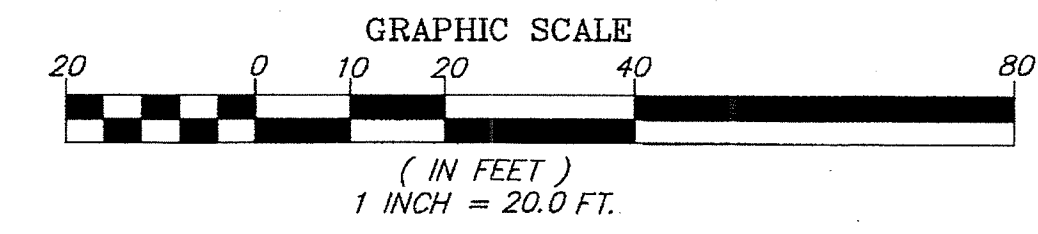
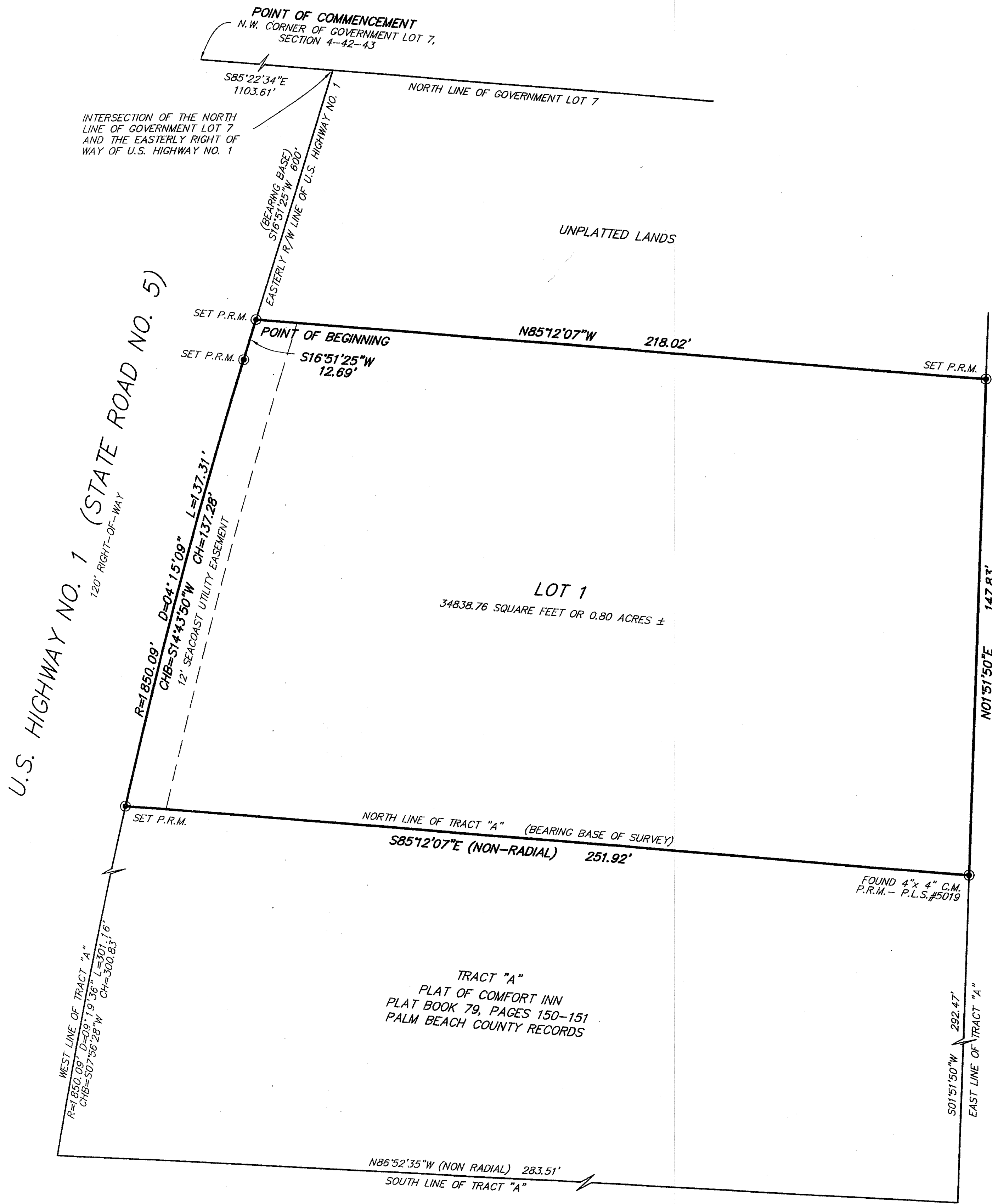
SHARON R. BOCK  
CLERK AND COMPTROLLER  
OF THE CIRCUIT COURT

BY \_\_\_\_\_  
DEPUTY CLERK

**LEGEND & ABBREVIATIONS**

- ORB = OFFICIAL RECORDS BOOK
- PG. = PAGE
- P.R.M. = PERMANENT REFERENCE MONUMENT
- P.L.S. = PROFESSIONAL LAND SURVEYOR
- P.S.M. = PROFESSIONAL SURVEYOR AND MAPPER
- L.B. = LICENSED BUSINESS
- PB = PLAT BOOK
- FDOT = FLORIDA DEPARTMENT OF TRANSPORTATION
- S.F. = SQUARE FEET
- M = MEASURED
- CCR = CERTIFIED CORNER RECORD
- PBCSD = PALM BEACH COUNTY SECTION DATA
- R = RADIUS
- L = LENGTH OF ARC
- D = DELTA
- CHB = CHORD BEARING
- CH = CHORD DISTANCE
- PBCR = PALM BEACH COUNTY RECORDS
- C.M. = CONCRETE MONUMENT
- ⊙ SET 4"x4" CONCRETE MONUMENT & DISC (P.R.M. P.L.S. 4134)

00052-204



TWELVE OAKS CONDOS  
PLAT BOOK 31, PAGES 48-49  
PALM BEACH COUNTY RECORDS

**CHASE BANK NO. 37429**

A PORTION OF GOVERNMENT LOT 7,  
SECTION 4, TOWNSHIP 42 SOUTH, RANGE 43 EAST,  
CITY OF PALM BEACH GARDENS, PALM BEACH COUNTY, FLORIDA.

SHEET 2 OF 2

PREPARED BY

**BLOOMSTER PROFESSIONAL LAND SURVEYING, INC.**

641 NORTHEAST SPENCER STREET  
JENSEN BEACH, FLORIDA 34957

PHONE (772) 334-0868  
FAX (772) 334-5283