

PERIMETER

SURVEYING & MAPPING
 Certificate of Authorization No. LB7264
 Prepared by: Jeff S. Hodapp, P.S.M.
 949A Clint Moore Road
 Boca Raton, Florida 33487
 Tel: (561) 241-9988
 Fax: (561) 241-5182

ATLANTIC COMMONS - PLAT THREE

A PORTION OF THE ATLANTIC COMMONS PUD
 BEING A REPLAT OF A PORTION OF TRACTS 33, 34, 35, 62, 63, 64, 65, 66, 67, 94, 95, 96, 97 AND 98 IN SECTION 17,
 TOWNSHIP 46 SOUTH, RANGE 42 EAST, "PALM BEACH FARMS CO. PLAT NO.1" (P.B. 2, PGS 26-28, P.B.C.R.)
 SECTION 17, TOWNSHIP 46 SOUTH, RANGE 42 EAST, PALM BEACH COUNTY, FLORIDA.

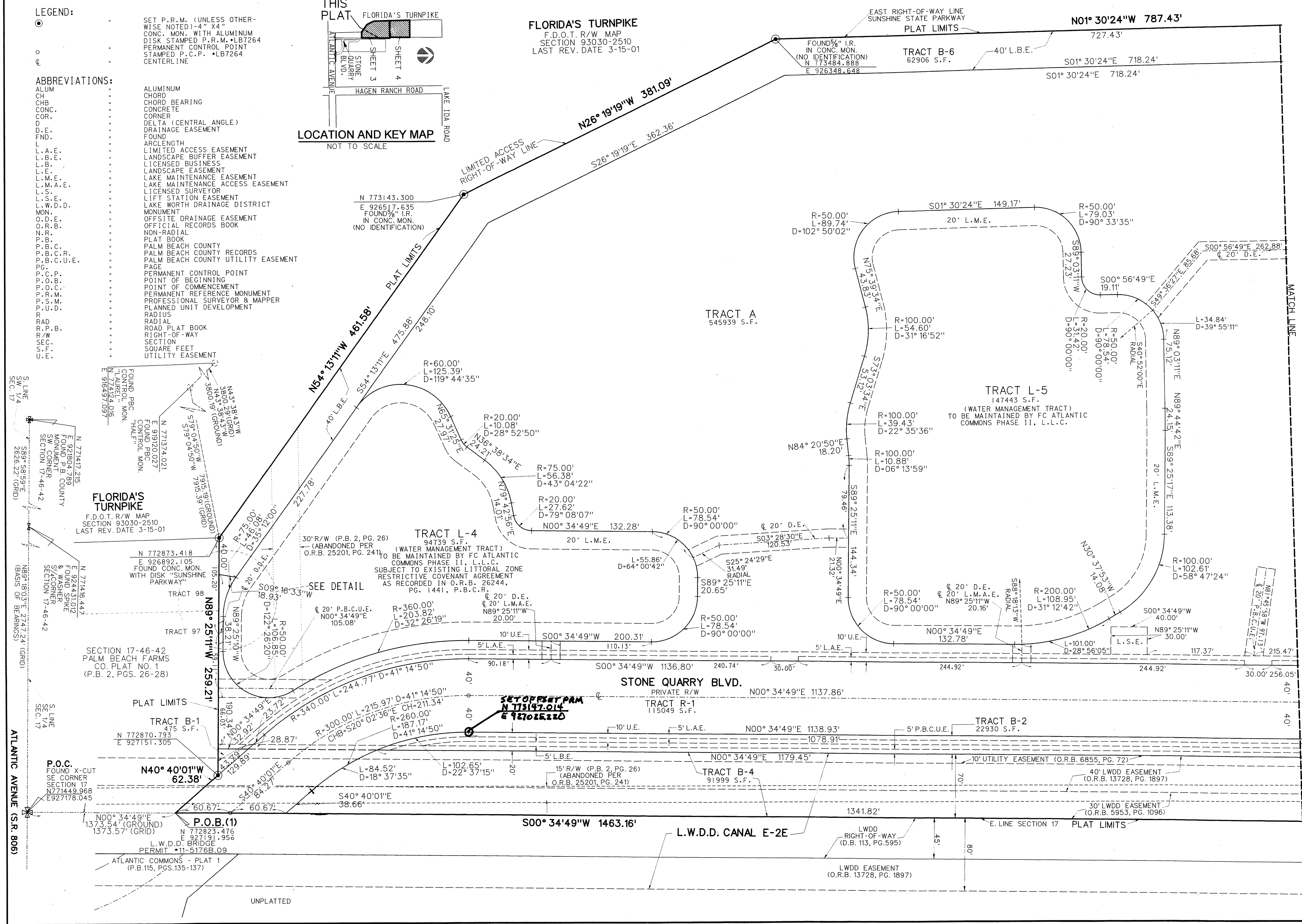
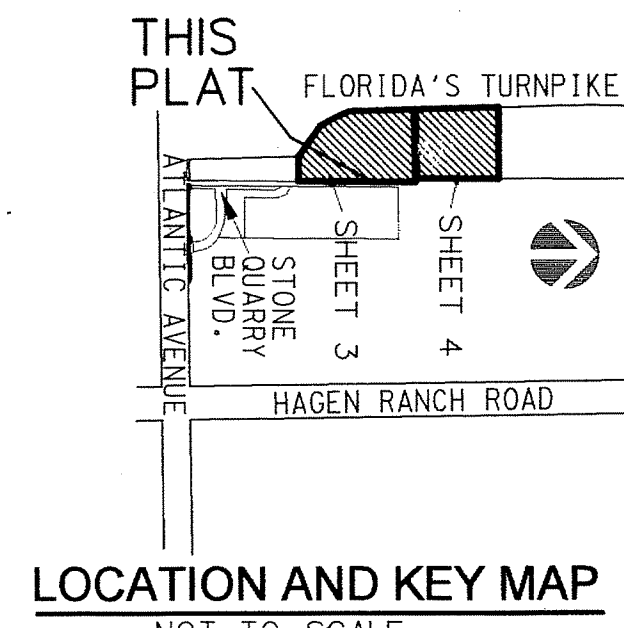
1145

LEGEND:

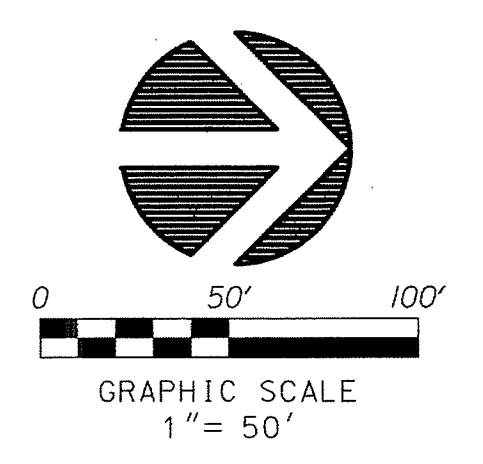
● SET P.R.M. (UNLESS OTHERWISE NOTED)-4" X4" CONC. MON. WITH ALUMINUM DISK STAMPED P.R.M. LB7264
 ○ PERMANENT CONTROL POINT STAMPED P.C.P. LB7264
 ○ CENTERLINE

ABBREVIATIONS:

ALUM.	ALUMINUM
CH	CHORD
CHB	CHORD BEARING
CONC.	CONCRETE
COR.	CORNER
D	DELTA (CENTRAL ANGLE)
D.E.	DRAINAGE EASEMENT
FND.	FOUND
L	ARCLENGTH
L.A.E.	LIMITED ACCESS EASEMENT
L.B.E.	LANDSCAPE BUFFER EASEMENT
L.B.	LICENSED BUSINESS
L.E.	LANDSCAPE EASEMENT
L.M.E.	LAKE MAINTENANCE EASEMENT
L.M.A.E.	LAKE MAINTENANCE ACCESS EASEMENT
L.S.	LICENSED SURVEYOR
L.S.E.	LIFT STATION EASEMENT
L.W.D.D.	LAKE WORTH DRAINAGE DISTRICT MONUMENT
MON.	MONUMENT
O.D.E.	OFFSITE DRAINAGE EASEMENT
O.R.B.	OFFICIAL RECORDS BOOK
N.R.	NON-RADIAL
P.B.C.	PALM BEACH COUNTY
P.B.C.R.	PALM BEACH COUNTY RECORDS
P.B.C.U.E.	PALM BEACH COUNTY UTILITY EASEMENT
P.C.P.	PERMANENT CONTROL POINT
P.O.B.	POINT OF BEGINNING
P.O.C.	POINT OF COMMENCEMENT
P.R.M.	PERMANENT REFERENCE MONUMENT
P.S.M.	PROFESSIONAL SURVEYOR & MAPPER
P.U.D.	PLANNED UNIT DEVELOPMENT
R	RADIUS
RADIAL	RADIAL
R.P.B.	ROAD PLAT BOOK
R/W	RIGHT-OF-WAY
SEC.	SECTION
S.F.	SQUARE FEET
U.E.	UTILITY EASEMENT



SHEET 3 OF 4



SEE SHEET 4

