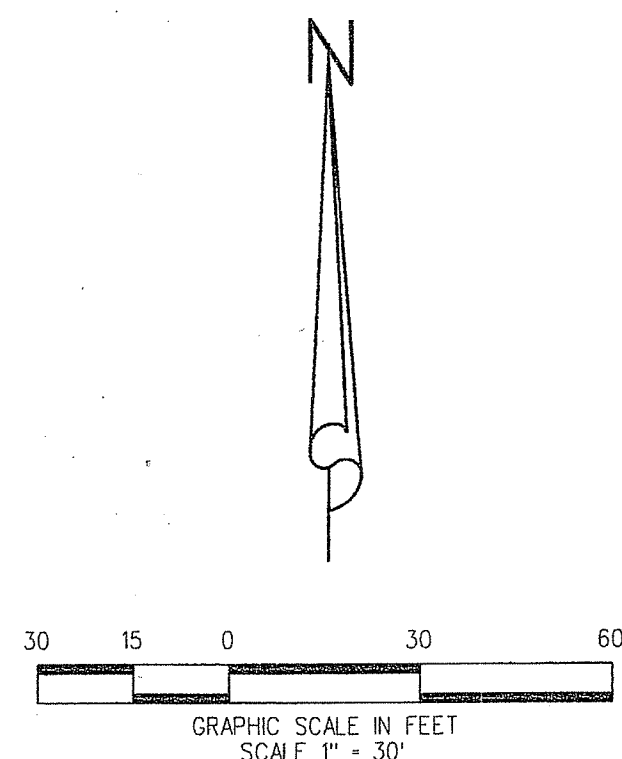
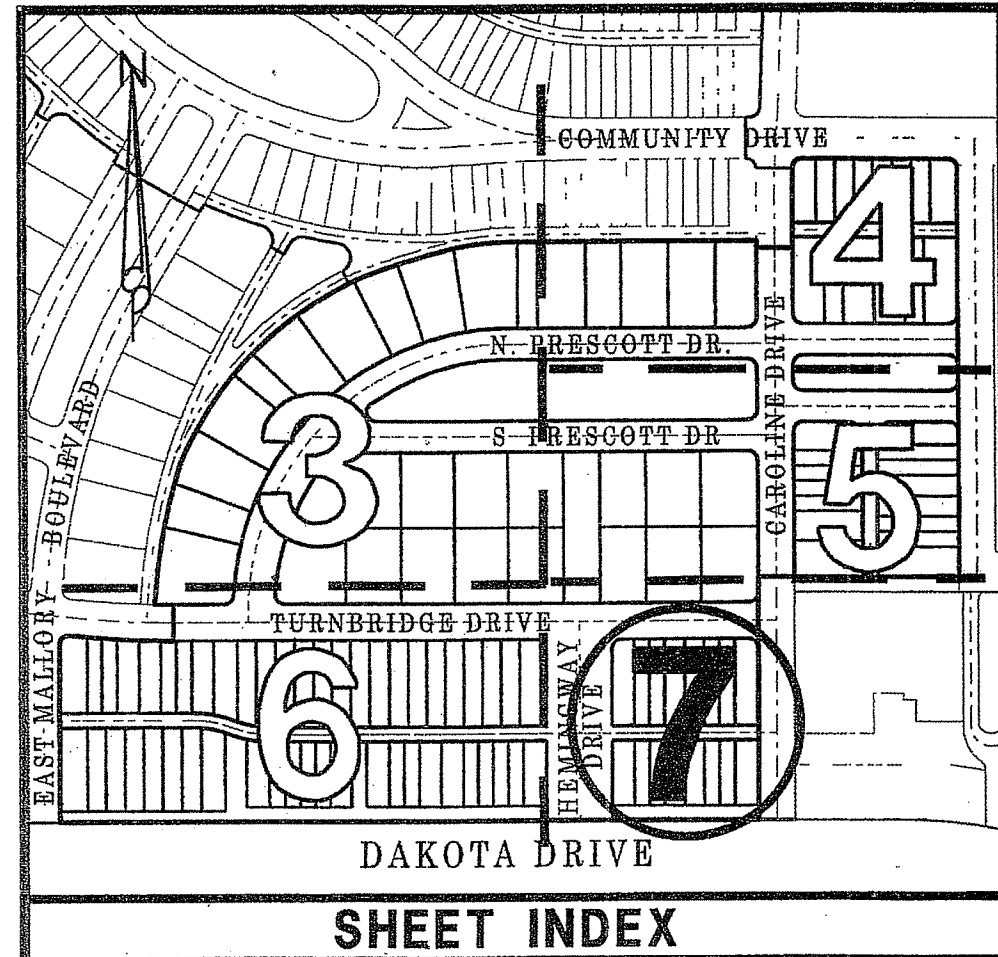


173

WINDSOR PARK AT ABACOA - PLAT NO. 3

BEING A REPLAT OF A PORTION OF TRACT "A" OF THE PLAT OF TRACT RN3R AT ABACOA - REPLAT AS RECORDED IN PLAT BOOK 112, PAGES 116 THROUGH 119, PUBLIC RECORDS OF PALM BEACH COUNTY, FLORIDA. LYING IN SECTION 14, TOWNSHIP 41 SOUTH, RANGE 42 EAST, TOWN OF JUPITER, PALM BEACH COUNTY, FLORIDA
JANUARY 2014
SHEET 7 OF 7



CURVE DATA:
D=90°00'00" R=13.00' L=20.42'

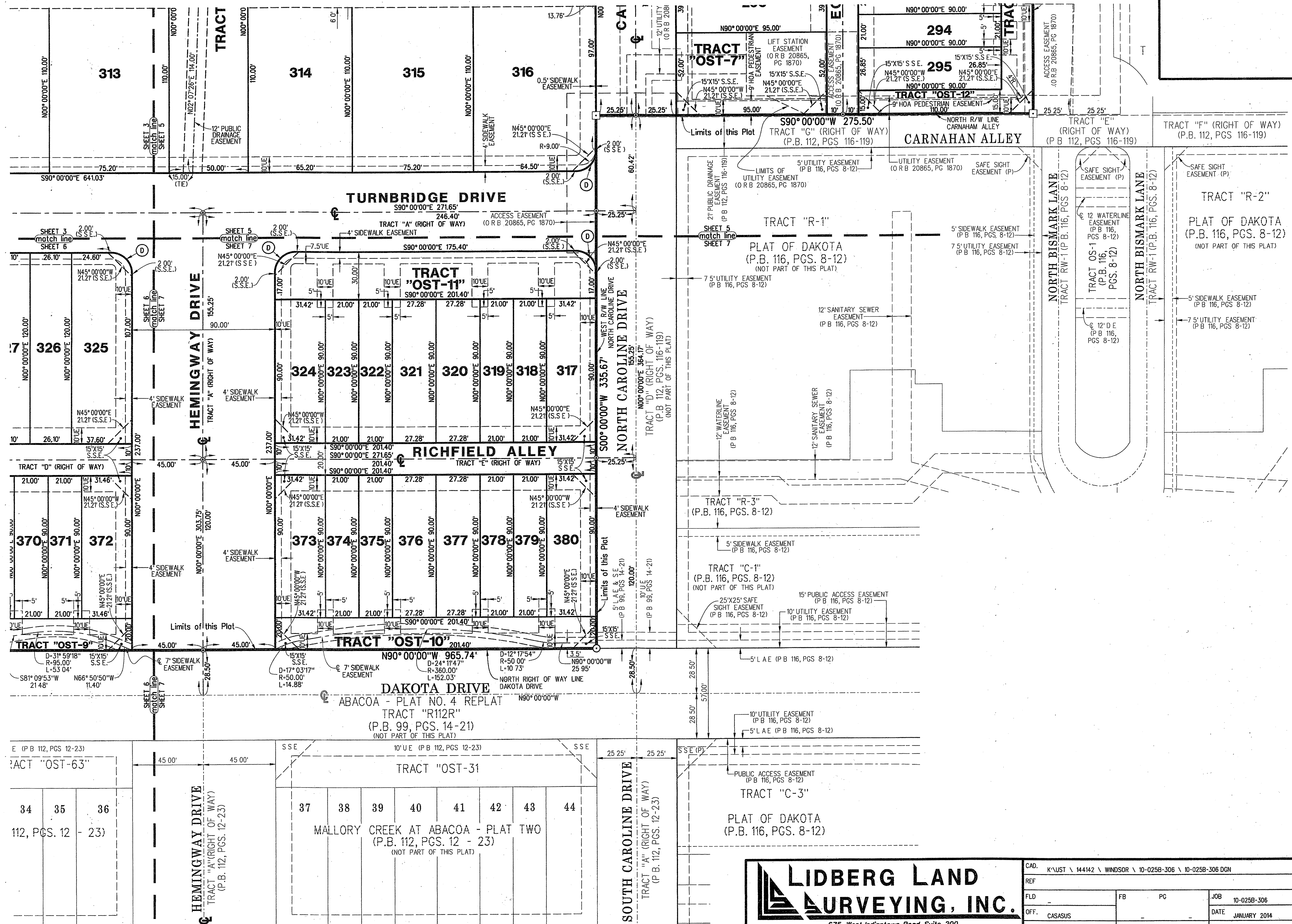
LEGEND:

- ⊙ DENOTES PERMANENT CONTROL POINT (P.C.P.) SET MAG NAIL & DISK STAMPED "PCP LB4431" UNLESS OTHERWISE NOTED
- ⊠ DENOTES PERMANENT REFERENCE MONUMENT (P.R.M.) SET 4"x4" CONCRETE MONUMENT WITH DISK STAMPED "PRM LB4431" UNLESS OTHERWISE NOTED
- ⊙ DENOTES PERMANENT REFERENCE MONUMENT (P.R.M.) SET MAG NAIL & DISK STAMPED "PRM LB4431" UNLESS OTHERWISE NOTED
- ⊕ DENOTES CENTERLINE OF RIGHT OF WAY

LINES WHICH INTERSECT CURVES ARE RADIAL UNLESS OTHERWISE NOTED

ABBREVIATIONS:

- CB = CHORD BEARING
- CL = CHORD LENGTH
- D = DELTA
- D.E. = DRAINAGE EASEMENT
- F.P.L. = FLORIDA POWER & LIGHT
- L = ARC LENGTH
- L.A.E. = LIMITED ACCESS EASEMENT
- O.R.B. = OFFICIAL RECORD BOOK
- N.E. = NORTHEAST
- N.W. = NORTHWEST
- (P) = AS SHOWN ON PLAT
- P.C.P. = PERMANENT CONTROL POINT
- P.B. = PLAT BOOK
- P.D.E. = PUBLIC DRAINAGE EASEMENT
- PG. = PAGE
- P.R.M. = PERMANENT REFERENCE MONUMENT
- P.S.M. = PROFESSIONAL SURVEYOR AND MAPPER
- R = RADIUS
- R.W.L.E. = RAW WATER LINE EASEMENT
- S.E. = SOUTHEAST
- S.S.E. = SAFE SIGHT EASEMENT
- S.W. = SOUTHWEST
- U.E. = UTILITY EASEMENT



LIDBERG LAND SURVEYING, INC.
 675 West Indiantown Road, Suite 200, Jupiter, Florida 33458 TEL: 561-746-9454

CAD. K:\UST \ 14412 \ WINDSOR \ 10-0258-306 \ 10-0258-306.DGN			
REF			
FLD	FB	PG	JOB 10-0258-306
OFF. CASASUS			DATE JANUARY 2014
CKD. DCL	SHEET 7	OF 7	DWG. 010-0258PPP