

THIS INSTRUMENT PREPARED BY
DAVID P. LINDLEY
OF
CAULFIELD and WHEELER, INC.
SURVEYORS - ENGINEERS - PLANNERS
7900 GLADES ROAD, SUITE 100
BOCA RATON, FLORIDA 33434 - (561)392-1991
JANUARY - 2013

BOCA POINTE COUNTRY CLUB P.U.D. PLAT TWO

BEING A REPLAT OF TRACT X-1, BOCA POINTE NO. 1, ACCORDING TO THE PLAT THEREOF,
AS RECORDED IN PLAT BOOK 42, PAGES 141 THROUGH 143 OF THE PUBLIC RECORDS OF PALM BEACH COUNTY, FLORIDA.
TOGETHER WITH
CLUBHOUSE TRACT R AND TRACT X-2-R, BOCA POINTE COUNTRY CLUB P.U.D., ACCORDING TO THE PLAT THEREOF,
AS RECORDED IN PLAT BOOK 90, PAGES 56 AND 57 OF THE PUBLIC RECORDS OF PALM BEACH COUNTY, FLORIDA.
LYING IN SECTION 28, TOWNSHIP 47 SOUTH, RANGE 42 EAST, PALM BEACH COUNTY, FLORIDA.

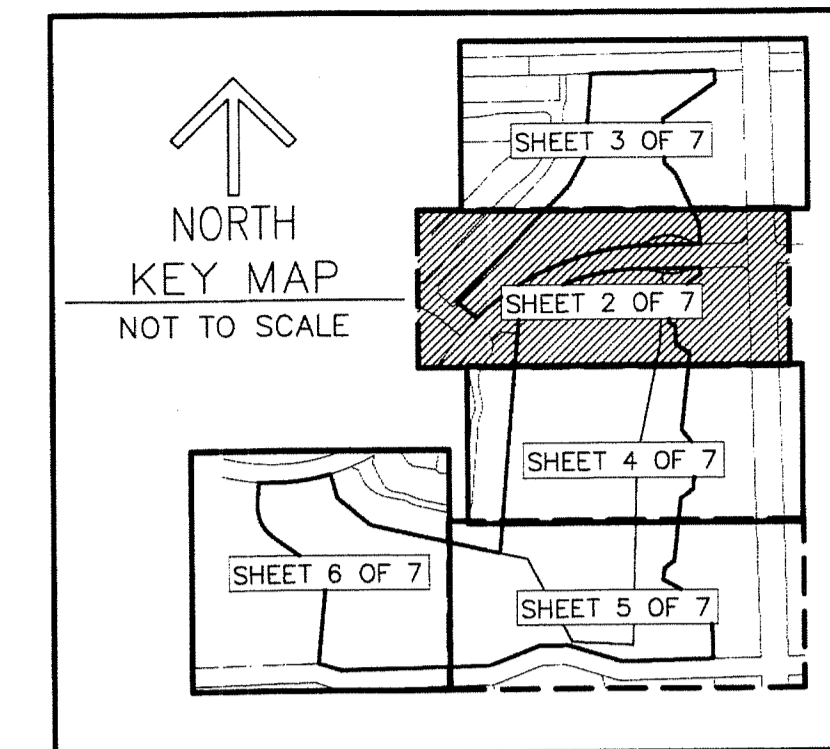
184

STATE OF FLORIDA
COUNTY OF PALM BEACH
THIS PLAT WAS FILED FOR
RECORD AT _____ M.
THIS _____ DAY OF
A.D. 2014 AND DULY RECORDED
IN PLAT BOOK _____ ON
PAGES _____ AND _____

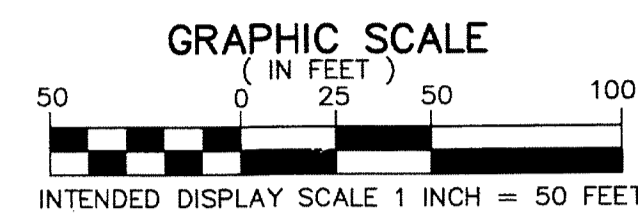
SHARON R. BOCK
CLERK AND COMPTROLLER

BY: _____
DEPUTY CLERK

SHEET 2 OF 7



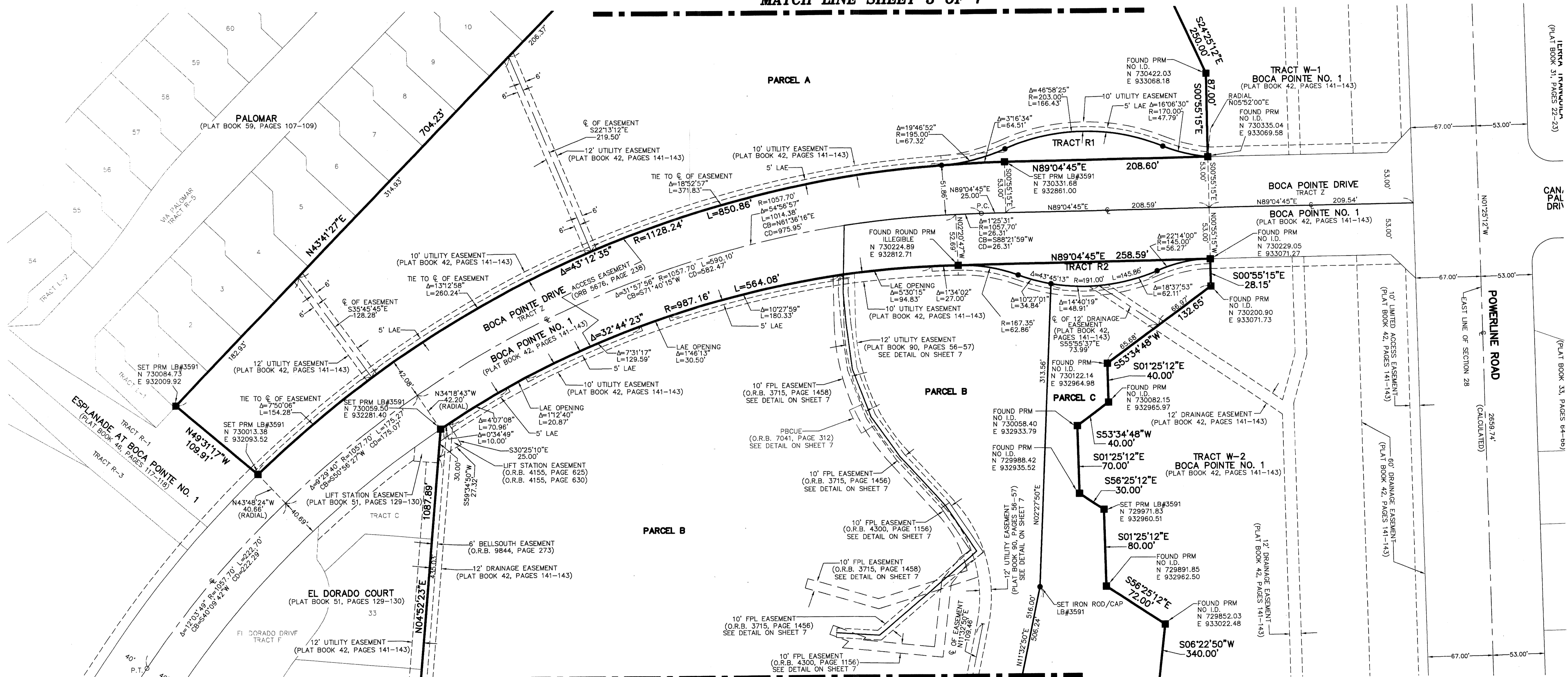
NOTES
COORDINATES, BEARINGS AND DISTANCES
COORDINATES SHOWN ARE GRID DATUM = NAD 83 1990
ADJUSTMENT ZONE = FLORIDA EAST
LINEAR UNIT = US SURVEY FEET
COORDINATE SYSTEM 1983 STATE PLANE TRANSVERSE
MERCATOR PROJECTION
ALL DISTANCES ARE GROUND
SCALE FACTOR = 1.000029298
GROUND DISTANCE X SCALE FACTOR = GRID DISTANCE
BEARINGS AS SHOWN HEREON ARE GRID DATUM,
NAD 83 1990 ADJUSTMENT, FLORIDA EAST ZONE.



LEGEND/ABBREVIATIONS

- CL - CENTERLINE
- Δ - DELTA (CENTRAL ANGLE)
- FPL - FLORIDA POWER & LIGHT CO.
- L - ARC LENGTH
- LB - LICENSED BUSINESS
- O.R.B. - OFFICIAL RECORD BOOK
- R - RADIUS
- LAE - LIMITED ACCESS EASEMENT
- PBCUE - PALM BEACH COUNTY UTILITY EASEMENT
- PRM - DENOTES PERMANENT REFERENCE MONUMENT
4" x 4" x 24" CONCRETE MONUMENT
- PCP - DENOTES PERMANENT CONTROL POINT
NAIL AND METAL DISK STAMPED LB3591
- - DENOTES SET IRON ROD WITH CAP LB3591

MATCH LINE SHEET 3 OF 7



MATCH LINE SHEET 4 OF 7