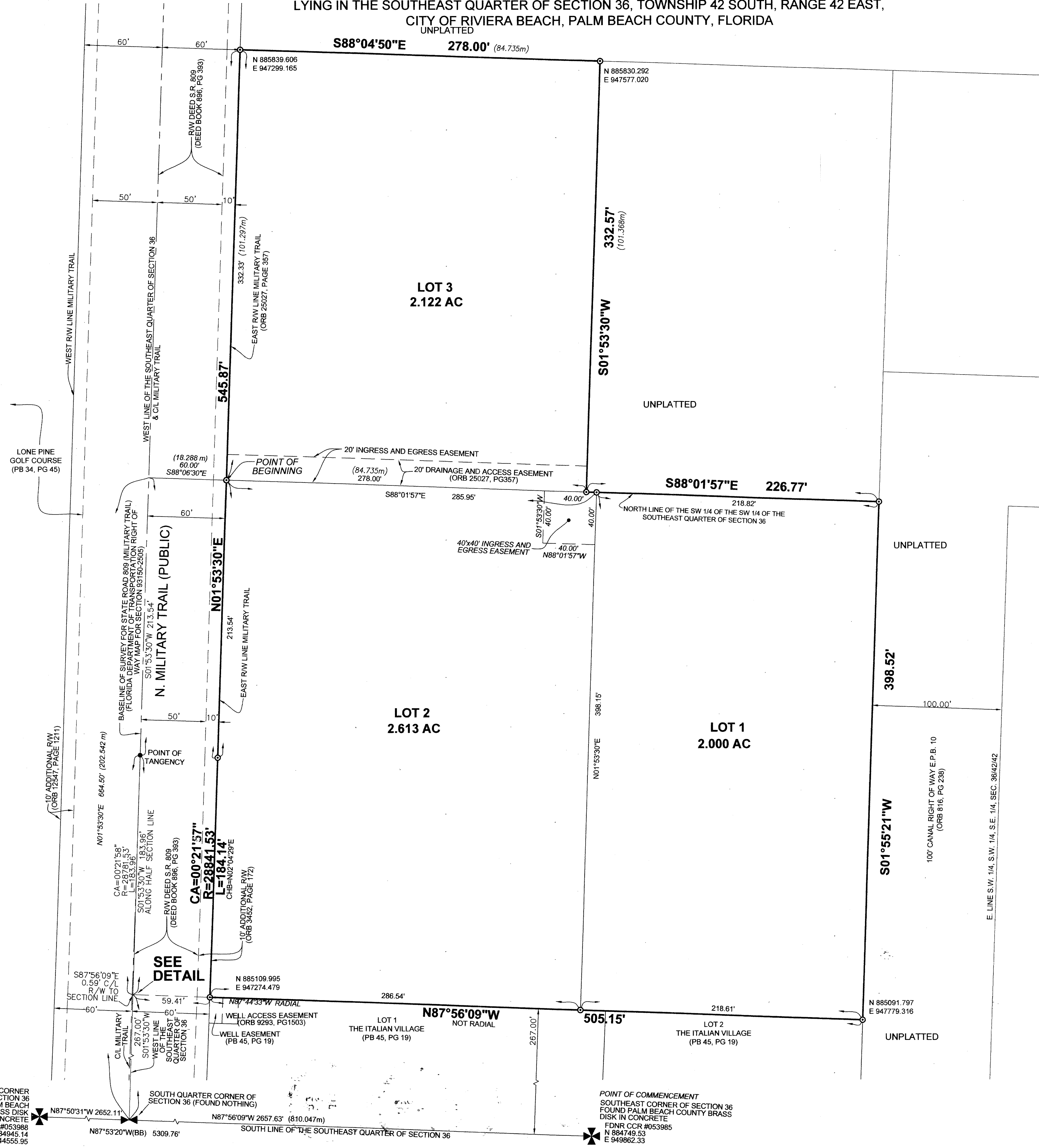
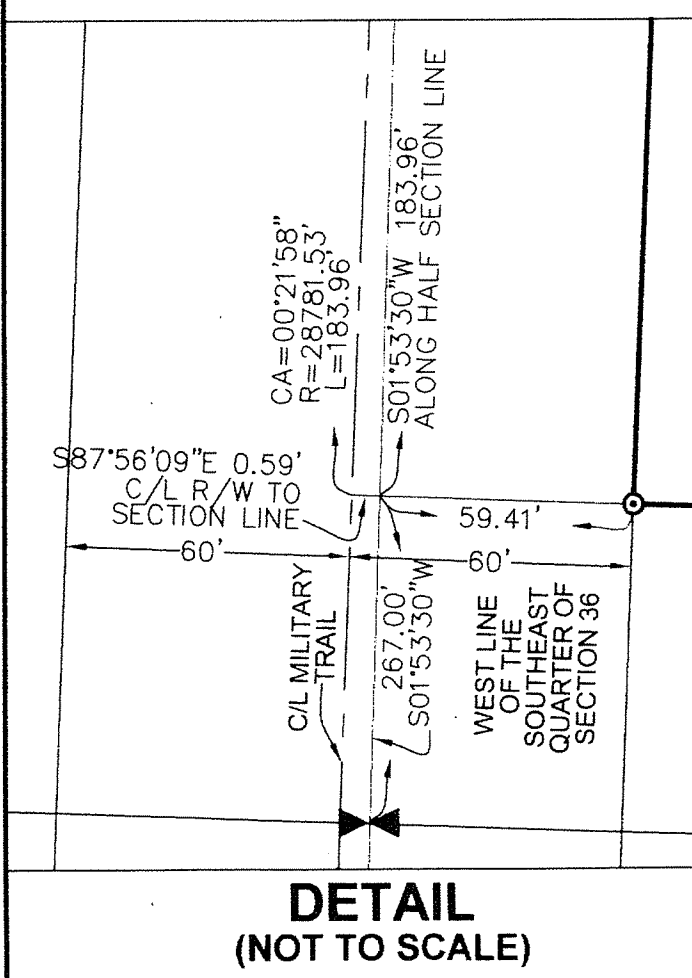
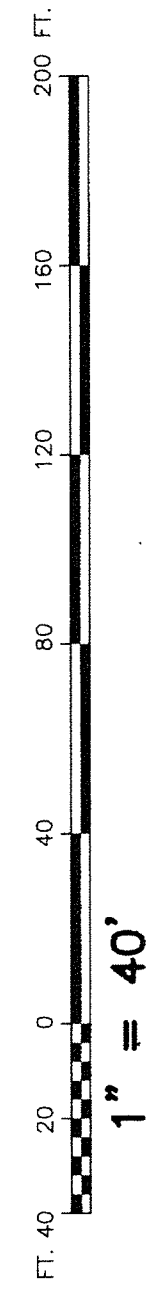


13



LEGEND:
 AC = ACRES
 (BB) = BASE BEARING
 C/L = A CENTERLINE
 CA = CENTRAL ANGLE
 CCR = CERTIFIED CORNER RECORD
 CHB = CHORD BEARING
 FDNR = FLORIDA DEPARTMENT OF NATURAL RESOURCES
 L = ARC LENGTH DISTANCE
 M = METERS
 ORB = OFFICIAL RECORDS BOOK
 PB = PLAT BOOK
 PG = PAGE
 R/W = RIGHT OF WAY
 R = RADIUS DISTANCE
 S.R. = STATE ROAD
 SF = SQUARE FEET
 ○ = A SET PERMANENT REFERENCE MONUMENT
 STAMPED "LB 7344 P.R.M." (UNLESS OTHERWISE NOTED)

SURVEYOR'S NOTES:
 1. THE COORDINATES SHOWN HEREON ARE STATE PLANE GRID COORDINATES ACCORDING TO THE TRANSVERSE MERCATOR PROJECTION OF THE FLORIDA EAST ZONE, N.A.D. 83, PER THE 1990 ADJUSTMENT.

SOUTHWEST CORNER OF SECTION 36 FOUND PALM BEACH COUNTY BRASS DISK IN CONCRETE FDNR CCR #053988 N 884945.14 E 944555.95

SOUTH QUARTER CORNER OF SECTION 36 (FOUND NOTHING)

POINT OF COMMENCEMENT SOUTHEAST CORNER OF SECTION 36 FOUND PALM BEACH COUNTY BRASS DISK IN CONCRETE FDNR CCR #053985 N 884749.53 E 949862.33

ALS ASSOCIATED LAND SURVEYORS, INC.
 4152 W. BLUE HERON BLVD. - SUITE 121
 RIVIERA BEACH, FLORIDA 33404
 PHONE: (561) 848-2102 L.B. NO. 7344 EMAIL: ALS@ALSSURVEY.NET

RECORD PLAT
 RAPIDS SOUTH

B₁/3/14