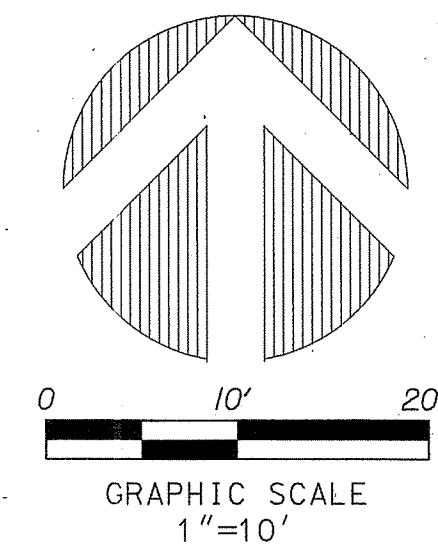


PERIMETER
 SURVEYING & MAPPING
 Prepared by: Jeff S. Hodapp, P.S.M.
 Certificate of Authorization No. LB7264
 949A Clint Moore Road
 Boca Raton, Florida, 33487
 Tel: (561) 241-9988
 Fax: (561) 241-5182

RENAISSANCE COMMONS REPLAT 1, A P.U.D.

A REPLAT OF LOTS 97-106 AND A PORTION OF TRACT B-3, "RENAISSANCE COMMONS, A P.U.D."
 (P.B. 102, PGS. 57-62, P.B.C.R.) IN SECTION 20, TOWNSHIP 45 SOUTH, RANGE 43, EAST,
 CITY OF BOYNTON BEACH, PALM BEACH COUNTY, FLORIDA.
 JANUARY, 2014

30



SHEET 2 OF 2

LEGEND:

- ⊙ SET P.R.M. (UNLESS OTHERWISE NOTED) - ALUMINUM DISK STAMPED *LB7264 IN 4"x4" CONC. MON.
- P.C.P. CENTERLINE

ABBREVIATIONS:

- AC. ACRES
- CHD CHORD BEARING
- CONC. CONCRETE
- COR. CORNER
- D DELTA (CENTRAL ANGLE)
- D.E. DRAINAGE EASEMENT
- I.R. IRON ROD
- I.R.-C. IRON ROD AND CAP
- L ARCLength
- L.A.E. LIMITED ACCESS EASEMENT
- L.B. LICENSED BUSINESS
- L.B.E. LANDSCAPE BUFFER EASEMENT
- L.M.S. LAKE MAINTENANCE EASEMENT
- L.M.A.E. LAKE MAINTENANCE ACCESS EASEMENT
- L.S. LICENSED SURVEYOR
- L.S.E. LIFT STATION EASEMENT
- L.W.D.D. LAKE WORTH DRAINAGE DISTRICT
- MON. MONUMENT
- O.R.B. OFFICIAL RECORDS BOOK
- N.R. NON-RADIAL
- P.B. PLAT BOOK
- P.B.C.R. PALM BEACH COUNTY RECORDS
- PG. PAGE
- P.C.P. PERMANENT CONTROL POINT
- P.O.B. POINT OF BEGINNING
- P.O.C. POINT OF COMMENCEMENT
- P.R.M. PERMANENT REFERENCE MONUMENT
- P.S.M. PROFESSIONAL SURVEYOR & MAPPER
- P.U.D. PLANNED UNIT DEVELOPMENT
- R. RADIUS
- R/W RIGHT-OF-WAY
- SEC. SECTION
- S.F. SQUARE FEET
- U.E. UTILITY EASEMENT

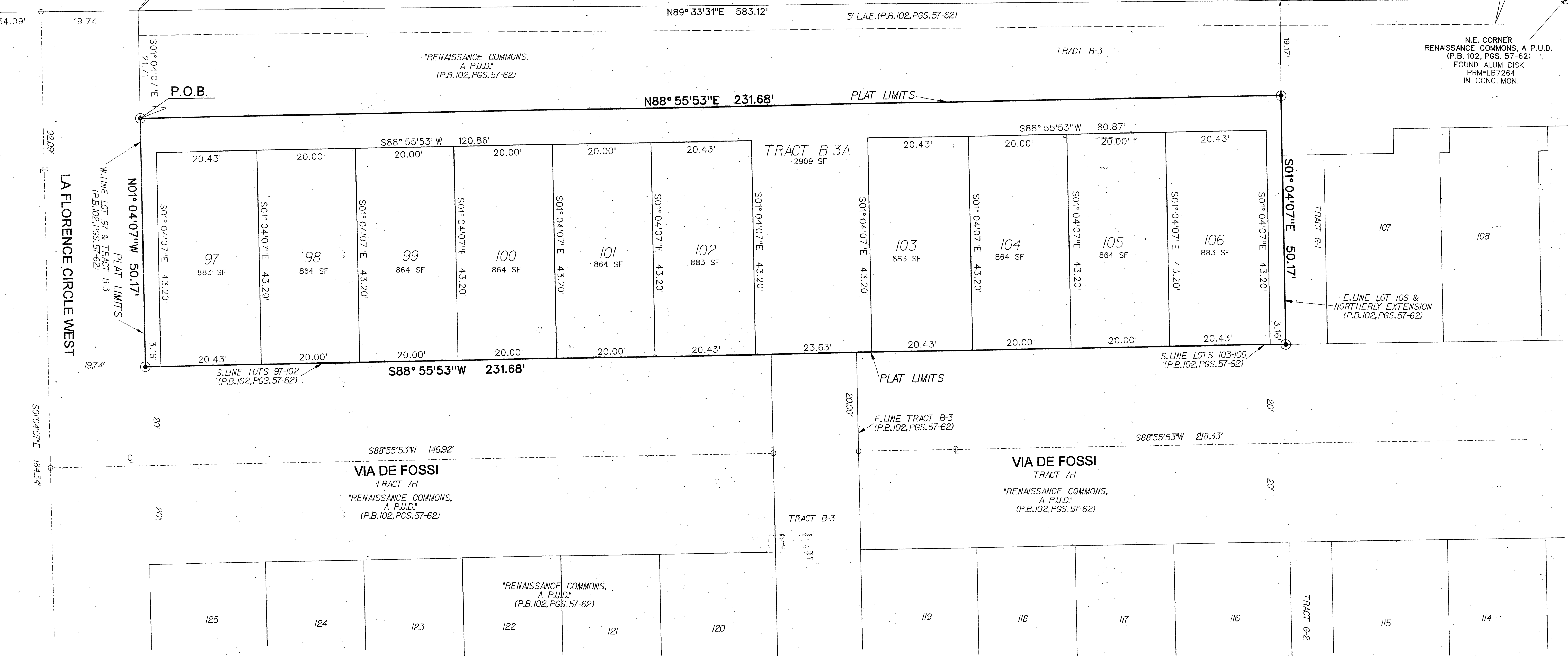
RENAISSANCE DRIVE

TRACT A-4
 "RENAISSANCE COMMONS,
 PLAT TWO, A P.U.D."
 (P.B. 103, PGS. 104-107)
 70' INGRESS-EGRESS EASEMENT
 (O.R.B. 15482 Pg. 627)

P.O.C.

NW CORNER TRACT B-3
 "RENAISSANCE COMMONS, A P.U.D."
 (P.B. 102, PGS. 57-62)

P.O.B.



N.E. CORNER
 "RENAISSANCE COMMONS, A P.U.D."
 (P.B. 102, PGS. 57-62)
 FOUND ALUM. DISK
 PRM *LB7264
 IN CONC. MON.

E. LINE LOT 106 &
 NORTHERLY EXTENSION
 (P.B. 102, PGS. 57-62)

LA FLORENCE CIRCLE WEST

VIA DE FOSSI
 TRACT A-1
 "RENAISSANCE COMMONS,
 A P.U.D."
 (P.B. 102, PGS. 57-62)

VIA DE FOSSI
 TRACT A-1
 "RENAISSANCE COMMONS,
 A P.U.D."
 (P.B. 102, PGS. 57-62)

TRACT B-3A
 2909 SF

TRACT B-3

TRACT G-1

TRACT G-2