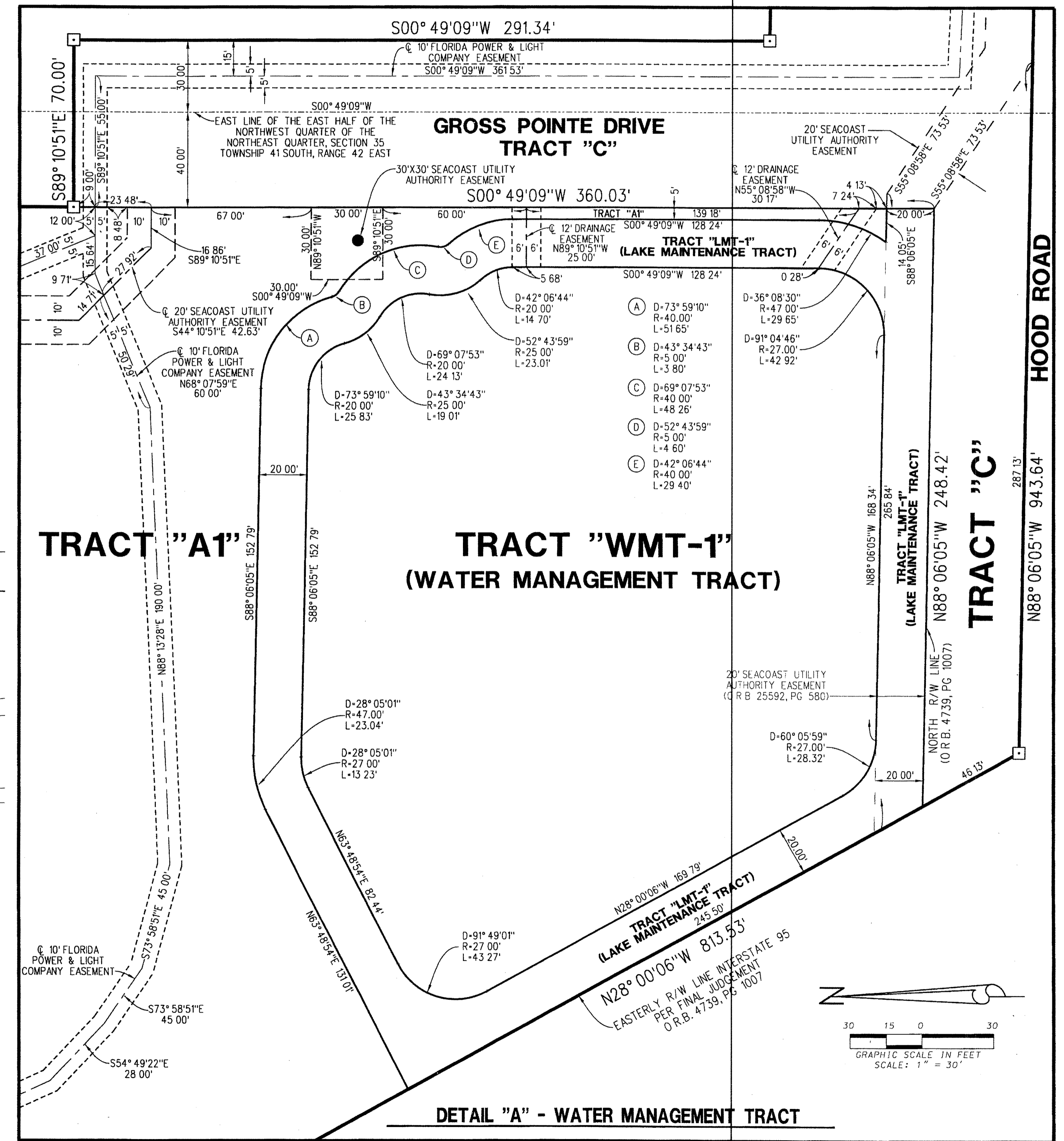
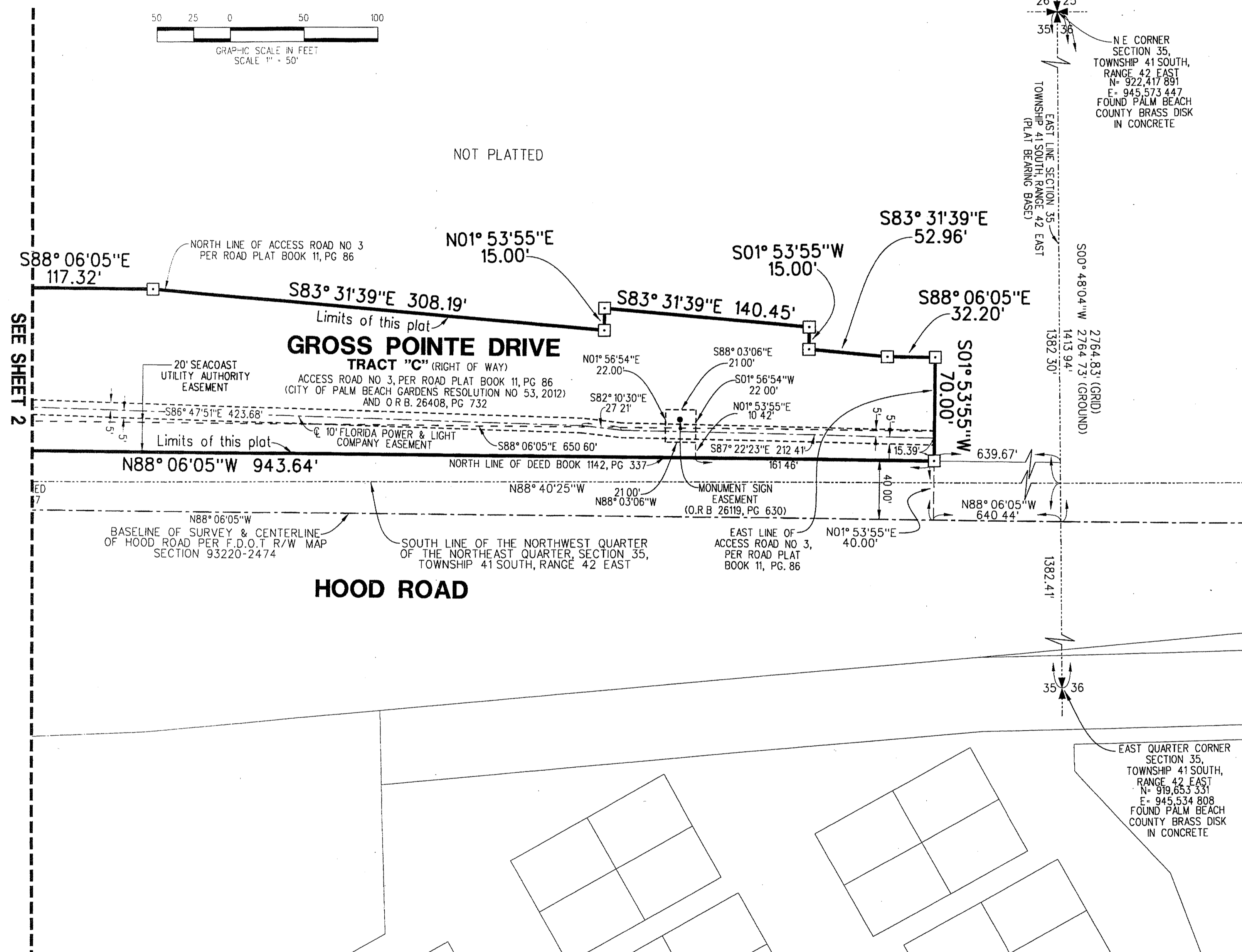
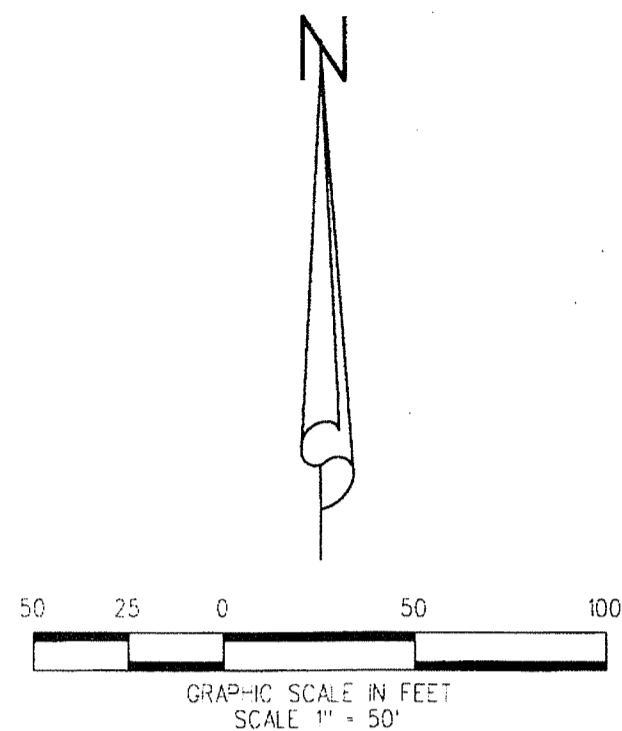
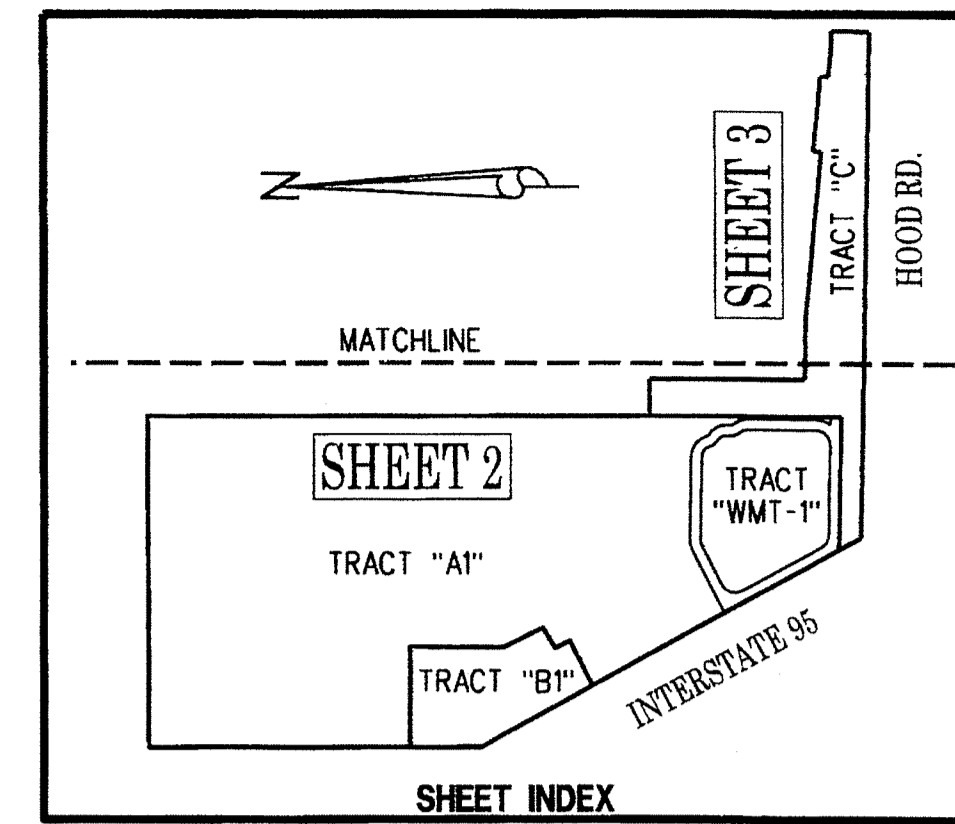


MANDEL JCC - MEYER ACADEMY - REPLAT NO. 1

BEING A REPLAT OF ALL OF MANDEL JCC - MEYER ACADEMY, AS RECORDED IN PLAT BOOK 116, PAGES 126 AND 127, PUBLIC RECORDS OF PALM BEACH COUNTY, FLORIDA, AND A PARCEL OF LAND SITUATE IN SECTION 35, TOWNSHIP 41 SOUTH, RANGE 42 EAST, CITY OF PALM BEACH GARDENS, PALM BEACH COUNTY, FLORIDA

JANUARY 2014 SHEET 3 OF 3

54



ABBREVIATION:

C	= CENTERLINE
Δ	= CURVE'S DELTA ANGLE
R	= CURVE'S RADIUS
L	= CURVE'S ARC LENGTH
D.B.	= DEED BOOK
ELEV.	= ELEVATION
F.D.O.T	= FLORIDA DEPARTMENT OF TRANSPORTATION
L.A.E.	= LIMITED ACCESS EASEMENT
O.R.B.	= OFFICIAL RECORD BOOK
P.B.	= PLAT BOOK
PG.	= PAGE
P.O.B.	= POINT OF BEGINNING
P.O.C.	= POINT OF COMMENCEMENT
P.R.M.	= PERMANENT REFERENCE MONUMENT
P.S.M.	= PROFESSIONAL SURVEYOR AND MAPPER
R/W	= RIGHT OF WAY
S.S.E.	= SAFE SIGHT EASEMENT
U.E.	= UTILITY EASEMENT

LEGEND:

□	= SET 4"x4" CONCRETE MONUMENT STAMPED "PRM LB 4431"
○	= PERMANENT REFERENCE MONUMENT (P.R.M.), UNLESS OTHERWISE NOTED
●	= SET MAG NAIL AND DISK STAMPED "PRM LB 4431"
○	= PERMANENT REFERENCE MONUMENT (P.R.M.), UNLESS OTHERWISE NOTED.

PLAT POSITION AND ORIENTATION

COORDINATE SYSTEM: NATIONAL GEODETIC SURVEY; STATE PLANE TRANSVERSE MERCATOR PROJECTION
 ZONE: FLORIDA EAST
 HORIZONTAL DATUM: NORTH AMERICAN DATUM OF 1983, 1990 ADJUSTMENT (NAD83/90)
 BEARINGS SHOWN HEREON ARE STATE PLANE BEARINGS (GRID) AND ARE REFERENCED TO A BEARING OF SOUTH 00°48'04" WEST ALONG THE EAST LINE OF SECTION 35, TOWNSHIP 41 SOUTH, RANGE 42 EAST
 DISTANCES SHOWN HEREON ARE GROUND DISTANCES, UNLESS OTHERWISE NOTED.
 LINEAR UNITS: U.S. SURVEY FOOT
 SCALE FACTOR: 1.000040237
 GROUND DISTANCE X SCALE FACTOR = GRID DISTANCE

LIDBERG LAND SURVEYING, INC.
 675 West Indiantown Road, Suite 200, Jupiter, Florida 33458 TEL. 561-746-8454

CAD	K\UST	354142 \ 116-126 \ 13-044-306 \ 13-044-306
REF		
FLD		FB PG JOB 13-044-306
OFF	CASASU	DATE JANUARY 2014
CKD	D.C.L	SHEET 3 OF 3 DWG D13-044P