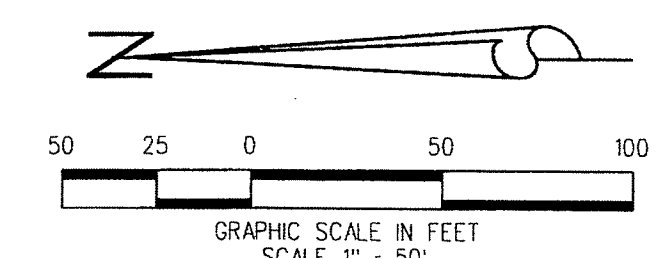


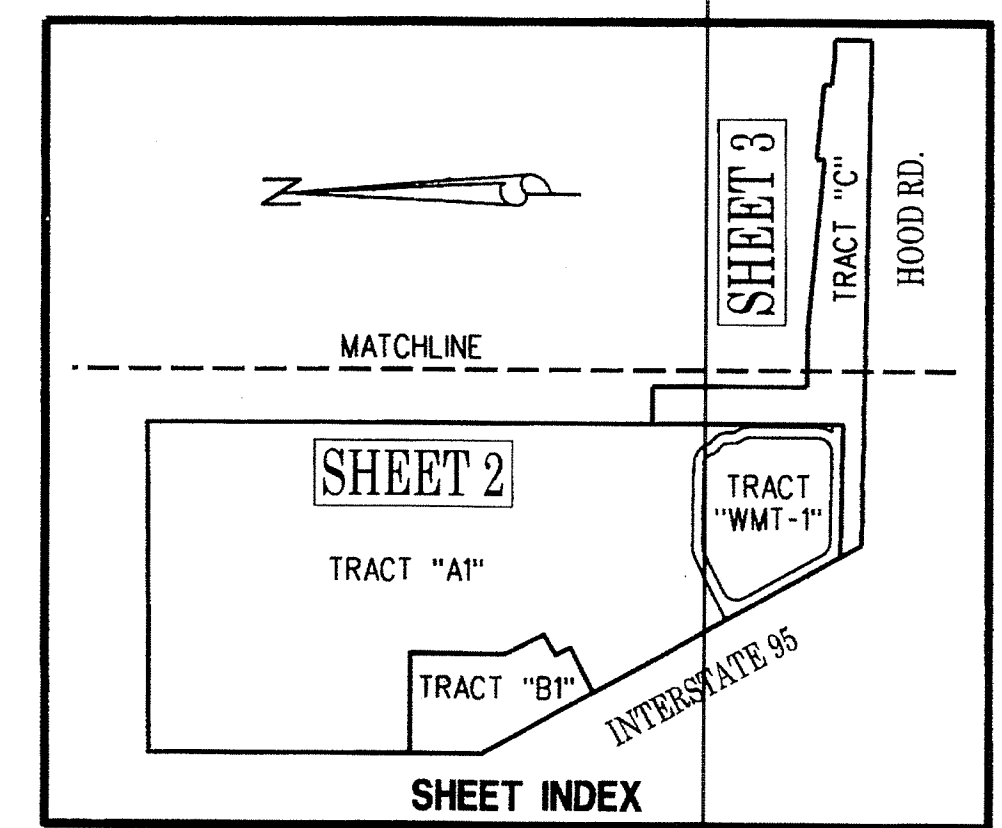
# MANDEL JCC - MEYER ACADEMY - REPLAT NO. 1

BEING A REPLAT OF ALL OF MANDEL JCC - MEYER ACADEMY, AS RECORDED IN PLAT BOOK 116, PAGES 126 AND 127, PUBLIC RECORDS OF PALM BEACH COUNTY, FLORIDA, AND A PARCEL OF LAND SITUATE IN SECTION 35, TOWNSHIP 41 SOUTH, RANGE 42 EAST, CITY OF PALM BEACH GARDENS, PALM BEACH COUNTY, FLORIDA

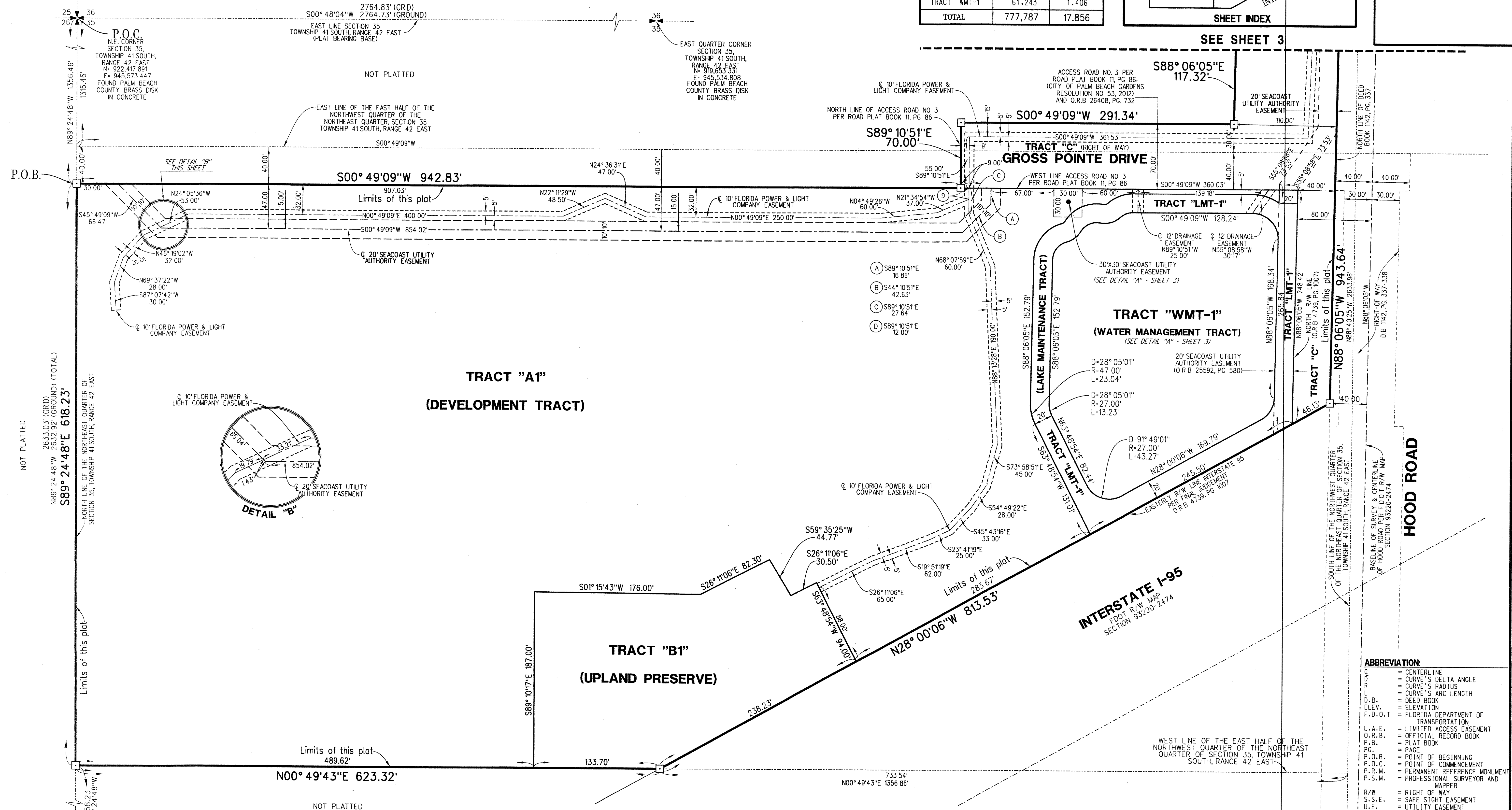
JANUARY 2014 SHEET 2 OF 3



AREA TABULATION		
DESCRIPTION	SQUARE FEET	ACRES
TRACT "A1"	543,315	12.473
TRACT "B1"	52,425	1.204
TRACT "C"	99,683	2.288
TRACT "LMT-1"	21,121	0.485
TRACT "WMT-1"	61,243	1.406
<b>TOTAL</b>	<b>777,787</b>	<b>17.856</b>



55



- LEGEND:**
- = SET 4"x4" CONCRETE MONUMENT STAMPED "PRM LB 4431" - PERMANENT REFERENCE MONUMENT (P.R.M.), UNLESS OTHERWISE NOTED.
  - = SET MAG NAIL AND DISK STAMPED "PRM LB 4431" - PERMANENT REFERENCE MONUMENT (P.R.M.), UNLESS OTHERWISE NOTED.

**ABBREVIATION:**

C.L.	= CENTERLINE
D.A.	= CURVE'S DELTA ANGLE
R.	= CURVE'S RADIUS
L.	= CURVE'S ARC LENGTH
D.B.	= DEED BOOK
ELEV.	= ELEVATION
F.D.O.T.	= FLORIDA DEPARTMENT OF TRANSPORTATION
L.A.E.	= LIMITED ACCESS EASEMENT
O.R.B.	= OFFICIAL RECORD BOOK
P.B.	= PLAT BOOK
P.C.	= PAGE
P.O.B.	= POINT OF BEGINNING
P.O.C.	= POINT OF COMMENCEMENT
P.R.M.	= PERMANENT REFERENCE MONUMENT
P.S.M.	= PROFESSIONAL SURVEYOR AND MAPPER
R/W	= RIGHT OF WAY
S.S.E.	= SAFE SIGHT EASEMENT
U.E.	= UTILITY EASEMENT

**LIDBERG LAND SURVEYING, INC.**  
 675 West Indiantown Road, Suite 200, Jupiter, Florida 33458 TEL. 561-746-8454

CAD	K NUST	354142 \ 116-126 \ 13-044-306 \ 13-044-306
REF		
FLD		
OFF	CASALS	
CKD	D CL	
FB	PG	JOB 13-044-306
		DATE JANUARY 2014
SHEET 2	OF 3	DWG 013-044P