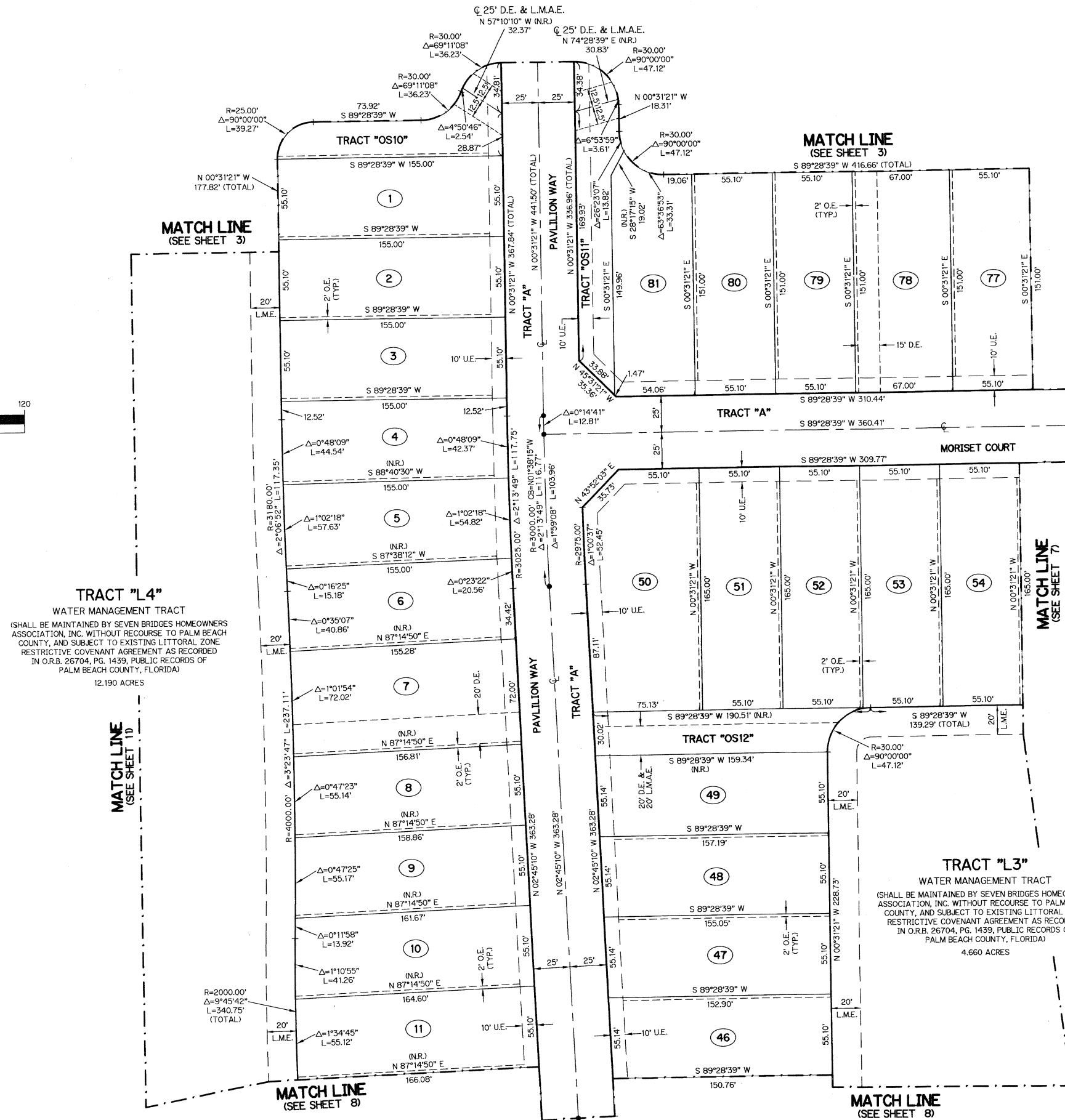
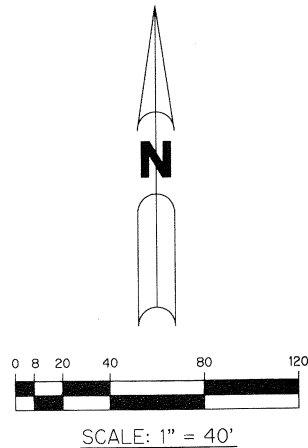


# HYDER AGR-P.U.D. - PLAT ONE

BEING A REPLAT OF ALL OF TRACTS 98 THROUGH 101, INCLUSIVE, AND A PORTION OF TRACTS 91 THROUGH 97, INCLUSIVE, TRACTS 102 THROUGH 105, INCLUSIVE, AND TRACTS 121 THROUGH 128, INCLUSIVE, ACCORDING TO THE PLAT OF PALM BEACH FARMS CO. PLAT NO. 1, AS RECORDED IN PLAT BOOK 2, PAGES 26 THROUGH 28, PUBLIC RECORDS, PALM BEACH COUNTY, FLORIDA, AND LYING WITHIN SECTION 30, TOWNSHIP 46 SOUTH, RANGE 42 EAST, PALM BEACH COUNTY, FLORIDA

THIS INSTRUMENT PREPARED BY  
PERRY C. WHITE, P.S.M. 4213, STATE OF FLORIDA  
SAND & HILLS SURVEYING, INC.  
8461 LAKE WORTH ROAD, SUITE 410  
LAKE WORTH, FLORIDA 33467  
LB-7741

SHEET 6 OF 13

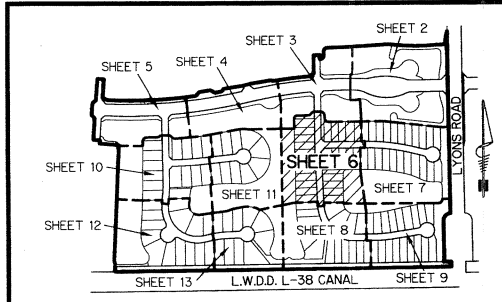


**TRACT "L4"**  
WATER MANAGEMENT TRACT  
(SHALL BE MAINTAINED BY SEVEN BRIDGES HOMEOWNERS ASSOCIATION, INC. WITHOUT RECOURSE TO PALM BEACH COUNTY, AND SUBJECT TO EXISTING LITTORAL ZONE RESTRICTIVE COVENANT AGREEMENT AS RECORDED IN O.R.B. 26704, PG. 1439, PUBLIC RECORDS OF PALM BEACH COUNTY, FLORIDA)  
12.190 ACRES

**TRACT "L3"**  
WATER MANAGEMENT TRACT  
(SHALL BE MAINTAINED BY SEVEN BRIDGES HOMEOWNERS ASSOCIATION, INC. WITHOUT RECOURSE TO PALM BEACH COUNTY, AND SUBJECT TO EXISTING LITTORAL ZONE RESTRICTIVE COVENANT AGREEMENT AS RECORDED IN O.R.B. 26704, PG. 1439, PUBLIC RECORDS OF PALM BEACH COUNTY, FLORIDA)  
4.660 ACRES

- LEGEND:**
- - SET PERMANENT REFERENCE MONUMENT  
4"x4" CONCRETE MONUMENT WITH  
1.5" DISK STAMPED L.B. #7741
  - - FOUND PERMANENT REFERENCE MONUMENT  
4"x4" CONCRETE MONUMENT WITH  
1.5" DISK STAMPED L.B. #7741
  - - SET PERMANENT CONTROL POINT  
NAIL WITH 1.25" DISK STAMPED L.B. #7741
  - - FOUND PERMANENT CONTROL POINT  
NAIL WITH 1.25" DISK STAMPED L.B. #7741
  - AGR - AGRICULTURAL
  - Δ - DELTA ANGLE
  - B.E. - BUFFER EASEMENT
  - CB - CHORD BEARING
  - CH - CHORD DISTANCE
  - CL - CENTERLINE
  - D.B. - DEED BOOK
  - D.E. - DRAINAGE EASEMENT
  - F.P.L. - FLORIDA POWER & LIGHT
  - L - ARC LENGTH
  - L.A.E. - LIMITED ACCESS EASEMENT
  - L.M.A.E. - LAKE MAINTENANCE ACCESS EASEMENT
  - L.M.E. - LAKE MAINTENANCE EASEMENT
  - L.W.D.D. - LAKE WORTH DRAINAGE DISTRICT
  - N.R. - NOT RADIAL
  - N.T.S. - NOT TO SCALE
  - O.R.B. - OFFICIAL RECORD BOOK
  - O.E. - MAINTENANCE & ROOF OVERHANG EASEMENT
  - P.B.C. - PALM BEACH COUNTY
  - P.B.C.U.E. - PALM BEACH COUNTY UTILITY EASEMENT
  - P.B. - PLAT BOOK
  - P.C.E. - PERMANENT CONSTRUCTION EASEMENT
  - P.C.P. - PERMANENT CONTROL POINT
  - PGS. - PAGES
  - P.O.B. - POINT OF BEGINNING
  - P.O.C. - POINT OF COMMENCEMENT
  - P.S.M. - PROFESSIONAL SURVEYOR AND MAPPER
  - P.U.D. - PLANNED UNIT DEVELOPMENT
  - R - RADIUS
  - RAD - RADIAL
  - R/W - RIGHT-OF-WAY
  - R.D. & D. - ROAD, DYKE AND DITCH RESERVATION
  - S.T. - SURVEY TIE
  - U.E. - UTILITY EASEMENT
- N 1000000.0000 - DENOTES STATE PLANE COORDINATES  
E 1000000.0000

**NOTE:**  
COORDINATES SHOWN ARE GRID COORDINATES DATUM = NAD 83 (1990 ADJUSTMENT)  
ZONE = FLORIDA EAST ZONE  
LINEAR UNIT = U.S. SURVEY FEET  
COORDINATE SYSTEM = 1983 STATE PLANE TRANSVERSE MERCATOR PROJECTION  
ALL DISTANCES ARE GROUND  
SCALE FACTOR = 1.00002337  
PLAT BEARING = GRID BEARING  
GROUND DISTANCE X SCALE FACTOR = GRID DISTANCE



**KEY MAP**  
N.T.S.  
SH0178 SHEET 6 OF 13