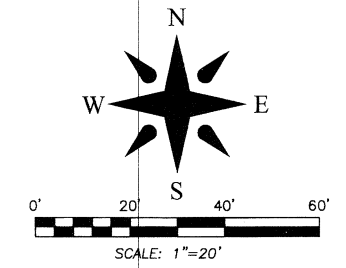
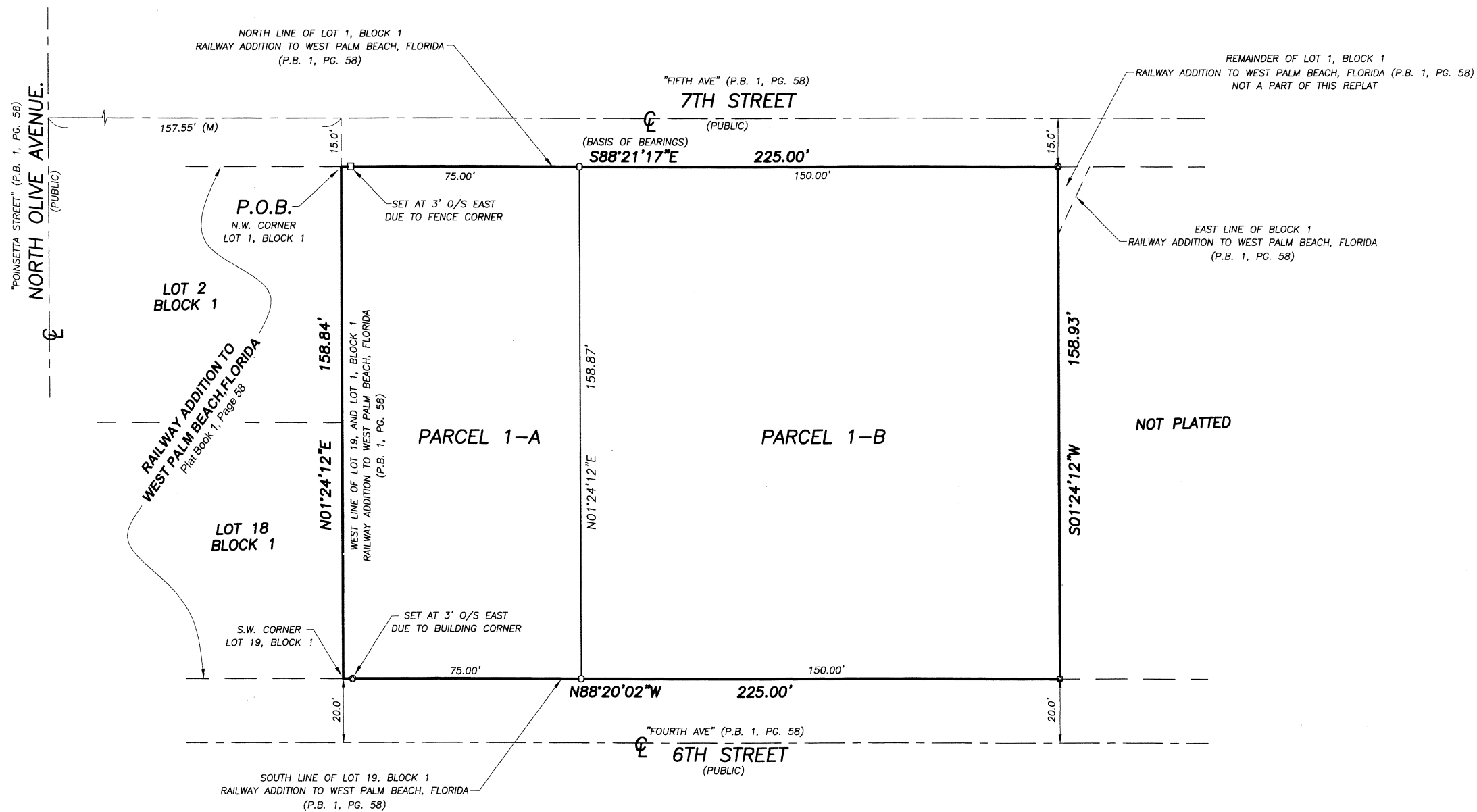


# Railway Addition #1

BEING A PARCEL OF UNPLATTED LAND, TOGETHER WITH A REPLAT OF A PORTION OF LOT 1, BLOCK 1, AND ALL OF LOT 19 BLOCK 1 RAILWAY ADDITION TO WEST PALM BEACH, FLORIDA. ACCORDING TO THE PLAT THEREOF, ON FILE IN THE OFFICE OF THE CLERK OF THE CIRCUIT COURT IN AND FOR PALM BEACH COUNTY, FLORIDA, RECORDED IN PLAT BOOK 1, PAGE 58, LYING IN SECTION 22, TOWNSHIP 43 SOUTH, RANGE 43 EAST, CITY OF WEST PALM BEACH, PALM BEACH COUNTY, FLORIDA.

101  
SHEET 2 OF 2



- ABBREVIATIONS AND SYMBOLS**
- = SET 4"x4" CONCRETE MONUMENT WITH DISK STAMPED "P.R.M. LB 4569"
  - ⊙ = SET MAG NAIL & DISK STAMPED "P.R.M. LB 4569"
  - = SET 5/8" IRON ROD & CAP STAMPED "LB 4569"
  - C/L, ⊕ = CENTERLINE
  - F.K.A. = FORMERLY KNOWN AS
  - R/W = RIGHT OF WAY
  - P.B. = PLAT BOOK
  - PG(S) = PAGE(S)
  - SEC. = SECTION
  - TWP. = TOWNSHIP
  - RGE. = RANGE
  - U.E. = UTILITY EASEMENT
  - D.E. = DRAINAGE EASEMENT
  - D.B. = DEED BOOK
  - O.R.B. = OFFICIAL RECORDS BOOK
  - R.P.B. = ROAD PLAT BOOK
  - L.A.E. = LIMITED ACCESS EASEMENT
  - P.O.B. = POINT OF BEGINNING
  - P.O.C. = POINT OF COMMENCEMENT
  - P.B.C. = PALM BEACH COUNTY
  - P.R.M. = PERMANENT REFERENCE MONUMENT

PLAT OF:  
**Railway Addition #1**

**WALLACE SURVEYING**  
CORP. LICENSED BUSINESS # 4589  
2553 VILLAGE BOULEVARD, WEST PALM BEACH, FLORIDA 33407 • (561) 640-4591

FIELD: J.P./C.K.	JOB NO.: 13-1246.6	F.R. PG.
OFFICE: J.P.	DATE: APRIL 2014	DWG. NO. 13-1246-8
CVD:	REF: 13-1246.DWG	SHEET 2 OF 2