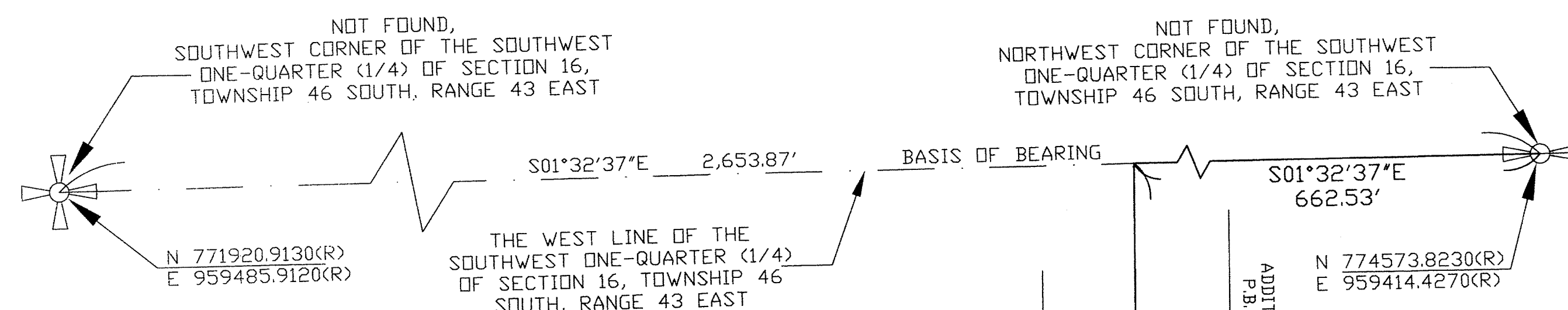
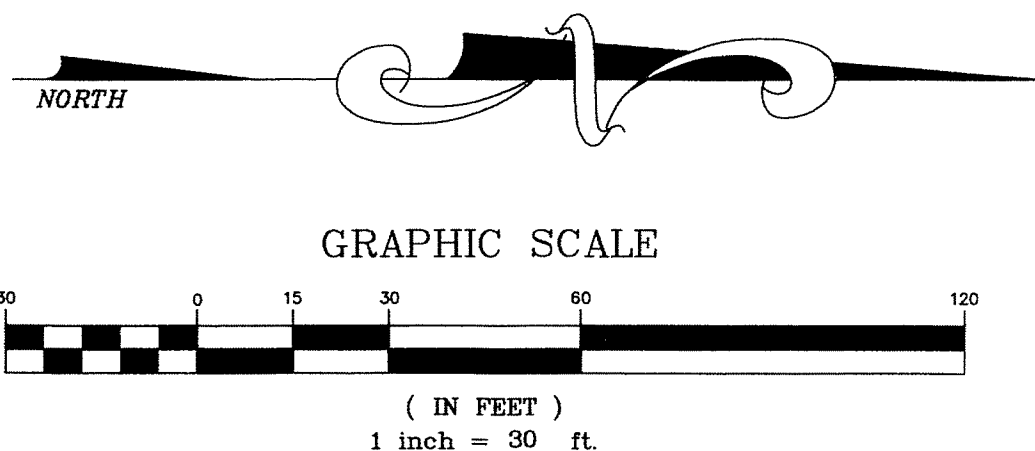
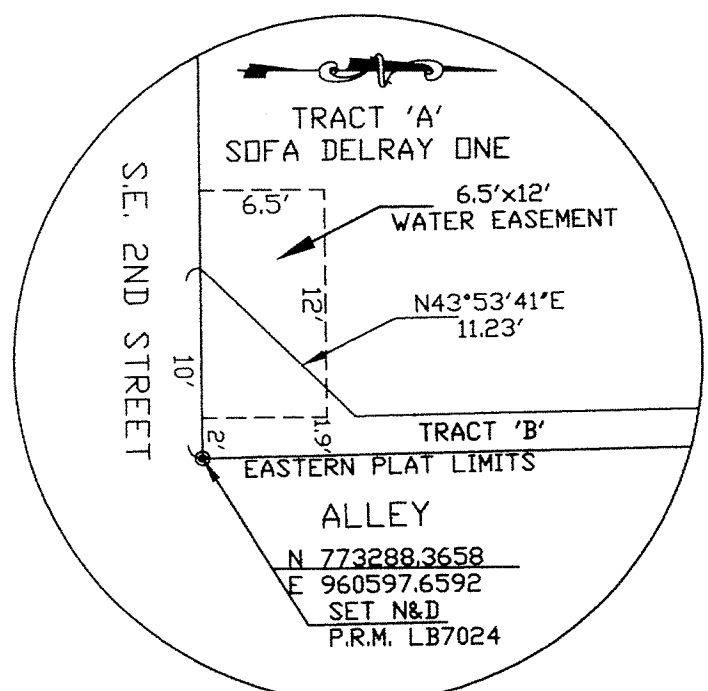


# SOFA DELRAY ONE

103

A REPLAT OF LOTS 1, 2, 3, 4 AND THE NORTH 5.2 FEET OF LOT 5, BLOCK 94, TOWN OF LINTON (NOW DELRAY BEACH) (P.B. 1, PG. 3, P.B.C.R.), TOGETHER WITH LOT 5, LESS THE NORTH 5.20 FEET THEREOF, TOGETHER WITH LOTS 6 AND 7, LESS THE SOUTH 37.40 FEET THEREOF, BLOCK 94, TOWN OF LINTON (NOW DELRAY BEACH) (P.B. 1, PG. 3, P.B.C.R.), LESS A 5.00 FOOT STRIP OF RIGHT-OF-WAY LYING ALONG THE WEST LINE OF LOTS 5, 6 & 7, LESS THE NORTH 5.20 FEET OF LOT 5 AND THE SOUTH 37.40 FEET OF LOT 7 THEREOF, BLOCK 94, TOWN OF LINTON (NOW DELRAY BEACH) (P.B. 1, PG. 3, P.B.C.R.), TOGETHER WITH LOTS 8, 9, 10, AND THE SOUTH 37.40 FEET OF LOT 7 THEREOF, BLOCK 94, TOWN OF LINTON (NOW DELRAY BEACH) (P.B. 1, PG. 3, P.B.C.R.) LYING IN THE SOUTHWEST ONE-QUARTER OF SECTION 16, TOWNSHIP 46 SOUTH, RANGE 43 EAST CITY OF DELRAY BEACH, PALM BEACH COUNTY, FLORIDA.

STATE OF FLORIDA  
COUNTY OF PALM BEACH  
THIS PLAT WAS FILED FOR RECORD  
AT \_\_\_\_\_ THIS \_\_\_\_\_ DAY OF \_\_\_\_\_ 20\_\_\_\_ AND DULY RECORDED IN PLAT BOOK \_\_\_\_\_ ON PAGES \_\_\_\_\_ AND \_\_\_\_\_  
SHARON R. BOCK,  
CLERK AND COMPTROLLER  
BY: \_\_\_\_\_ DC

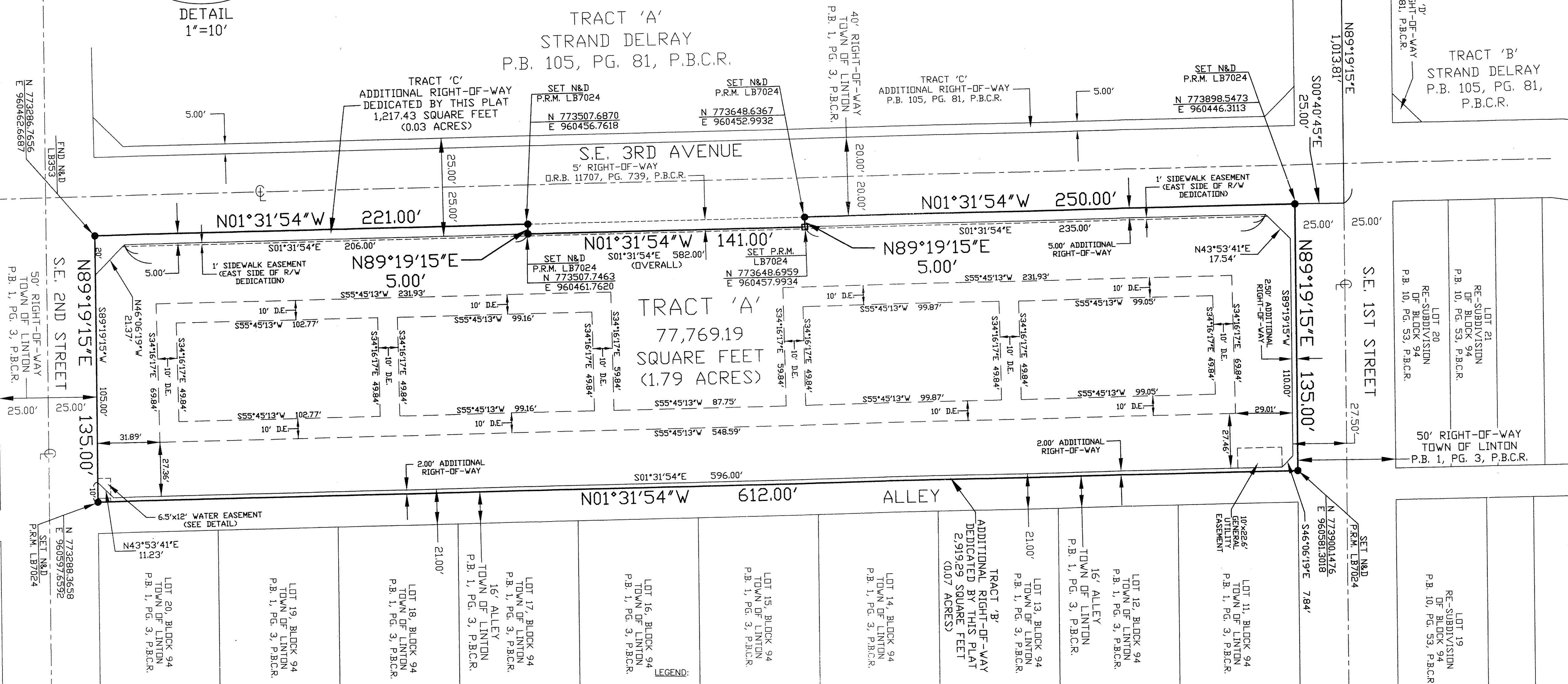


LOT 3, BLOCK 87  
LINN'S ADDITION TO  
OSCEOLA PARK  
P.B. 1, PG. 133, P.B.C.R.

LOT 4, BLOCK 87  
LINN'S ADDITION TO  
OSCEOLA PARK  
P.B. 1, PG. 133, P.B.C.R.

LOT 1, BLOCK 95  
LINN'S ADDITION TO  
OSCEOLA PARK  
P.B. 1, PG. 133, P.B.C.R.

LOT 13, BLOCK 95  
LINN'S ADDITION TO  
OSCEOLA PARK  
P.B. 1, PG. 133, P.B.C.R.



- LEGEND:**
- O.R.B. - OFFICIAL RECORDS BOOK
  - P.B. - PLAT BOOK
  - PG. - PAGE
  - P.B.C.R. - PALM BEACH COUNTY RECORDS
  - P.R.M. - PERMANENT REFERENCE MONUMENT
  - FND - FOUND
  - N&D - NAIL AND DISC
  - D.E. - DRAINAGE EASEMENT
  - G.U.E. - GENERAL UTILITY EASEMENT
  - PER RECORD - PER RECORD
  - CL - CENTERLINE
  - SET PRM ALUMINUM DISC, STAMPED LB7024, IN 4" SQUARE CONCRETE WITH 5/8" REBAR, 24" IN LENGTH. (P.R.M.)
  - SET PRM ALUMINUM DISC, STAMPED LB7024
  - NORTHING & EASTING STATE PLANE COORDINATES

TRACT	SQUARE FEET	ACREAGE
TRACT 'A'	77,769.19	1.78
TRACT 'B'	2,919.29	0.07
TRACT 'C'	1,217.43	0.03
TOTAL	81,905.91	1.88