

THIS INSTRUMENT PREPARED BY:
PILLAR CONSULTANTS, INC.
*Consulting Engineers, Planners, Surveyors,
 Construction Management, General Contracting*
 5230 S. University Drive - Suite 104
 Davie, Florida 33328
 JOB #12010B
 JUNE, 2013

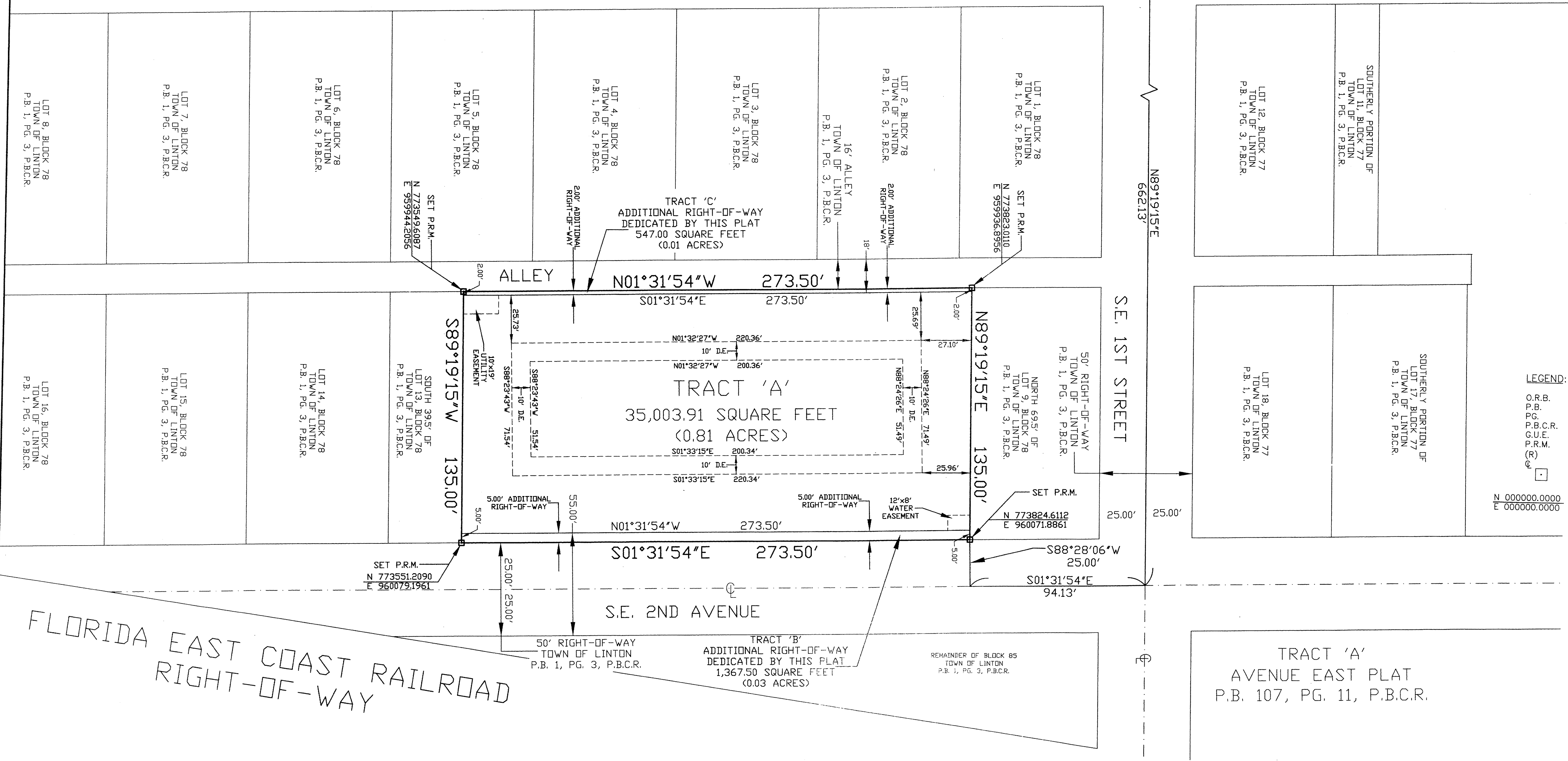
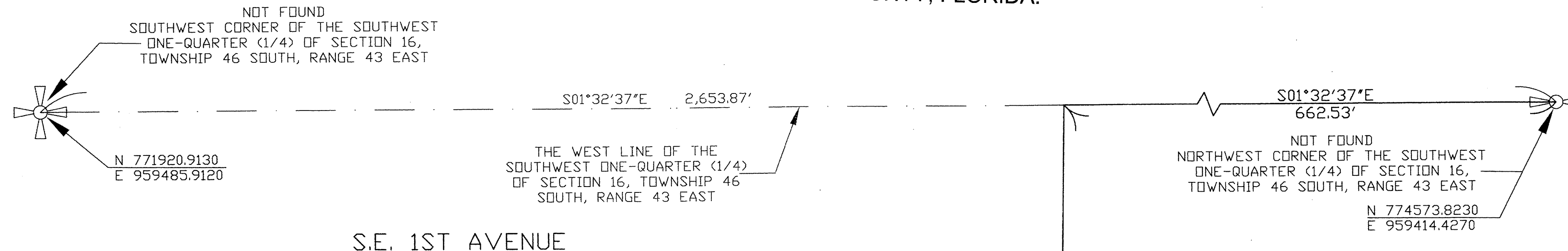
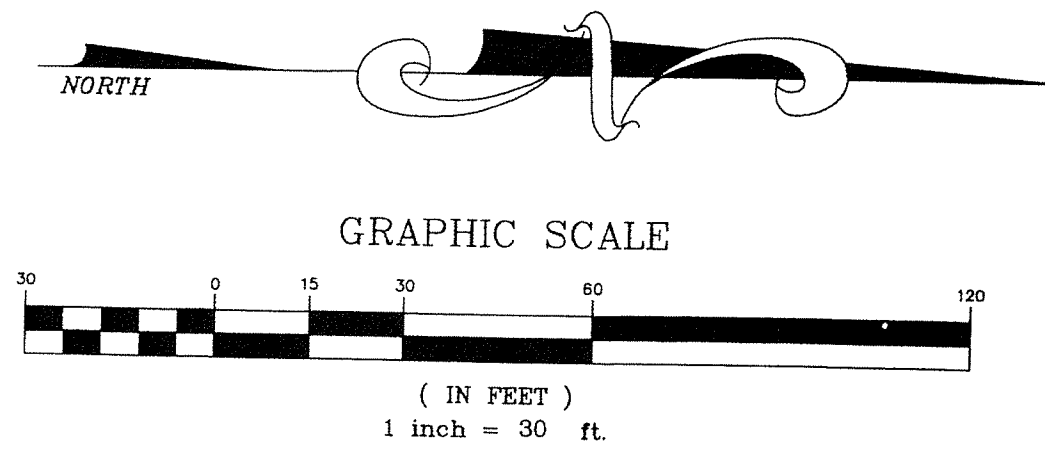
SOFA DELRAY TWO

SHEET 2 OF 2 SHEETS

105

A REPLAT OF THE SOUTH 7.0 FEET OF LOT 9, LOT 10 AND THE NORTH 53 FEET OF LOT 11, BLOCK 78, TOWN OF LINTON (NOW DELRAY BEACH) (P.B. 1, PG. 3, P.B.C.R.), TOGETHER WITH THE SOUTH 23.5 FEET OF LOT 11, AND LOT 12, LESS THE SOUTH 23.5 FEET THEREOF, BLOCK 78, TOWN OF LINTON (NOW DELRAY BEACH) (P.B. 1, PG. 3, P.B.C.R.), TOGETHER WITH THE SOUTH 23.5 FEET OF LOT 12, AND THE NORTH 37.0 FEET OF LOT 13, BLOCK 78, TOWN OF LINTON (NOW DELRAY BEACH) (P.B. 1, PG. 3, P.B.C.R.), LYING IN THE SOUTHWEST ONE-QUARTER OF SECTION 16, TOWNSHIP 46 SOUTH, RANGE 43 EAST, CITY OF DELRAY BEACH, PALM BEACH COUNTY, FLORIDA.

STATE OF FLORIDA
 COUNTY OF PALM BEACH
 THIS PLAT WAS FILED FOR RECORD
 AT _____ THIS
 _____ DAY OF _____
 20____, AND DULY RECORDED IN
 PLAT BOOK _____ ON PAGES
 _____ AND _____
 SHARON R. BOCK,
 CLERK AND COMPTROLLER
 BY: _____ DC



- LEGEND:**
- O.R.B. - OFFICIAL RECORD BOOK
 - P.B. - PLAT BOOK
 - PG. - PAGE
 - P.B.C.R. - PALM BEACH COUNTY RECORDS
 - G.U.E. - GENERAL UTILITY EASEMENT
 - P.R.M. - PERMANENT REFERENCE MONUMENT
 - (R) - CENTERLINE
 - ⊕ - SET PRM ALUMINUM DISC, STAMPED LB7024, IN 4" SQUARE CONCRETE WITH 5/8" REBAR, 24" IN LENGTH, (P.R.M.)
 - ⊙ - NORTHING & EASTING STATE PLANE COORDINATES

| TRACT | AREA TABLE | |
|-----------|-------------|---------|
| | SQUARE FEET | ACREAGE |
| TRACT 'A' | 35,003.91 | 0.81 |
| TRACT 'B' | 1,367.50 | 0.03 |
| TRACT 'C' | 547.00 | 0.01 |
| TOTAL | 36,918.41 | 0.85 |