

ENTERPRISE LEASING

A PORTION OF SECTION 29,
TOWNSHIP 43 SOUTH, RANGE 43 EAST,
PALM BEACH COUNTY, FLORIDA.

119

State of Florida }
County of Palm Beach } SS

THIS PLAT WAS FILED FOR
RECORD AT _____ M.

THIS _____ DAY OF _____
A.D. 2014 AND DULY RECORDED

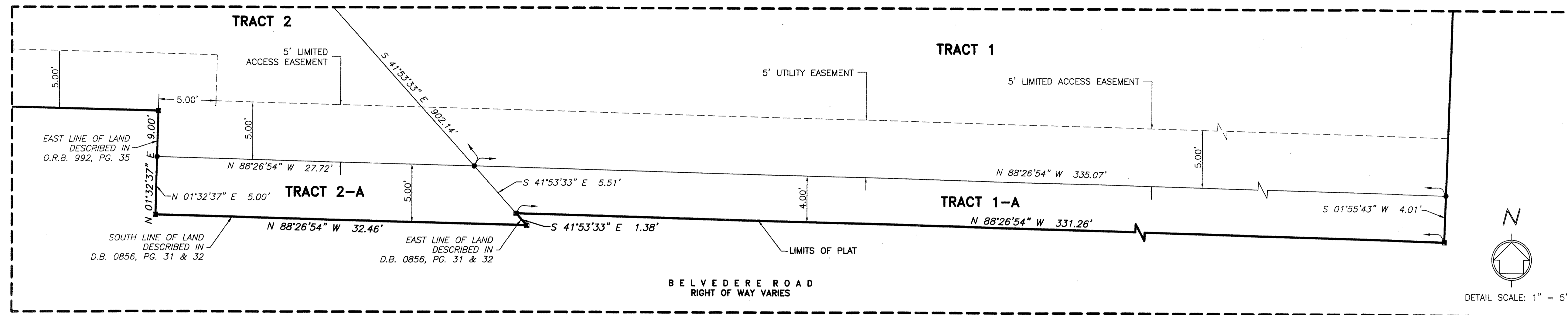
IN PLAT BOOK _____ THROUGH _____
PAGES _____ THROUGH _____

SHARON R. BOCK
CLERK AND COMPTROLLER

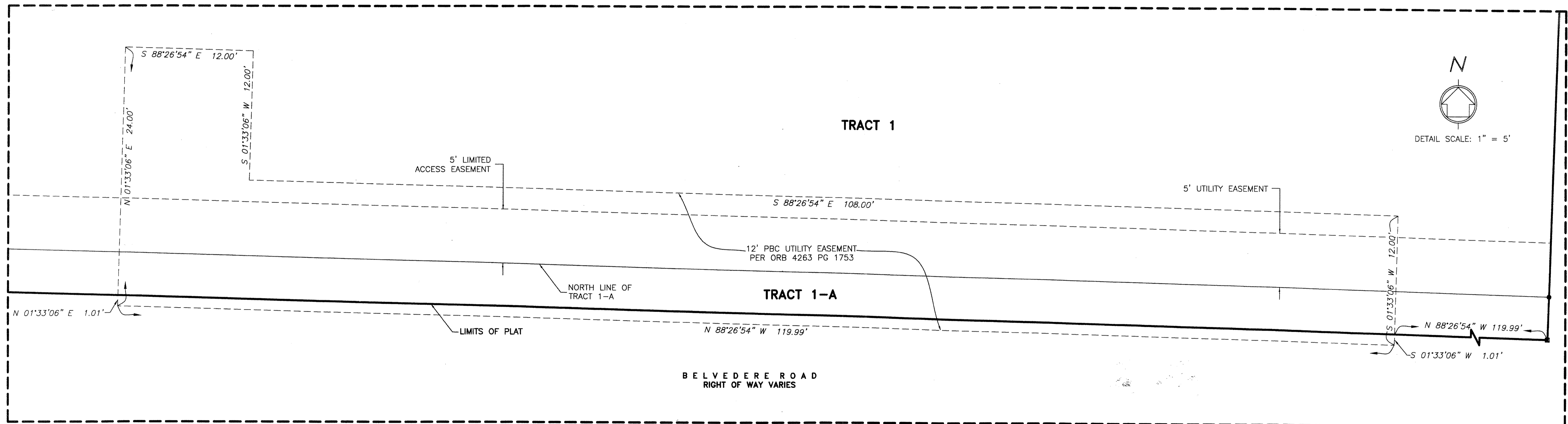
BY: _____
DEPUTY CLERK

SHEET 3 OF 3 SHEETS

DETAIL 3A



DETAIL 3B



WGI
Wantman Group, Inc.

Engineering ♦ Planning ♦ Surveying ♦ Environmental
 2035 VISTA PARKWAY, SUITE 100, WEST PALM BEACH, FL 33411
 (866) 909-2220 phone (561) 687-1110 fax
 CERTIFICATE OF AUTHORIZATION No. LB 7055
 ORLANDO - PORT ST. LUCIE - TAMPA
 THIS INSTRUMENT WAS PREPARED BY ERIC R. MATTHEWS, P.S.M.
 PROFESSIONAL SURVEYOR AND MAPPER, LICENSE NO. 6717
 FOR THE FIRM: WANTMAN GROUP, INC.