

VILLAGE SQUARE AT DELRAY BEACH

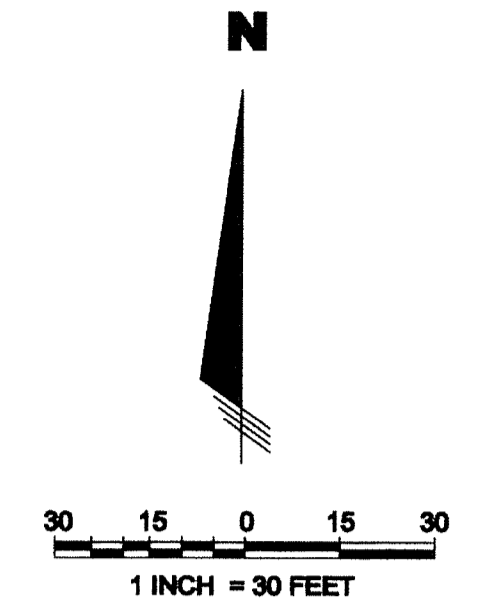
A REPLAT OF TRACT "B", A LIGHT INDUSTRIAL DEVELOPMENT FOR FRANZ / DELK / KINNAIRD
 PLAT BOOK 63, PAGE 93

AND
 A REPLAT OF A PORTION OF
 LOT 19 AND LOT 27,

A SUBDIVISION OF SECTION 20, TOWNSHIP 46 SOUTH, RANGE 43 EAST
 PLAT BOOK 1, PAGE 4 ALL OF THE PUBLIC RECORDS OF PALM BEACH COUNTY, FLORIDA
 BEING IN SECTION 20, TOWNSHIP 46 SOUTH, RANGE 43 EAST,
 CITY OF DELRAY BEACH, PALM BEACH COUNTY, FLORIDA

AREA TABULATION

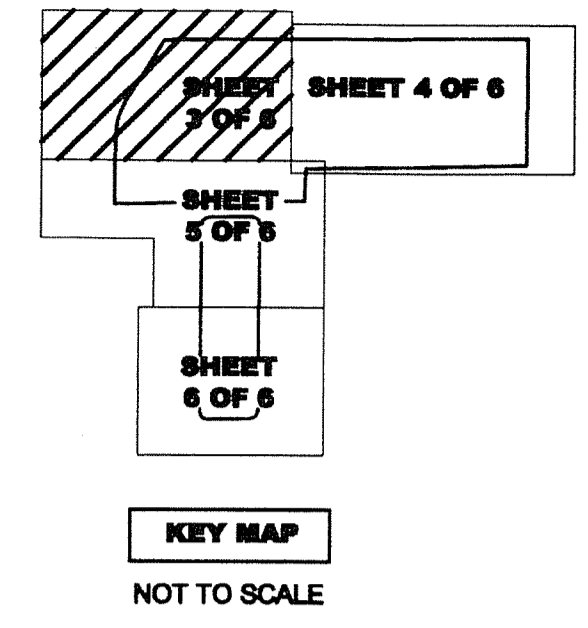
TRACT A-1	AREA =	80,194 S.F.
TRACT A-2	AREA =	10,217 S.F.
TRACT B-1	AREA =	14,307 S.F.
TRACT B-2	AREA =	6,702 S.F.
TRACT B-3	AREA =	6,295 S.F.
TRACT C-1	AREA =	22,414 S.F.
TRACT C-2	AREA =	22,119 S.F.
TRACT C-3	AREA =	47,701 S.F.
TRACT C-4	AREA =	86,432 S.F.
TRACT C-5	AREA =	16,473 S.F.
TRACT D-1	AREA =	124,864 S.F.
TRACT D-2	AREA =	48,915 S.F.
TRACT D-3	AREA =	33,374 S.F.
TRACT L-1	AREA =	13,963 S.F.
TRACT L-2	AREA =	26,688 S.F.
TRACT L-3	AREA =	42,843 S.F.
TRACT L-4	AREA =	12,901 S.F.
TRACT R-1	AREA =	48,891 S.F.



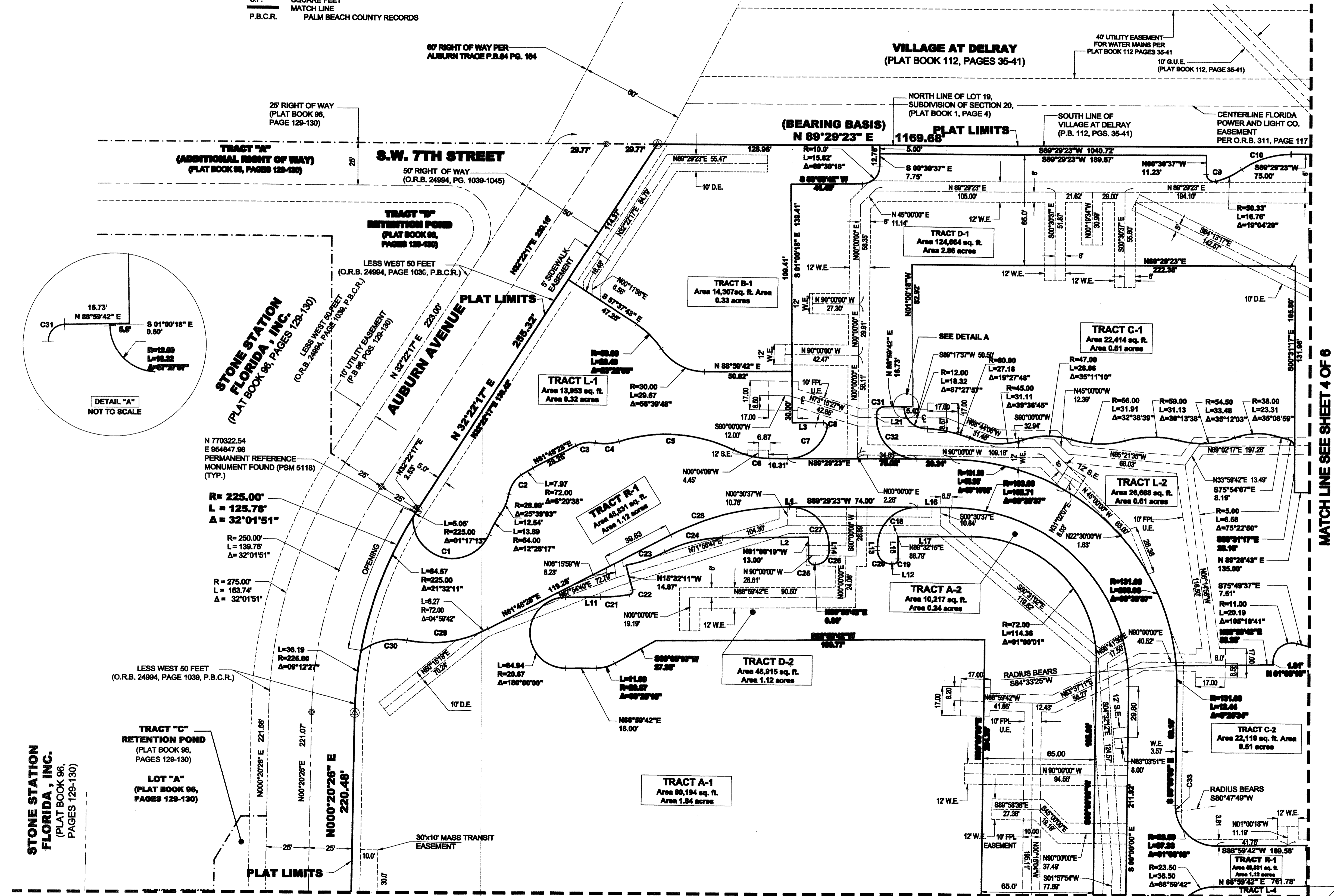
124

STATE OF FLORIDA
 COUNTY OF PALM BEACH
 THIS PLAT WAS FILED FOR
 RECORD AT _____ M.
 THIS _____ DAY OF _____
 A.D. 2011 AND DULY RECORDED
 IN PLAT BOOK _____ ON
 PAGES _____ THRU _____
 SHARON R. BOCK
 CLERK AND COMPTROLLER

BY: _____
 DEPUTY CLERK



- LEGEND:**
- P.B. PLAT BOOK
 - P.O.B. POINT OF BEGINNING
 - PG. PAGE
 - O.R.B. OFFICIAL RECORD BOOK
 - H.W.S. HELLER-WEAVER AND SHEREMETA
 - S.F. SQUARE FEET
 - R. RADIUS OF CURVE
 - L. LENGTH OF CURVE
 - Δ. DELTA ANGLE OF CURVE
 - C1 REFER TO CURVE TABLE
 - F.P.L. FLORIDA POWER AND LIGHT CO.
 - U.E. UTILITY EASEMENT
 - S.E. SEWER EASEMENT
 - D.E. DRAINAGE EASEMENT
 - W.E. WATER EASEMENT
 - G.U.E. GENERAL UTILITY EASEMENT
 - S.F. SQUARE FEET
 - MATCH LINE
 - P.B.C.R. PALM BEACH COUNTY RECORDS



CURVE TABLE

CURVE	LENGTH	RADIUS	DELTA
C1	64.22	23.00	159°58'14"
C2	13.77	17.00	48°23'38"
C3	11.33	17.00	38°10'22"
C4	13.98	28.00	28°37'04"
C5	68.48	88.00	44°05'23"
C6	21.75	48.00	25°57'46"
C7	31.62	23.50	77°05'58"
C8	4.20	2.33	103°23'43"
C9	7.96	4.33	105°45'19"
C10	30.50	50.17	34°48'47"
C19	4.71	3.00	90°00'00"
C20	12.57	8.00	90°00'00"
C21	17.01	99.33	9°48'38"
C22	3.85	2.33	94°43'14"
C23	24.26	82.00	16°57'02"
C24	34.60	72.00	27°31'48"
C25	4.71	3.00	90°00'00"
C26	12.71	8.00	91°00'01"
C27	35.93	23.00	89°30'19"
C28	71.51	148.00	27°40'55"
C29	48.55	72.00	38°38'07"
C30	28.45	33.00	49°23'20"
C31	6.80	4.33	90°00'01"
C32	36.73	23.50	89°33'25"
C33	3.77	23.50	09°12'11"

LINE TABLE

LINE	LENGTH	BEARING
L1	0.34	N89°29'23"E
L2	49.86	N88°59'42"E
L3	18.04	N88°59'42"E
L4	11.23	N00°30'37"W
L5	12.53	S00°30'37"E
L6	11.20	N00°30'37"W
L7	10.79	N88°43'12"W
L8	13.42	S89°43'12"E
L9	15.08	S61°33'14"E
L10	26.05	N88°59'42"E
L11	20.24	N88°59'42"E
L12	1.00	N88°59'41"E
L13	2.36	N01°00'19"W
L14	3.02	N01°00'19"W
L15	13.00	N01°00'19"W
L16	20.15	S89°29'23"W
L17	42.71	N88°59'41"E
L18	14.43	N89°43'12"E
L19	5.53	N89°43'12"E
L20	13.42	S89°43'12"E
L21	2.74	N01°00'16"W

THIS INSTRUMENT WAS PREPARED BY
 DAVID P. LINDLEY, PLS
 OF
CAULFIELD and WHEELER, INC.
 ENGINEERS - PLANNERS - SURVEYORS
 7900 GLADES ROAD, SUITE 100
 BOCA RATON, FLORIDA 33434 - (561)392-1991
 AUGUST - 2013

**STONE STATION
 FLORIDA, INC.**
 (PLAT BOOK 96,
 PAGES 129-130)

**STONE STATION
 FLORIDA, INC.**
 (PLAT BOOK 96,
 PAGES 129-130)

**TRACT "C"
 RETENTION POND**
 (PLAT BOOK 96,
 PAGES 129-130)

**LOT "A"
 (PLAT BOOK 96,
 PAGES 129-130)**

MATCH LINE SEE SHEET 5 OF 6

MATCH LINE SEE SHEET 4 OF 6