

STATE OF FLORIDA  
COUNTY OF PALM BEACH  
THIS PLAT WAS FILED FOR  
RECORD AT \_\_\_\_\_ M.  
THIS \_\_\_\_\_ DAY OF  
A.D. 2011 AND DULY RECORDED  
IN PLAT BOOK \_\_\_\_\_ ON  
PAGES \_\_\_\_\_ THRU \_\_\_\_\_  
SHARON R. BOCK  
CLERK AND COMPTROLLER  
BY: \_\_\_\_\_  
DEPUTY CLERK

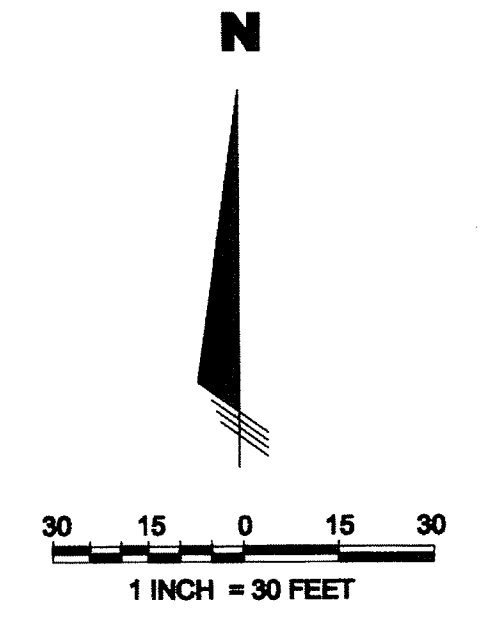
# VILLAGE SQUARE AT DELRAY BEACH

A REPLAT OF TRACT "B", A LIGHT INDUSTRIAL DEVELOPMENT FOR FRANZ / DELK / KINNAIRD  
PLAT BOOK 63, PAGE 93

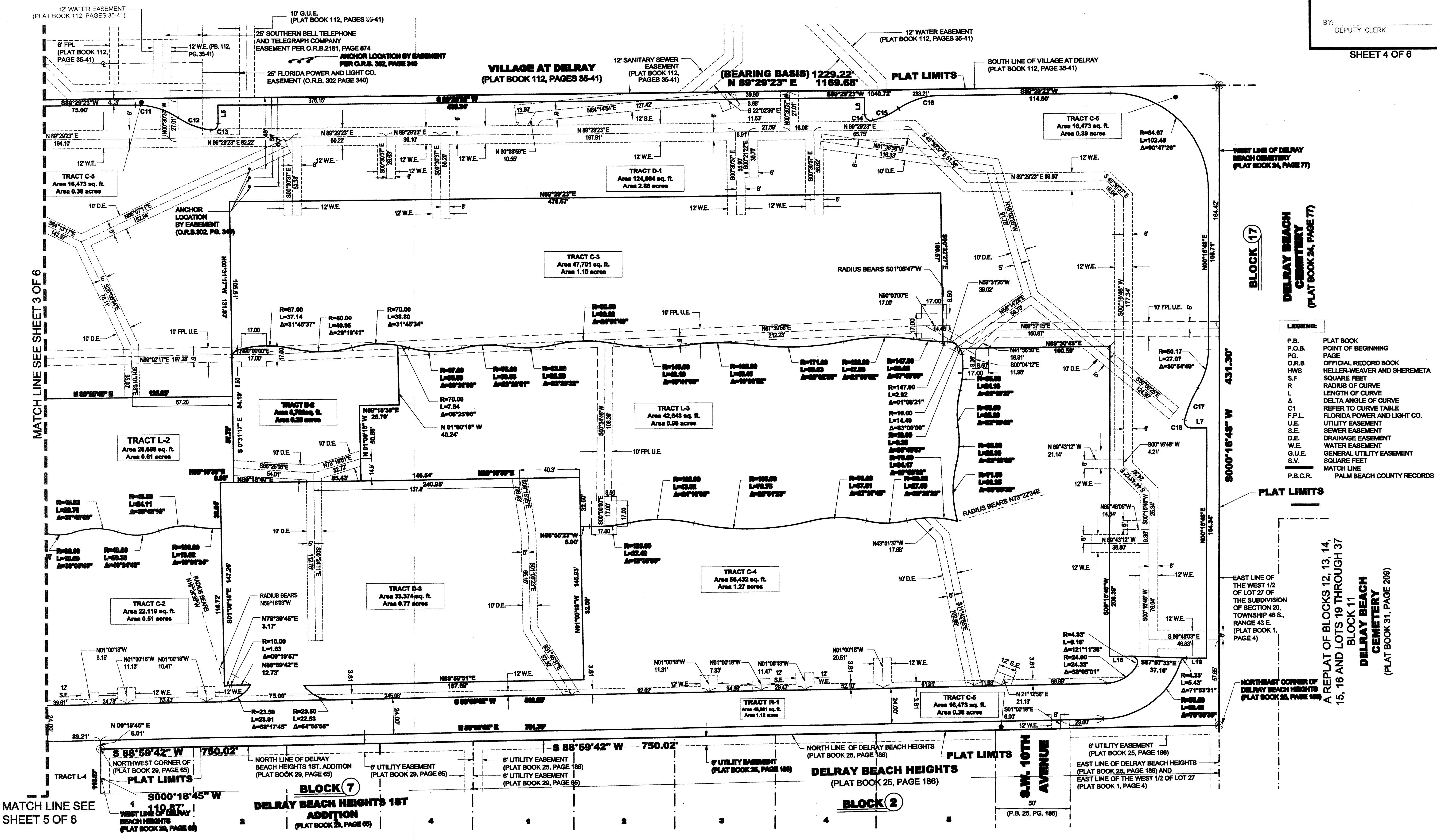
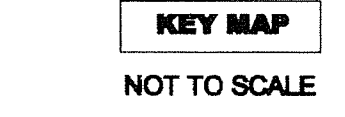
AND  
A REPLAT OF A PORTION OF  
LOT 19 AND LOT 27,

A SUBDIVISION OF SECTION 20, TOWNSHIP 46 SOUTH, RANGE 43 EAST  
PLAT BOOK 1, PAGE 4 ALL OF THE PUBLIC RECORDS OF PALM BEACH COUNTY, FLORIDA  
BEING IN SECTION 20, TOWNSHIP 46 SOUTH, RANGE 43 EAST,  
CITY OF DELRAY BEACH, PALM BEACH COUNTY, FLORIDA

THIS INSTRUMENT WAS PREPARED BY  
DAVID P. LINDLEY, PLS  
OF  
**CAULFIELD and WHEELER, INC.**  
ENGINEERS - PLANNERS - SURVEYORS  
7900 GLADES ROAD, SUITE 100  
BOCA RATON, FLORIDA 33434 - (561)392-1991  
AUGUST - 2013



CURVE TABLE				LINE TABLE		
CURVE	LENGTH	RADIUS	DELTA	LINE	LENGTH	BEARING
C11	30.50	50.17	34°49'41"	L5	12.53	S00°30'37"E
C12	23.70	50.33	26°58'30"	L6	11.20	N00°30'37"W
C13	7.40	4.33	07°51'13"	L7	10.79	N89°43'12"W
C14	7.85	4.33	103°53'31"	L8	14.43	N89°43'12"E
C15	19.10	55.33	19°46'41"	L9	13.42	S89°43'12"E
C16	29.48	50.17	33°40'19"			
C17	23.48	79.32	16°57'48"			
C18	7.86	4.33	103°57'38"			



MATCH LINE SEE SHEET 5 OF 6

NORTHWEST CORNER OF DELRAY BEACH HEIGHTS (PLAT BOOK 28, PAGE 85)

**BLOCK 7**  
NORTH LINE OF DELRAY BEACH HEIGHTS 1ST ADDITION (PLAT BOOK 28, PAGE 85)

**BLOCK 2**  
NORTH LINE OF DELRAY BEACH HEIGHTS (PLAT BOOK 25, PAGE 186)

**S.W. 10TH AVENUE**  
50'  
(P.B. 25, PG. 186)

**BLOCK 11**  
A REPLAT OF BLOCKS 12, 13, 14, 15, 16 AND LOTS 19 THROUGH 37 DELRAY BEACH CEMETERY (PLAT BOOK 31, PAGE 209)

**BLOCK 17**  
DELRAY BEACH CEMETERY (PLAT BOOK 24, PAGE 77)

**BLOCK 17**  
WEST LINE OF DELRAY BEACH CEMETERY (PLAT BOOK 24, PAGE 77)

**PLAT LIMITS**  
SOUTH LINE OF VILLAGE AT DELRAY (PLAT BOOK 112, PAGE 35-41)

**PLAT LIMITS**  
NORTH LINE OF VILLAGE AT DELRAY (PLAT BOOK 112, PAGE 35-41)

**PLAT LIMITS**  
EAST LINE OF THE WEST 1/2 OF LOT 27 OF THE SUBDIVISION OF SECTION 20, TOWNSHIP 46 S., RANGE 43 E. (PLAT BOOK 1, PAGE 4)

**PLAT LIMITS**  
NORTHEAST CORNER OF DELRAY BEACH HEIGHTS (PLAT BOOK 25, PAGE 186)