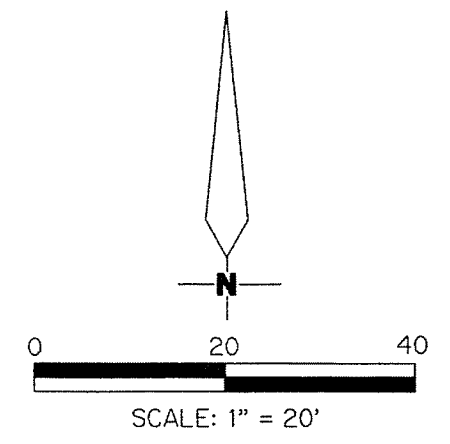


# OKEECHOBEE STEAKHOUSE

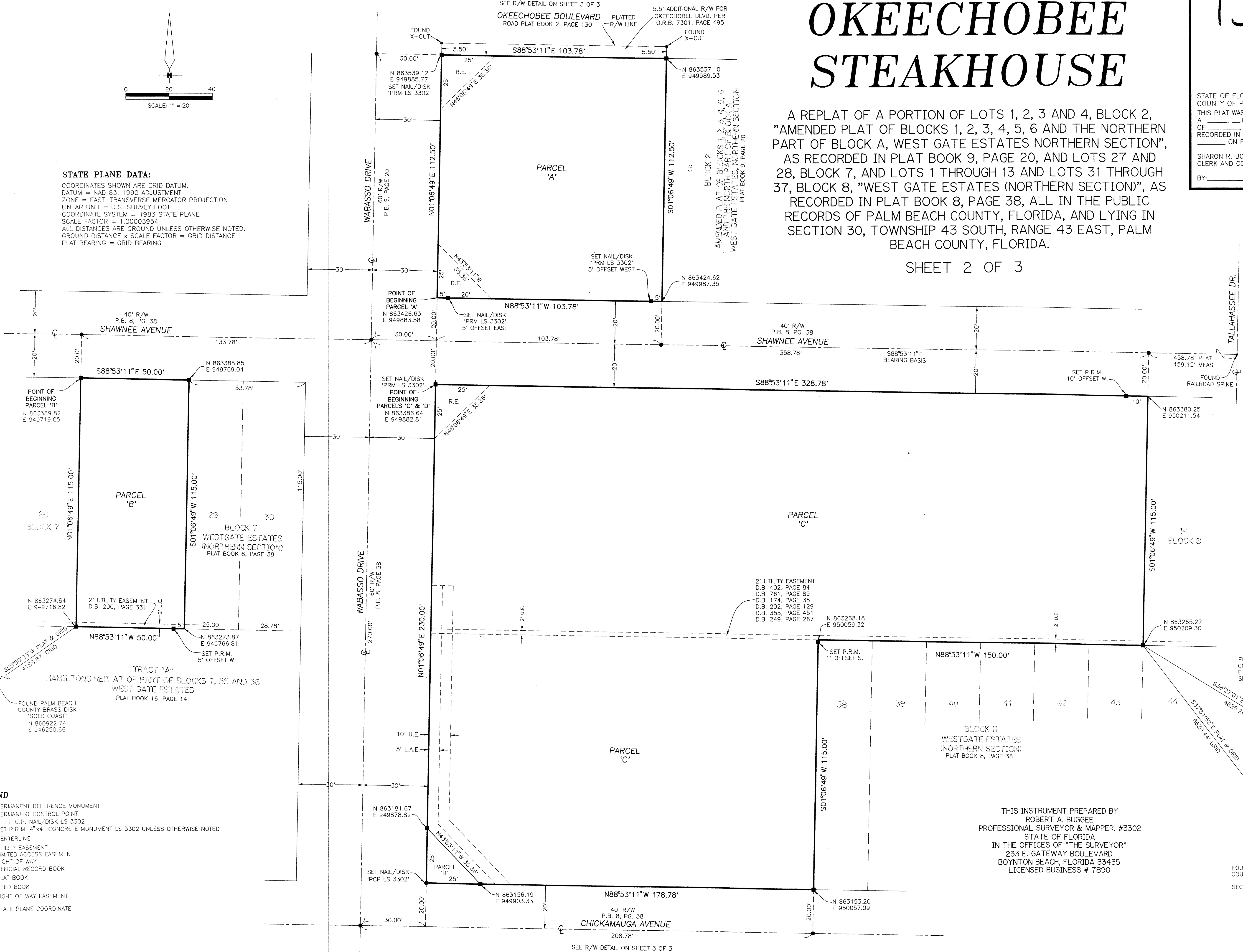
A REPLAT OF A PORTION OF LOTS 1, 2, 3 AND 4, BLOCK 2, "AMENDED PLAT OF BLOCKS 1, 2, 3, 4, 5, 6 AND THE NORTHERN PART OF BLOCK A, WEST GATE ESTATES NORTHERN SECTION", AS RECORDED IN PLAT BOOK 9, PAGE 20, AND LOTS 27 AND 28, BLOCK 7, AND LOTS 1 THROUGH 13 AND LOTS 31 THROUGH 37, BLOCK 8, "WEST GATE ESTATES (NORTHERN SECTION)", AS RECORDED IN PLAT BOOK 8, PAGE 38, ALL IN THE PUBLIC RECORDS OF PALM BEACH COUNTY, FLORIDA, AND LYING IN SECTION 30, TOWNSHIP 43 SOUTH, RANGE 43 EAST, PALM BEACH COUNTY, FLORIDA.

SHEET 2 OF 3

STATE OF FLORIDA  
COUNTY OF PALM BEACH  
THIS PLAT WAS FILED FOR RECORD AT \_\_\_\_\_ M., THIS \_\_\_\_\_ DAY OF \_\_\_\_\_, 2014, AND DULY RECORDED IN PLAT BOOK NO. \_\_\_\_\_ ON PAGE \_\_\_\_\_  
SHARON R. BOCK  
CLERK AND COMPTROLLER  
BY: \_\_\_\_\_ D.C.



**STATE PLANE DATA:**  
COORDINATES SHOWN ARE GRID DATUM.  
DATUM = NAD 83, 1990 ADJUSTMENT  
ZONE = EAST, TRANSVERSE MERCATOR PROJECTION  
LINEAR UNIT = U.S. SURVEY FOOT  
COORDINATE SYSTEM = 1983 STATE PLANE  
SCALE FACTOR = 1.00003954  
ALL DISTANCES ARE GROUND UNLESS OTHERWISE NOTED.  
GROUND DISTANCE x SCALE FACTOR = GRID DISTANCE  
PLAT BEARING = GRID BEARING



- LEGEND**
- P.R.M. = PERMANENT REFERENCE MONUMENT
  - P.C.P. = PERMANENT CONTROL POINT
  - = SET P.C.P. NAIL/DISK LS 3302
  - = SET P.R.M. 4"x4" CONCRETE MONUMENT LS 3302 UNLESS OTHERWISE NOTED
  - ⊕ = CENTERLINE
  - U.E. = UTILITY EASEMENT
  - L.A.E. = LIMITED ACCESS EASEMENT
  - R/W = RIGHT OF WAY
  - O.R.B. = OFFICIAL RECORD BOOK
  - P.B. = PLAT BOOK
  - D.B. = DEED BOOK
  - R.E. = RIGHT OF WAY EASEMENT
  - N 863273.87 E 949766.81 = STATE PLANE COORDINATE

THIS INSTRUMENT PREPARED BY  
ROBERT A. BUGGEE  
PROFESSIONAL SURVEYOR & MAPPER. #3302  
STATE OF FLORIDA  
IN THE OFFICES OF "THE SURVEYOR"  
233 E. GATEWAY BOULEVARD  
BOYNTON BEACH, FLORIDA 33435  
LICENSED BUSINESS # 7890

FOUND PALM BEACH COUNTY BRASS DISK S.E. CORNER SECTION 30-43-43 N 858007.18 E 954248.52