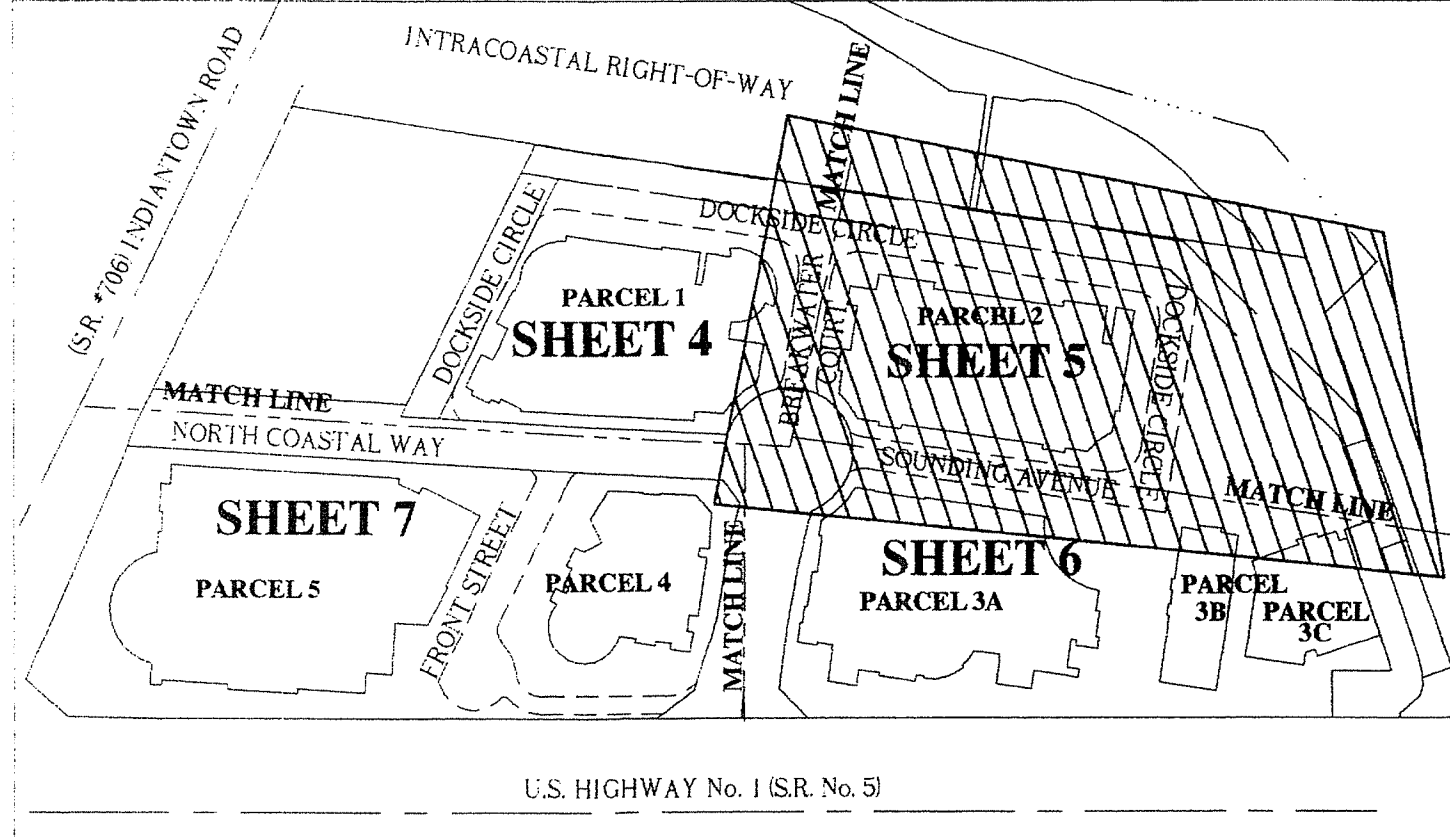
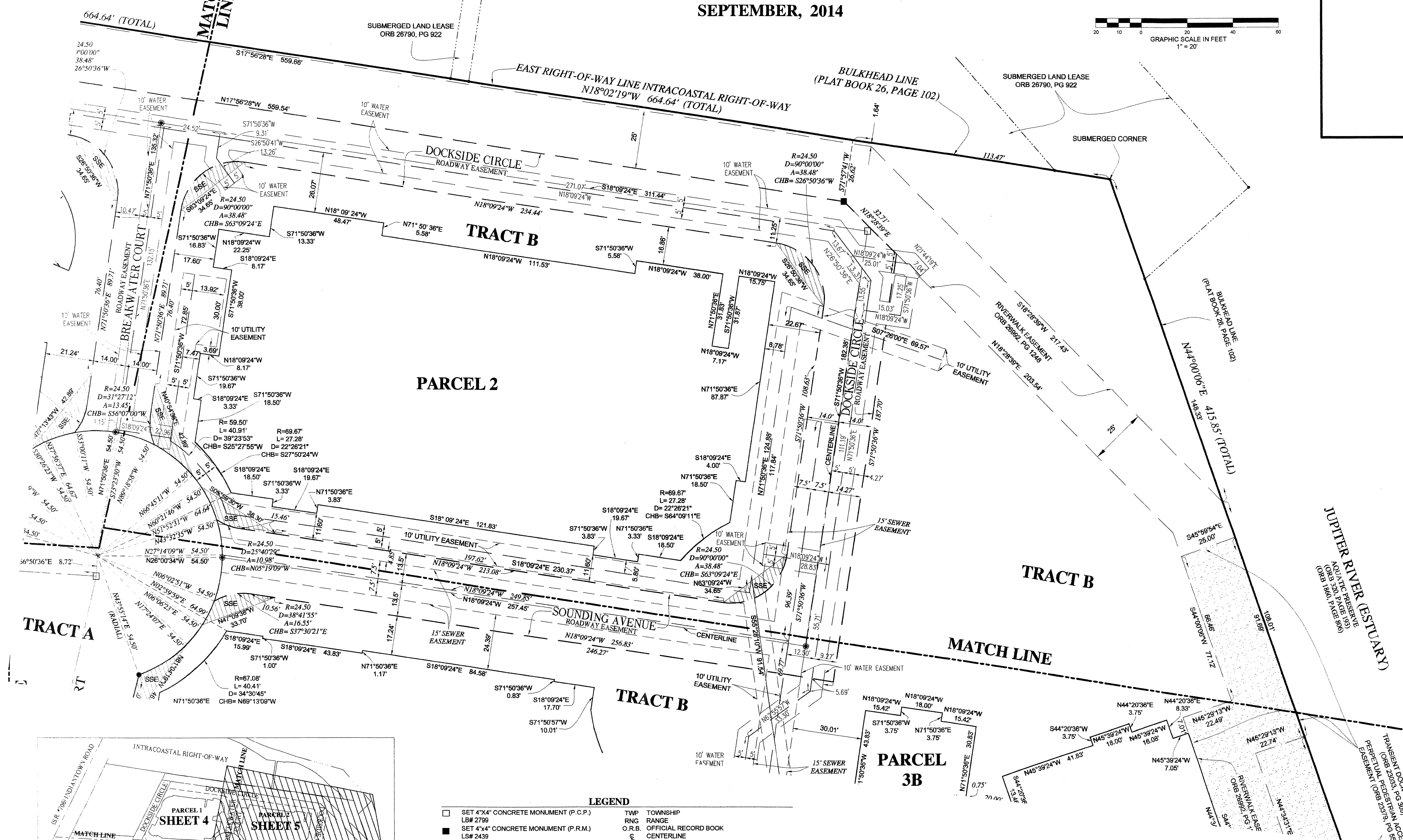
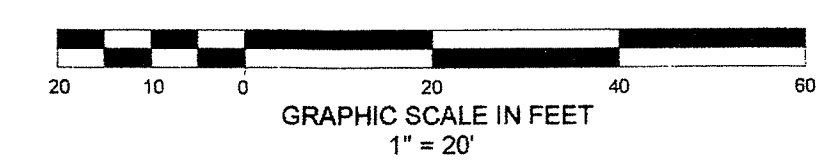


# HARBOURSIDE, P.U.D.

LYING IN SECTION 6, TOWNSHIP 41 SOUTH, RANGE 43 EAST,  
TOWN OF JUPITER, PALM BEACH COUNTY, FLORIDA  
SEPTEMBER, 2014



**LEGEND**

□ SET 4"x4" CONCRETE MONUMENT (P.C.P.)	TWP TOWNSHIP
■ SET 4"x4" CONCRETE MONUMENT (P.R.M.)	RNG RANGE
LS# 2439	O.R.B. OFFICIAL RECORD BOOK
● SET MAG NAIL & DISC (P.C.P.)	CG CENTERLINE
LB# 2799	PG PAGE
● SET MAG NAIL & DISC LB# 2799 (TRACT CORNERS)	S.R. STATE ROAD
○ SET 5/8" IRON ROD & CAP LB# 2799 (TRACT CORNERS)	TRANSIENT DOCK EASEMENT & PERPETUAL PEDESTRIAN ACCESS EASEMENT
R RADIUS	SAFE SIGHT EASEMENT (SSE)
D DELTA ANGLE	F.D.O.T. FLORIDA DEPARTMENT OF TRANSPORTATION
A ARC LENGTH	P.R.M. PERMANENT REFERENCE MONUMENT
CHB CHORD BEARING	P.C.P. PERMANENT CONTROL POINT
CHD CHORD DISTANCE	
ID IDENTIFICATION NUMBER	

**SHEET 5 OF 7**  
**DAILEY AND ASSOCIATES, INC.**  
 Surveying and Mapping  
 112 N. U.S. Highway No. 1  
 Tequesta, FL 33469  
 Phone: (561) 746-8424  
 BUSINESS LICENSE: LB# 2799