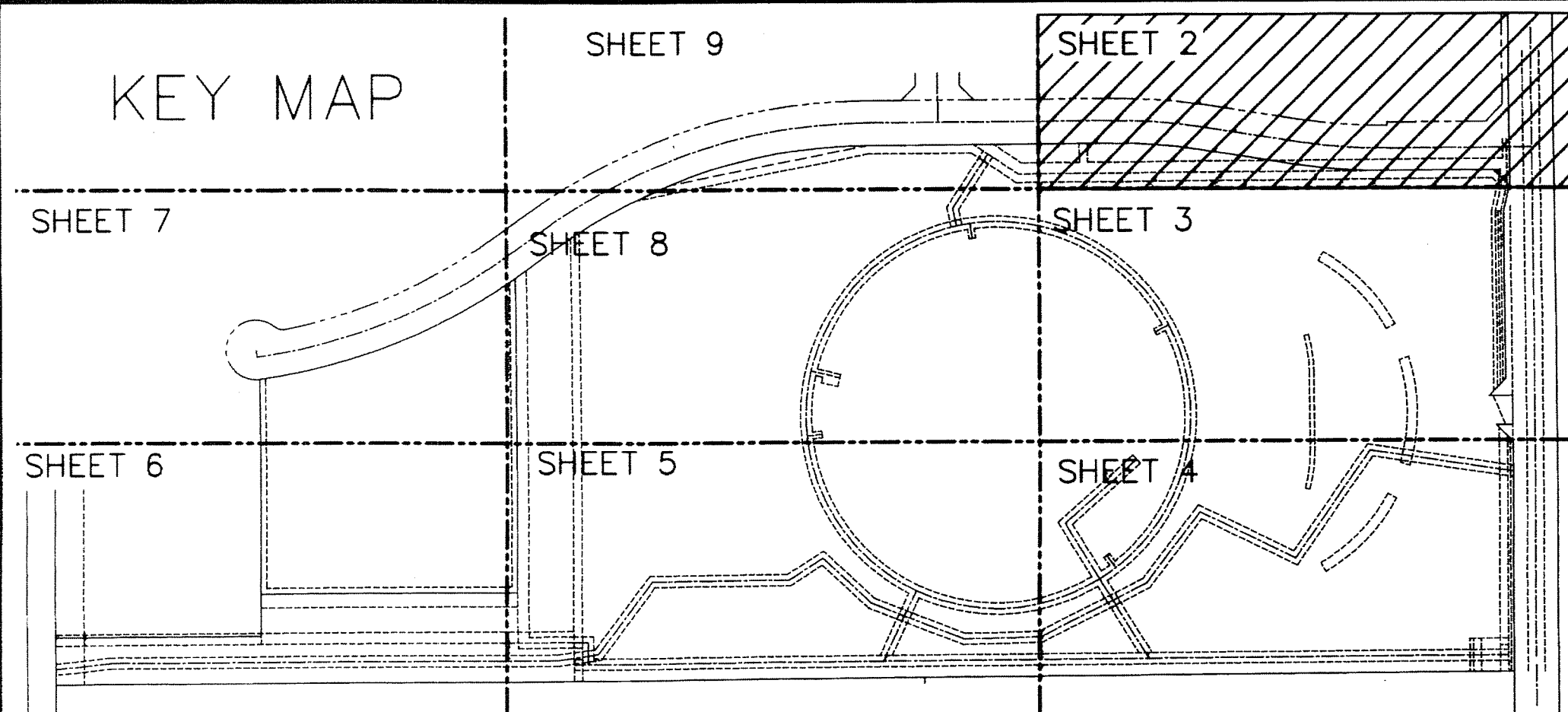


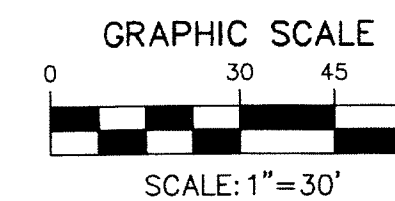
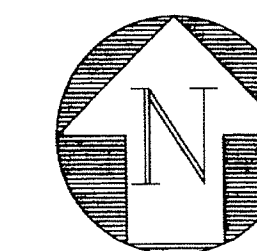
KEY MAP



# BETHESDA HEALTH CARE MUPD

BEING A REPLAT OF A PORTION OF PARCEL B-2 AND A PORTION OF PARCEL A-2 OF BOYNTON BEACH ENTERPRISE CENTER PLAT NO. 2 AS RECORDED IN PLAT BOOK 79, PAGE 152, LYING IN SECTION 28, TOWNSHIP 45 SOUTH, RANGE 42 EAST, PALM BEACH COUNTY, FLORIDA

SHEET 2 OF 9



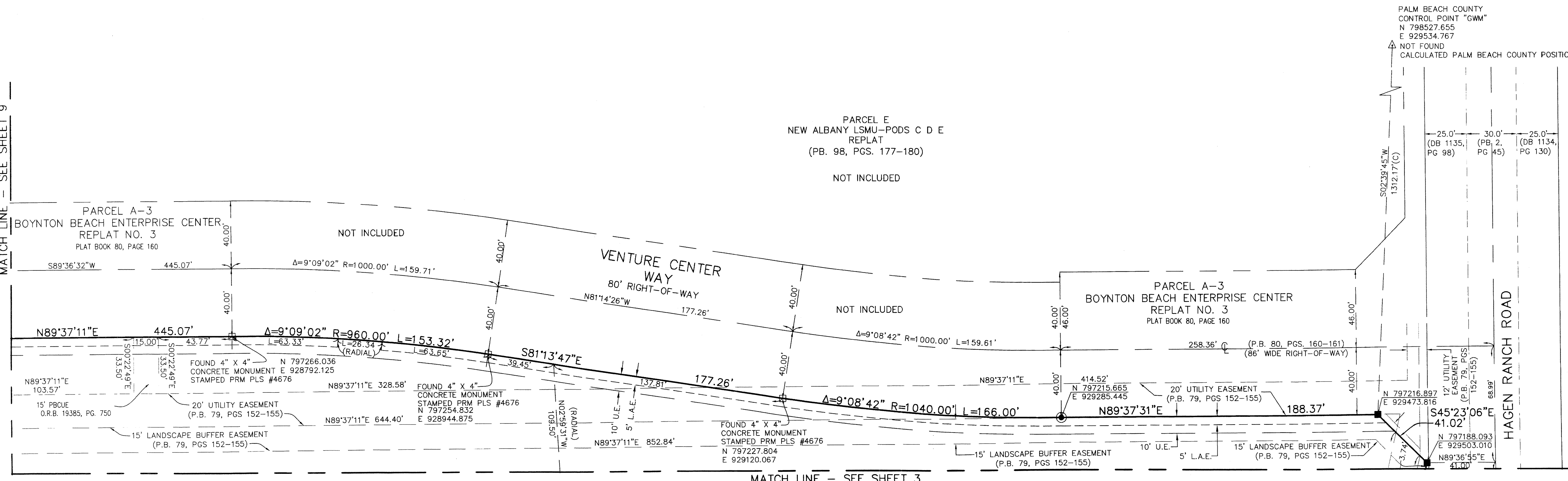
STATE OF FLORIDA }  
 COUNTY OF PALM BEACH } S.S.  
 THIS INSTRUMENT WAS FILED FOR  
 RECORD AT \_\_\_\_\_  
 THIS \_\_\_\_ DAY OF \_\_\_\_\_  
 201 \_\_\_\_ AND DULY RECORDED  
 IN PLAT BOOK NO. \_\_\_\_\_  
 ON PAGE \_\_\_\_\_  
 SHARON R. BOCK,  
 CLERK AND COMPTROLLER

BY: \_\_\_\_\_ D.C.

159

MATCH LINE - SEE SHEET 9

X:\Land Projects\B2\5013.07.dwg\5013.07PL101(GSTATE PLANE).dwg, 7/2/2014, 8:21:31 AM EDT



PALM BEACH COUNTY  
 CONTROL POINT "GWM"  
 N 798527.655  
 E 929534.767  
 NOT FOUND  
 CALCULATED PALM BEACH COUNTY POSITION

**LEGEND**

- |            |                                  |        |   |       |                                    |
|------------|----------------------------------|--------|---|-------|------------------------------------|
| ☉          | CENTERLINE                       | R.P.B. | ROAD PLAT BOOK  | R     | RADIUS                             |
| D.B.       | DEED BOOK                        | R/W    | RIGHT-OF-WAY  | L     | LENGTH                             |
| D.E.       | DRAINAGE EASEMENT                | U.E.   | UTILITY EASEMENT  | Δ     | DELTA ANGLE                        |
| FPL        | FLORIDA POWER & LIGHT            | (C)    | CALCULATED  | PRM   | PERMANENT REFERENCE MONUMENT       |
| L.A.E.     | LIMITED ACCESS EASEMENT          | (D)    | DEED  | PK    | PARKER KAYLON                      |
| O.R.B.     | OFFICIAL RECORD BOOK             | (P)    | PLAT  | PLS   | PROFESSIONAL LAND SURVEYOR         |
| P.B.C.P.R. | PALM BEACH COUNTY PUBLIC RECORDS | ■      | SET 4" X 4" CONCRETE MONUMENT WITH ALUMINUM DISK STAMPED P.R.M. LB#6603 | PBCUE | PALM BEACH COUNTY UTILITY EASEMENT |
| P.B.       | PLAT BOOK                        | □      | FOUND PERMANENT REFERENCE MONUMENT AS NOTED                             |       |                                    |
| P.O.B.     | POINT OF BEGINNING               | ●      | SET MAG NAIL AND DISK PRM LB#6603                                       |       |                                    |
| P.O.C.     | POINT OF COMMENCEMENT            | ●      | SET #5 IRON ROD AND CAP ENGENUITY LB#6603                               |       |                                    |
| PG.        | PAGE                             |        |   |       |                                    |

**BETHESDA HEALTH CARE MUPD**

A Higher Standard of Excellence  
  
 ENGINEERS • SURVEYORS • GIS MAPPERS

DATE	11/26/13
SCALE	1" = 30'
CAD FILE	5013.07/PL01
SSX PROJECT	5013.07
DRAWN	STAFF
CHECKED	K.BECK

SHEET	<b>2/9</b>
JOB NO.	<b>5013.07</b>

1201 BELVEDERE ROAD, WEST PALM BEACH, FLORIDA 33405  
 PH (561)855-1151 • FAX (561)832-9390  
 WWW.ENGENUITYGROUP.COM