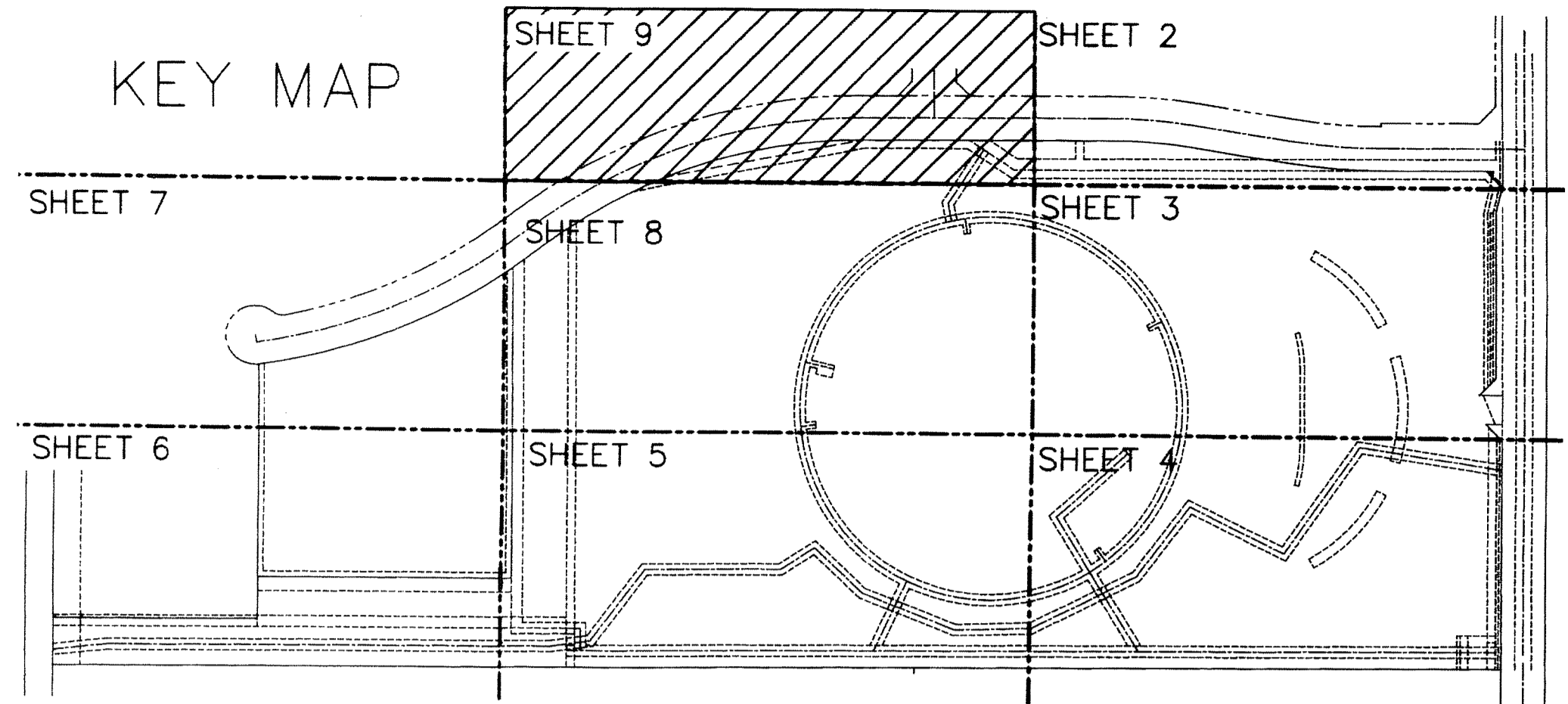


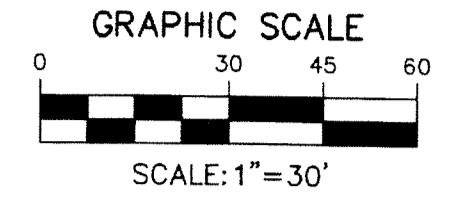
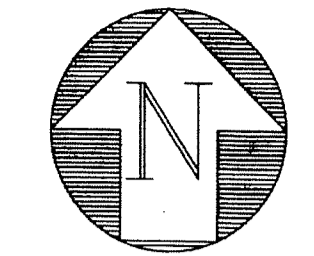
KEY MAP



BETHESDA HEALTH CARE MUPD

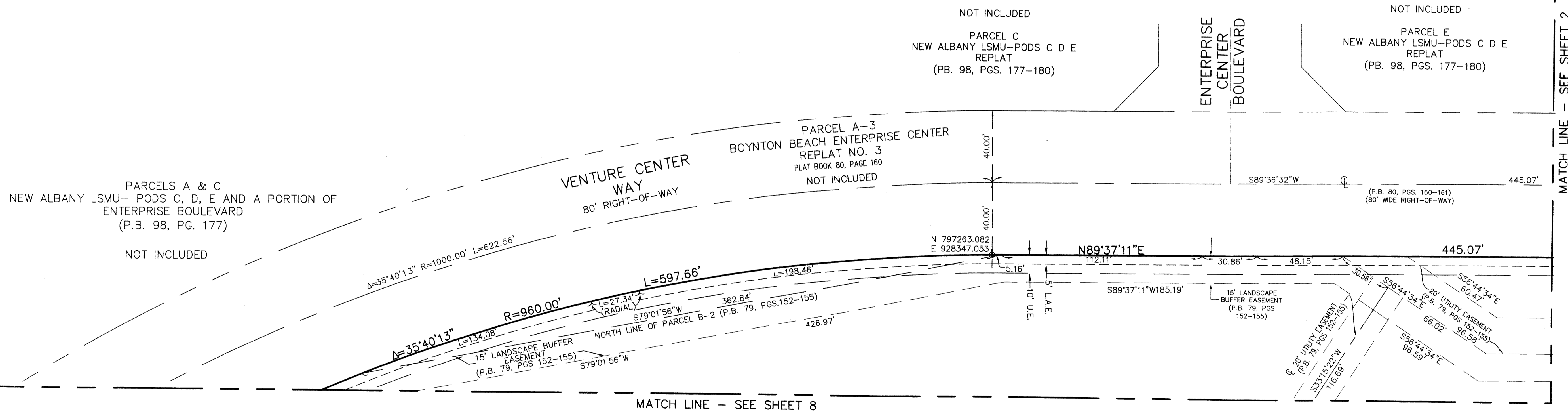
BEING A REPLAT OF A PORTION OF PARCEL B-2 AND A PORTION OF PARCEL A-2 OF BOYNTON BEACH ENTERPRISE CENTER PLAT NO. 2 AS RECORDED IN PLAT BOOK 79, PAGE 152, LYING IN SECTION 28, TOWNSHIP 45 SOUTH, RANGE 42 EAST, PALM BEACH COUNTY, FLORIDA

SHEET 9 OF 9



STATE OF FLORIDA }
 COUNTY OF PALM BEACH } S.S.
 THIS INSTRUMENT WAS FILED FOR
 RECORD AT _____
 THIS ____ DAY OF _____
 201 ____ AND DULY RECORDED
 IN PLAT BOOK NO. _____
 ON PAGE _____
 SHARON R. BOCK,
 CLERK AND COMPTROLLER
 BY: _____ D.C.

166



LEGEND

- | | | | | | |
|------------|----------------------------------|--------|---|-------|------------------------------------|
| CL | CENTERLINE | R.P.B. | ROAD PLAT BOOK | R | RADIUS |
| D.B. | DEED BOOK | R/W | RIGHT-OF-WAY | L | LENGTH |
| D.E. | DRAINAGE EASEMENT | U.E. | UTILITY EASEMENT | Δ | DELTA ANGLE |
| FPL | FLORIDA POWER & LIGHT | (C) | CALCULATED | PRM | PERMANENT REFERENCE MONUMENT |
| L.A.E. | LIMITED ACCESS EASEMENT | (D) | DEED | PK | PARKER KAYLON |
| O.R.B. | OFFICIAL RECORD BOOK | (P) | PLAT | PLS | PROFESSIONAL LAND SURVEYOR |
| P.B.C.P.R. | PALM BEACH COUNTY PUBLIC RECORDS | ■ | SET 4" X 4" CONCRETE MONUMENT WITH ALUMINUM DISK STAMPED P.R.M. LB#6603 | PBCUE | PALM BEACH COUNTY UTILITY EASEMENT |
| P.B. | PLAT BOOK | □ | FOUND PERMANENT REFERENCE MONUMENT AS NOTED | | |
| P.O.B. | POINT OF BEGINNING | ● | SET MAG NAIL AND DISK PRM LB#6603 | | |
| P.O.C. | POINT OF COMMENCEMENT | ● | SET #5 IRON ROD AND CAP ENGENUITY LB#6603 | | |
| PG. | PAGE | | | | |

BETHESDA HEALTH CARE MUPD

A Higher Standard of Excellence
engenuity group inc.
 ENGINEERS • SURVEYORS • GIS MAPPERS

1201 BELVEDERE ROAD, WEST PALM BEACH, FLORIDA 33405
 PH (561) 655-1151 • FAX (561) 832-9390
 WWW.ENGENUITYGROUP.COM

DATE	11/26/13
SCALE	1" = 30'
CAD FILE	5013.07PL01
SOX PROJECT	5013.07
DRAWN	STAFF
CHECKED	K.BECK

SHEET
 E.O.
 T **9/9**

JOB NO.
5013.07

X:\Land Projects\2013\5013.07\Drawings\5013.07PL01(STATE PLATE).dwg 7/2/2014 8:21:31 AM EDT