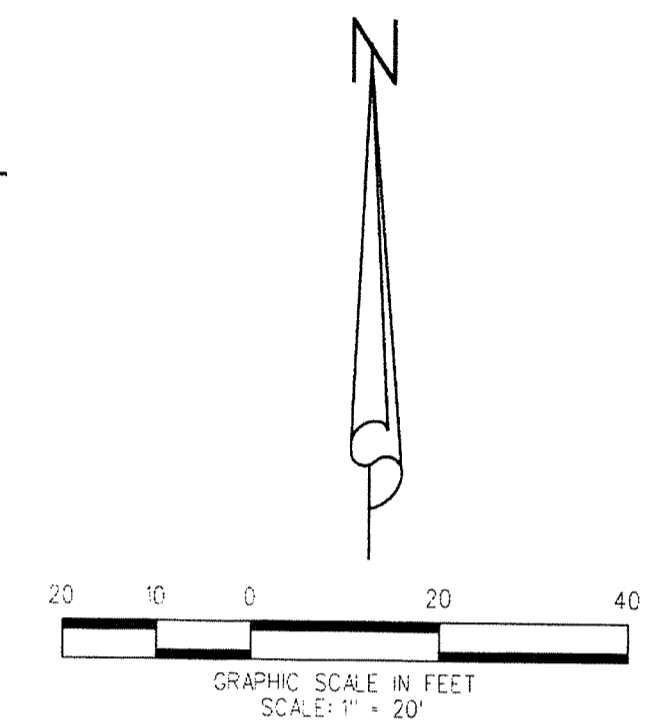
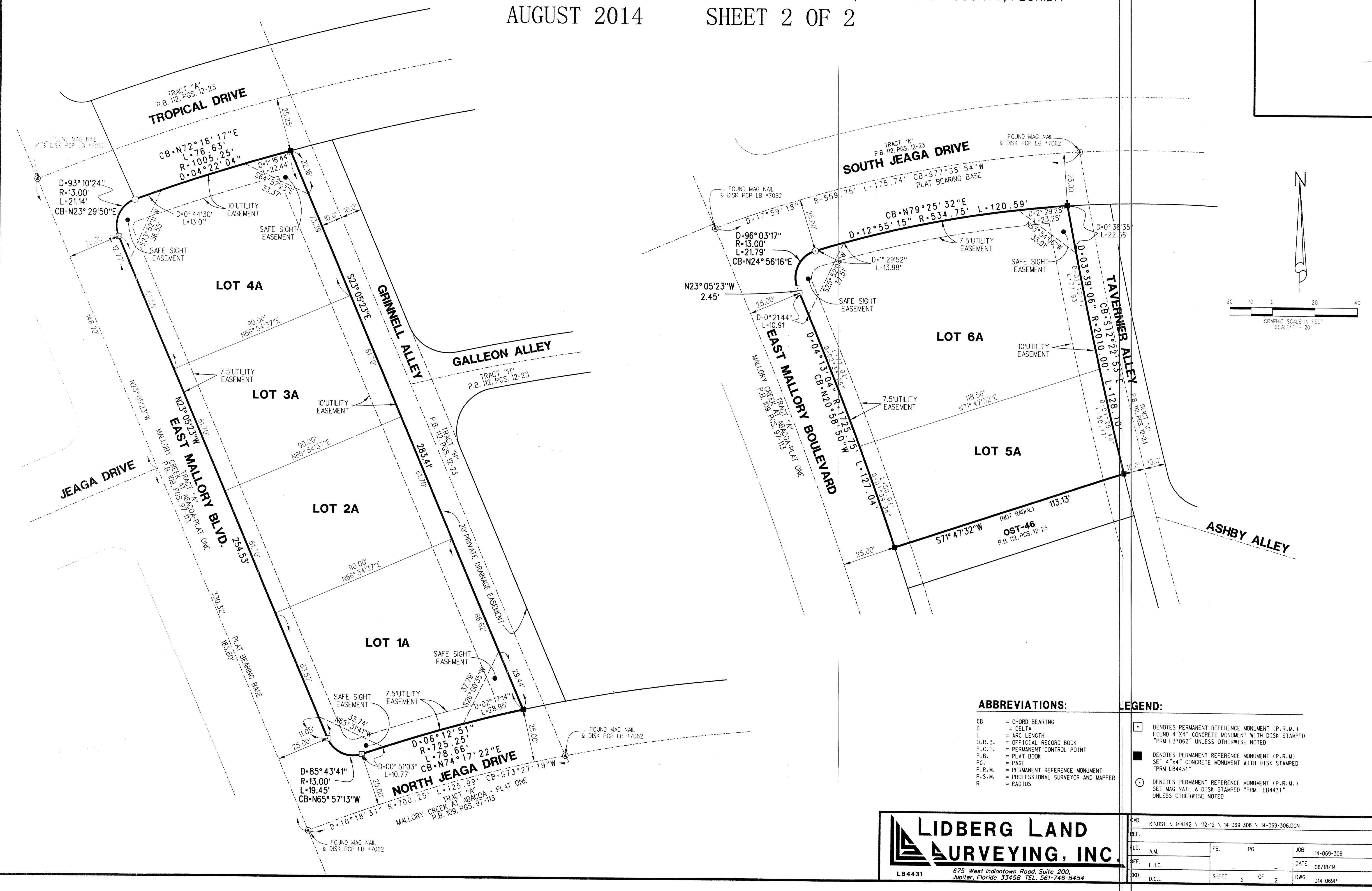


MALLORY CREEK AT ABACOA - PLAT TWO - REPLAT NO. 4

BEING A REPLAT OF LOTS 397 THROUGH 400, TOGETHER WITH LOTS 458 THROUGH 465, AS SHOWN ON MALLORY CREEK AT ABACOA - PLAT TWO, RECORDED IN PLAT BOOK 112, PAGES 12 THROUGH 23, PUBLIC RECORDS OF PALM BEACH COUNTY, FLORIDA, LYING IN SECTION 14, TOWNSHIP 41-SOUTH, RANGE 42 EAST, TOWN OF JUPITER, PALM BEACH COUNTY, FLORIDA

AUGUST 2014 SHEET 2 OF 2

174



ABBREVIATIONS:
 CB = CHORD BEARING
 D = DELTA
 L = ARC LENGTH
 O.R.B. = OFFICIAL RECORD BOOK
 P.C.P. = PERMANENT CONTROL POINT
 P.B. = PLAT BOOK
 PG. = PAGE
 P.R.M. = PERMANENT REFERENCE MONUMENT
 P.S.M. = PROFESSIONAL SURVEYOR AND MAPPER
 R = RADIUS

LEGEND:
 □ DENOTES PERMANENT REFERENCE MONUMENT (P.R.M.) FOUND 4"x4" CONCRETE MONUMENT WITH DISK STAMPED "PRM LB7062" UNLESS OTHERWISE NOTED
 ■ DENOTES PERMANENT REFERENCE MONUMENT (P.R.M.) SET 4"x4" CONCRETE MONUMENT WITH DISK STAMPED "PRM LB4431"
 ○ DENOTES PERMANENT REFERENCE MONUMENT (P.R.M.) SET MAG NAIL & DISK STAMPED "PRM LB4431" UNLESS OTHERWISE NOTED

LIDBERG LAND SURVEYING, INC.
 LB4431 675 West Indiantown Road, Suite 200, Jupiter, Florida 33458 TEL. 561-746-8454

AD.	K\UST \ 144142 \ 112-12 \ 14-069-306 \ 14-069-306.DGN		
REF.			
LD.	AM.	FB.	PG.
JOB	14-069-306		
FF.	L.J.C.		DATE
			06/18/14
XD.	D.C.L.	SHEET	2 OF 2
		DWG.	D14-069P