

THIS INSTRUMENT PREPARED BY
DAVID P. LINDLEY
OF
CAULFIELD and WHEELER, INC.
SURVEYORS - ENGINEERS - PLANNERS
7900 GLADES ROAD, SUITE 100
BOCA RATON, FLORIDA 33434 - (561)392-1991
SEPTEMBER - 2013

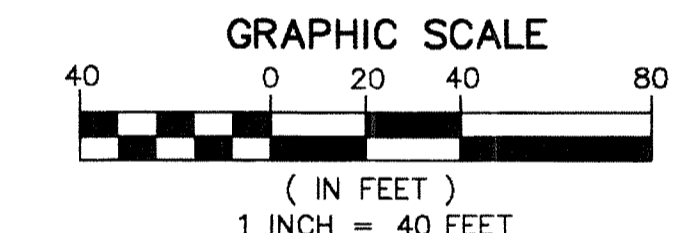
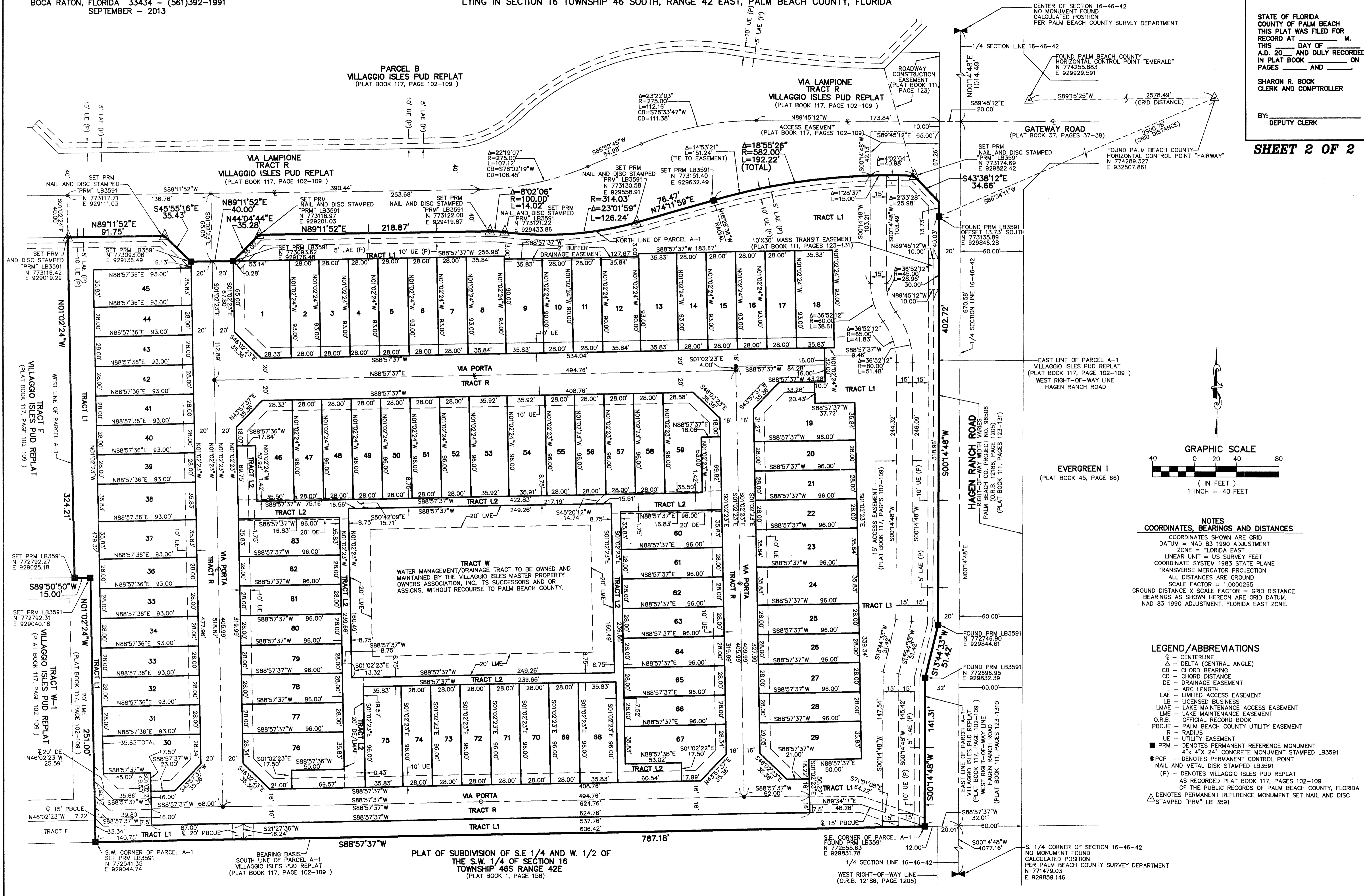
VILLAGGIO ISLES PARCEL A-1 REPLAT

VILLAGGIO ISLES PUD, A PLANNED UNIT DEVELOPMENT
BEING A REPLAT OF PARCEL A-1, VILLAGGIO ISLES PUD REPLAT
AS RECORDED PLAT BOOK 117, PAGES 102 THROUGH 109 OF THE PUBLIC RECORDS OF PALM BEACH COUNTY, FLORIDA
LYING IN SECTION 16 TOWNSHIP 46 SOUTH, RANGE 42 EAST, PALM BEACH COUNTY, FLORIDA

182

STATE OF FLORIDA
COUNTY OF PALM BEACH
THIS PLAT WAS FILED FOR
RECORD AT _____ M.
THIS _____ DAY OF _____
A.D. 20____ AND DULY RECORDED
IN PLAT BOOK _____ ON
PAGES _____ AND _____
SHARON R. BOCK
CLERK AND COMPTROLLER
BY: _____
DEPUTY CLERK

SHEET 2 OF 2



NOTES
COORDINATES, BEARINGS AND DISTANCES
COORDINATES SHOWN ARE GRID
DATUM = NAD 83 1990 ADJUSTMENT
ZONE = FLORIDA EAST
LINEAR UNIT = US SURVEY FEET
COORDINATE SYSTEM 1983 STATE PLANE
TRANSVERSE MERCATOR PROJECTION
ALL DISTANCES ARE GROUND
SCALE FACTOR = 1.0000265
GROUND DISTANCE X SCALE FACTOR = GRID DISTANCE
BEARINGS AS SHOWN HEREON ARE GRID DATUM,
NAD 83 1990 ADJUSTMENT, FLORIDA EAST ZONE.

LEGEND/ABBREVIATIONS
C - CENTERLINE
Δ - DELTA (CENTRAL ANGLE)
CB - CHORD BEARING
CD - CHORD DISTANCE
DE - DRAINAGE EASEMENT
L - ARC LENGTH
LAE - LIMITED ACCESS EASEMENT
LB - LICENSED BUSINESS
LMAE - LAKE MAINTENANCE ACCESS EASEMENT
LME - LAKE MAINTENANCE EASEMENT
O.R.B. - OFFICIAL RECORD BOOK
PBCUE - PALM BEACH COUNTY UTILITY EASEMENT
R - RADIUS
UE - UTILITY EASEMENT
■ PRM - DENOTES PERMANENT REFERENCE MONUMENT
4" x 4" x 24" CONCRETE MONUMENT STAMPED LB3591
● PCP - DENOTES PERMANENT CONTROL POINT
NAIL AND METAL DISK STAMPED LB3591
(P) - DENOTES VILLAGGIO ISLES PUD REPLAT
AS RECORDED PLAT BOOK 117, PAGES 102-109
OF THE PUBLIC RECORDS OF PALM BEACH COUNTY, FLORIDA
▲ DENOTES PERMANENT REFERENCE SET NAIL AND DISC
STAMPED "PRM" LB 3591

PLAT OF SUBDIVISION OF S.E. 1/4 AND W. 1/2 OF
THE S.W. 1/4 OF SECTION 16
TOWNSHIP 46S RANGE 42E
(PLAT BOOK 1, PAGE 158)

S. 1/4 CORNER OF SECTION 16-46-42
NO MONUMENT FOUND
CALCULATED POSITION
PER PALM BEACH COUNTY SURVEY DEPARTMENT
N 771479.03
E 929859.146