

5853.00
 THIS INSTRUMENT PREPARED BY
 DAVID P. LINDLEY
 OF
CAULFIELD and WHEELER, INC.
 SURVEYORS - ENGINEERS - PLANNERS
 7900 GLADES ROAD, SUITE 100
 BOCA RATON, FLORIDA 33434 - (561)392-1991
 NOVEMBER - 2013

GULFSTREAM PRESERVE

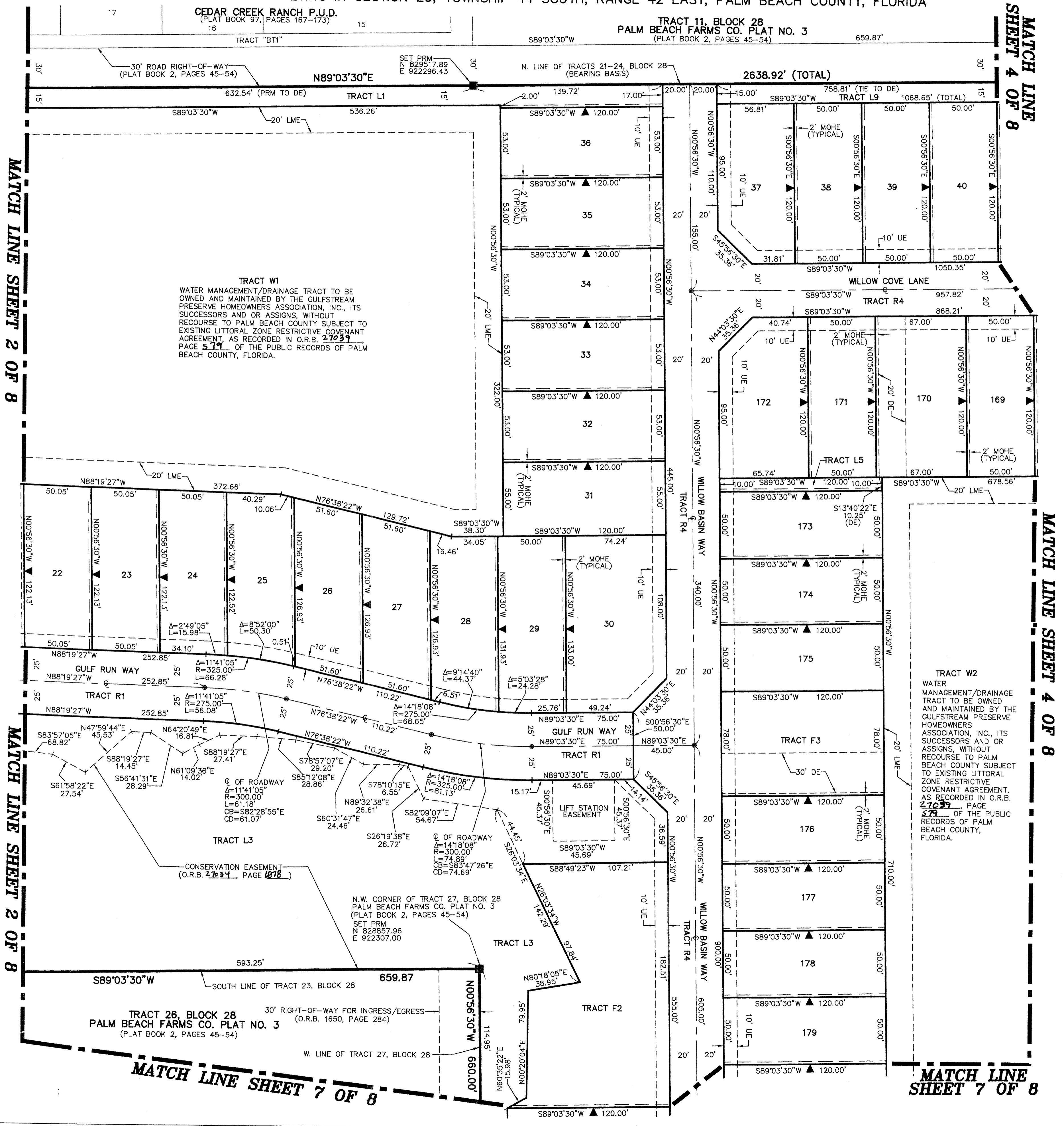
A PLANNED UNIT DEVELOPMENT
 BEING A REPLAT OF ALL OF TRACTS 21 THROUGH 24, 27, 28 AND A PORTION OF TRACT 25, BLOCK 28,
 PALM BEACH FARMS COMPANY PLAT NO. 3,
 AS RECORDED IN PLAT BOOK 2, PAGES 45 THROUGH 54, OF THE PUBLIC RECORDS OF PALM BEACH COUNTY, FLORIDA,
 LYING IN SECTION 29, TOWNSHIP 44 SOUTH, RANGE 42 EAST, PALM BEACH COUNTY, FLORIDA

187

STATE OF FLORIDA
 COUNTY OF PALM BEACH
 THIS PLAT WAS FILED FOR
 RECORD AT _____ M.
 THIS _____ DAY OF _____
 A.D. 20____ AND DULY RECORDED
 IN PLAT BOOK _____ ON
 PAGES _____ AND _____

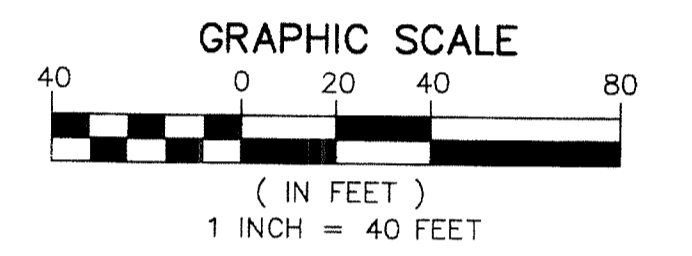
BY: _____
 DEPUTY CLERK

SHEET 3 OF 8



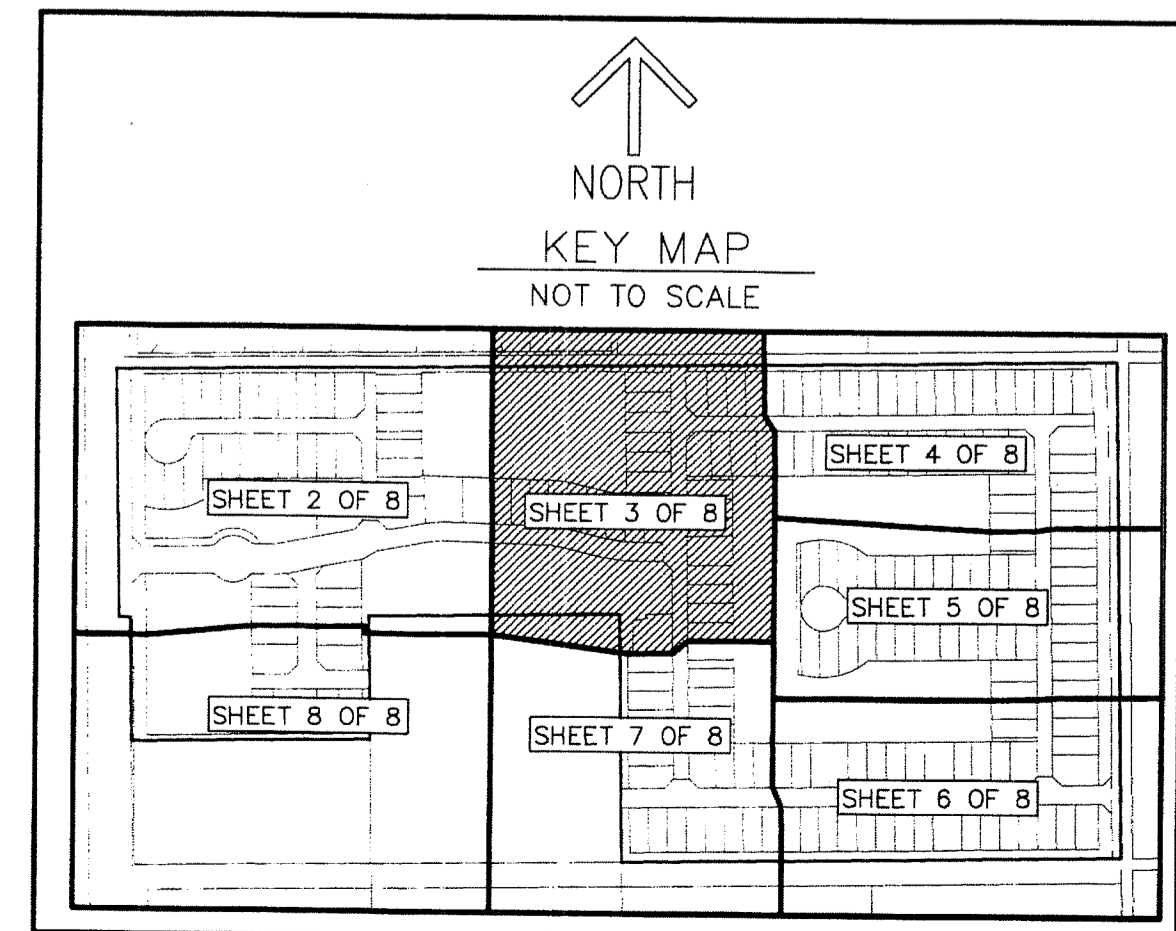
TRACT W1
 WATER MANAGEMENT/DRAINAGE TRACT TO BE OWNED AND MAINTAINED BY THE GULFSTREAM PRESERVE HOMEOWNERS ASSOCIATION, INC., ITS SUCCESSORS AND OR ASSIGNS, WITHOUT RECOURSE TO PALM BEACH COUNTY SUBJECT TO EXISTING LITTORAL ZONE RESTRICTIVE COVENANT AGREEMENT, AS RECORDED IN O.R.B. 27039 PAGE 579 OF THE PUBLIC RECORDS OF PALM BEACH COUNTY, FLORIDA.

TRACT W2
 WATER MANAGEMENT/DRAINAGE TRACT TO BE OWNED AND MAINTAINED BY THE GULFSTREAM PRESERVE HOMEOWNERS ASSOCIATION, INC., ITS SUCCESSORS AND OR ASSIGNS, WITHOUT RECOURSE TO PALM BEACH COUNTY SUBJECT TO EXISTING LITTORAL ZONE RESTRICTIVE COVENANT AGREEMENT, AS RECORDED IN O.R.B. 27039 PAGE 579 OF THE PUBLIC RECORDS OF PALM BEACH COUNTY, FLORIDA.



NOTES
 COORDINATES, BEARINGS AND DISTANCES
 COORDINATES SHOWN ARE GRID
 DATUM = NAD 83 (90/98 ADJUSTMENT)
 ZONE = FLORIDA EAST
 LINEAR UNIT = US SURVEY FEET
 COORDINATE SYSTEM 1983 STATE PLANE
 TRANSVERSE MERCATOR PROJECTION
 ALL DISTANCES ARE GROUND
 SCALE FACTOR = 1.0000236
 GROUND DISTANCE X SCALE FACTOR = GRID DISTANCE
 BEARINGS AS SHOWN HEREON ARE GRID DATUM,
 NAD 83 (90/98 ADJUSTMENT), FLORIDA EAST ZONE.

LEGEND/ABBREVIATIONS
 C - CENTERLINE
 Δ - DELTA (CENTRAL ANGLE)
 BDE - BUFFER DRAINAGE EASEMENT
 CB - CHORD BEARING
 CD - CHORD DISTANCE
 DE - DRAINAGE EASEMENT
 E - EASTING
 L - ARC LENGTH
 LAE - LIMITED ACCESS EASEMENT
 LB - LICENSED BUSINESS
 LBE - LANDSCAPE BUFFER EASEMENT
 LMAE - LAKE MAINTENANCE ACCESS EASEMENT
 LME - LAKE MAINTENANCE EASEMENT
 L.W.D.D. - LAKE WORTH DRAINAGE DISTRICT
 N - NORTHING
 MOHE - MAINTENANCE AND OVERHANG EASEMENT
 O.R.B. - OFFICIAL RECORD BOOK
 PBCUE - PALM BEACH COUNTY UTILITY EASEMENT
 R - RADIUS
 (RAD) - INDICATES RADIAL LINE
 UE - UTILITY EASEMENT
 ◀ - INDICATES "ZERO" SIDE OF LOT LINE
 ■ - DENOTES PERMANENT REFERENCE MONUMENT
 4" x 4" x 24" CONCRETE MONUMENT WITH ALUMINUM DISK STAMPED "PRM LB3591"
 ● - DENOTES PERMANENT CONTROL POINT
 NAIL AND METAL DISK STAMPED "PCP LB3591"



MATCH LINE SHEET 2 OF 8

MATCH LINE SHEET 2 OF 8

MATCH LINE SHEET 7 OF 8

MATCH LINE SHEET 7 OF 8

MATCH LINE SHEET 4 OF 8

MATCH LINE SHEET 4 OF 8