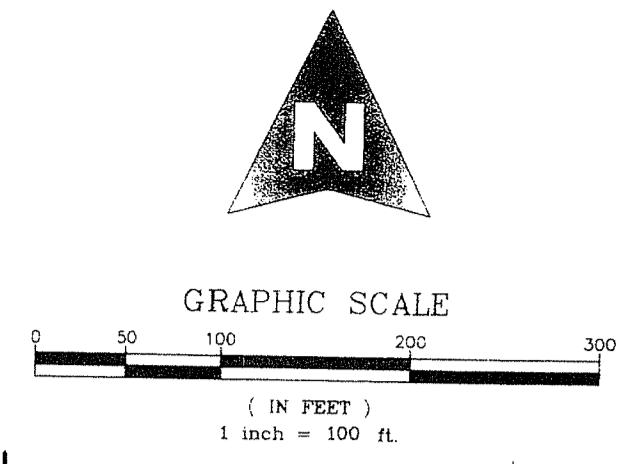


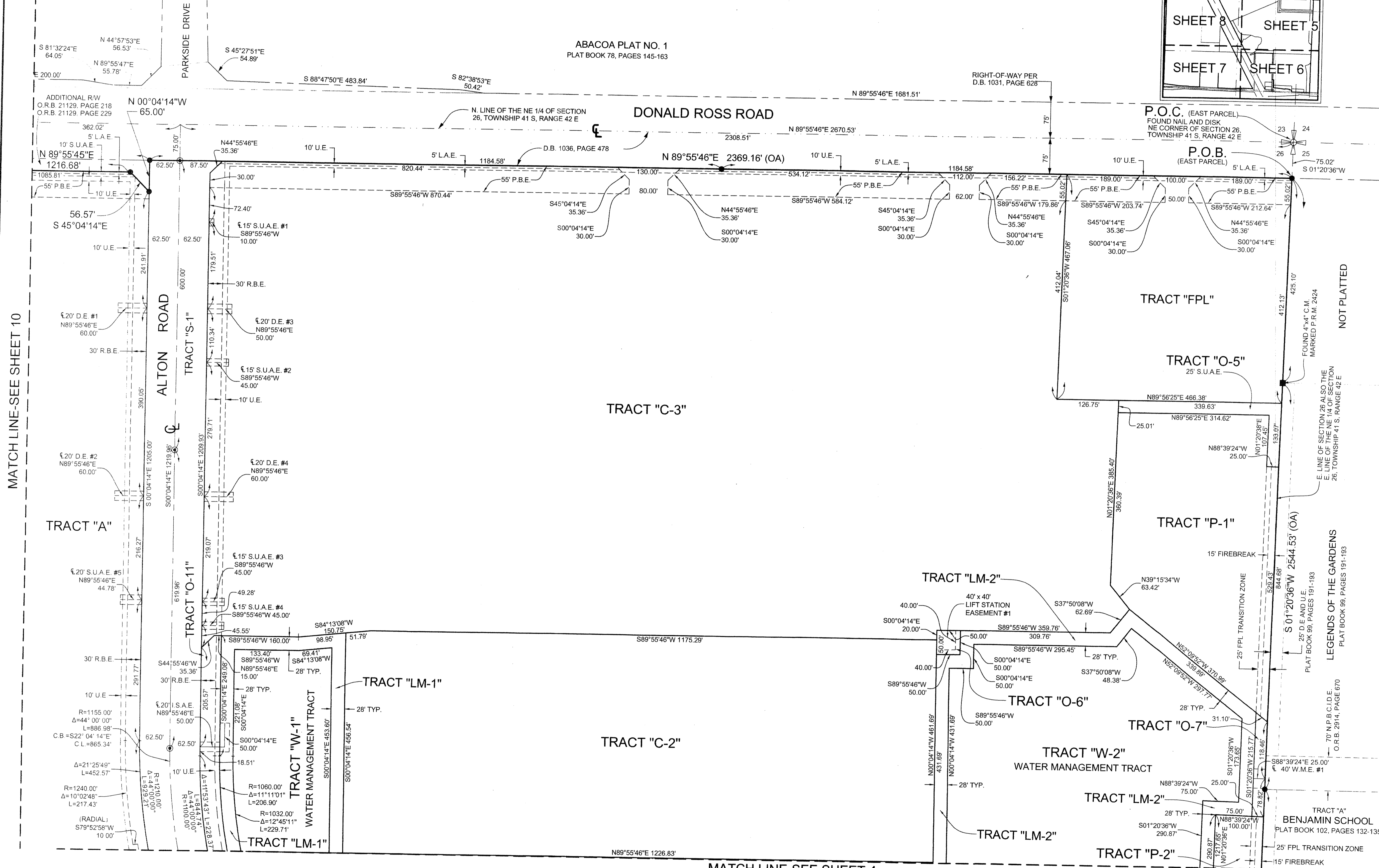
# ALTON PCD

LYING IN SECTIONS 26 AND 35, TOWNSHIP 41 SOUTH, RANGE 42 EAST,  
CITY OF PALM BEACH GARDENS, PALM BEACH COUNTY, FLORIDA.  
OCTOBER, 2014 SHEET 3 OF 10

199



COUNTY OF PALM BEACH )  
STATE OF FLORIDA ) SS  
THIS PLAT WAS FILED FOR RECORD AT \_\_\_\_\_ M. THIS \_\_\_\_\_ DAY OF \_\_\_\_\_, 2014, AND DULY RECORDED IN PLAT BOOK NO. \_\_\_\_\_ ON PAGE \_\_\_\_\_ THRU \_\_\_\_\_  
SHARON R. BOCK, CLERK AND COMPTROLLER  
BY: \_\_\_\_\_, D.C.



MATCH LINE-SEE SHEET 10

MATCH LINE-SEE SHEET 4

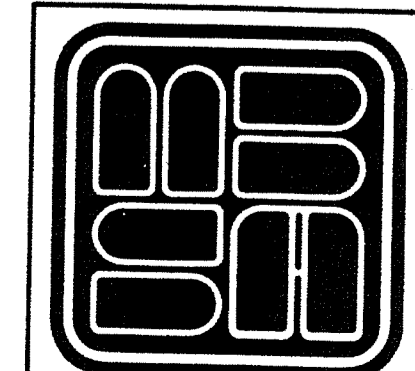
NOT PLATTED

LEGENDS OF THE GARDENS  
PLAT BOOK 98, PAGES 191-193

70' N.P.B.C.I.D.E.  
O.R.B. 2914, PAGE 670

TRACT "A"  
BENJAMIN SCHOOL  
PLAT BOOK 102, PAGES 132-135

SHEET 3 OF 10



**MICHAEL B. SCHORAH & ASSOCIATES, INC.**  
1850 FOREST HILL BLVD., SUITE 206  
WEST PALM BEACH, FLORIDA 33406  
EB# 2438 TEL. (561) 968-0080 FAX. (561) 642-9726 LB# 2438

ALTON PCD