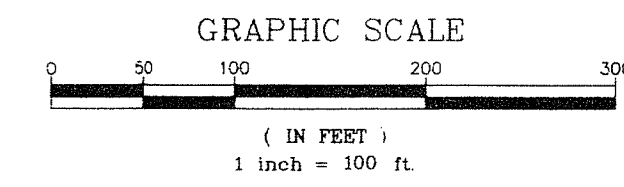
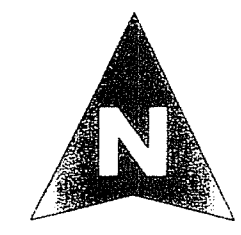
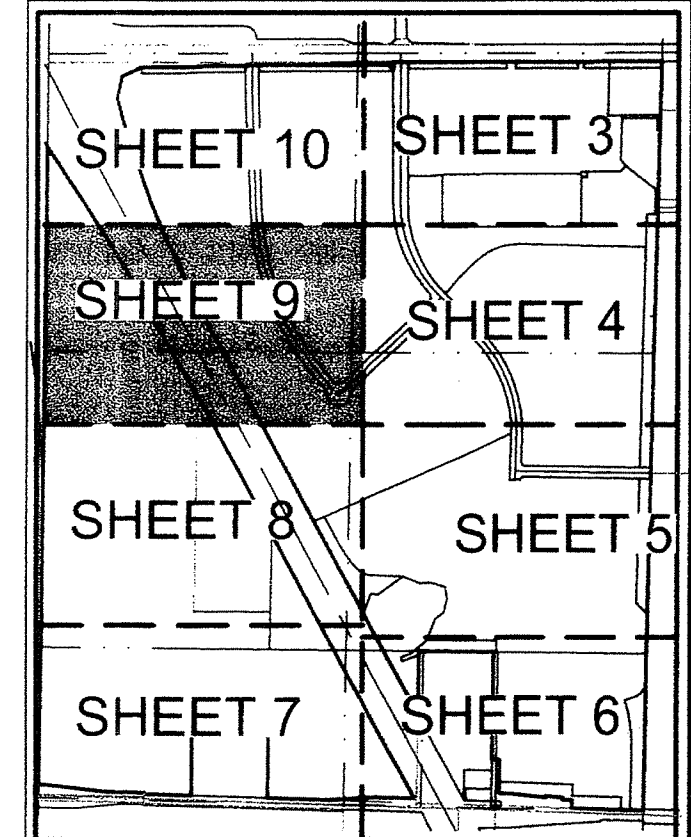


ALTON PCD

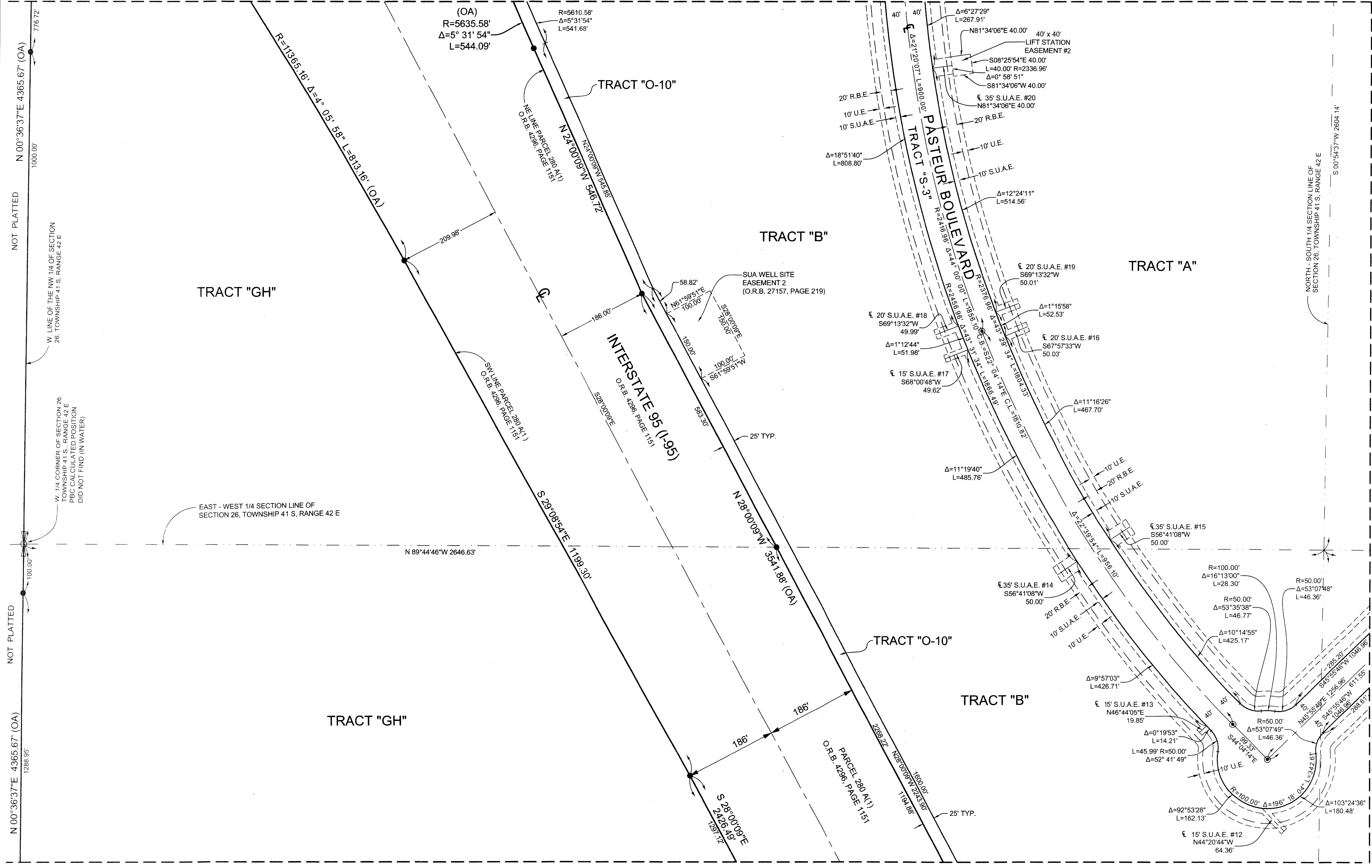
LYING IN SECTIONS 26 AND 35, TOWNSHIP 41 SOUTH, RANGE 42 EAST,
CITY OF PALM BEACH GARDENS, PALM BEACH COUNTY, FLORIDA.
OCTOBER, 2014 SHEET 9 OF 10



COUNTY OF PALM BEACH)
STATE OF FLORIDA) SS
THIS PLAT WAS FILED FOR RECORD AT)
M. THIS) DAY OF)
2014, AND DULY)
RECORDED IN PLAT BOOK NO.)
ON PAGE) THRU)
SHARON R. BOCK,
CLERK AND COMPTROLLER
BY: _____, D.C.

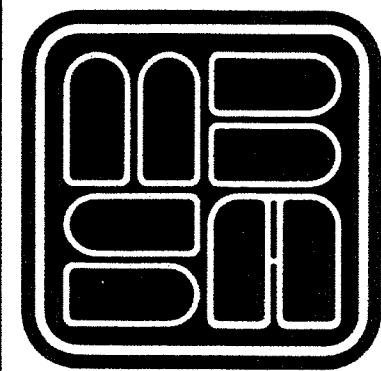


KEY MAP
NOT TO SCALE



NOT PLATTED N 00°36'37"E 4365.67' (OA)
NOT PLATTED N 00°36'37"E 4365.67' (OA)

MATCH LINE-SEE SHEET 10
MATCH LINE-SEE SHEET 8



MICHAEL B. SCHORAH & ASSOCIATES, INC.
1850 FOREST HILL BLVD., SUITE 206
WEST PALM BEACH, FLORIDA 33406
E# 2438 TEL. (561) 968-0080 FAX. (561) 642-9726 LB# 2438