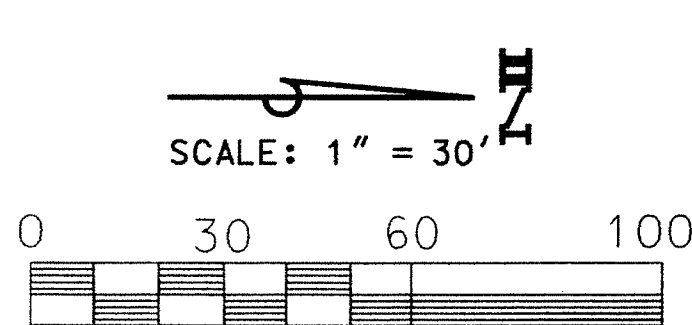
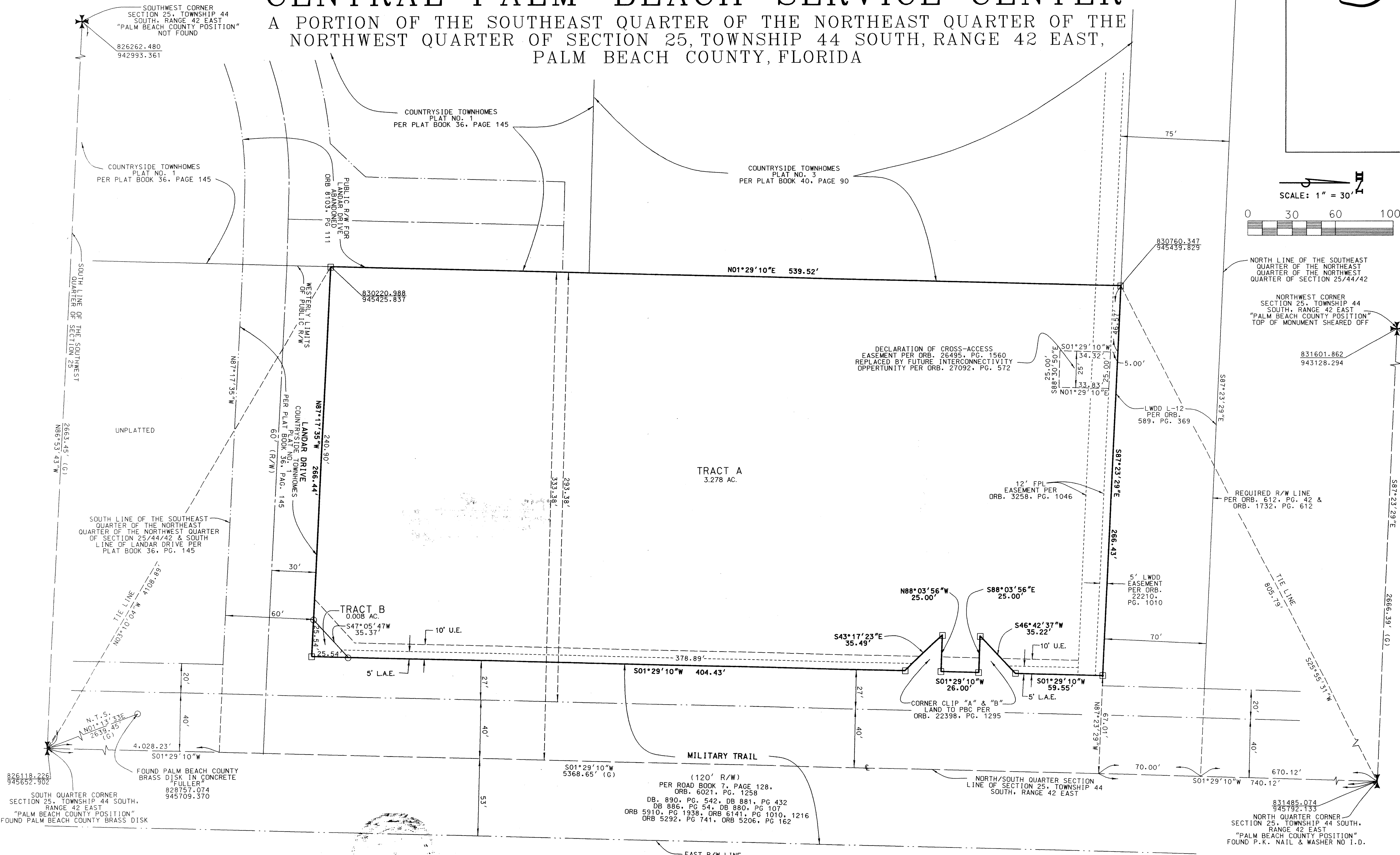


# PALM BEACH COUNTY TAX COLLECTOR-CENTRAL PALM BEACH SERVICE CENTER

## A PORTION OF THE SOUTHEAST QUARTER OF THE NORTHEAST QUARTER OF THE NORTHWEST QUARTER OF SECTION 25, TOWNSHIP 44 SOUTH, RANGE 42 EAST, PALM BEACH COUNTY, FLORIDA

5



SHEET: 2	<b>PALM BEACH COUNTY TAX COLLECTOR - CENTRAL PALM BEACH SERVICE CENTER</b> DESIGN FILE NAME: S-3-14-3503.DGN DRAWING NO.: S-3-14-3503	SCALE: 1" = 30'	<b>PALM BEACH COUNTY ENGINEERING AND PUBLIC WORKS</b> <b>ROADWAY PRODUCTION</b> 2900 NORTH JOG ROAD WEST PALM BEACH, FL 33411
OF: 2		APPROVED: G. W. M.	
PROJECT NO: 2013049-03	DATE: 04/02/14	CHECKED: C. S. P.	

