

9458-001

LEGEND/ABBREVIATIONS

- CL - CENTERLINE
- Δ - DELTA (CENTRAL ANGLE)
- BE - BUFFER EASEMENT
- DE - DRAINAGE EASEMENT
- E - EASTING
- LAE - ARC LENGTH
- LAE - LIMITED ACCESS EASEMENT
- LB - LICENSED BUSINESS
- LMAE - LAKE MAINTENANCE ACCESS EASEMENT
- LME - LAKE MAINTENANCE EASEMENT
- L.W.D.D. - LAKE WORTH DRAINAGE DISTRICT
- N - NORTHING
- OHME - OVERHANG/MAINTENANCE EASEMENT
- O.R.B. - OFFICIAL RECORD BOOK
- PBCUE - PALM BEACH COUNTY UTILITY EASEMENT
- RAD - RADIUS
- (R) - INDICATES RADIAL LINE
- UE - UTILITY EASEMENT
- - INDICATES "ZERO" SIDE OF LOT LINE
- PRM - DENOTES FOUND PERMANENT REFERENCE MONUMENT
- 4" x 4" x 24" CONCRETE MONUMENT STAMPED LB4431
- PCP - DENOTES PERMANENT CONTROL POINT
- NAIL AND METAL DISK STAMPED "PCP LB3591"
- POB - POINT OF BEGINNING
- PBC - PALM BEACH COUNTY
- PG - PAGE

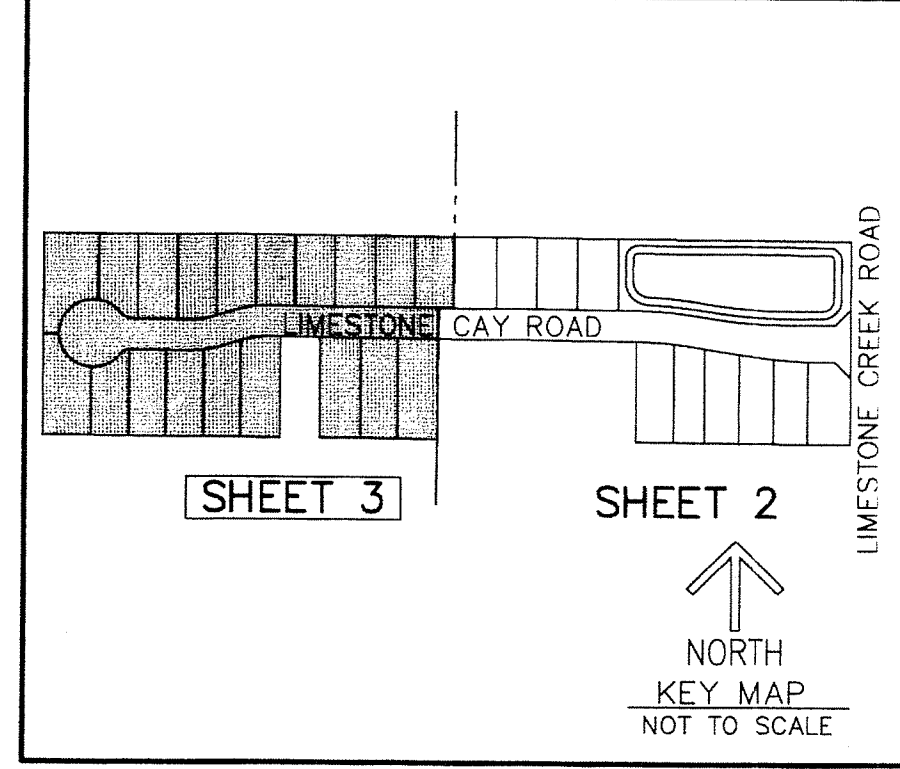
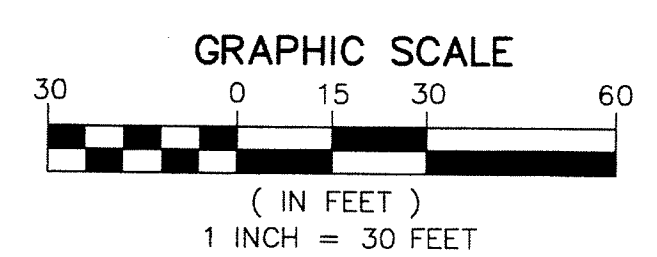
NOTES COORDINATES, BEARINGS AND DISTANCES

COORDINATES SHOWN ARE GRID  
 DATUM = NAD 83 1990 ADJUSTMENT  
 ZONE = FLORIDA EAST  
 LINEAR UNIT = US SURVEY FEET  
 COORDINATE SYSTEM 1983 STATE PLANE  
 TRANSVERSE MERCATOR PROJECTION  
 ALL DISTANCES ARE GROUND  
 SCALE FACTOR = 1.000030733  
 GROUND DISTANCE X SCALE FACTOR = GRID DISTANCE  
 BEARINGS AS SHOWN HEREON ARE GRID DATUM,  
 NAD 83 1990 ADJUSTMENT, FLORIDA EAST ZONE.

# LIMESTONE CAY

A PARCEL OF LAND BEING A PORTION OF THE NORTH HALF OF THE  
 SOUTH HALF OF THE SOUTHEAST QUARTER OF THE SOUTHEAST QUARTER OF SECTION 33,  
 TOWNSHIP 40 SOUTH,  
 RANGE 42 EAST, PALM BEACH COUNTY, FLORIDA.

THIS INSTRUMENT PREPARED BY  
 DAVID P. LINDLEY  
 OF  
**CAULFIELD and WHEELER, INC.**  
 SURVEYORS - ENGINEERS - PLANNERS  
 7900 GLADES ROAD, SUITE 100  
 BOCA RATON, FLORIDA 33434 - (561)392-1991  
 MAY - 2014



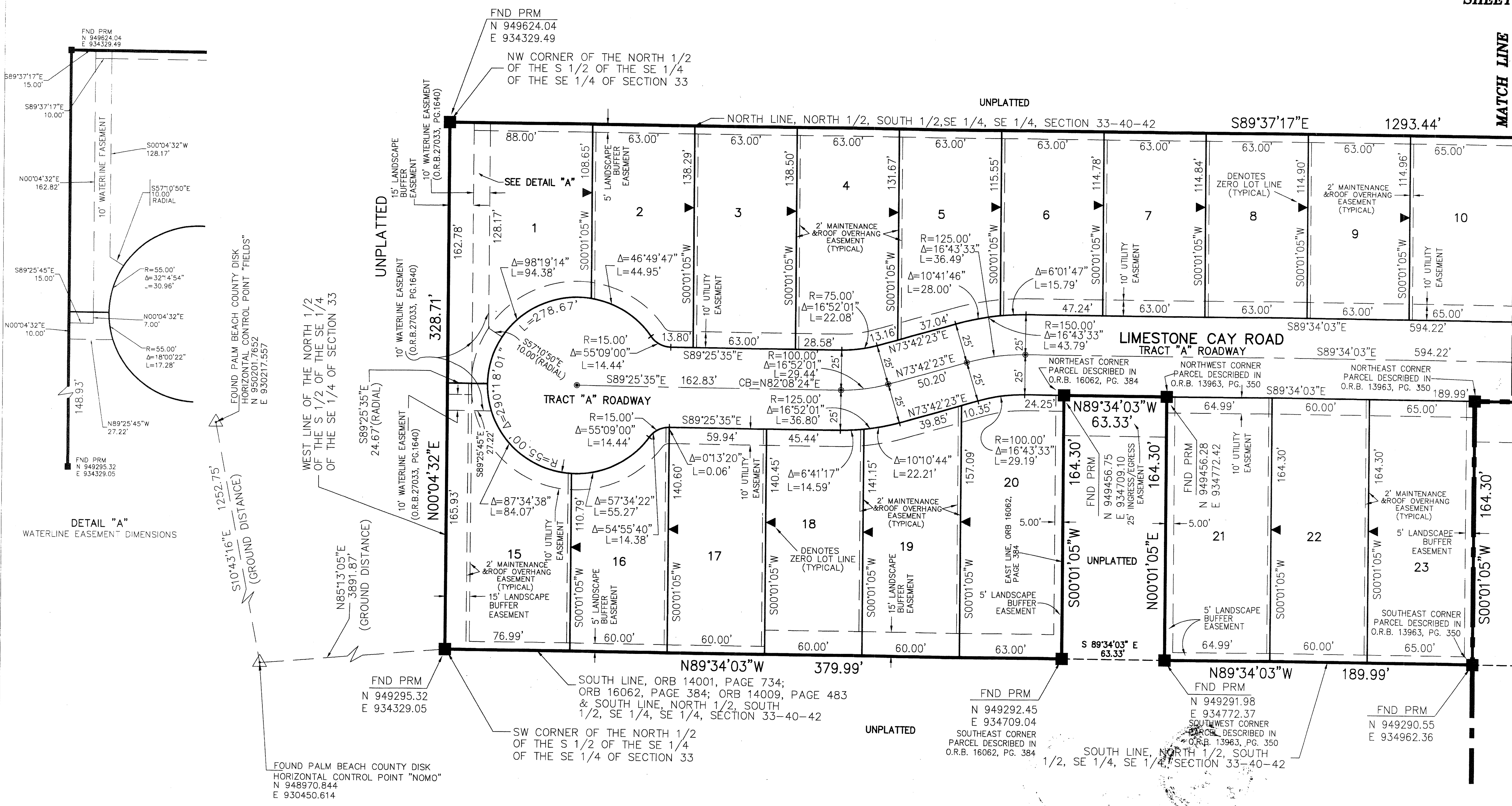
STATE OF FLORIDA  
 COUNTY OF PALM BEACH  
 THIS PLAT WAS FILED FOR  
 RECORD AT \_\_\_\_\_ M.  
 THIS \_\_\_\_\_ DAY OF \_\_\_\_\_  
 A.D. 2014 AND DULY RECORDED  
 IN PLAT BOOK \_\_\_\_\_ ON  
 PAGES \_\_\_\_\_ AND \_\_\_\_\_

SHARON R. BOCK  
 CLERK AND COMPTROLLER

BY: \_\_\_\_\_  
 DEPUTY CLERK

SHEET 3 OF 3

MATCH LINE SEE SHEET 2 OF 3



DETAIL "A" WATERLINE EASEMENT DIMENSIONS

FOUND PALM BEACH COUNTY DISK  
 HORIZONTAL CONTROL POINT "FIELDS"  
 N 950201.7652  
 E 9302017.557

FOUND PALM BEACH COUNTY DISK  
 HORIZONTAL CONTROL POINT "NOMO"  
 N 948970.844  
 E 930450.614