

# AZURE DEVELOPMENT

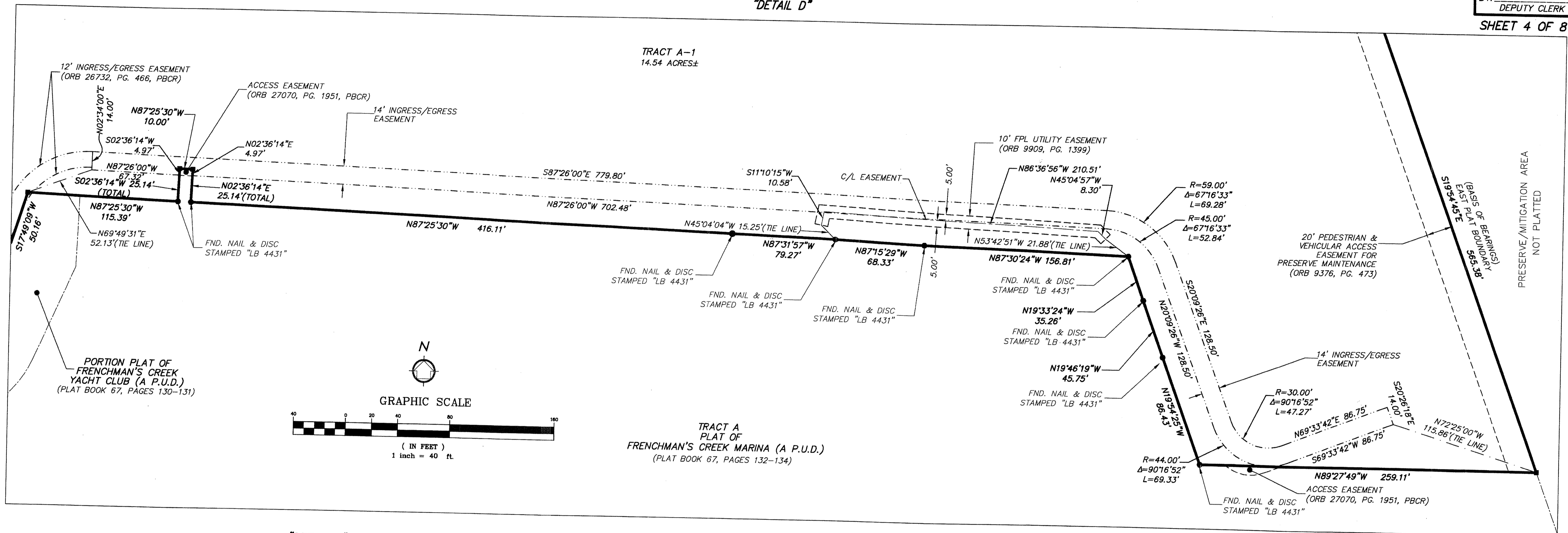
BEING A REPLAT OF A PORTION OF FRENCHMAN'S YACHT CLUB DEVELOPMENT, ACCORDING TO THE PLAT THEREOF, AS RECORDED IN PLAT BOOK 108, AT PAGE 55 THROUGH 56 INCLUSIVE, OF THE PUBLIC RECORDS OF PALM BEACH COUNTY FLORIDA, SAID LANDS LYING AND SITUATE IN SECTION 29, TOWNSHIP 41 SOUTH, RANGE 43 EAST, CITY OF PALM BEACH GARDENS, PALM BEACH COUNTY, FLORIDA

24

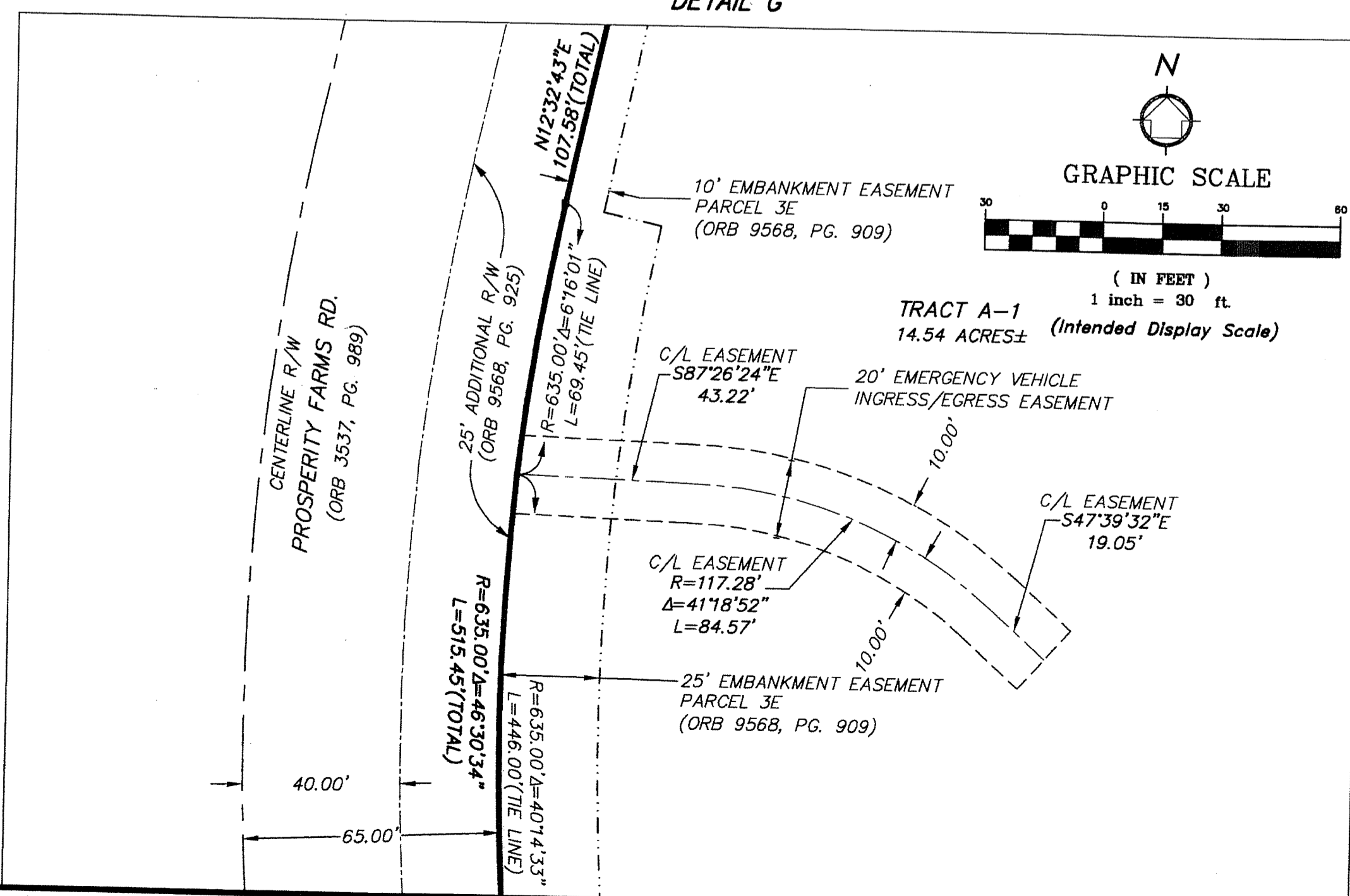
State of Florida }  
County of Palm Beach } SS  
THIS PLAT WAS FILED FOR RECORD AT \_\_\_\_\_ M.  
THIS \_\_\_\_\_ DAY OF \_\_\_\_\_ A.D. 2014 AND DULY RECORDED  
IN PLAT BOOK \_\_\_\_\_ ON PAGES \_\_\_\_\_ THROUGH \_\_\_\_\_  
SHARON R. BOCK  
CLERK AND COMPTROLLER  
BY: \_\_\_\_\_  
DEPUTY CLERK

SHEET 4 OF 8 SHEETS

"DETAIL D"



"DETAIL G"



- LEGEND:
- C/L = CENTERLINE
  - BSE = BELL SOUTH EASEMENT
  - Δ = DELTA (CENTRAL ANGLE)
  - FPL = FLORIDA POWER & LIGHT
  - Fnd. = FOUND
  - LB = LICENSED BUSINESS
  - L = LENGTH OF ARC
  - LSE = LIFT STATION EASEMENT
  - LSAE = LIFT STATION ACCESS EASEMENT
  - ORB = OFFICIAL RECORDS BOOK
  - PG. = PAGE
  - PBCR = PALM BEACH COUNTY RECORDS
  - PRM = PERMANENT REFERENCE MONUMENT
  - PB = PLAT BOOK
  - R = RADIUS
  - R/W = RIGHT-OF-WAY
  - UE = UTILITY EASEMENT
  - WSE = WATER & SEWER EASEMENT
  - = FOUND OR SET 4"x4" CONC. PRM & ALUMINUM CAP STAMPED "LB 7055" EXCEPT AS NOTED.
  - = FOUND OR SET NAIL & DISC STAMPED "LB 7055" EXCEPT AS NOTED.

NOTE:  
THE 14.00 FOOT WIDE PORTION OF THE INGRESS/EGRESS EASEMENT BEING REPLATTED AND SHOWN HEREON WAS PREVIOUSLY CREATED BY FRENCHMAN'S YACHT CLUB DEVELOPMENT, PLAT BOOK 108, PAGE 55, PALM BEACH COUNTY RECORDS.

NOTE:  
THERE ARE OTHER EASEMENTS OF RECORD THAT AFFECT THIS SITE AND NOT SHOWN FOR CLARITY PURPOSES. FOR ALL EASEMENTS SEE SHEET 2.

**WGI**  
Wantman Group, Inc.

Engineering ♦ Planning ♦ Surveying ♦ Environmental  
2035 VISTA PARKWAY, SUITE 100, WEST PALM BEACH, FL 33411  
(866) 909-2220 phone (561) 687-1110 fax  
CERTIFICATE OF AUTHORIZATION No. LB 7055  
ORLANDO - PORT ST. LUCIE - TAMPA  
THIS INSTRUMENT WAS PREPARED BY DEREK G. ZEMAN, P.S.M.  
PROFESSIONAL SURVEYOR AND MAPPER, LICENSE NO. 5655  
FOR THE FIRM: WANTMAN GROUP, INC.