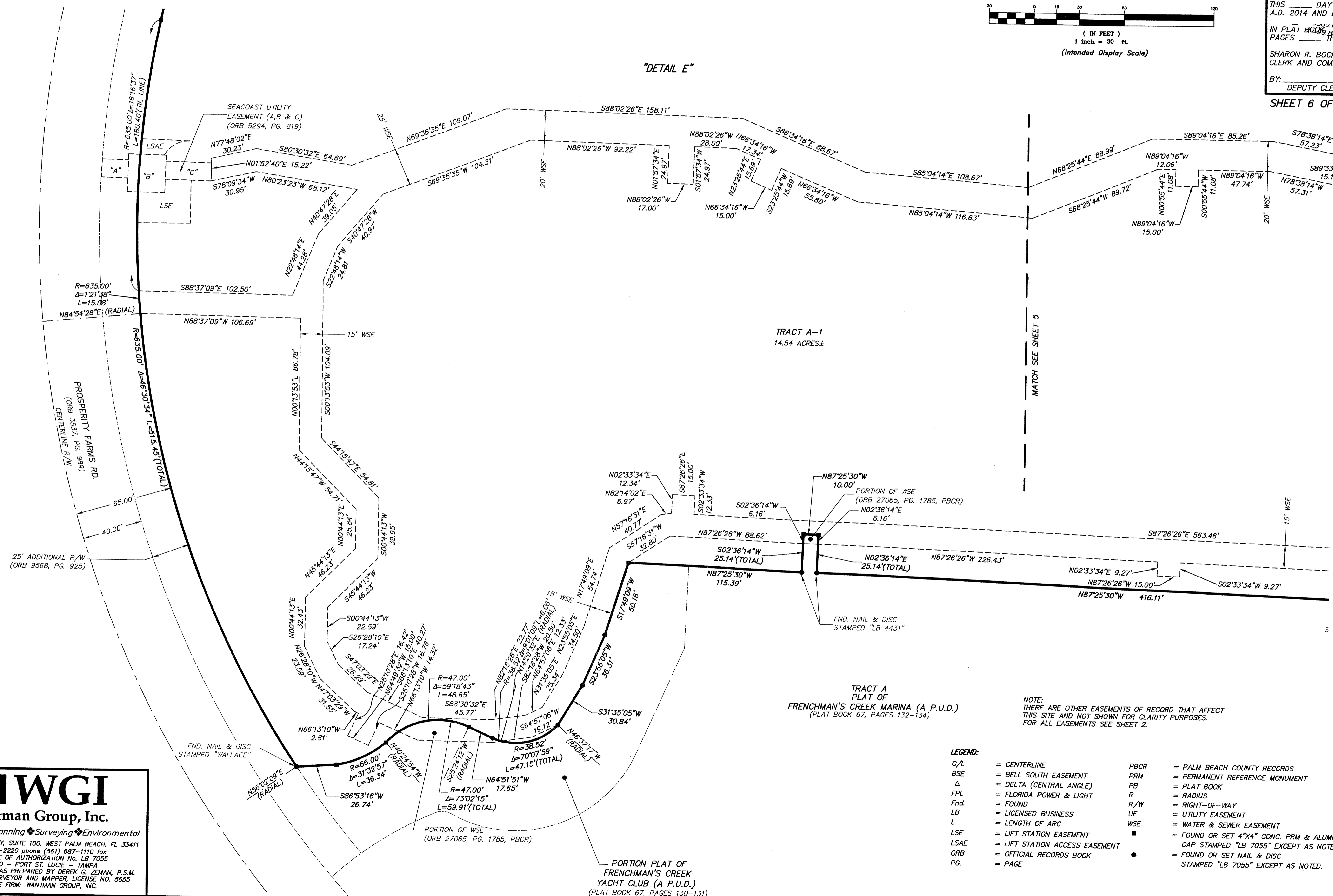
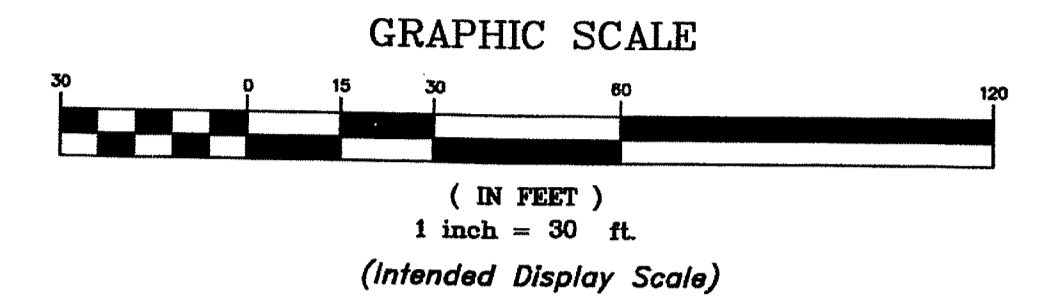
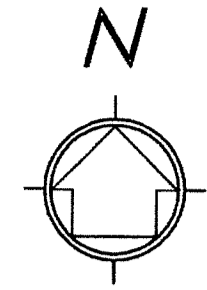


# AZURE DEVELOPMENT

BEING A REPLAT OF A PORTION OF FRENCHMAN'S YACHT CLUB DEVELOPMENT, ACCORDING TO THE PLAT THEREOF, AS RECORDED IN PLAT BOOK 108, AT PAGE 55 THROUGH 56 INCLUSIVE, OF THE PUBLIC RECORDS OF PALM BEACH COUNTY FLORIDA, SAID LANDS LYING AND SITUATE IN SECTION 29, TOWNSHIP 41 SOUTH, RANGE 43 EAST, CITY OF PALM BEACH GARDENS, PALM BEACH COUNTY, FLORIDA

# 26

State of Florida }  
 County of Palm Beach } SS  
 THIS PLAT WAS FILED FOR RECORD AT \_\_\_\_\_ M.  
 THIS \_\_\_\_\_ DAY OF \_\_\_\_\_  
 A.D. 2014 AND DULY RECORDED  
 IN PLAT BOOK \_\_\_\_\_ ON  
 PAGES \_\_\_\_\_ THROUGH \_\_\_\_\_  
 SHARON R. BOCK  
 CLERK AND COMPTROLLER  
 BY: \_\_\_\_\_  
 DEPUTY CLERK



NOTE:  
 THERE ARE OTHER EASEMENTS OF RECORD THAT AFFECT THIS SITE AND NOT SHOWN FOR CLARITY PURPOSES. FOR ALL EASEMENTS SEE SHEET 2.

**LEGEND:**

C/L	= CENTERLINE	PBCR	= PALM BEACH COUNTY RECORDS
BSE	= BELL SOUTH EASEMENT	PRM	= PERMANENT REFERENCE MONUMENT
Δ	= DELTA (CENTRAL ANGLE)	PB	= PLAT BOOK
FPL	= FLORIDA POWER & LIGHT	R	= RADIUS
Fnd.	= FOUND	R/W	= RIGHT-OF-WAY
LB	= LICENSED BUSINESS	UE	= UTILITY EASEMENT
L	= LENGTH OF ARC	WSE	= WATER & SEWER EASEMENT
LSE	= LIFT STATION EASEMENT	■	= FOUND OR SET 4"x4" CONC. PRM & ALUMINUM CAP STAMPED "LB 7055" EXCEPT AS NOTED.
LSAE	= LIFT STATION ACCESS EASEMENT	●	= FOUND OR SET NAIL & DISC STAMPED "LB 7055" EXCEPT AS NOTED.
ORB	= OFFICIAL RECORDS BOOK		
PG.	= PAGE		

**WGI**  
 Wantman Group, Inc.  
 Engineering ♦ Planning ♦ Surveying ♦ Environmental  
 2035 VISTA PARKWAY, SUITE 100, WEST PALM BEACH, FL 33411  
 (866) 908-2220 phone (561) 687-1110 fax  
 CERTIFICATE OF AUTHORIZATION No. LB 7055  
 ORLANDO - FORT ST. LUCIE - TAMPA  
 THIS INSTRUMENT WAS PREPARED BY DEREK G. ZEMAN, P.S.M.  
 PROFESSIONAL SURVEYOR AND MAPPER, LICENSE NO. 5655  
 FOR THE FIRM: WANTMAN GROUP, INC.

S:\17411425.00 Frenchman's Creek Marina\dwg\142500\_Replat.dwg Sh 6 Oct 21, 2014