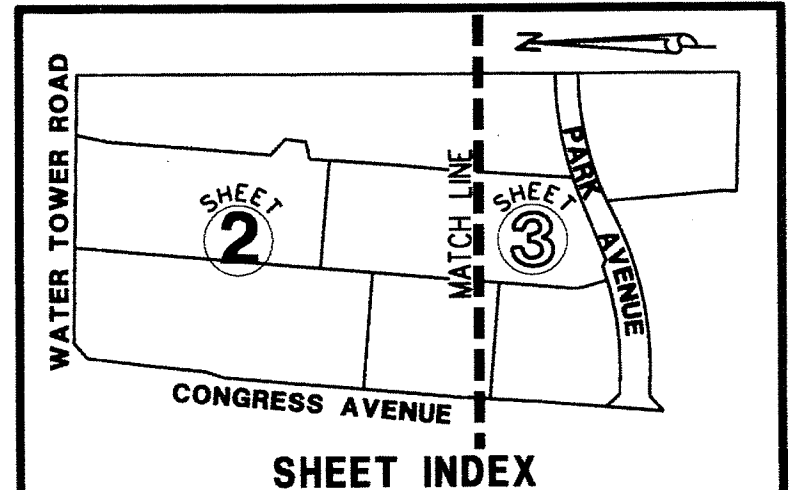
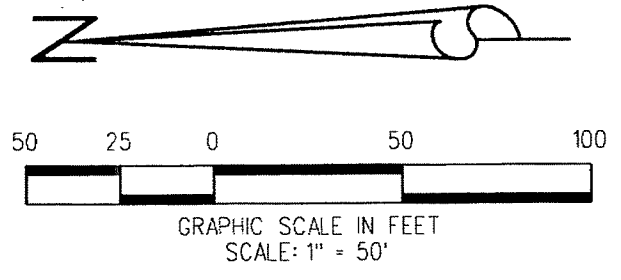
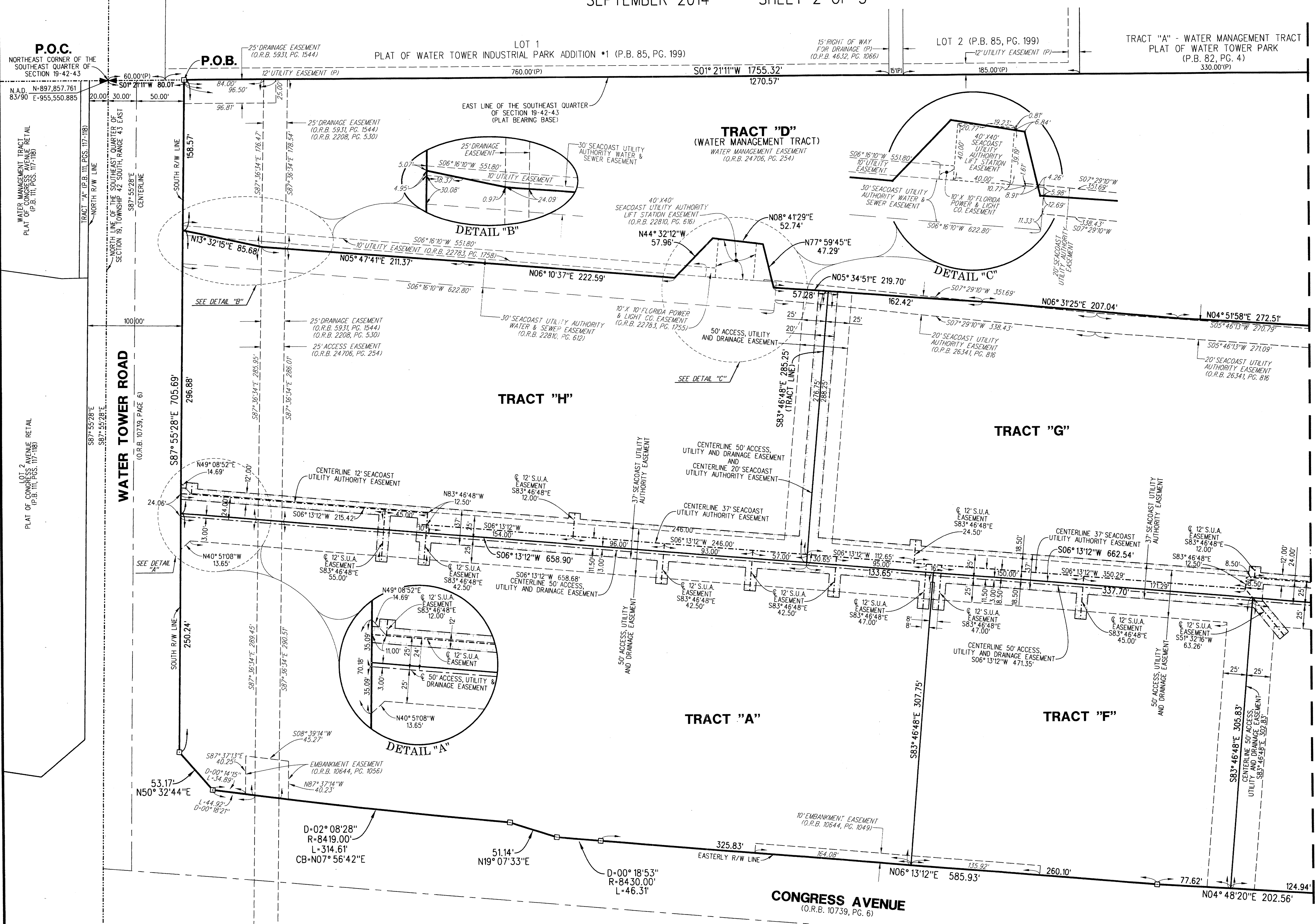


CONGRESS BUSINESS PARK, A P.U.D.

BEING A PORTION OF SECTION 19, TOWNSHIP 42 SOUTH, RANGE 43 EAST,
TOWN OF LAKE PARK, PALM BEACH COUNTY, FLORIDA
SEPTEMBER 2014 SHEET 2 OF 3

36



MATCH LINE - SEE SHEET 3

- ABBREVIATIONS:**
- CB = CHORD BEARING
 - CL = CENTERLINE
 - CL = CHORD LENGTH
 - CONC. = CONCRETE
 - COR. = CORNER
 - D = DELTA
 - D.E. = DRAINAGE EASEMENT
 - L = ARC LENGTH
 - O.R.B. = OFFICIAL RECORD BOOK
 - MON. = MONUMENT
 - P.C.P. = PERMANENT CONTROL POINT
 - P.B. = PLAT BOOK
 - PG. = PAGE
 - PGS. = PAGES
 - P.O.B. = POINT OF BEGINNING
 - P.O.C. = POINT OF COMMENCEMENT
 - P.R.M. = PERMANENT REFERENCE MONUMENT
 - P.S.M. = PROFESSIONAL SURVEYOR AND MAPPER
 - R = RADIUS
 - S.U.A. = SEACOAST UTILITY AUTHORITY

- LEGEND:**
- ⊙ DENOTES PERMANENT CONTROL POINT (P.C.P.) SET MAG NAIL & DISK STAMPED "PCP LB4431" UNLESS OTHERWISE NOTED
 - ⊠ DENOTES PERMANENT REFERENCE MONUMENT (P.R.M.) SET 4"x4" CONCRETE MONUMENT WITH DISK STAMPED "PRM LB4431" UNLESS OTHERWISE NOTED

LIDBERG LAND SURVEYING, INC.
725 West Indiantown Road, Suite 200, Jupiter, Florida 33458 TEL. 561-746-8454

CD:	K:\JUST \ 194243 \ 99-240E-306 \ 99-240E-306.DGN
REF.	
FLD.	FB. PG. JOB 99-240E-306
OFF.	CASASUS DATE SEPTEMBER 2014
CKD.	D.C.L. SHEET 2 OF 3 DWG. D99-240PP