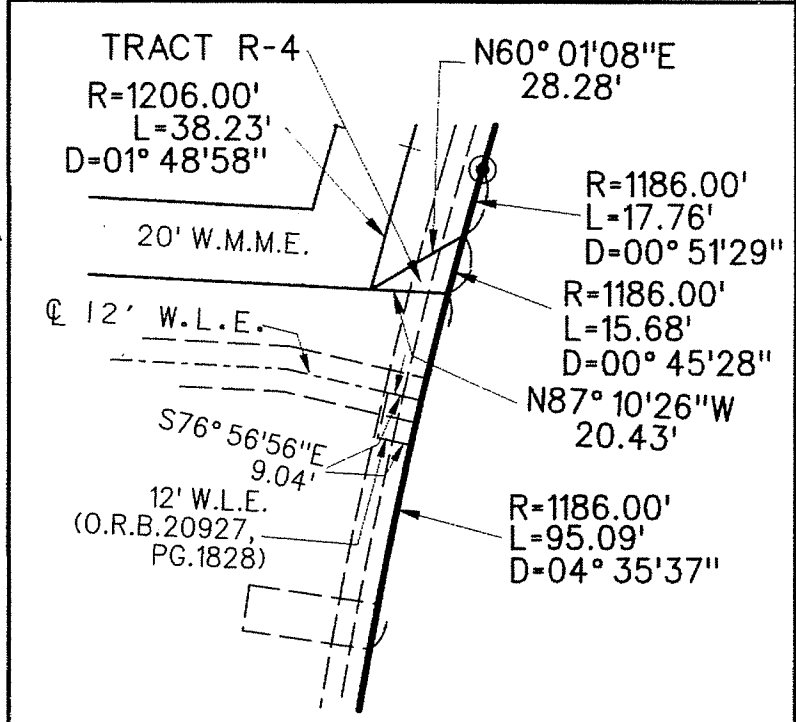
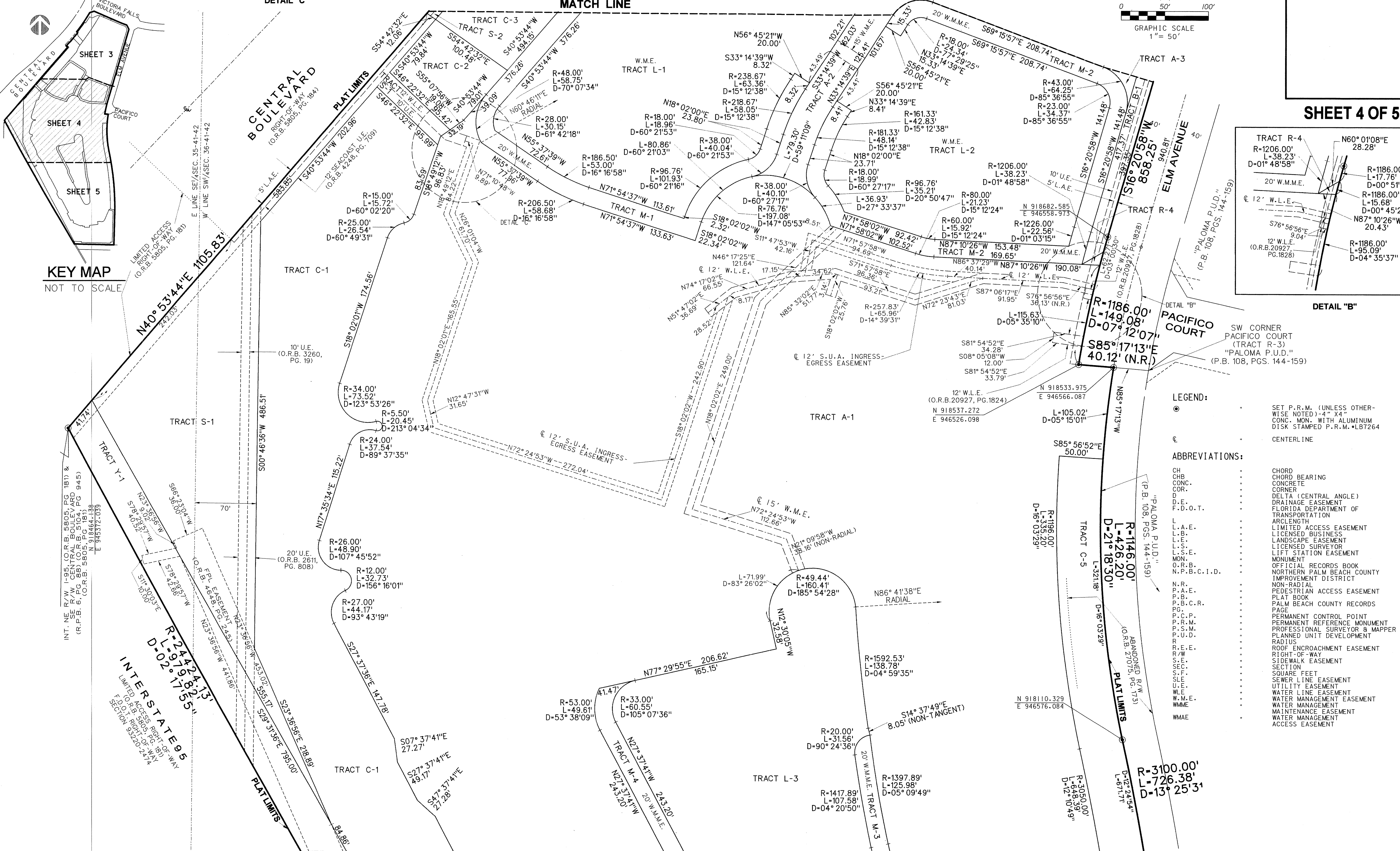
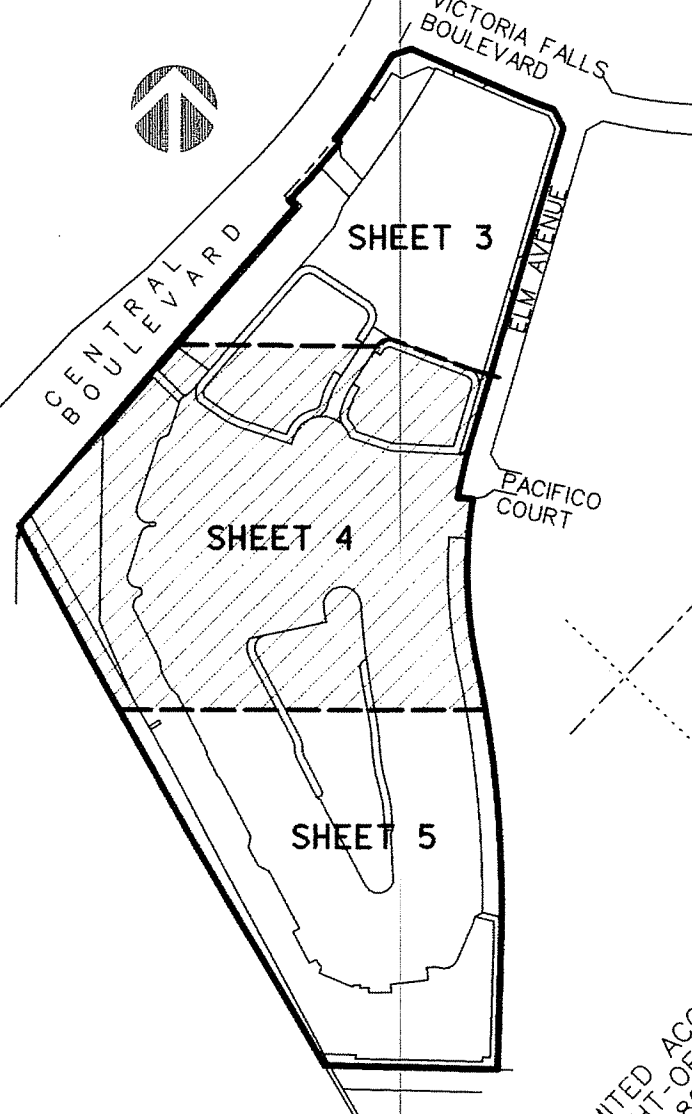
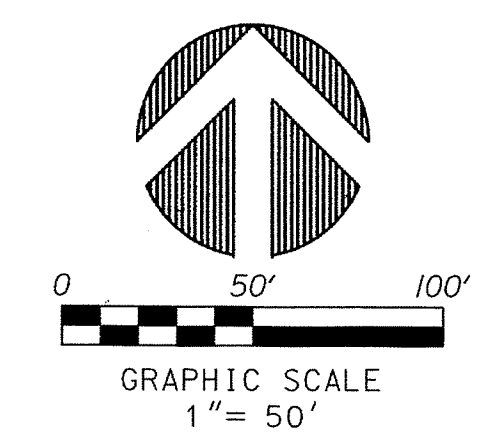
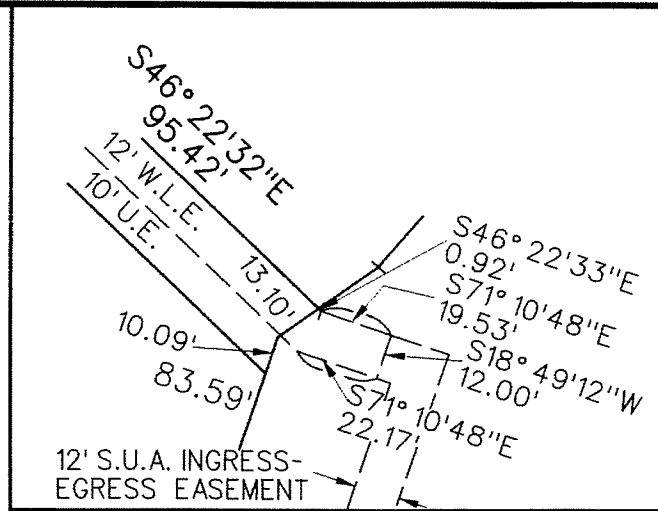


# CIMARRON COVE RE-PLAT NO. 2

A REPLAT OF A PORTION OF "CIMARRON COVE RE-PLAT NO. 1" (P.B. 116, PGS. 128-132, P.B.C.R.)  
AND A PORTION OF "CIMARRON COVE" (P.B. 111, PGS. 102-106, P.B.C.R.)  
IN SECTIONS 35 AND 36, TOWNSHIP 41 SOUTH, RANGE 42 EAST,  
PALM BEACH GARDENS, PALM BEACH COUNTY, FLORIDA.  
NOVEMBER, 2014

**PERIMETER**  
SURVEYING & MAPPING  
Certificate of Authorization No. LB7264  
Prepared by: Jeff S. Hodapp, P.S.M.  
947 Clint Moore Road  
Boca Raton, Florida 33487  
Tel: (561) 241-9988  
Fax: (561) 241-5182



- LEGEND:  
● SET P.R.M. (UNLESS OTHERWISE NOTED)-4" X4" CONC. MON. WITH ALUMINUM DISK STAMPED P.R.M.-LB7264  
○ CENTERLINE
- ABBREVIATIONS:  
CH CHORD  
CHB CHORD BEARING  
CONC. CONCRETE  
COR. CORNER  
D DELTA (CENTRAL ANGLE)  
D.E. DRAINAGE EASEMENT  
F.D.O.T. FLORIDA DEPARTMENT OF TRANSPORTATION  
L LENGTH  
L.A.E. LIMITED ACCESS EASEMENT  
L.B. LICENSED BUSINESS  
L.E. LANDSCAPE EASEMENT  
L.S.E. LICENSED SURVEYOR  
LIFT LIFT STATION EASEMENT  
MON. MONUMENT  
O.R.B. OFFICIAL RECORDS BOOK  
N.P.B.C.I.D. NORTHERN PALM BEACH COUNTY IMPROVEMENT DISTRICT  
N.R. NON-RADIAL  
P.A.E. PEDESTRIAN ACCESS EASEMENT  
P.B.C.R. PALM BEACH COUNTY RECORDS PAGE  
P.C.P. PERMANENT CONTROL POINT  
P.R.M. PERMANENT REFERENCE MONUMENT  
P.S.M. PROFESSIONAL SURVEYOR & MAPPER  
P.U.D. PLANNED UNIT DEVELOPMENT  
R.E.E. ROOF ENCROACHMENT EASEMENT  
R/W RIGHT-OF-WAY  
S.E. SIDEWALK EASEMENT  
SEC. SECTION  
S.F. SQUARE FEET  
SLE. SEWER LINE EASEMENT  
U.E. UTILITY EASEMENT  
W.L.E. WATER LINE EASEMENT  
W.M.E. WATER MANAGEMENT EASEMENT  
WMAE WATER MANAGEMENT MAINTENANCE EASEMENT  
WMAE WATER MANAGEMENT ACCESS EASEMENT

KEY MAP  
NOT TO SCALE



13212

SEE SHEET 3  
MATCH LINE

MATCH LINE  
SEE SHEET 5