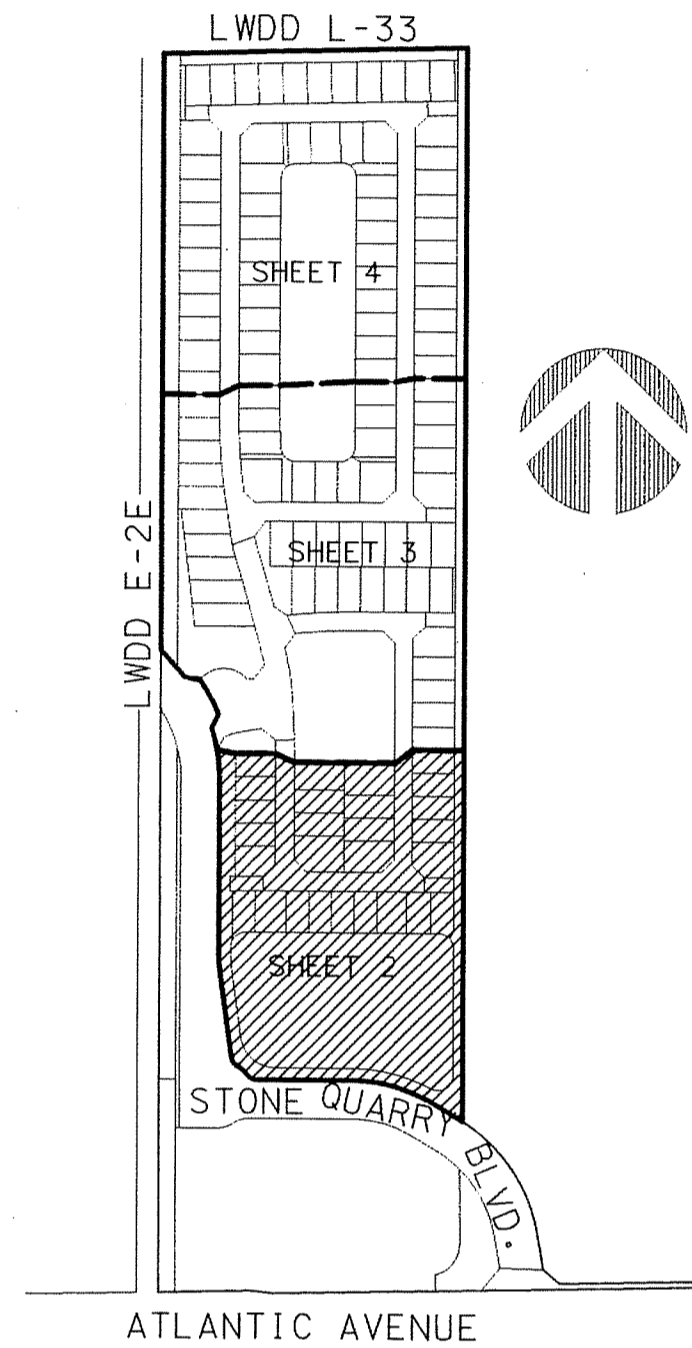
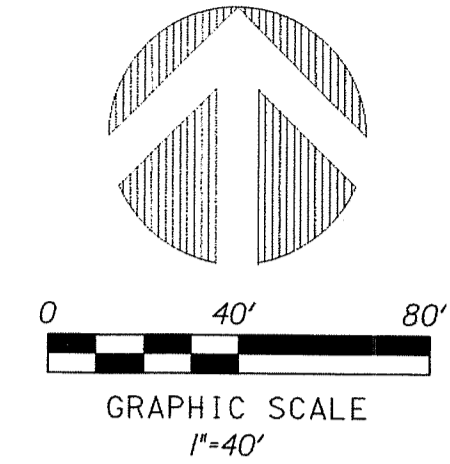


# PERIMETER

**SURVEYING & MAPPING**  
Certificate of Authorization No. LB7264  
Prepared by: Jeff S. Hodapp, P.S.M.  
947 Clint Moore Road  
Boca Raton, Florida 33487  
Tel: (561) 241-9988  
Fax: (561) 241-5182

# ATLANTIC COMMONS - PLAT TWO

A REPLAT OF ALL OF TRACTS C AND L, "ATLANTIC COMMONS - PLAT ONE" (P.B. 115, PGS. 135-137, P.B.C.R.)  
TOGETHER WITH A PORTION OF THE SW 1/4 SECTION 16, TOWNSHIP 46 SOUTH, RANGE 42 EAST,  
PALM BEACH COUNTY, FLORIDA.



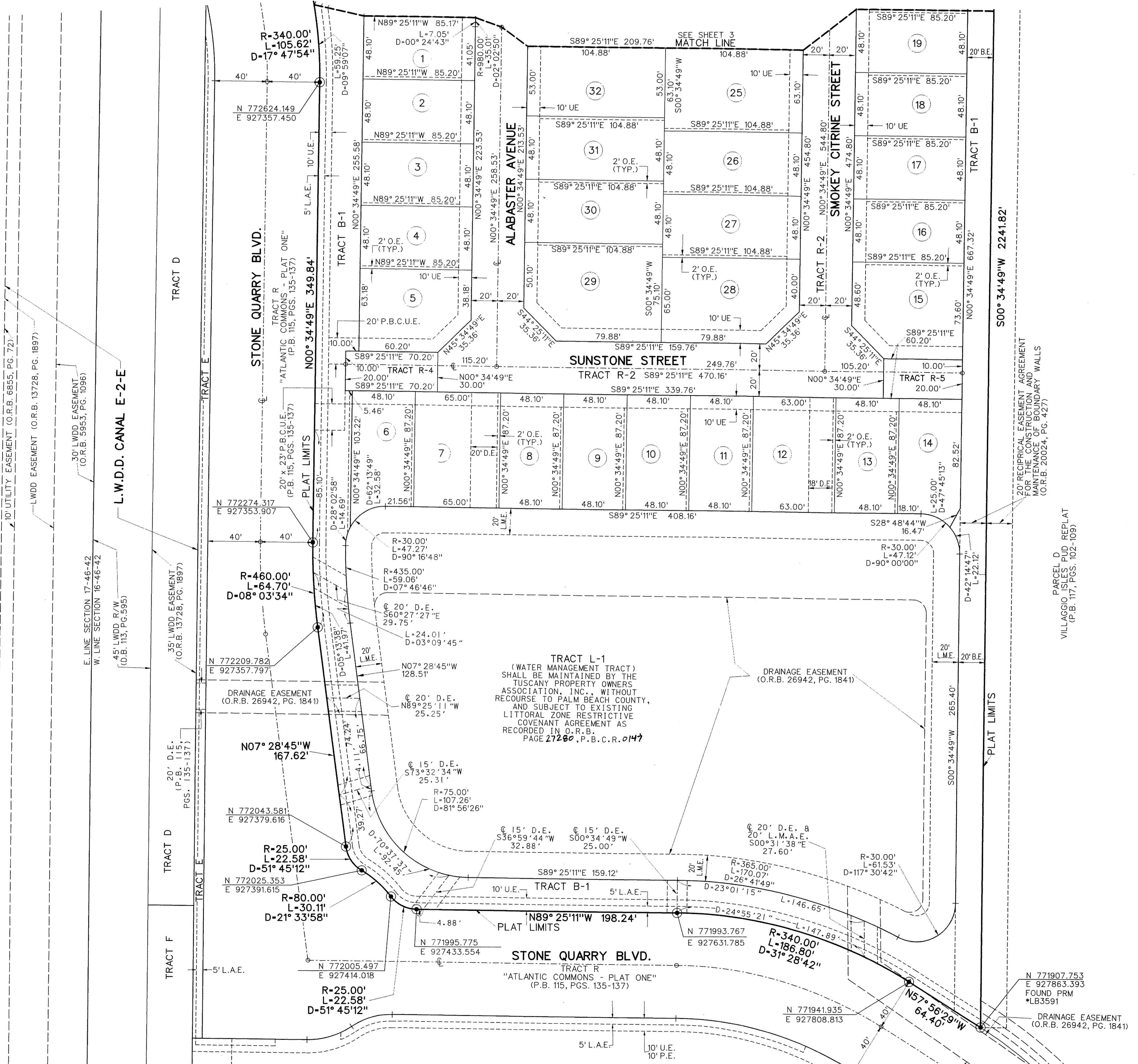
KEY MAP  
NOT TO SCALE

### LEGEND:

- SET P.R.M. (UNLESS OTHERWISE NOTED) - 4" X 4" DISK STAMPED P.R.M. • LB7264
- PERMANENT CONTROL POINT (NAIL & DISK • LB7264)
- ⊕ CENTERLINE

### ABBREVIATIONS:

- ALUM ALUMINUM
- B.E. BUFFER EASEMENT
- CH CHORD
- CHB CHORD BEARING
- CONC. CONCRETE
- COR. CORNER
- D DELTA (CENTRAL ANGLE)
- D.E. DRAINAGE EASEMENT
- D.T. DRIVEWAY TRACT
- FND. FOUND
- L ARCLength
- L.A.E. LIMITED ACCESS EASEMENT
- L.B.E. LANDSCAPE BUFFER EASEMENT
- L.B. LICENSED BUSINESS
- L.E. LAKE MAINTENANCE EASEMENT
- L.M.A.E. LAKE MAINTENANCE ACCESS EASEMENT
- L.S. LICENSED SURVEYOR
- L.S.E. LIFT STATION EASEMENT
- L.W.D.D. LAKE WORTH DRAINAGE DISTRICT
- MON. MONUMENT
- O.E. MAINTENANCE AND ROOF OVERHANG EASEMENT
- O.R.B. OFFICIAL RECORDS BOOK
- N.R. NON-RADIAL
- P.B. PLAT BOOK
- P.B.C. PALM BEACH COUNTY
- P.B.C.R. PALM BEACH COUNTY RECORDS
- P.B.C.U.E. PALM BEACH COUNTY UTILITY EASEMENT
- PG. PAGE
- P.C.P. PERMANENT CONTROL POINT
- P.O.B. POINT OF BEGINNING
- P.O.C. POINT OF COMMENCEMENT
- P.R.M. PERMANENT REFERENCE MONUMENT
- P.S.M. PROFESSIONAL SURVEYOR & MAPPER
- P.U.D. PLANNED UNIT DEVELOPMENT
- R. RADIUS
- RAD. RADIAL
- R.P.B. ROAD PLAT BOOK
- R.O.W. RIGHT-OF-WAY
- SEC. SECTION
- S.F. SQUARE FEET
- U.E. UTILITY EASEMENT



**TRACT L-1**  
(WATER MANAGEMENT TRACT)  
SHALL BE MAINTAINED BY THE  
TUSCANY PROPERTY OWNERS  
ASSOCIATION, INC., WITHOUT  
RECOURSE TO PALM BEACH COUNTY,  
AND SUBJECT TO EXISTING  
LITTORAL ZONE RESTRICTIVE  
COVENANT AGREEMENT AS  
RECORDED IN O.R.B.  
PAGE 27280, P.B.C.R. 0147

DRAINAGE EASEMENT  
(O.R.B. 26942, PG. 1841)

PARCEL D  
VILLAGGIO ISLES PUD REPLAT  
(P.B. 117, PGS. 102-109)

RECIPROCAL EASEMENT AGREEMENT  
FOR MAINTENANCE OF BOUNDARY WALLS  
(O.R.B. 20024, PG. 427)

35' L.W.D. EASEMENT  
(O.R.B. 13728, PG. 1897)

45' L.W.D. R/W  
(O.B. 113, PG. 595)

30' L.W.D. EASEMENT  
(O.R.B. 5953, PG. 1096)

10' UTILITY EASEMENT (O.R.B. 6855, PG. 72)

L.W.D. EASEMENT (O.R.B. 13728, PG. 1897)

PERIMETER  
SURVEYING & MAPPING  
Certificate of Authorization No. LB7264  
Prepared by: Jeff S. Hodapp, P.S.M.  
947 Clint Moore Road  
Boca Raton, Florida 33487  
Tel: (561) 241-9988  
Fax: (561) 241-5182