

# RABORN ESTATES PLAT 2

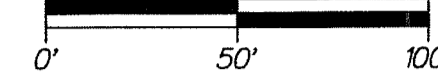
BEING A REPLAT OF LOT 3, RABORN ESTATES AT VILLAGE OF GOLF, IN PLAT BOOK 112, PAGES 3 AND 4 (P.R.P.B.CO.) BEING IN SECTION 31, TOWNSHIP 45 SOUTH, RANGE 43 EAST, VILLAGE OF GOLF, PALM BEACH COUNTY, FLORIDA

### LEGEND:

- ⊕ = CENTERLINE
- C.A. = CENTRAL ANGLE
- C.B. = CHORD BEARING
- P.R.M. = PERMANENT REFERENCE MONUMENT (4"X4" CONCRETE MONUMENT STAMPED "PRM 353")
- P.R.M. (NAIL) = NAIL AND DISK "PRM LB 353"
- P.O.B. = POINT OF BEGINNING
- F.P.L.CO. = FLORIDA POWER AND LIGHT COMPANY
- O.R.B. = OFFICIAL RECORDS BOOK
- SEC. 31/45/43 = SECTION 31 TOWNSHIP 45 SOUTH, RANGE 43 EAST
- P.R.P.B.CO. = PUBLIC RECORDS OF PALM BEACH COUNTY
- C-1 = CURVE 1 (SEE CURVE TABLE)

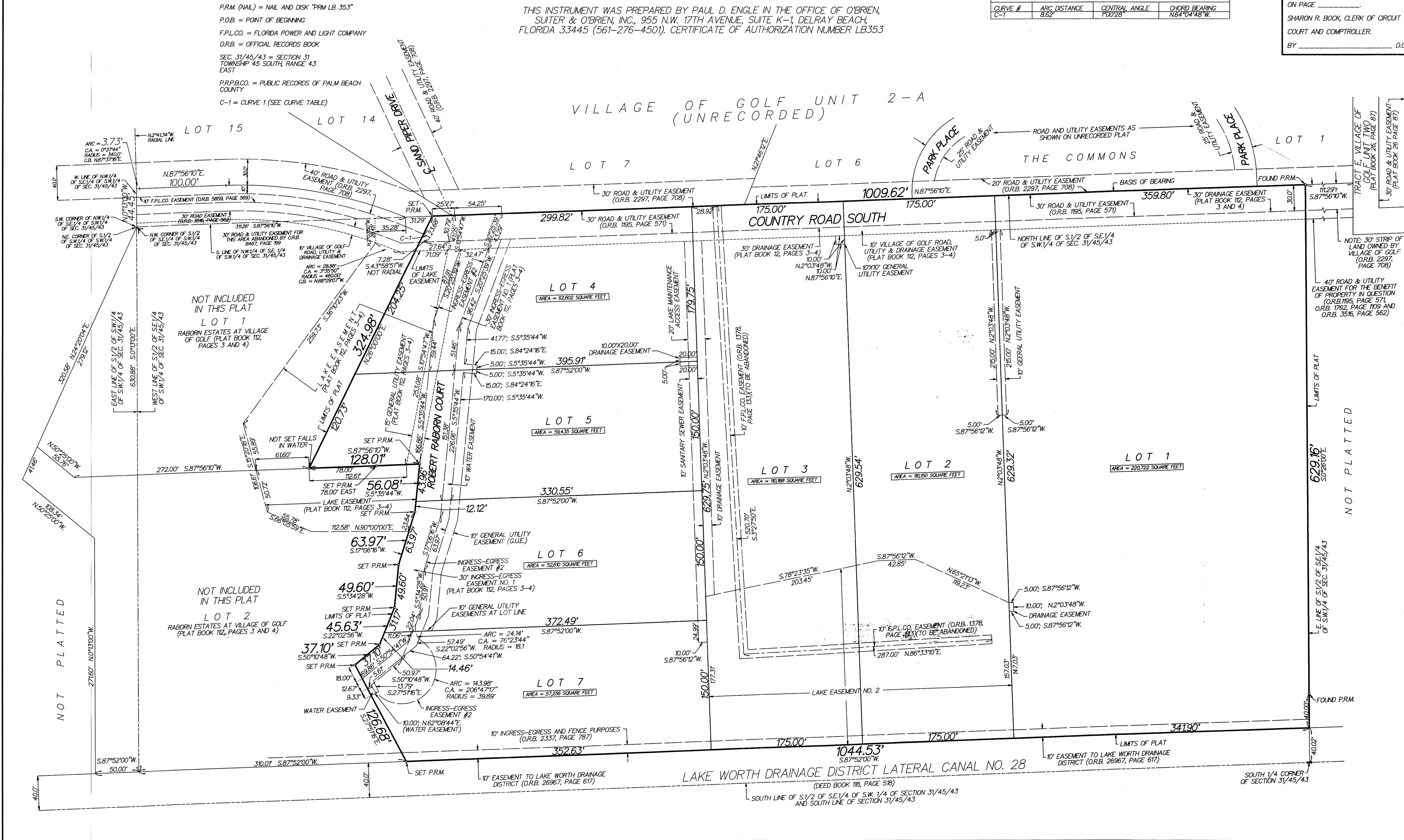
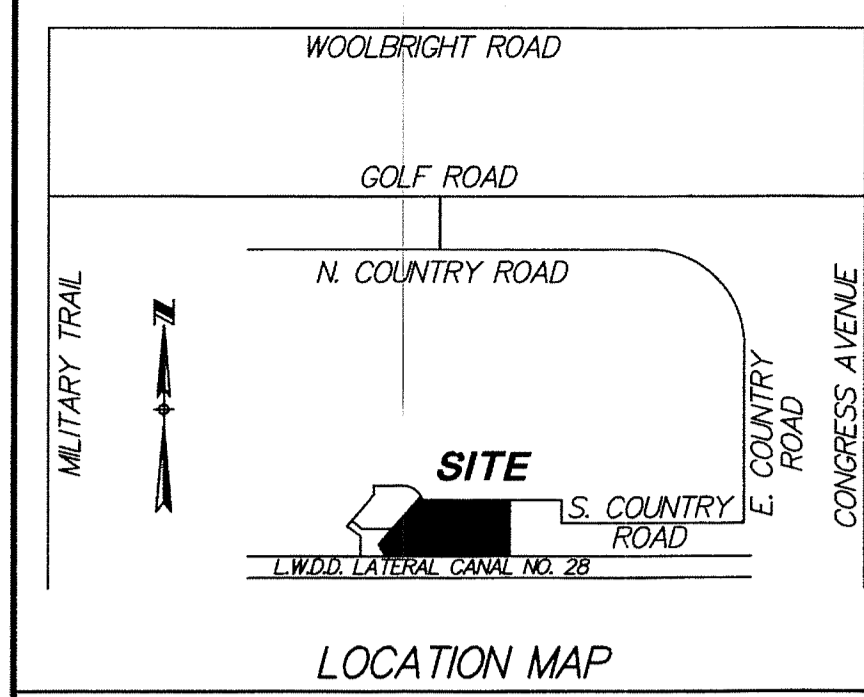
SHEET 2 OF 2

SCALE: 1" = 50'



THIS INSTRUMENT WAS PREPARED BY PAUL D. ENGLE IN THE OFFICE OF O'BRIEN, SUITER & O'BRIEN, INC., 955 N.W. 17TH AVENUE, SUITE K-1, DELRAY BEACH, FLORIDA 33445 (561-276-4501), CERTIFICATE OF AUTHORIZATION NUMBER LB353

CURVE TABLE			
CURVE #	ARC DISTANCE	CENTRAL ANGLE	CHORD BEARING
C-1	8.62'	700.28"	N64°04'48"W



NOT INCLUDED IN THIS PLAT  
LOT 1  
RABORN ESTATES AT VILLAGE OF GOLF (PLAT BOOK 112, PAGES 3 AND 4)

NOT INCLUDED IN THIS PLAT  
LOT 2  
RABORN ESTATES AT VILLAGE OF GOLF (PLAT BOOK 112, PAGES 3 AND 4)

NOTE: 30' STRIP OF LAND OWNED BY VILLAGE OF GOLF (O.R.B. 2297, PAGE 708)

NOTE: 40' ROAD & UTILITY EASEMENT FOR THE BENEFIT OF PROPERTY IN QUESTION (O.R.B. 195, PAGE 571; O.R.B. 1782, PAGE 109 AND O.R.B. 356, PAGE 562)

LINE OF S.1/2 OF SE.1/4 OF SW.1/4 OF SEC. 31/45/43

SOUTH 1/4 CORNER OF SECTION 31/45/43