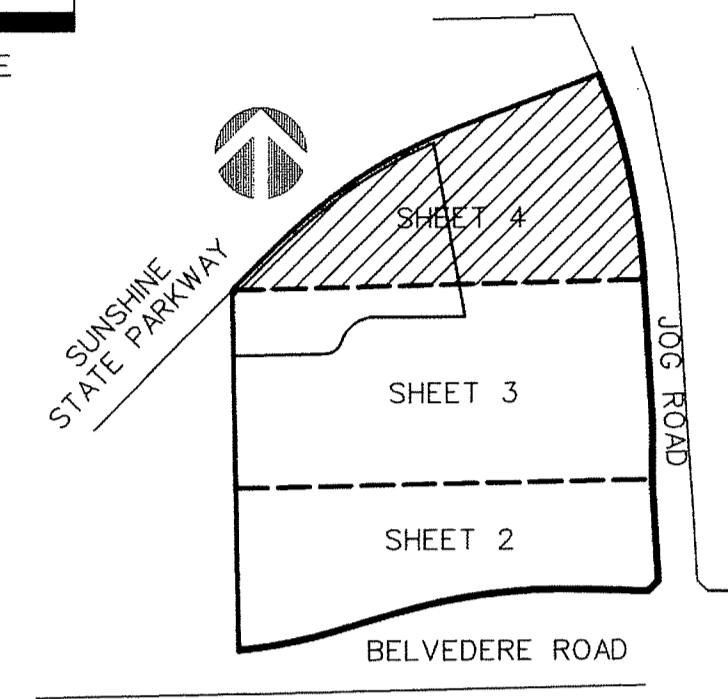
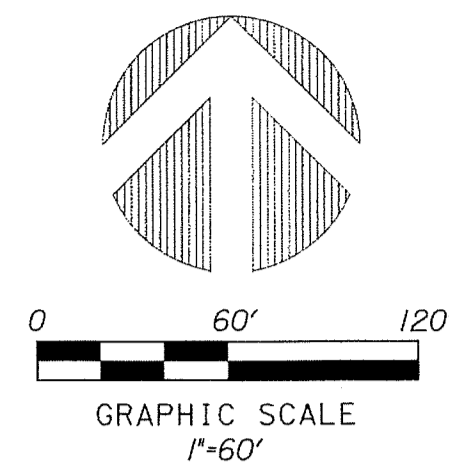


# PERIMETER

SURVEYING & MAPPING  
Certificate of Authorization No. LB7264  
Prepared by: Jeff S. Hodapp, P.S.M.  
947 Clint Moore Road  
Boca Raton, Florida 33487  
Tel: (561) 241-9988  
Fax: (561) 241-5182



KEY MAP  
NOT TO SCALE

### LEGEND:

- SET P.R.M. (UNLESS OTHERWISE NOTED)-4" X4" CONC. MON. WITH ALUMINUM DISK STAMPED P.R.M. #LB7264 P.C.P. CENTERLINE
- 
- ⊕

### ABBREVIATIONS:

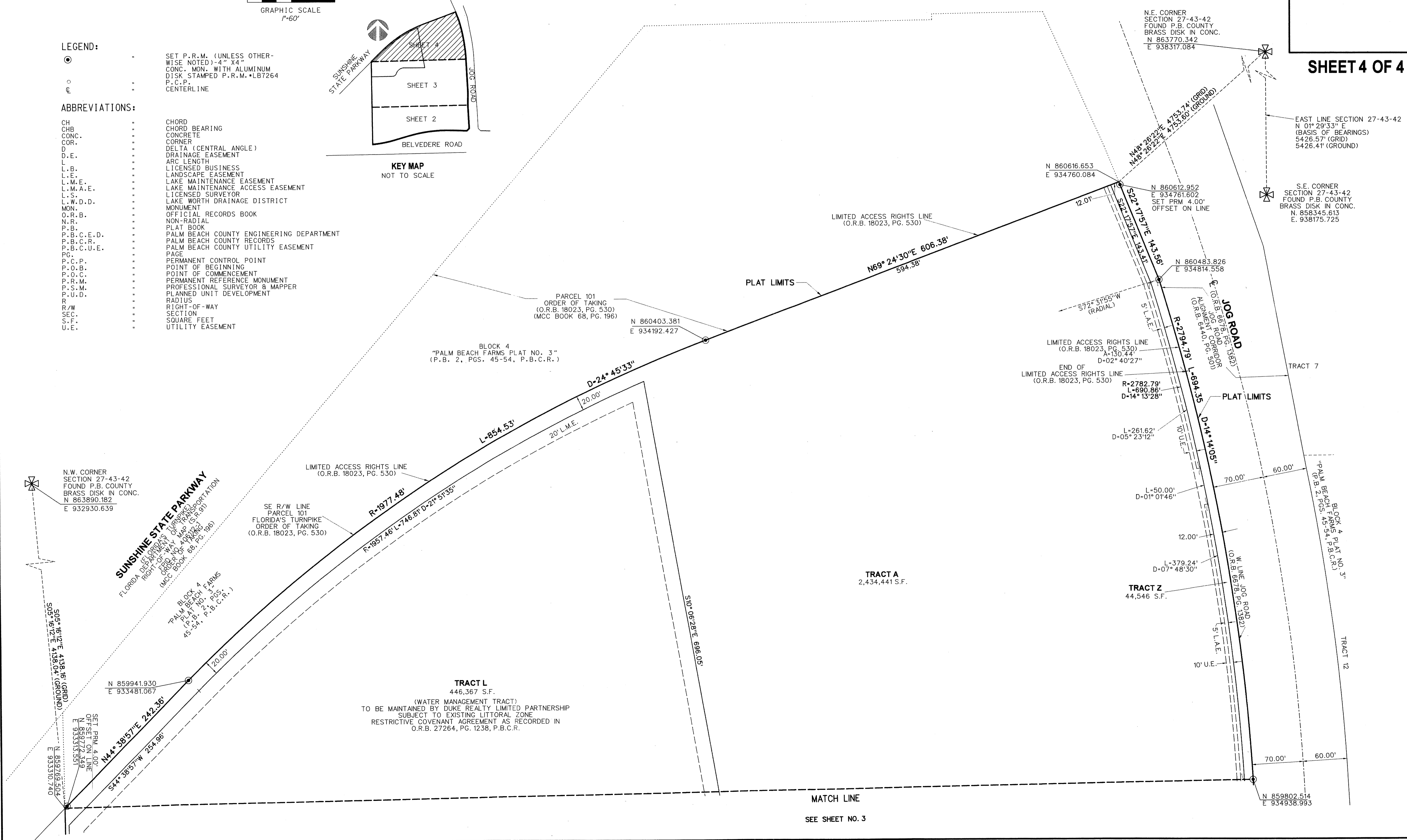
- CH CHORD BEARING
- CHB CHORD BEARING
- CONC. CONCRETE
- COR. CORNER
- D DELTA (CENTRAL ANGLE)
- D.E. DRAINAGE EASEMENT
- L ARC LENGTH
- L.B. LICENSED BUSINESS
- L.E. LANDSCAPE EASEMENT
- L.M.E. LAKE MAINTENANCE EASEMENT
- L.M.A.E. LAKE MAINTENANCE ACCESS EASEMENT
- L.S. LICENSED SURVEYOR
- L.W.D.D. LAKE WORTH DRAINAGE DISTRICT
- MON. MONUMENT
- O.R.B. OFFICIAL RECORDS BOOK
- N.R. NON-RADIAL
- P.B. PLAT BOOK
- P.B.C.E.D. PALM BEACH COUNTY ENGINEERING DEPARTMENT
- P.B.C.R. PALM BEACH COUNTY RECORDS
- P.B.C.U.E. PALM BEACH COUNTY UTILITY EASEMENT
- PG. PAGE
- P.C.P. PERMANENT CONTROL POINT
- P.O.B. POINT OF BEGINNING
- P.O.C. POINT OF COMMENCEMENT
- P.R.M. PERMANENT REFERENCE MONUMENT
- P.S.M. PROFESSIONAL SURVEYOR & MAPPER
- P.U.D. PLANNED UNIT DEVELOPMENT
- R RADIUS
- R/W RIGHT-OF-WAY
- SEC. SECTION
- S.F. SQUARE FEET
- U.E. UTILITY EASEMENT

# TURNPIKE CROSSING EAST

A REPLAT OF ALL OF TRACTS 11 & 14, AND A PORTION OF TRACTS 7-9, 12, 13, 15, & 18-20, ALL IN BLOCK 4, TOGETHER WITH A PORTION OF 30 FOOT RIGHTS-OF-WAY ADJACENT THERETO, ALL OF "PALM BEACH FARMS COMPANY PLAT NO. 3" (P.B. 2, PGS. 45-54, P.B.C.R.), IN SECTIONS 27 & 34, TOWNSHIP 43 SOUTH, RANGE 42 EAST, PALM BEACH COUNTY, FLORIDA.

# 99

## SHEET 4 OF 4



N.W. CORNER SECTION 27-43-42 FOUND P.B. COUNTY BRASS DISK IN CONC. N 863890.182 E 932930.639

SUNSHINE STATE PARKWAY  
FLORIDA DEPARTMENT OF TRANSPORTATION  
RIGHT-OF-WAY MAP  
ORDER OF TAKING  
(MCC BOOK 68, PG. 196)

BLOCK 4  
PALM BEACH FARMS  
PLAT NO. 3  
(P.B. 2, PGS. 45-54, P.B.C.R.)

SE R/W LINE  
PARCEL 101  
FLORIDA'S TURNPIKE  
ORDER OF TAKING  
(O.R.B. 18023, PG. 530)

BLOCK 4  
"PALM BEACH FARMS PLAT NO. 3"  
(P.B. 2, PGS. 45-54, P.B.C.R.)

PARCEL 101  
ORDER OF TAKING  
(O.R.B. 18023, PG. 530)  
(MCC BOOK 68, PG. 196)

TRACT A  
2,434,441 S.F.

TRACT L  
446,367 S.F.  
(WATER MANAGEMENT TRACT)  
TO BE MAINTAINED BY DUKE REALTY LIMITED PARTNERSHIP  
SUBJECT TO EXISTING LITTORAL ZONE  
RESTRICTIVE COVENANT AGREEMENT AS RECORDED IN  
O.R.B. 27264, PG. 1238, P.B.C.R.

TRACT Z  
44,546 S.F.

N 859802.514  
E 934938.993

MATCH LINE  
SEE SHEET NO. 3